





## » The Venue

*Spectacular, visionary, unique. Tempodrom, the quick-change artist amongst Berlin's event venues. Established in 1980 as a circus tent on Potsdamer Platz and after various re-locations rebuilt in 2001 on the grounds of the former Anhalter Bahnhof in a new form, today the building offers a variety of use and design possibilities that is hard to top.*

*A multi-functional spatial concept combined with an aesthetically impressive architecture and an ecologically well thought out infrastructure creates the ideal conditions for events for from 50 to 3,500 guests. Depending on requirements, 5 rooms/areas can be used separately or in combination: the Big Arena, the Small Arena, foyer, forecourt and the roof terrace.*

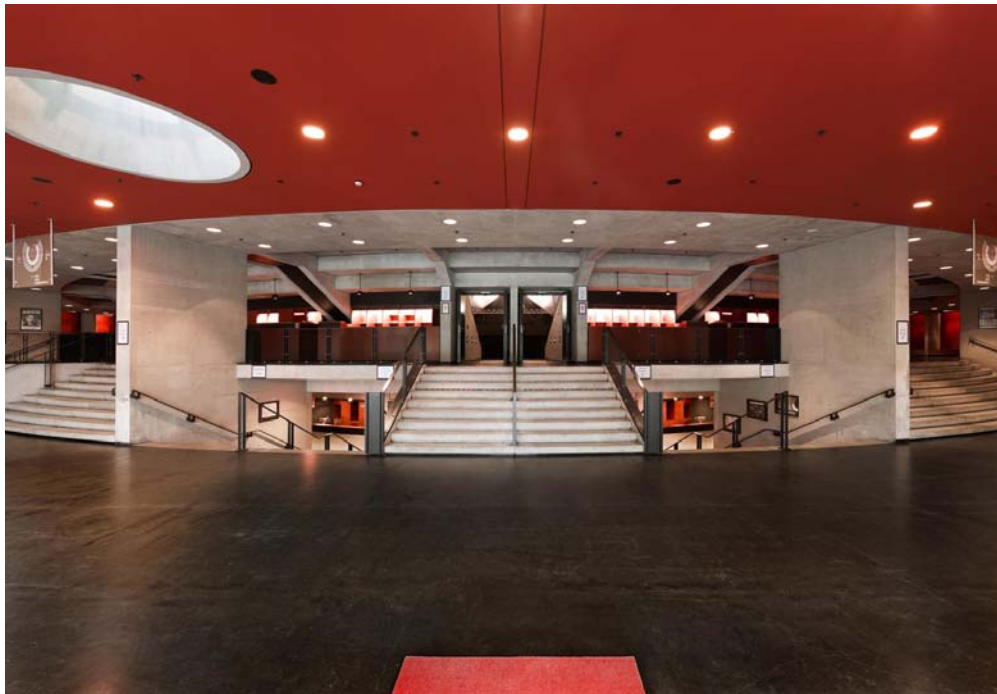


## History

- » 1980 Established as a circus tent
- » 1999 Construction of the new Tempodrom began
- » 2001 Premier event: European Film Awards
- » 2008 First climate-neutral venue in Germany



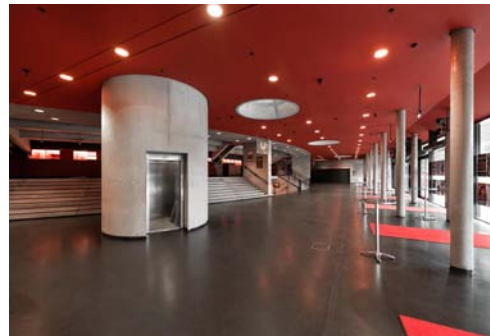




## » The Foyer

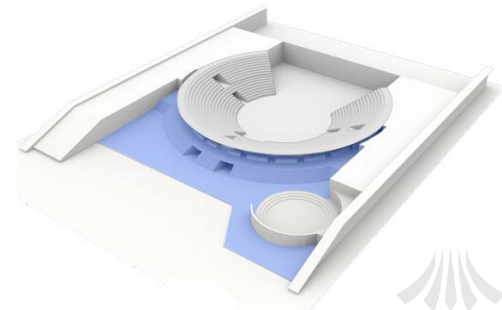
*The Foyer extends in a semi-circle over 3 floors around the Big Arena. From here all rooms and areas in the building can be easily accessed, also by the disabled.*

*If more space is required, the Small Arena can be integrated into the foyer through the opening of mobile partition walls.*



## Details

- » Area approx. 1,000 m<sup>2</sup>
- » Ceiling height 4.20 m
- » Capacity of up to approx. 1,200 guests





## » The Foyer

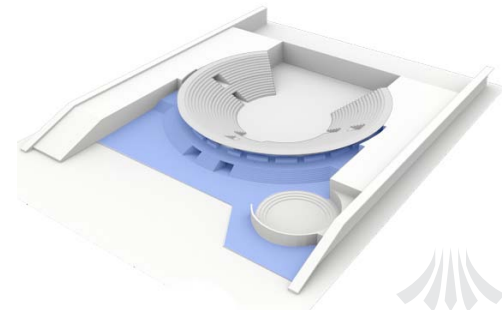
### » Variable staging forms

*From a classic reception to small exhibition spaces and large catering areas, to glittering after show parties, the Foyer provides the perfect surroundings for all types of event.*

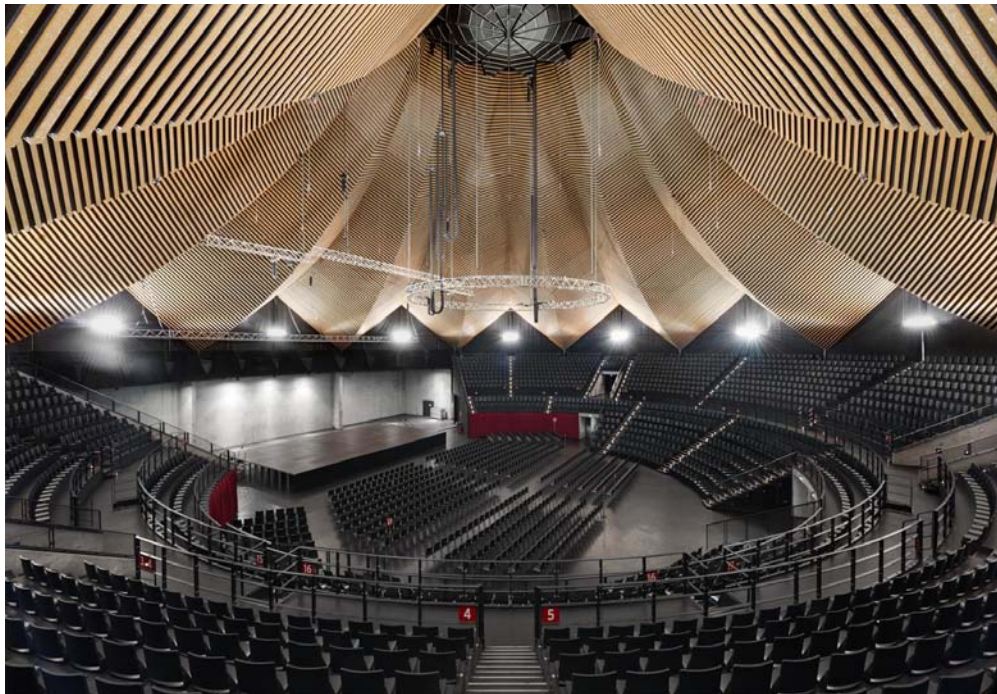


### Details

- » Area approx. 1,000 m<sup>2</sup>
- » Ceiling height 4.20 m
- » Capacity of up to approx. 1,200 guests



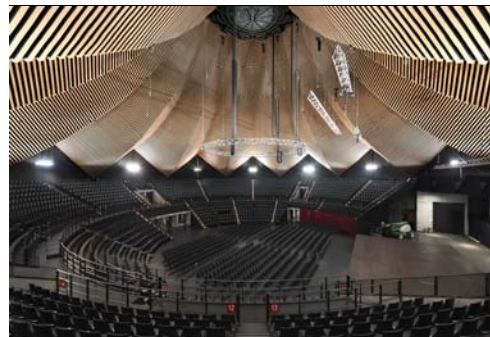




## » The Big Arena

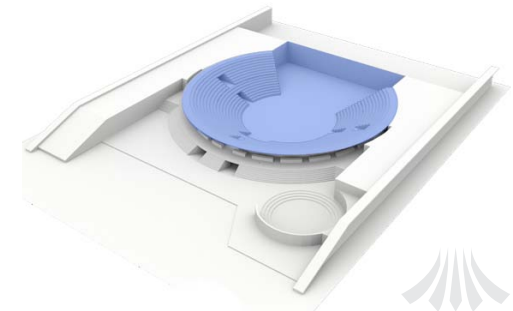
*The Big Arena is the heart of the Tempodrom. Built as a modern amphitheatre the upper and lower circles provide an intimate proximity between the stage and guests. Flexible room elements create a variable space for the most diverse events such as conferences, congresses, gala dinners, product presentations, receptions, awards, TV shows and trade exhibitions.*

*The ring area with a diameter of 25 m can be individually enlarged by retracting the mobile lower circle tribunes. The architectural highlight of the building is created by the ceiling based historically on the circus tent that rises to a height of 30 m at the centre of the arena.*

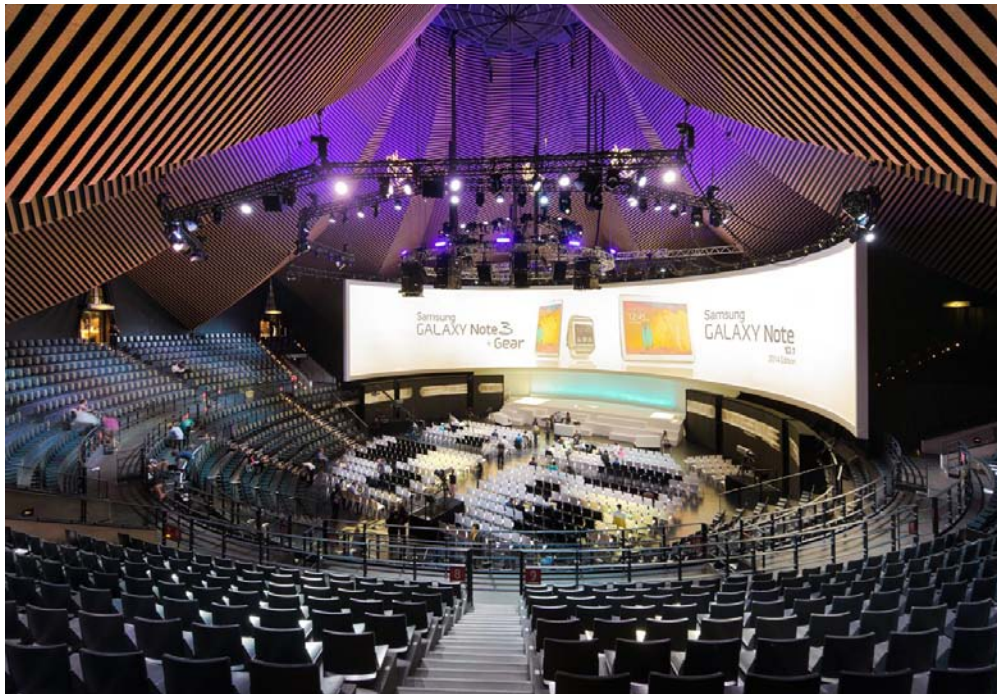


### Details

- » Area (total) approx. 2,800 m<sup>2</sup>
- » Area (ring/lower area) approx. 1,400 m<sup>2</sup>
- » Capacity of up to approx. 3,500 guests



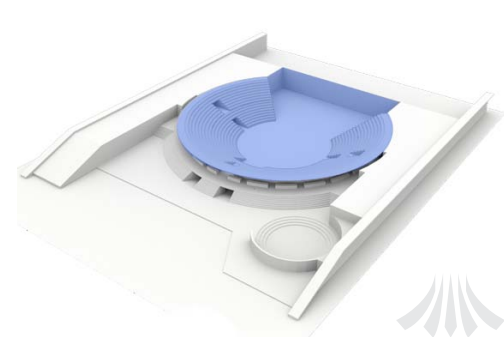




## » The Big Arena

### » Conferences (upper circle + lower circle + ring)

*In the conference sector the Big Arena can with full use of all tribunes (in combination with a flexible catering concept and foyer enlargement, for example through marquees on the forecourt) accommodate approx. 3,000 guests.*



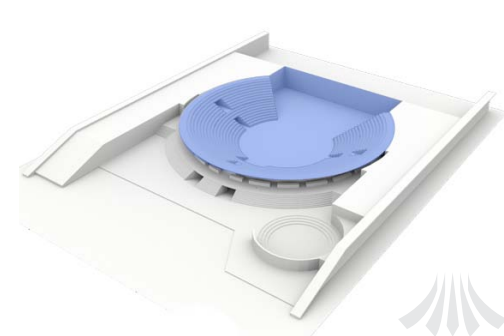
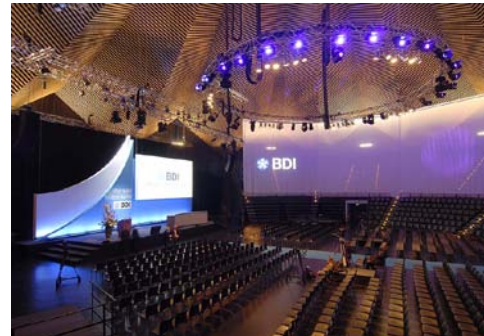




## » The Big Arena

### » Conferences (lower circle + ring)

For conferences with up to 1,400 guests, the upper circle seating of the Big Arena can be concealed through a suspended ceiling or lighting and decorative scenery either in full or partially depending on requirements.



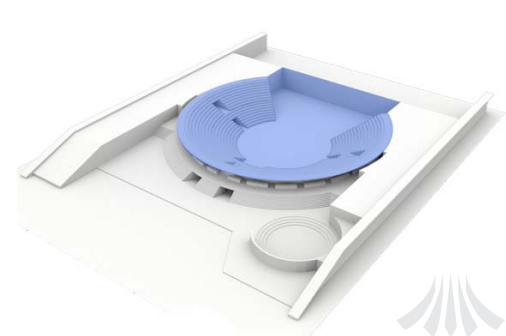
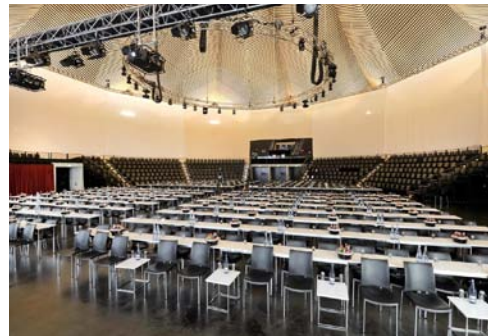
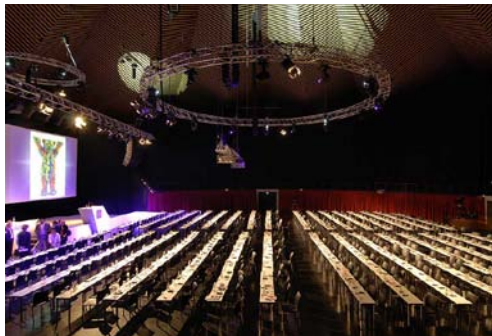
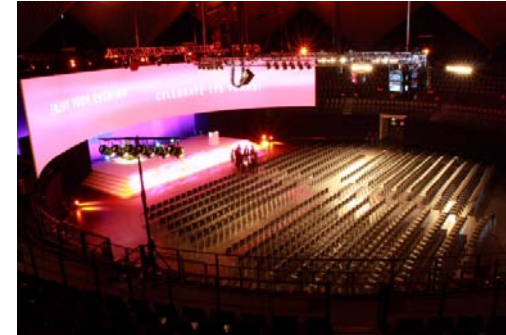




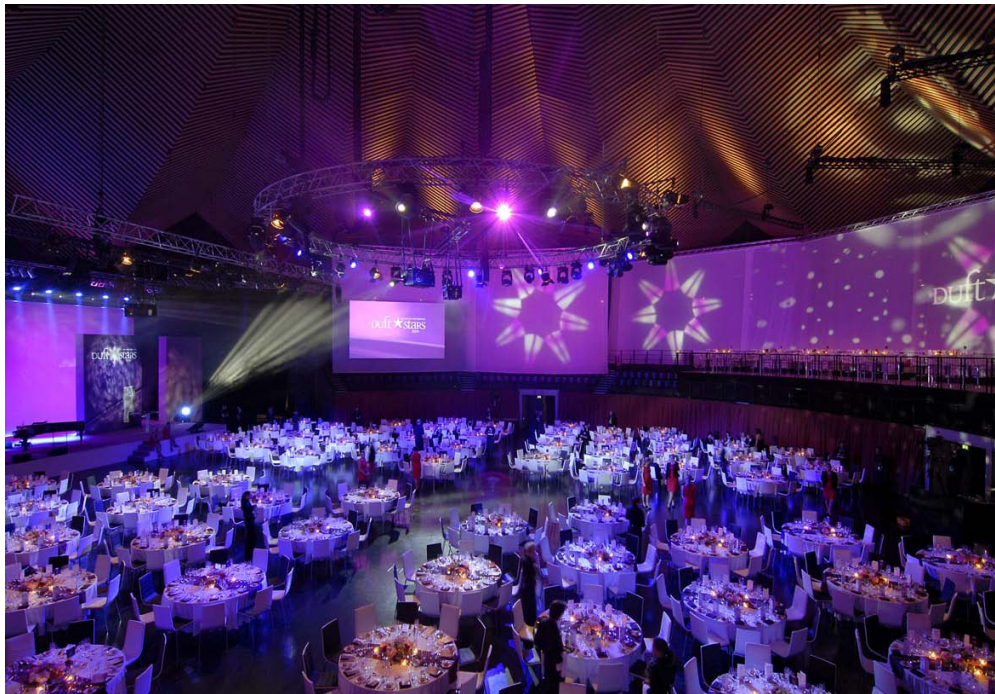
## » The Big Arena

### » Conferences (ring)

*Through retracting the mobile lower circle tribunes, a generous conference area is created at ring-level for a variety of seating options, from classic rows to parliamentary variations with tables to a relaxed bistro option. Anything is possible.*



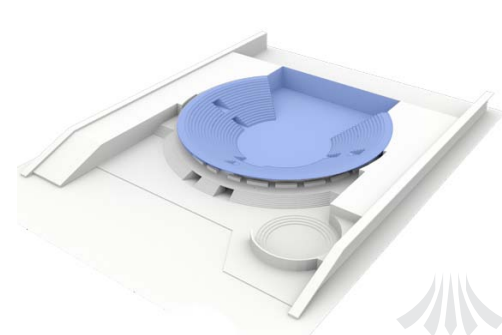




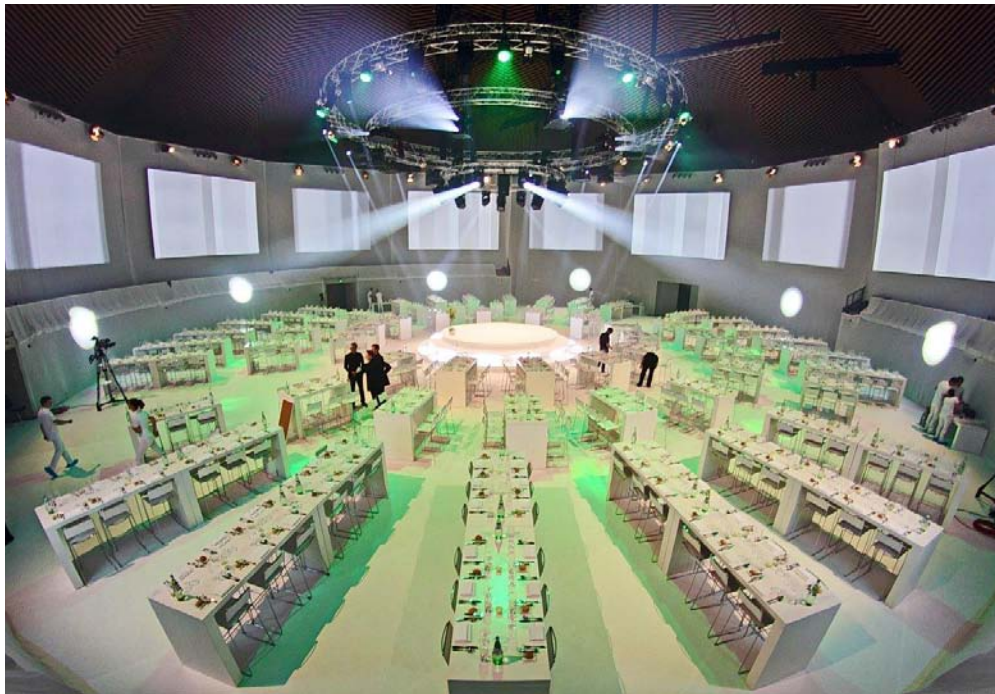
## » The Big Arena

### » Gala dinner (round tables)

Gala dinners are one of the classics in the Tempodrom portfolio. Through retracting the lower circle tribunes, up to 800 guests can be accommodated at ring level, the upper circle can be concealed or artistically styled in a variety of ways.



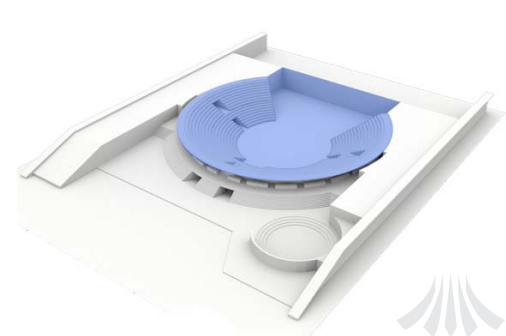
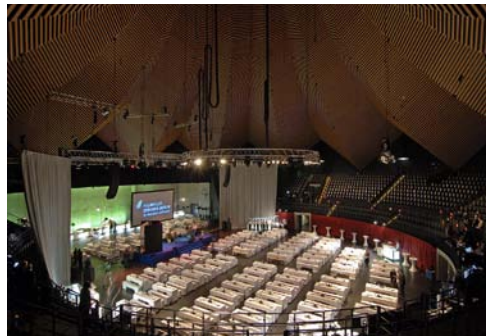




## » The Big Arena

### » Gala dinner (long tables)

*Through the use of long tables, the capacity can be increased for up to 1,000 guests, whereby the house stage is fully removed and the back-stage area can be used up to the rear wall of the house.*



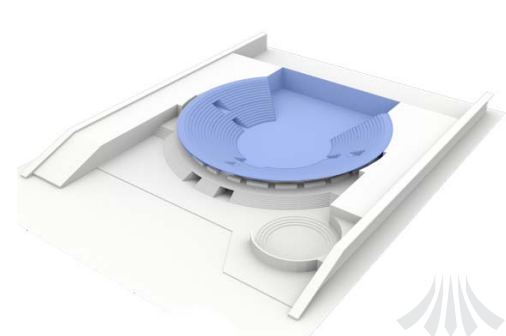




## » The Big Arena

### » Evening Events (mixed seating)

*Evening events with a mix of standing and seated spaces can be implemented in many variations and sizes (up to approx. 2,000 guests), with or without a stage, with or without use of the tribunes, as well as with combined indoor and outdoor in connection with the foyer, forecourt and roof terrace.*



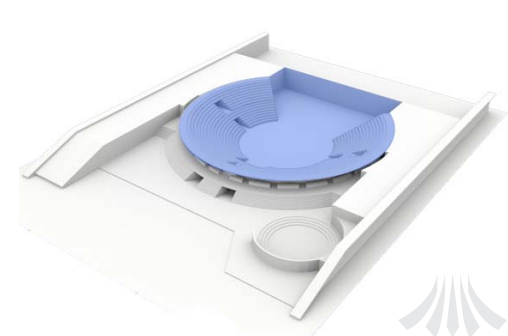




## » The Big Arena

### » Evening Events (special seating)

*Whether exhibition and trade fair stands, catwalks, room in a room concepts or centre stage particularly in the scope of product presentations, fashion shows, award ceremonies or trade fairs, the Big Arena offers almost infinite fitting possibilities.*







## » The Small Arena

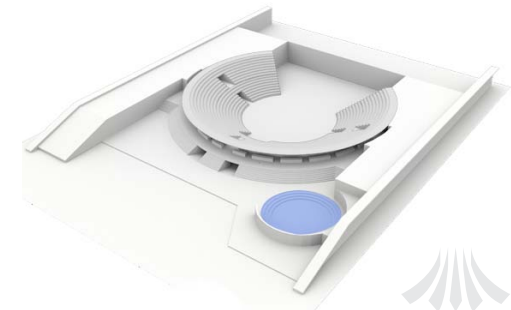
*The highly versatile Small Arena is a separately usable venue with its own entrance and foyer. The all-rounder has a flexible stage as well as lighting and sound technology. It accommodates up to 400 guests and with a base area of 115 m<sup>2</sup> and offers adequate room for a variety of smaller events.*

*For larger events, the Small Arena can be joined to the surrounding foyer area by opening up the mobile partitions and it can be integrated into events in the Big Arena in a variety of ways.*



### Details

- » Area (total) approx. 255 m<sup>2</sup>
- » Area (ring) approx. 115 m<sup>2</sup>
- » Capacity in accordance with seating



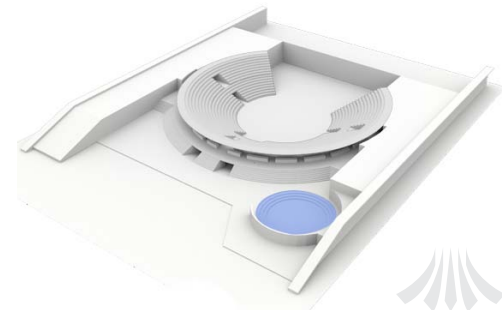




## » The Small Arena

### » Conferences

*The circular and intimate scope of the Small Arena offers a somewhat alternative setting for conferences with up to 111 guests. With the additional use of the step seating/cushions the capacity can be increased to up to approx. 300 guests.*



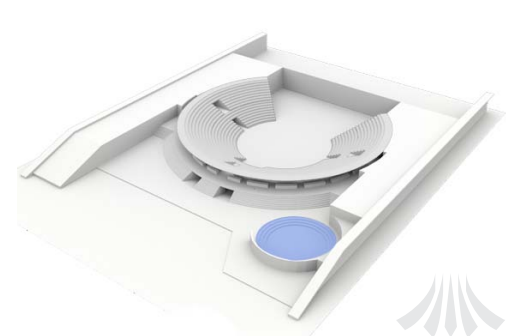




## » The Small Arena

### » Evening Events

*Also for product presentations, exhibitions, festive receptions or glittering parties (with or without combination of the foyer to the Big Arena) the Small Arena has a big presence.*







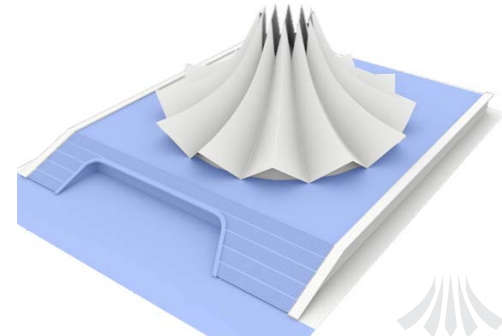
## » The Forecourt / Roof Terrace

*The Tempodrom is encompassed by a large forecourt and generous roof terrace that provide versatile spaces for receptions, marquees, shuttles, catering areas in all seasons. Both areas can be used independently or combined for indoor/outdoor events.*

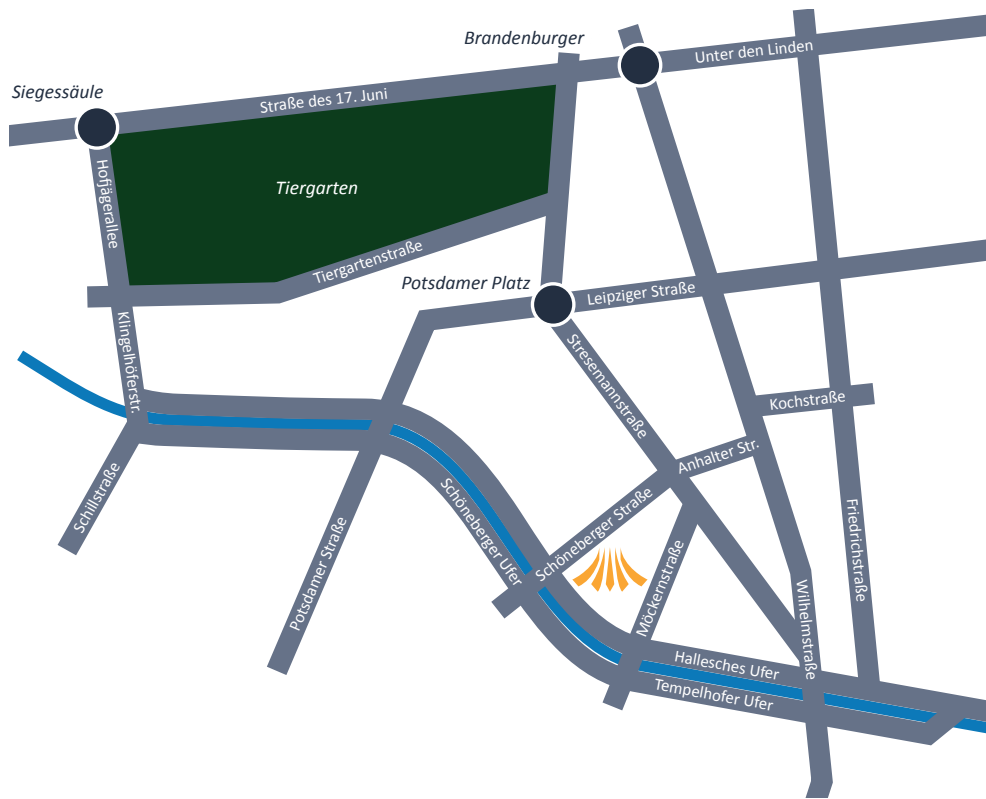


## Details

- » Area (forecourt) approx 2,000 m<sup>2</sup>
- » Area (roof terrace) approx. 3,500 m<sup>2</sup>
- » Capacity in accordance with seating







## » Location and Contact

Tempodrom  
Betriebsgesellschaft mbH & Co. KG  
Möckernstraße 10  
10963 Berlin

Fon +49 (0) 30-747 37 - 0  
Fax +49 (0) 30-747 37 - 210  
[info@tempodrom.de](mailto:info@tempodrom.de)

Further information at [www.tempodrom.de](http://www.tempodrom.de)

- ✓ Central location at the heart of the capital
- ✓ At Anhalter Bahnhof in direct proximity to Potsdamer Platz
- ✓ Embedded in Europe's most modern hotel landscape currently with over 133,000 beds
- ✓ Bus, suburban rail and underground stations in the direct vicinity

Cooperation partners:

