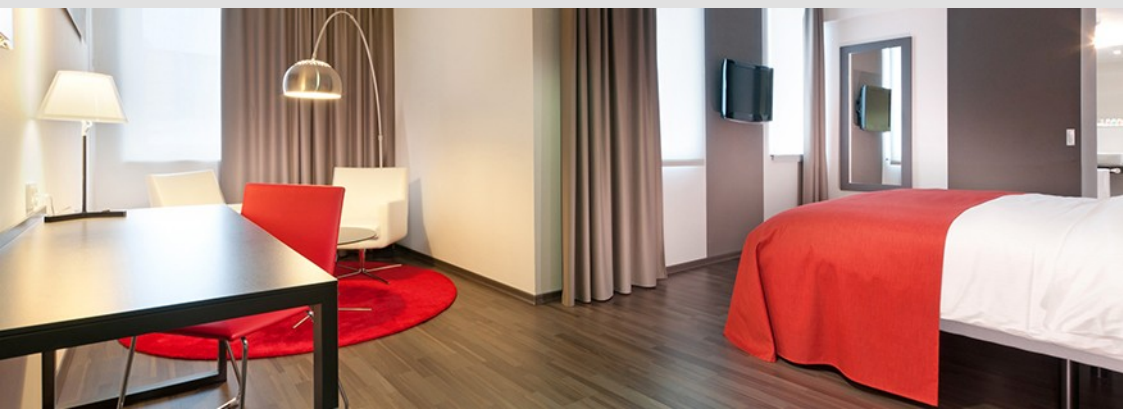
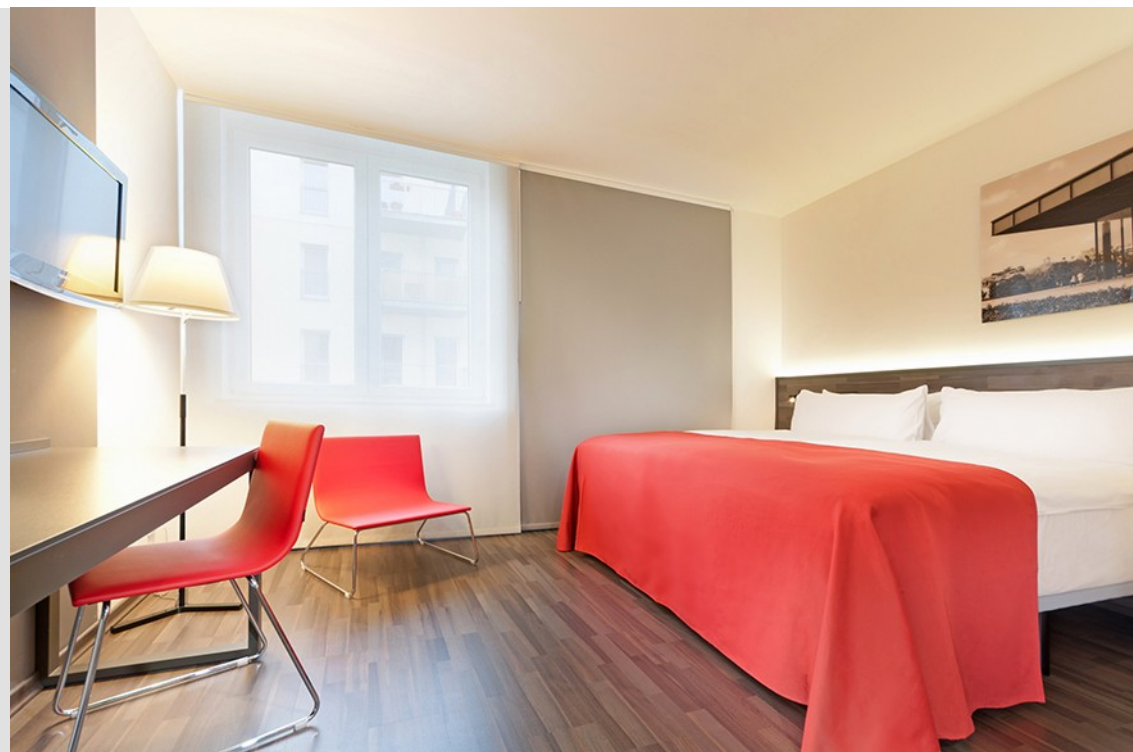




Hotelrooms and Suites

- 229 spacious and modern rooms, all are air-conditioned and equipped with Minibar, Direct dial telephone, international TV and radio program as well as one safe.
- 151 TRYP Rooms, 21 sqm, King Size Bed and DreaMax mattress
- 45 TRYP Premium Rooms, 25 sqm, King Size Bed and DreaMax mattress, espresso machine, bathroom with rain shower, bathrobe and bath slippers, iron and iron-board
- 1 TRYP Junior Suite, 30 sqm, King Size Bed and DreaMax mattress, espresso machine, bathroom with rain shower and bathtub, bathrobe and bath slippers, iron and iron-board, separate seating corner, iPod-Docking station
- 12 TRYP Family Rooms, 28 sqm, King Size Bed and DreaMax mattress, bathroom with bathtub, one or two loft beds
- 20 Handicapped accessible Rooms, 28 sqm, King Size Bed and DreaMax mattress, special equipped for handicapped people



Restaurant & Bar



Restaurant and Bar n°33

Our Restaurant and Bar n°33 is located on the ground floor, has 100 seats and expects you all day with an International kitchen. Enjoy snacks and sandwiches during lunch time and finish an exciting day with cool drinks and tapas at our bar.

- Fine selection of wine
- International spirits
- Central coffee breaks with homemade dishes and coffee machine
- Modern and comfortable atmosphere



Meetings & Events



TRYP BERLIN MITTE

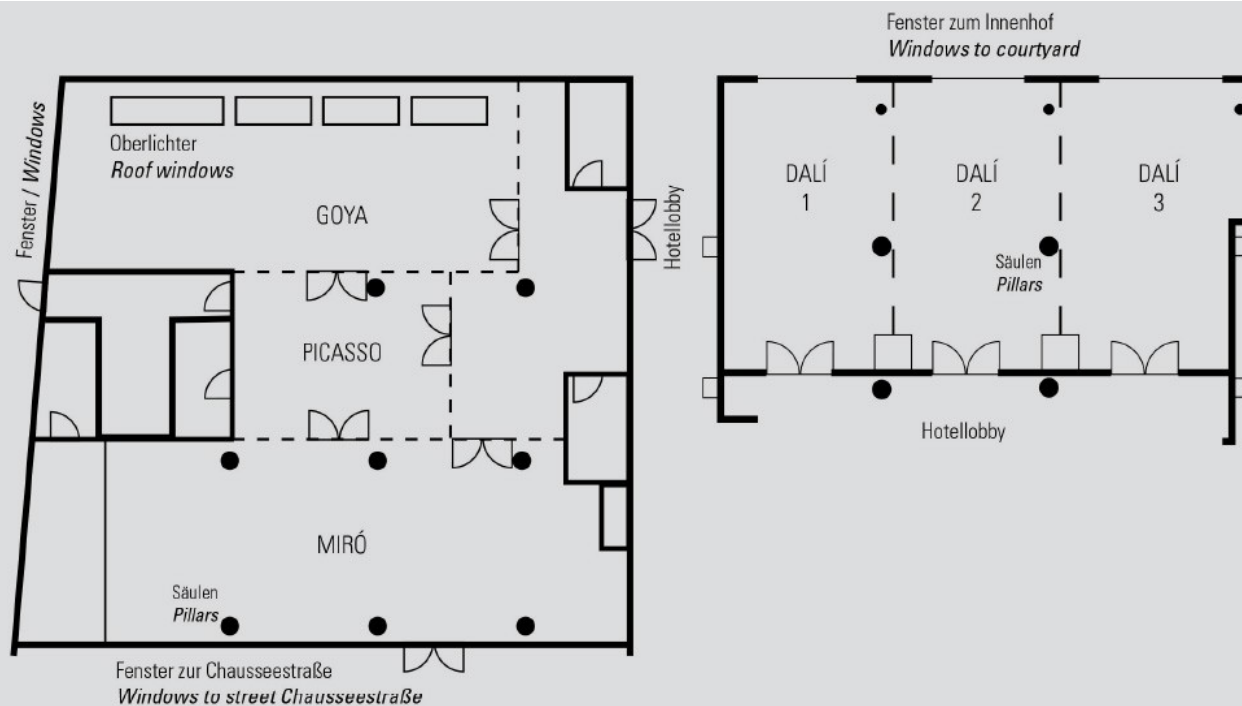
6 combinable meeting rooms with state-of-the-art audiovisual equipment, natural light and a capacity for up to 240 delegates. All meeting rooms are situated on the ground floor and are accessible for cars.

Maximum Capacities of all Meeting rooms:

- Dalí 1: 30 Delegates
- Dalí 2: 30 Delegates
- Dalí 3: 30 Delegates
- Dalí 1+2+3: 90 Delegates
- Goya: 100 Delegates
- Picasso: 30 Delegates
- Miró: 120 Delegates
- Goya+Picasso+Miró: 240 Delegates



TRYP
BY WYNDHAM



MAßE UND KAPAZITÄTEN DIMENSIONS AND CAPACITIES

| TAGUNGSRÄUME Meeting Rooms | Fläche/Area (m²/sq.ft.) | Maße in m. Dimensions | Tageslicht Daylight | Bankett Banquet | Theater Theatre | Parlamentarisch Classroom | Boardroom Boardroom | U-Form U Shape |
|-------------------------------|----------------------------|--------------------------|------------------------|--------------------|--------------------|------------------------------|------------------------|-------------------|
| Dalí 1 | 46 / 495 | 5,35 x 8,60 | ja / yes | 20 | 30 | 24 | 12 | 15 |
| Dalí 2 | 45 / 484 | 5,23 x 8,60 | ja / yes | 20 | 30 | 24 | 12 | 15 |
| Dalí 3 | 47 / 506 | 5,47 x 8,60 | ja / yes | 30 | 30 | 24 | 12 | 15 |
| Dalí 1 + 2 + 3 | 138 / 1.485 | 16,06 x 8,60 | ja / yes | 80 | 90 | 60 | - | 33 |
| Goya | 108 / 1.163 | 14,08 x 6,61 | ja / yes | 60 | 100 | 54 | 39 | 42 |
| Picasso | 45 / 484 | 7,84 x 5,93 | nein / no | 20 | 30 | 24 | 12 | 15 |
| Miró | 126 / 1.356 | 18,66 x 7,17 | ja / yes | 70 | 120 | 60 | 39 | 42 |
| Goya + Picasso + Miró | 300 / 3.231 | - | ja / yes | 150 | 240 | 120 | - | - |

Service and Facilities

- Fully equipped Gym with sauna and roof terrace opened for 24 hours.
- 24 hour reception
- Wi-Fi free of charge (250 k/bits)
- Room Service
- Underground parking for 34 vehicles



Destination information

TRYP Berlin Mitte is a 4-star design hotel right in the heart of the German capital. It is a perfect located domicile for business and leisure travelers during a stay in Berlin. Put your finger on the pulse of the coolest experiences in this upper-chic city. The hotel is located close to Brandenburger Gate and the luxurious boulevard Unter den Linden, the fashion and art district with contemporary galleries and Berlin fashion labels are all within walking distance as well. The railway and subway stations are literally in front of the hotel.

Distances at a glance:

- 0,2 km from metro station "Naturkundemuseum"
- 1,4 km from Main station
- 8,4 km from Airport Tegel
- 24,6 km from Airport Schönefeld
- 23 km Airport Berlin Brandenburg
- 2,3 km from Brandenburger Gate
- 3,5 km from Alexanderplatz
- 0,9 km from Memorial Berlin Wall
- 4,4 km from Berlin Congress Center

