





BASIC FACTS

Loft	380 qm
Rooftop	500 qm
Meetingroom 1	25 qm
Meetingroom 2	21 qm
Meetingroom 3	80 qm
Max Capacity Indoor	200 PAX
Max Capacity Indoor + Outdoor	300 PAX



Fully equipped bar in the loft and on the roof terrace



Integrated system of curtains and mobile separating walls



Surround sound system in the loft



Lighting tracks with spots



Windows with blinds



Fiber-optic internet / high-speed WiFi



3 heavy current sockets
3 Network sockets



Elevator (L 140 x H 215x B 165)
Accessible, mobile ramps available



2 Parking lots in front of main entrance



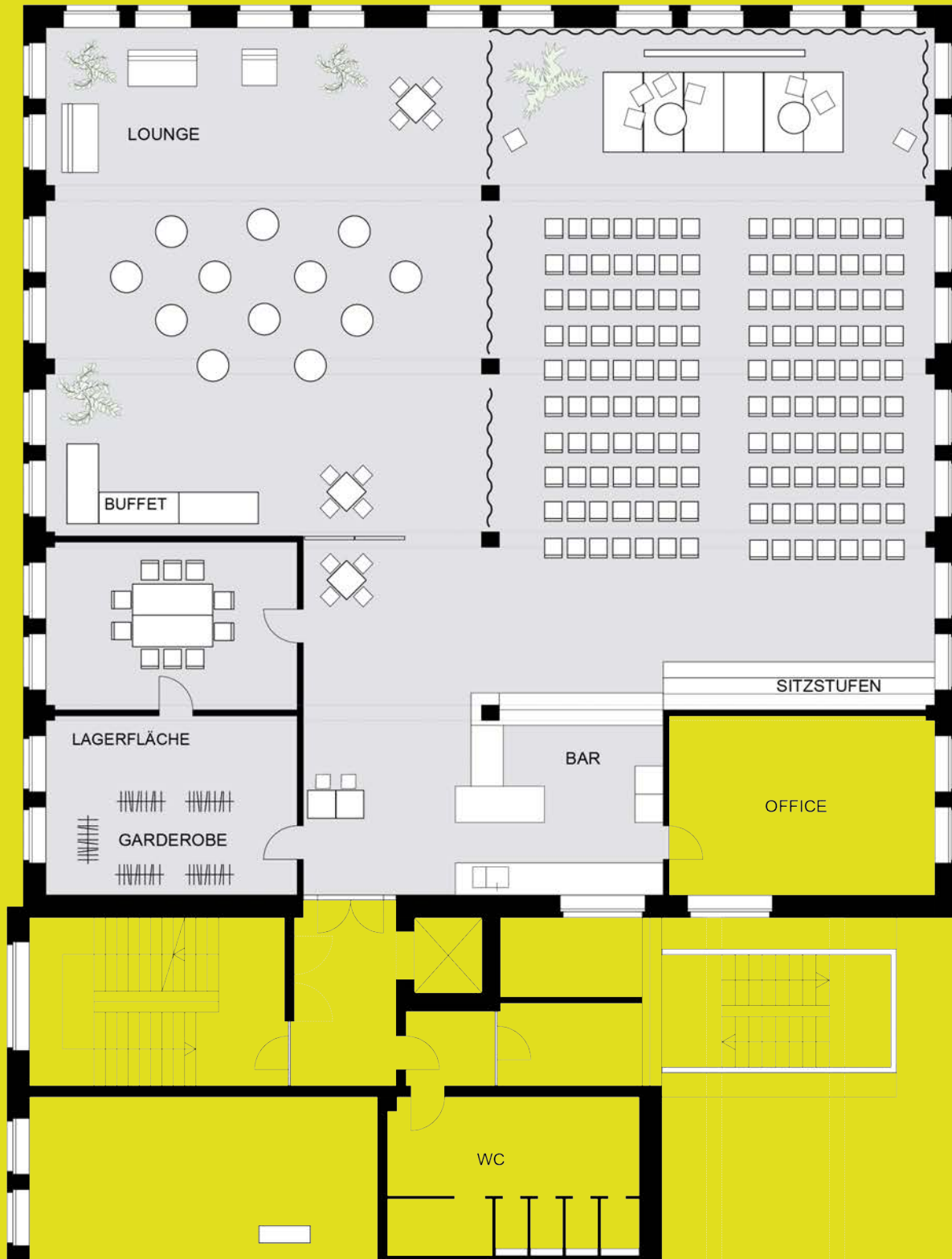
Wheelchair-accessible toilet







CONFERENCE



M 1:250

2,5 m

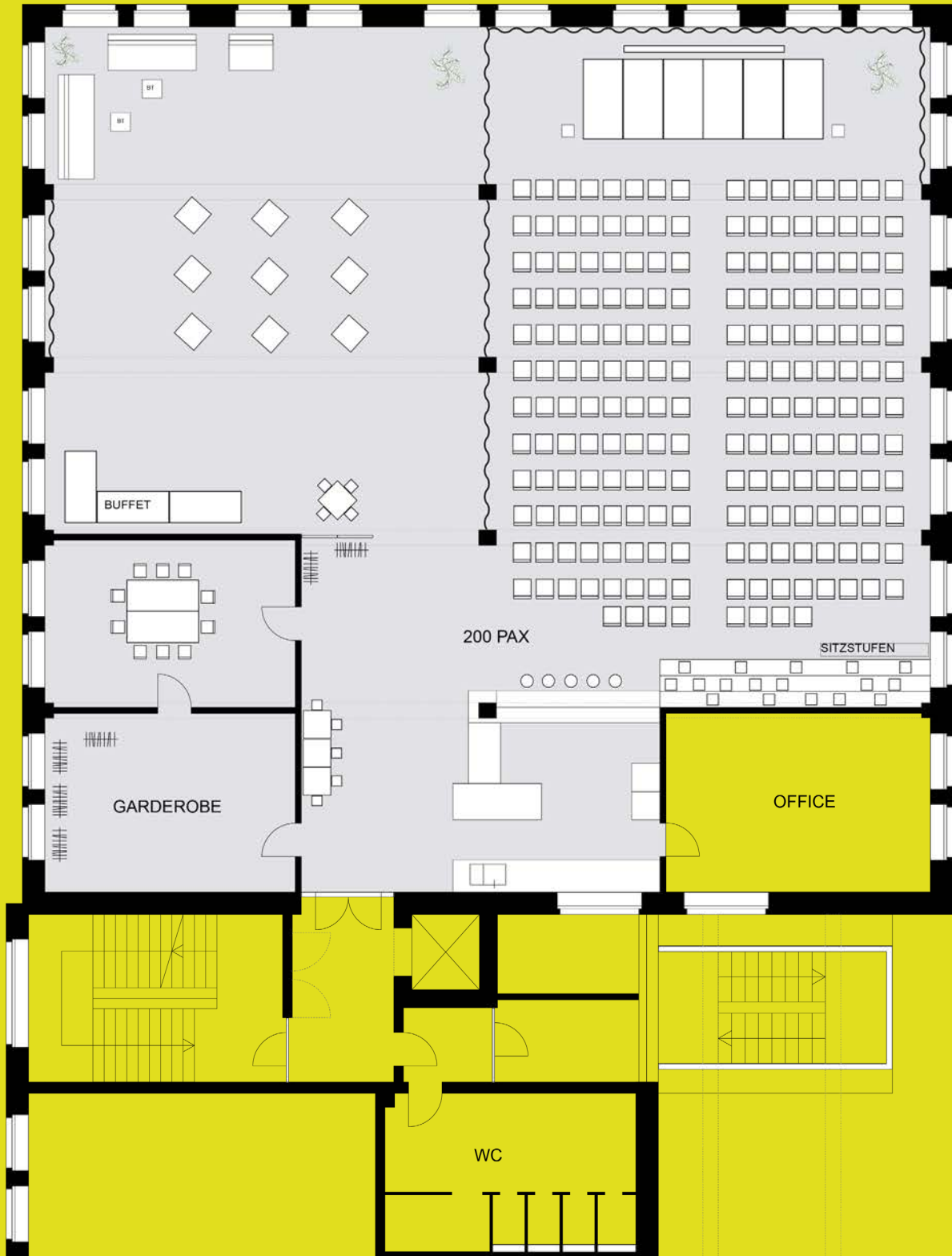
5 m

10 m





CONFERENCE



M 1:250

2,5 m

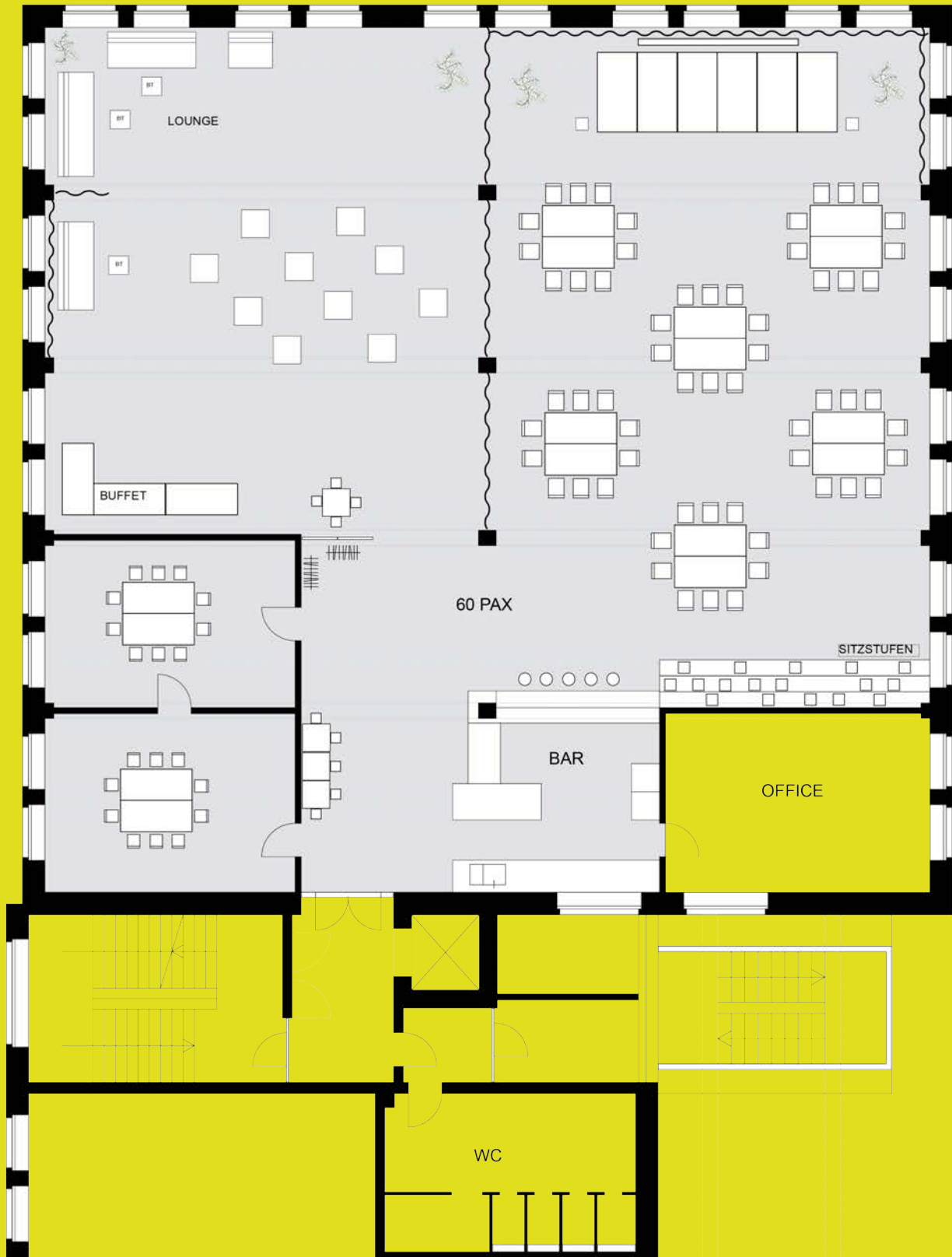
5 m

10 m





CONFERENCE



M 1:250

2,5 m

5 m

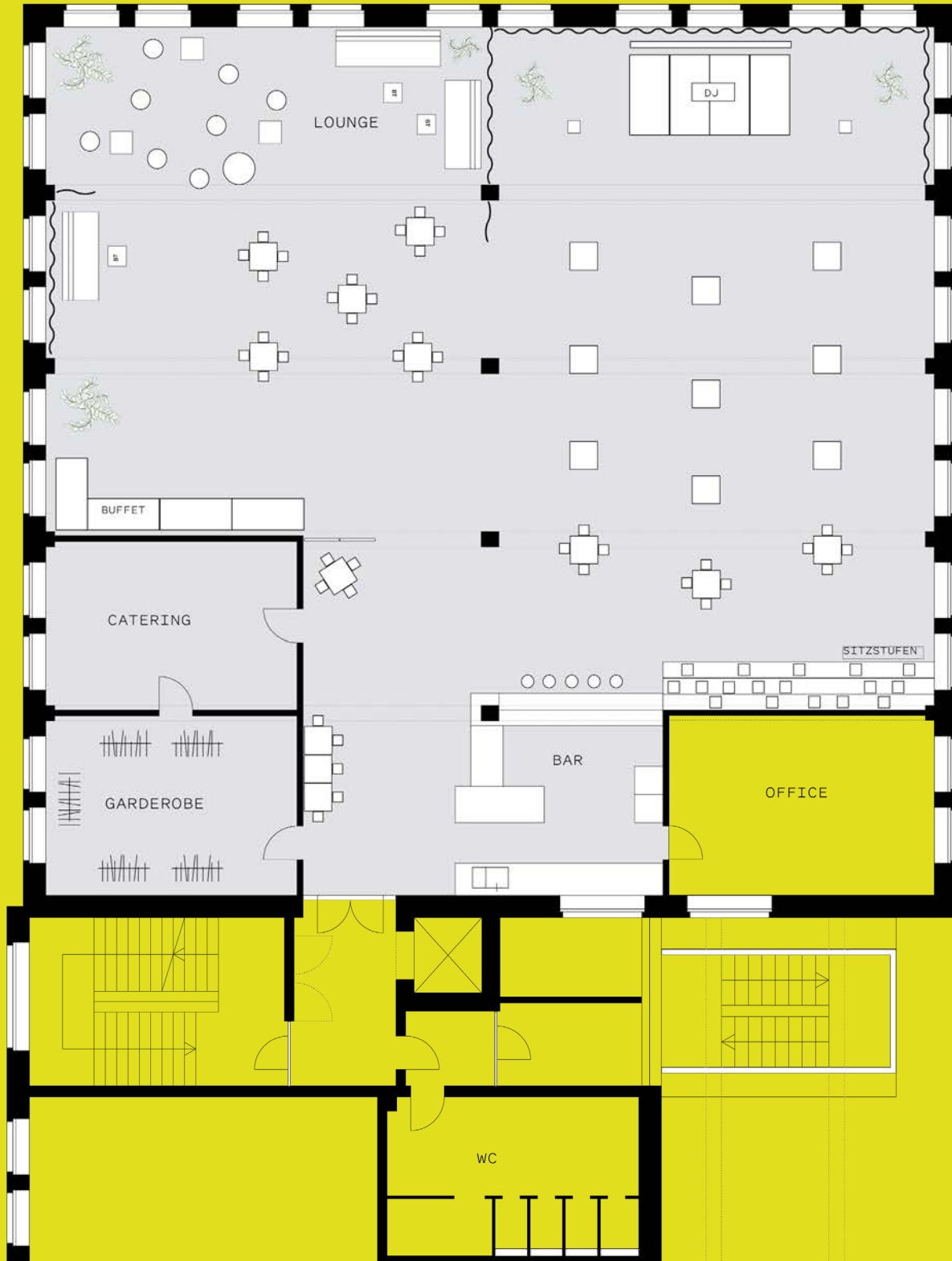
10 m







RECEPTION



M 1:250

2,5 m

5 m

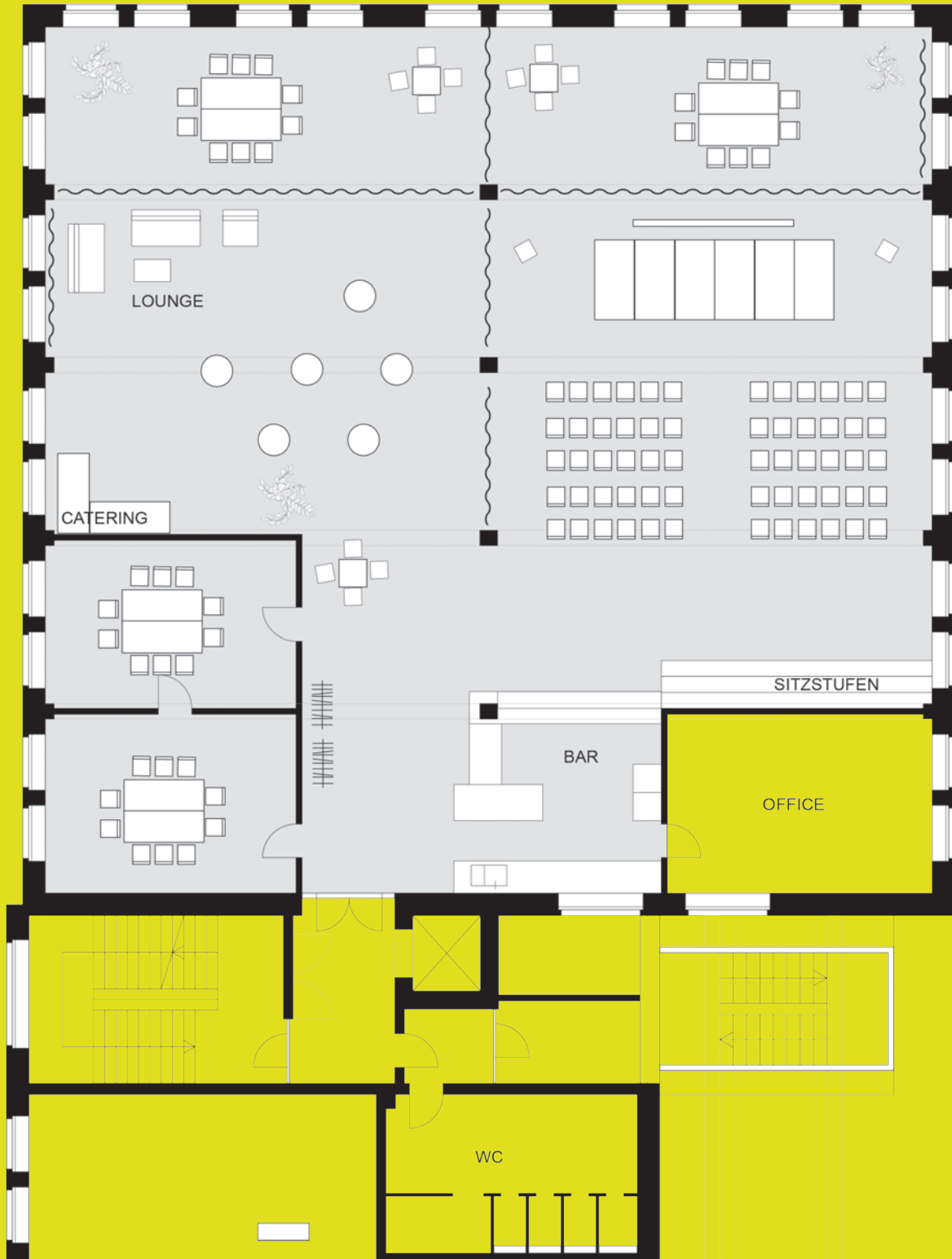
10 m







WORKSHOP



M 1:250

2,5 m

5 m

10 m





—  DINNER



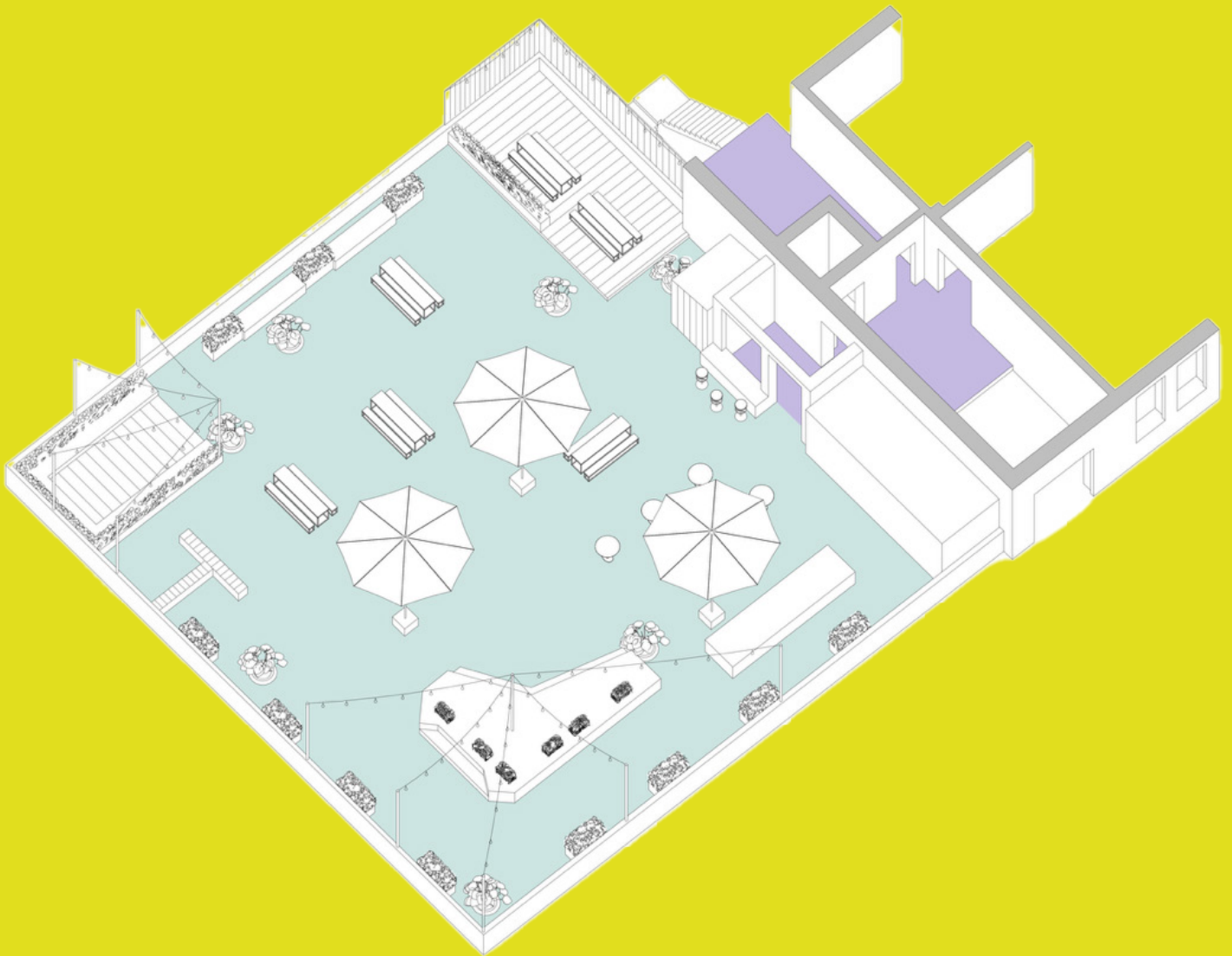
M 1:250 2,5 m 5 m 10 m

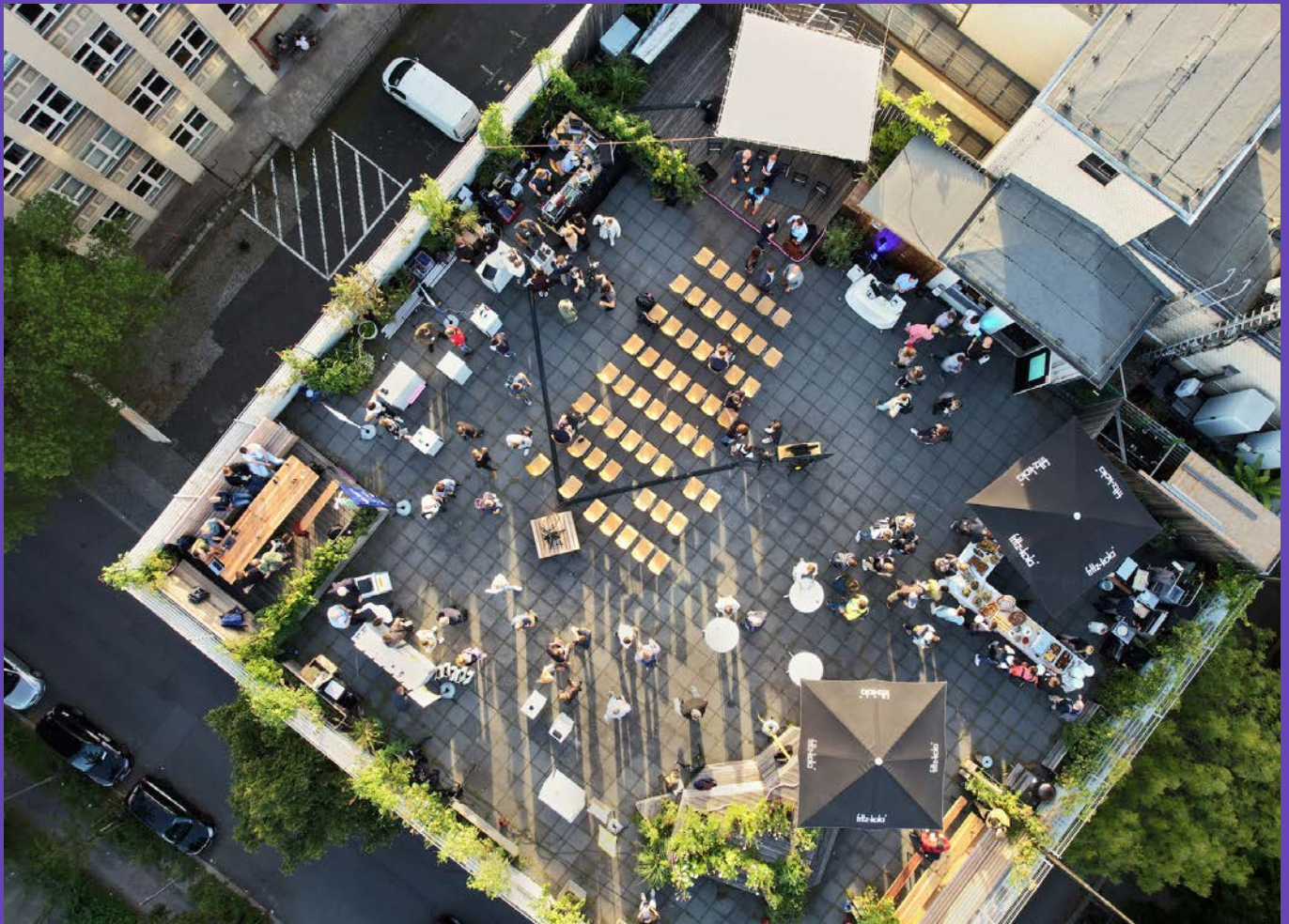


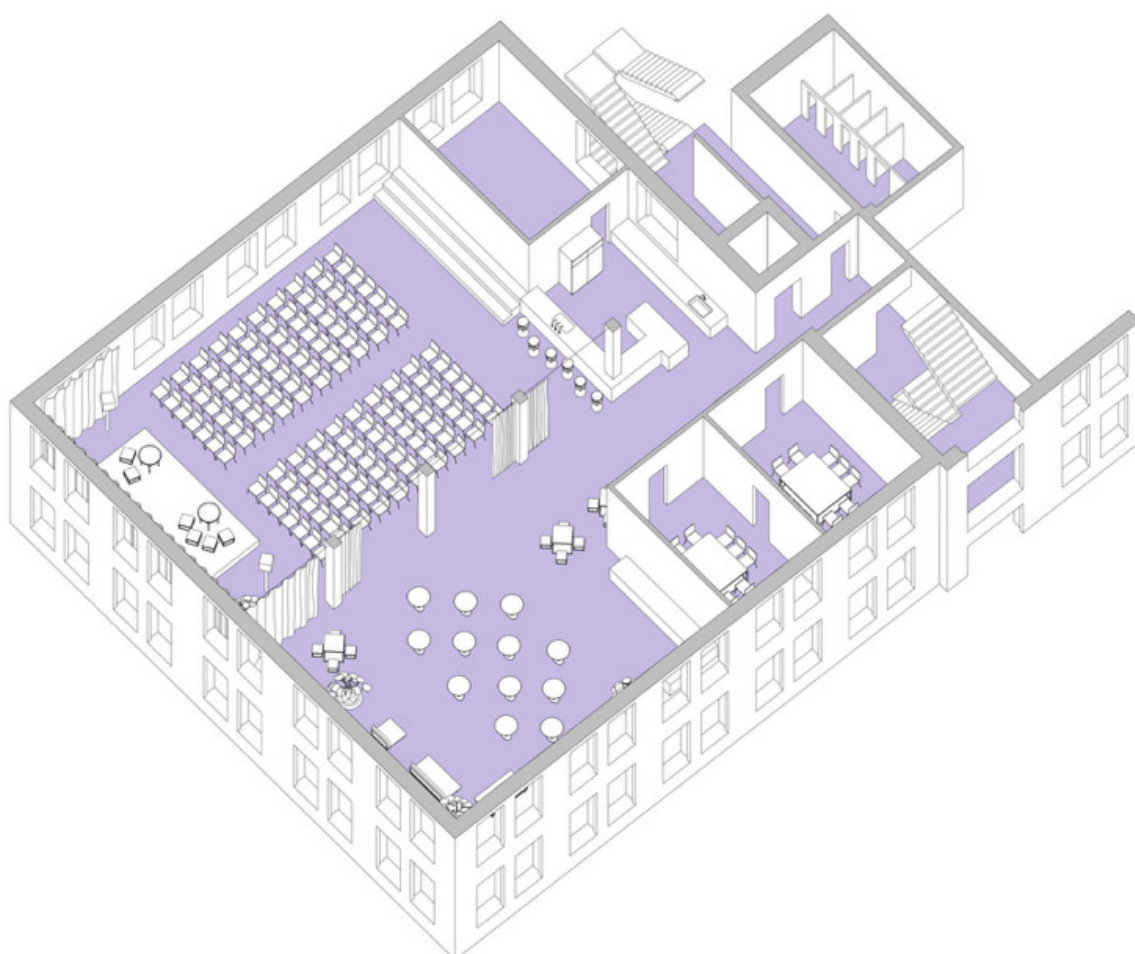
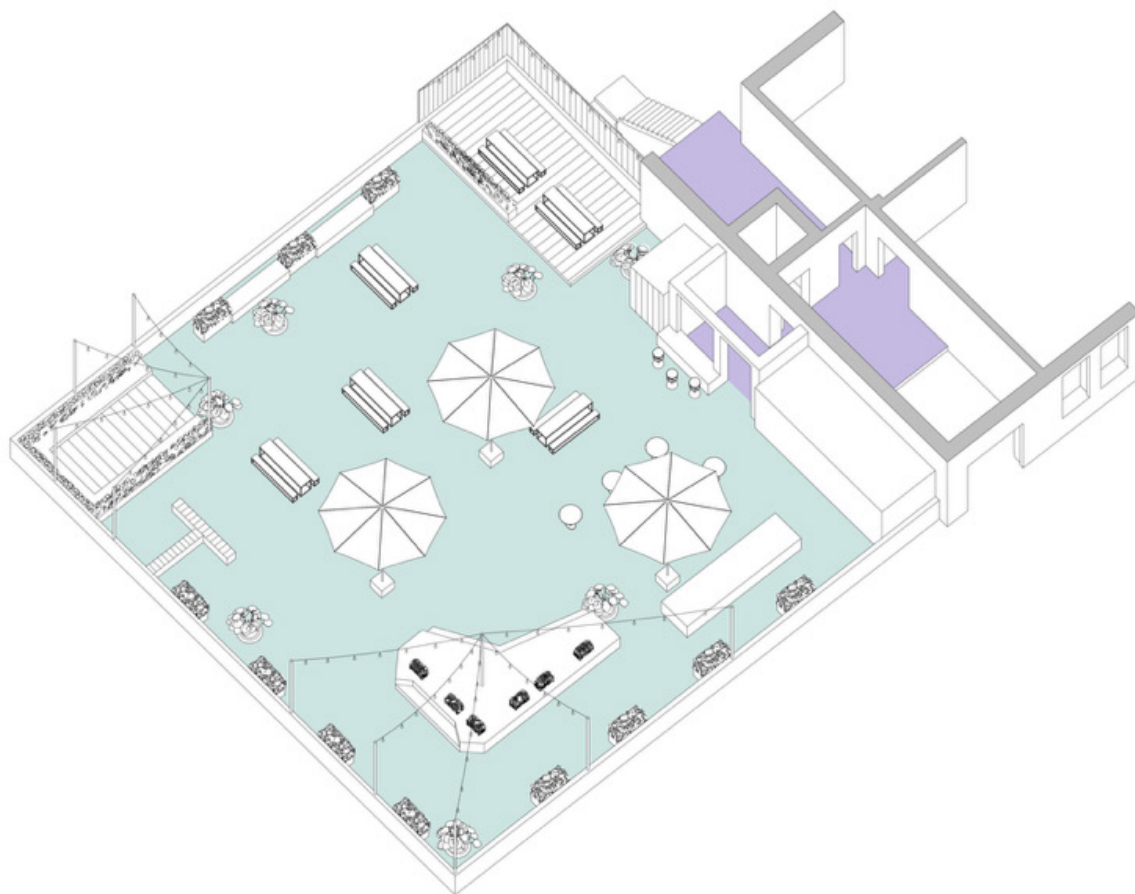




ROOFTOP









TECHNIK 4.OG

RH Raumhöhe

UKUZ Höhe Unterkante Unterzug

LB Lichte Breite Tür

KS Gastrokühlschränke



Netzwerkdose



Steckdose, einfach



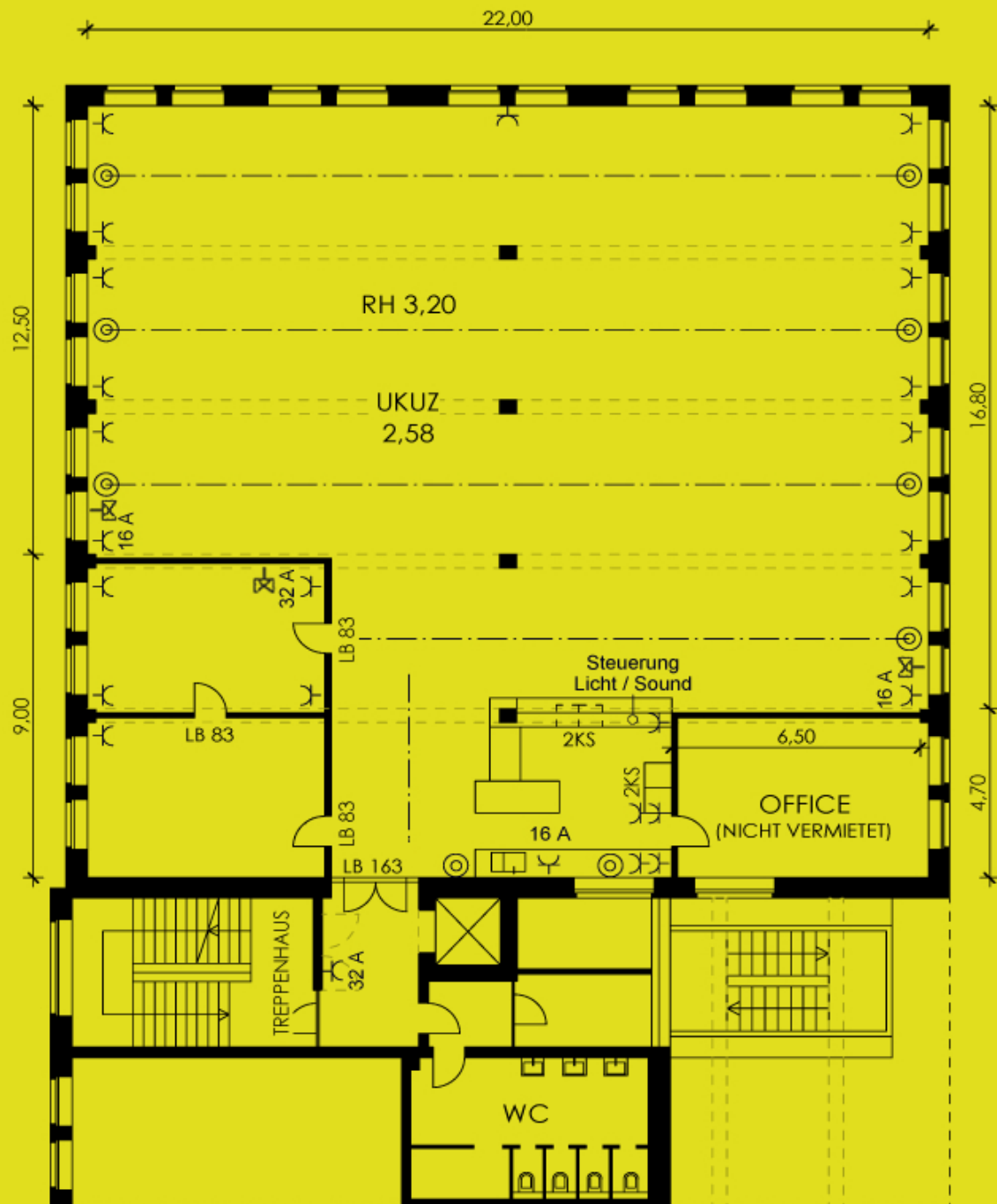
Starkstromdose 16 / 32 Ampere



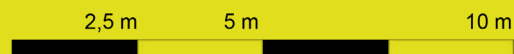
Decken-Lautsprecher



Lichtschienen mit variablen Strahlern / Downlights



M 1:250



We warmly welcome you to visit our event loft. Let us give you a tour of our space and show you its full potential. With our vast professional network, we can customize a comprehensive package to ensure your event is a success. Reach out to us today and let's start planning together!

www.colonianova.com
info@colonianova.com