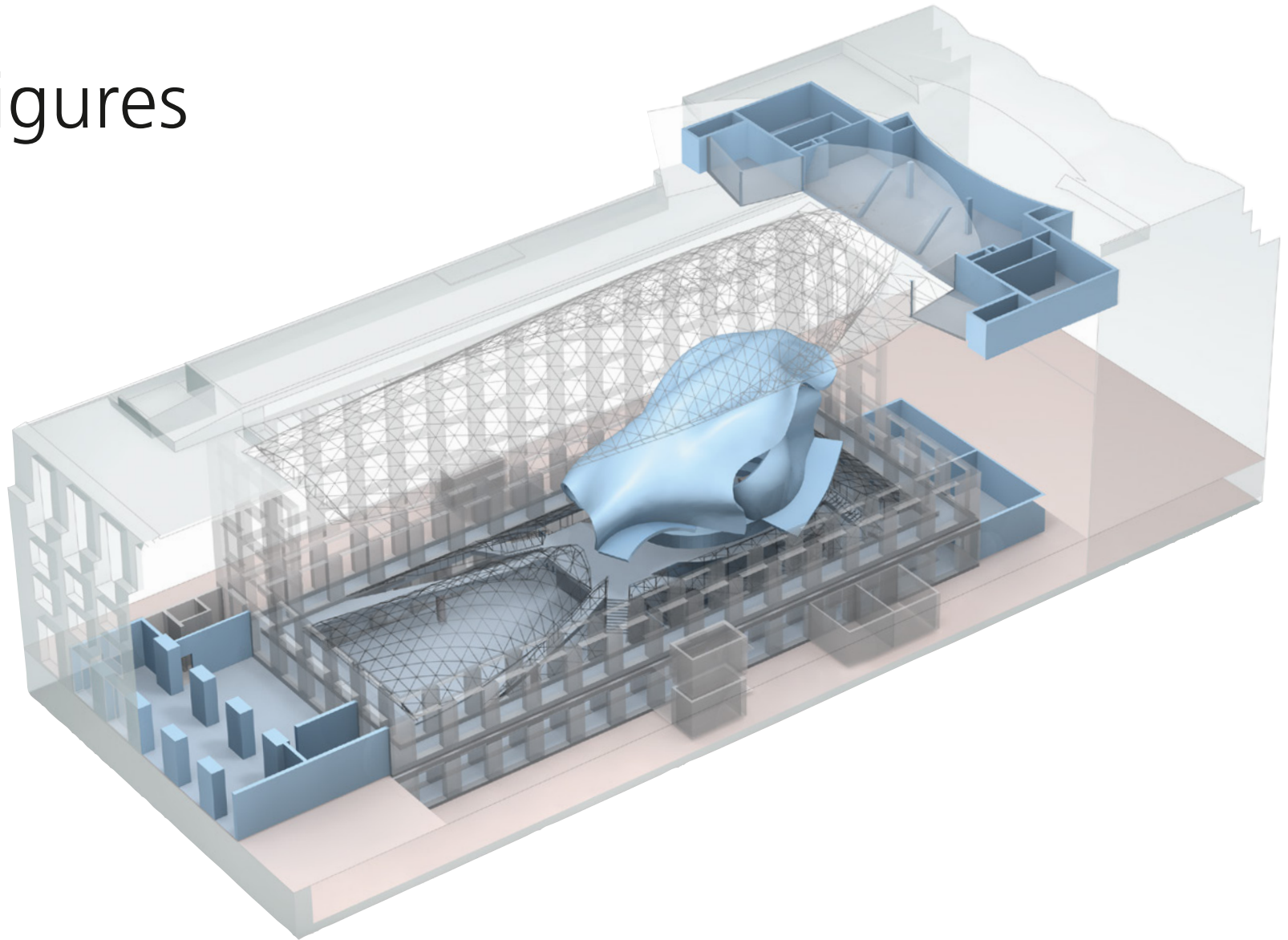


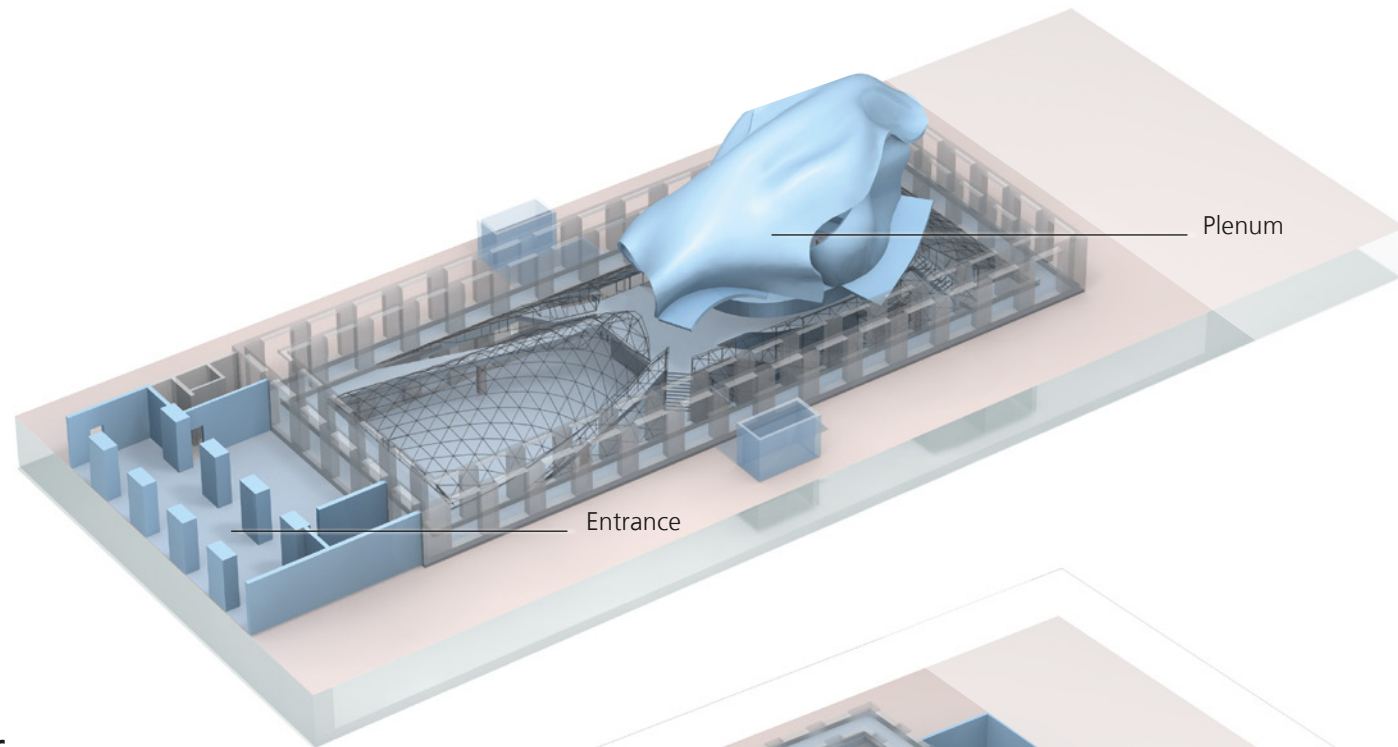
Facts & Figures

Event Planner

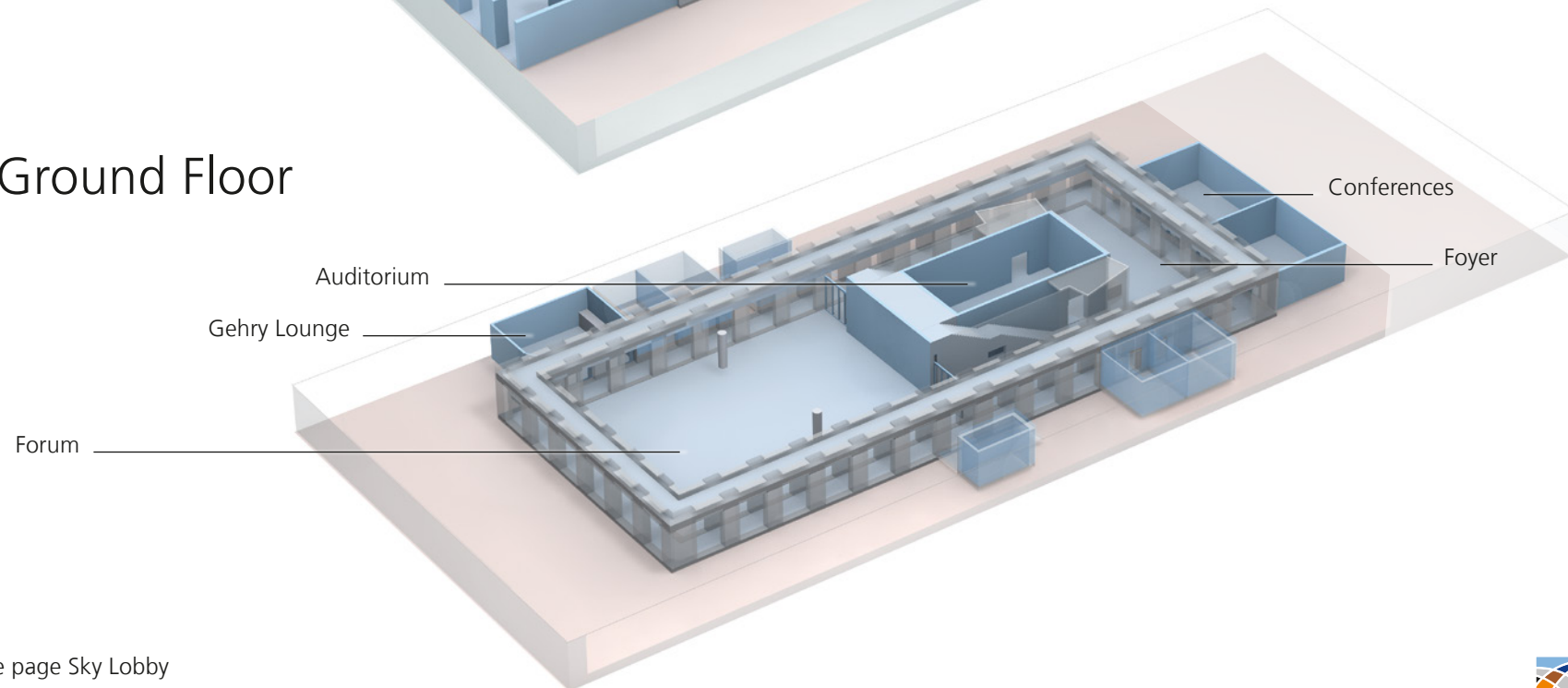


Here you will find all the details necessary for planning your event: floor plans, technical data and information on room design, capacities and services available at AXICA.

Ground Floor

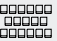
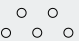


Lower Ground Floor



Top Floor » see page Sky Lobby
First Floor » see page First Floor

Capacities Overview

| SPACES | AREA | FLOOR | CLASSROOM  | THEATRE  | BANQUET  | RECEPTION  | BOARDROOM  |
|---------------------|--------|-----------|---|---|---|---|---|
| PLENUM | 188 m² | GF | 74 delegates | 80 delegates | - | - | 20 delegates |
| FORUM | 530 m² | LG | 250 delegates | 500 delegates | 350 delegates | 500 delegates | - |
| FOYER | 200 m² | LG | - | 84 delegates | 80 delegates | 250 delegates | - |
| GEHRY LOUNGE | 70 m² | LG | - | 50 delegates | 36 delegates | 50 delegates | 20 delegates |
| AUDITORIUM 1 & 2* | 107 m² | LG | 60 delegates | 100 delegates | - | - | 30 delegates |
| CONFERENCES 1 & 2* | 68 m² | LG | 30 delegates | 55 delegates | - | - | 25 delegates |
| CONFERENCES 3 & 4* | 55 m² | LG | 24 delegates | 40 delegates | - | - | 20 delegates |
| QUADRIGA | 65 m² | 1st Floor | - | 45 delegates | 36 delegates | 40 delegates | 26 delegates |
| CONFERENCES 5 & 6* | 86 m² | 1st Floor | 28 delegates | 70 delegates | - | - | 30 delegates |
| CONFERENCES 7 & 8** | 32 m² | 1st Floor | - | 20 delegates | - | - | 12 delegates |
| SKY LOBBY | 204 m² | Top Floor | 40 delegates | 80 delegates | 50 delegates | 80 delegates | - |
| SKY LOUNGES** | 46 m² | Top Floor | - | 25 delegates | 12 delegates | 20 delegates | 18 delegates |

* flexible partitioning ** separately only

Interior & Furnishing

- » fully air-conditioned rooms
- » double glass roof allows natural lighting on all floors
- » colour: red carpet, parquet flooring in arcades and Plenum, pine wall panels
- » white lighting, partly dimmable
- » designer furniture
- » fitted bar in the Gehry Lounge
- » Facilities accessible for people with disabilities
- » green electricity

Technology & Equipment

- » power points
- » technical cooperation with event production experts
- » goods lift (1.40 x 2.50 x 2.40 m high), capacity 27 (maximum load 2,500 kg), space between opened doors 1.39 m
- » separate delivery area (4.50 m wide x 3.00 m high), maximum load 3,500 kg
- » Wi-Fi

Services

- » in-house catering and service team
- » cooperation for equipment, decoration, photography, guest management and entertainment
- » in-house security team
- » hostesses (cloakroom service and admission)

We are happy to supply other services on request.

Adress

AXICA
Kongress-und Tagungszentrum GmbH
Pariser Platz 3 / D-10117 Berlin
Fon +49 30 200086-0

info@axica.de
www.axica.de

Delivery area / Delivery address

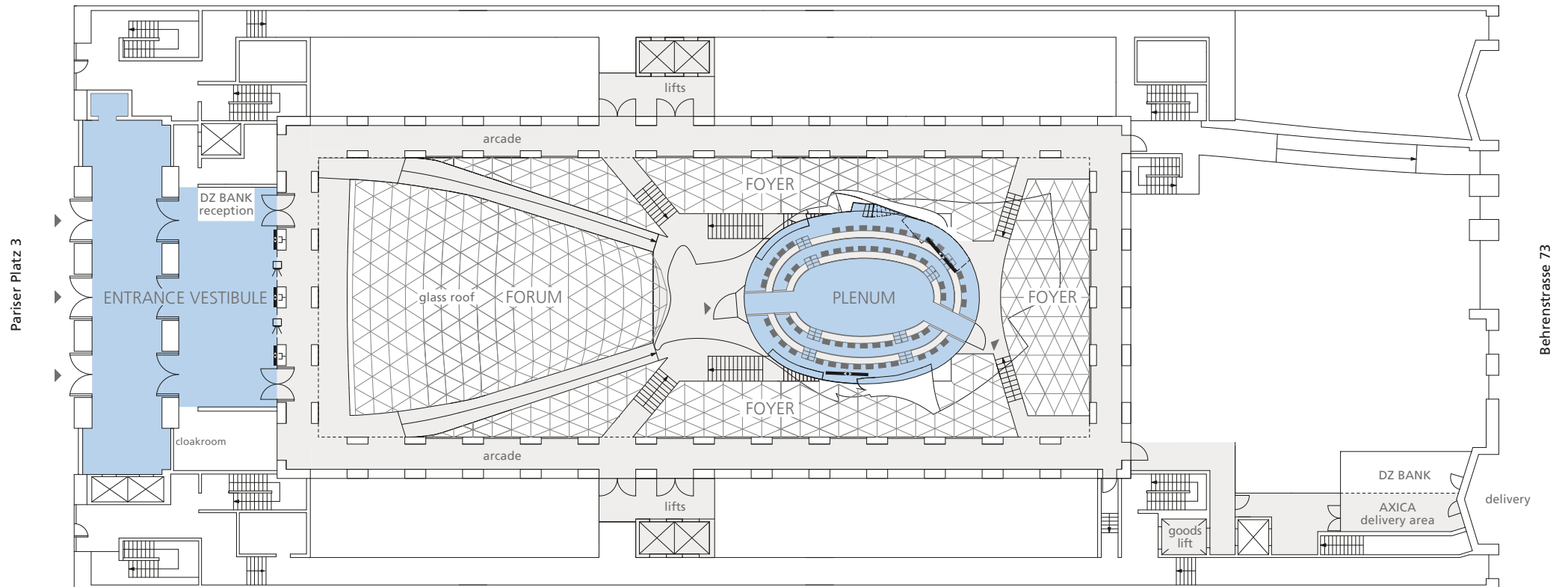
AXICA
Behrenstrasse 73 / D-10117 Berlin
Note: DZ BANK building / delivery gate / bell on the left



Ground Floor

M 1:400

10 5 2,5 1 0,5

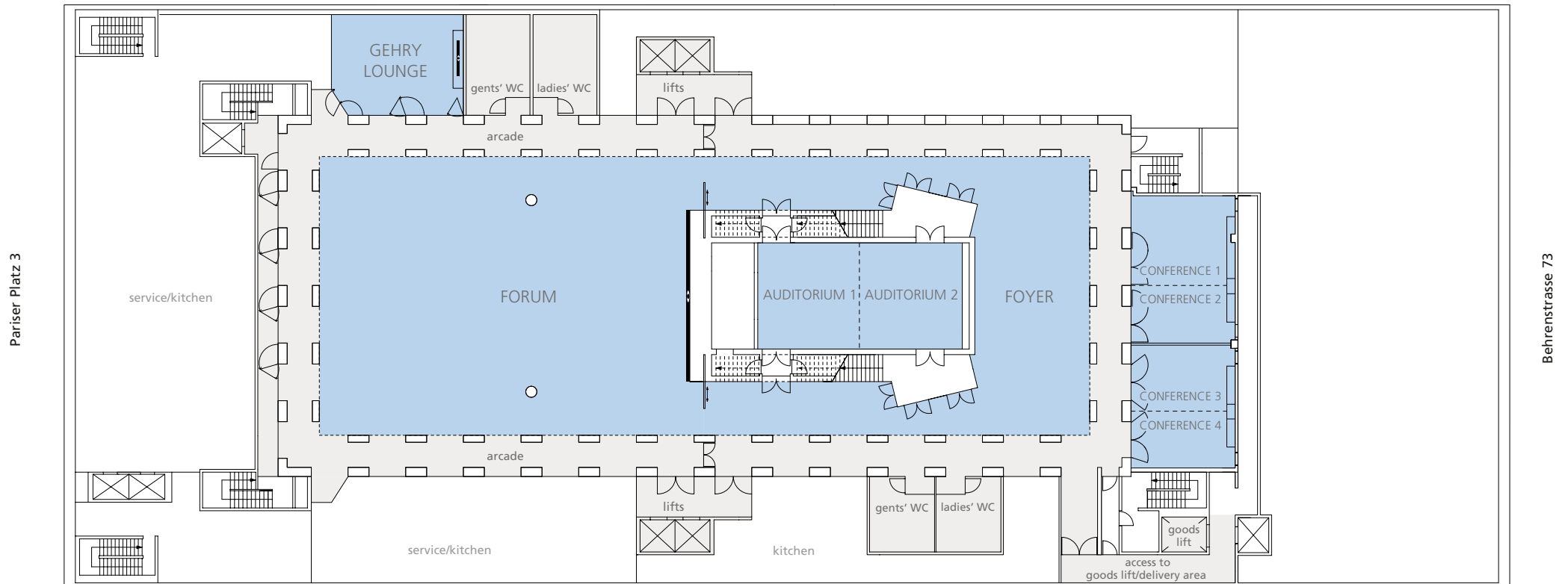




Lower Ground Floor

M 1:400

10 5 2,5 1 0,5



The Entrance Vestibule

Ground Floor



Event type

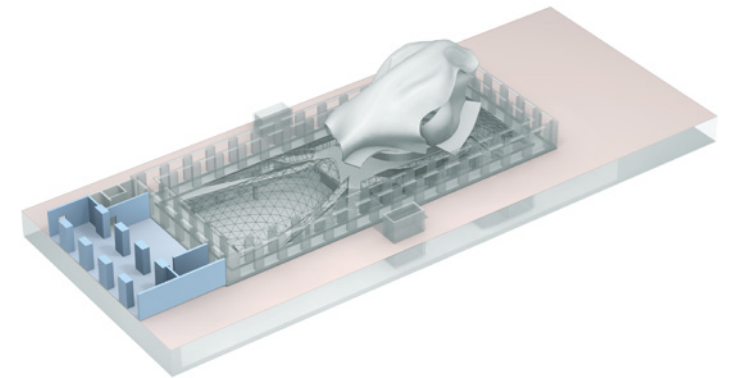
- » accreditation
- » cloakroom

Interior & Furnishing

- » Italian limestone façade
- » large steel glass doors
- » granite floor
- » access to Wi-Fi

Equipment & Service

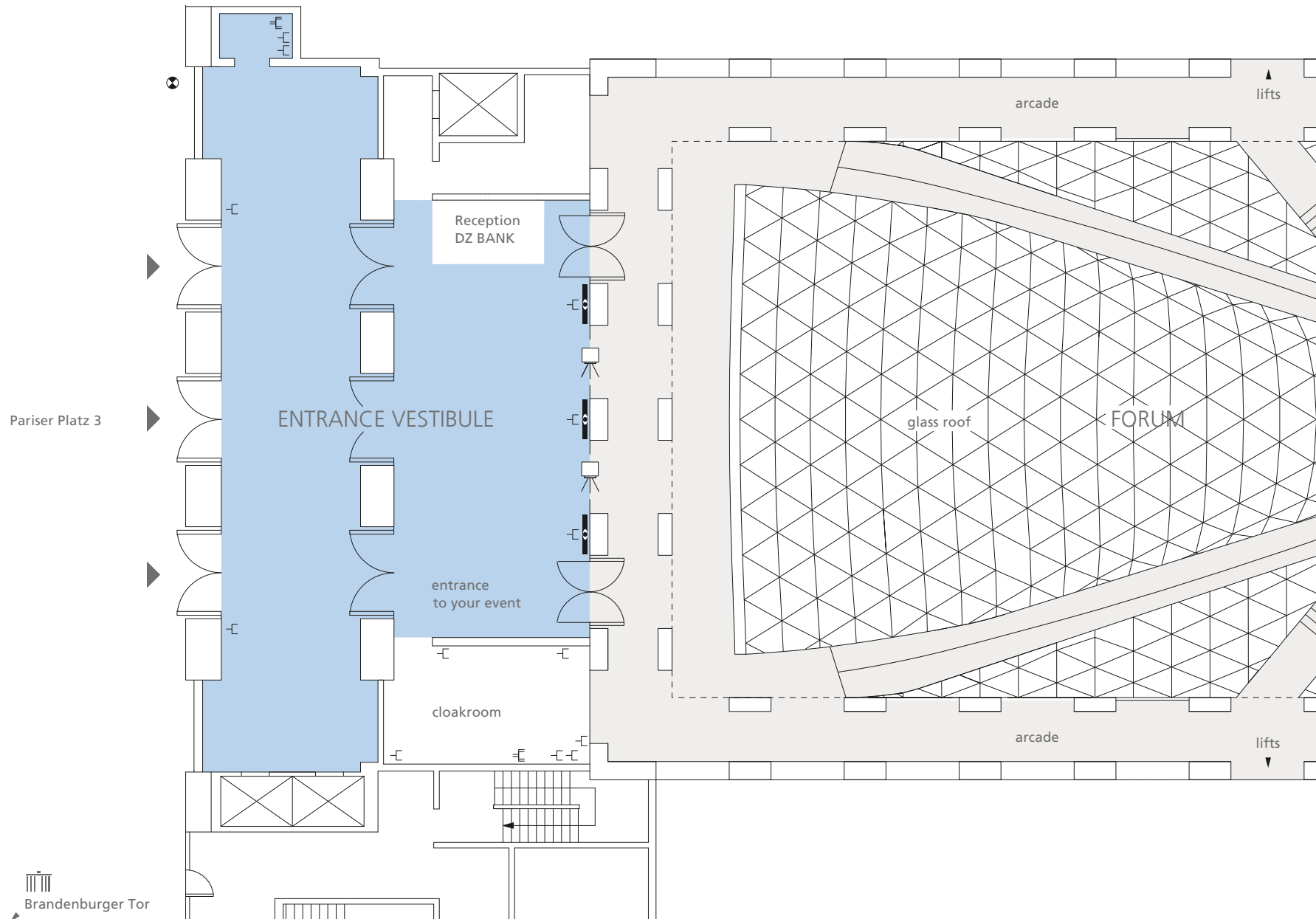
- » 3 LCD screens 55"
- » signage system
- » hostess and cloakroom service
- » in-house security
- » Wi-Fi





The Entrance Vestibule Ground Floor

M 1:200



| | |
|--|--|
| | TV and audio broadcasting system and floor cabling with data lines |
| | power point |
| | 3-phase power point |
| | LCD screen 55" |

The Plenum

Ground Floor



Event type

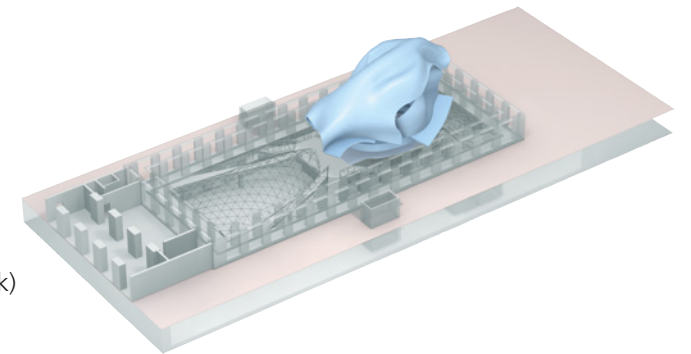
- » press conferences
- » workshops
- » meetings
- » lectures
- » plenary sessions
- » product presentations
- » podium discussions

Interior & Furnishing

- » optional podium area
- » variable speaker positioning
- » flexible seating on the parquet
- » boardroom table
- » flexible seating within the rows
- » sound-proofed wall panels
- » direct daylight

Technology & Equipment

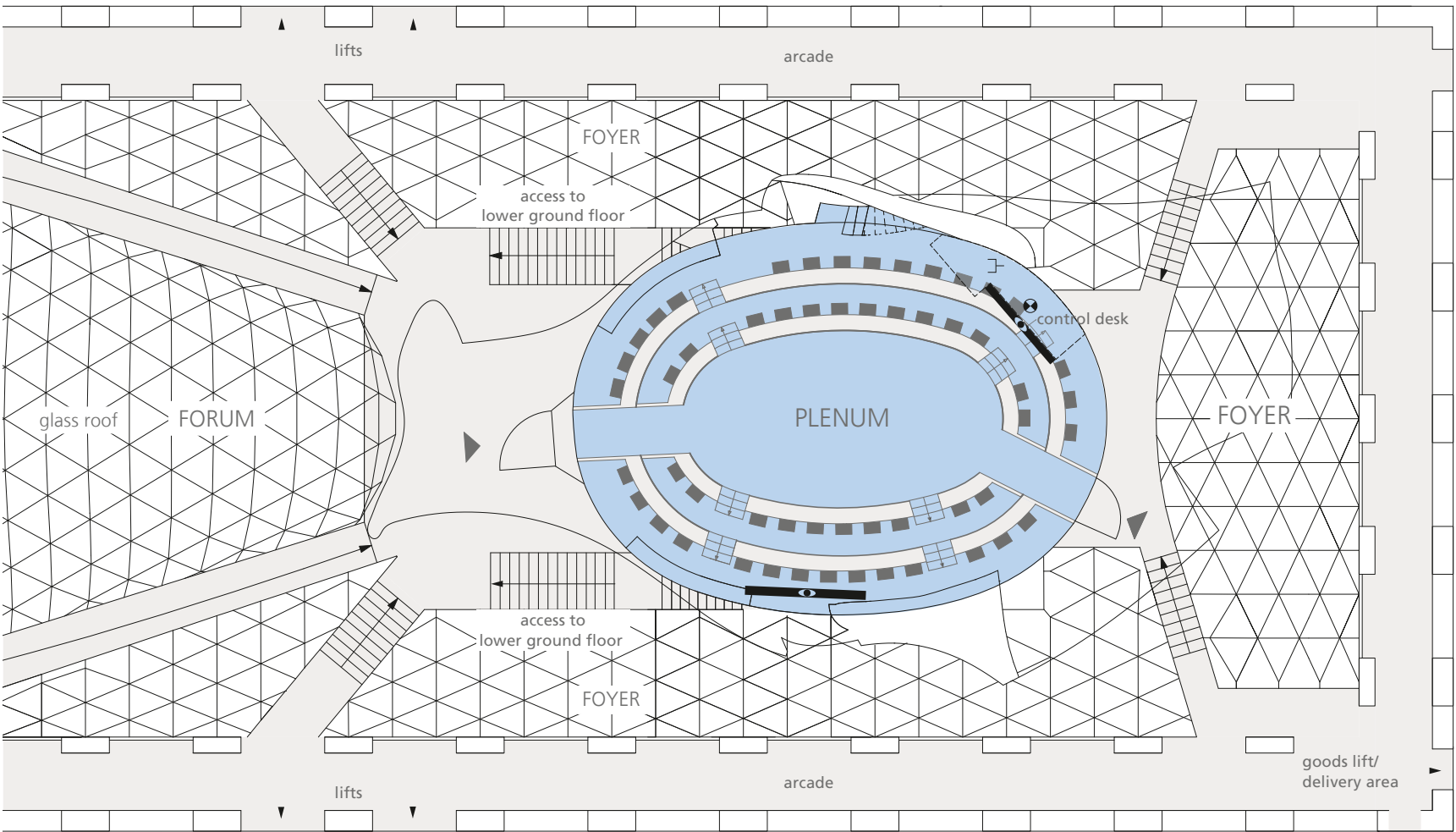
- » Sound system with electronic beam steering, 8 wireless microphone channels
- » Digital desktop intercom stations with voting function
- » Digital sound control, extensive video routing
- » display 110" & LED-Wall 135"
- » portable 40" preview monitors
- » extensive infrastructure (optical fibre, and network)
- » dedicated 100Mbit/s network cable connected
- » Wi-Fi






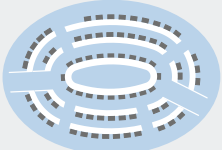
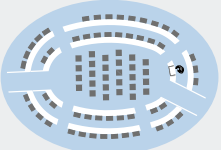
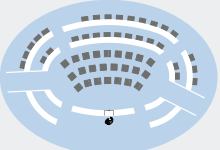


The Plenum Ground Floor

M 1:200



-  access channels to tv and audio transmission
-  power point
-  Display 110" LED-Wall 135"

| DIMENSIONS | | SEATING CAPACITY BOARDROOM | | THEATRE | | PODIUM | |
|------------|--------------------|---|---|--|---|---|---|
| Area | 188 m ² |  | maximum 74 delegates parquet 20 delegates seating rows 54 delegates |  | maximum 80 delegates parquet 28 delegates seating rows 52 delegates |  | maximum 54 delegates parquet 24 delegates seating rows 30 delegates |

The Forum

Lower Ground Floor



Event type

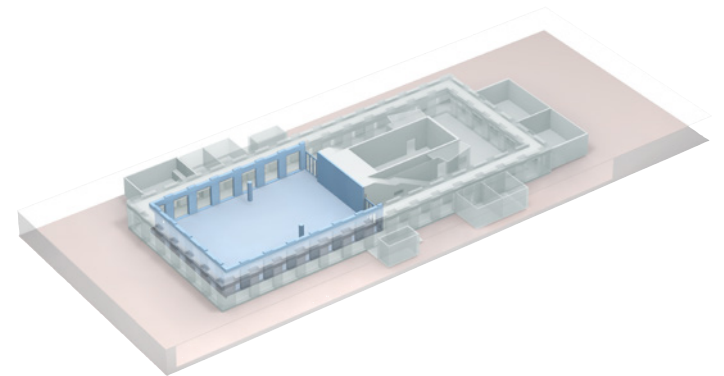
- » receptions
- » gala dinners
- » congresses
- » symposia
- » conferences
- » meetings
- » presentations
- » exhibitions
- » fashion shows
- » concerts

Interior & Furnishing

- » direct daylight, glass roof
- » red carpet
- » glass art installation
- » access to Foyer and Gehry Lounge
- » designer furniture

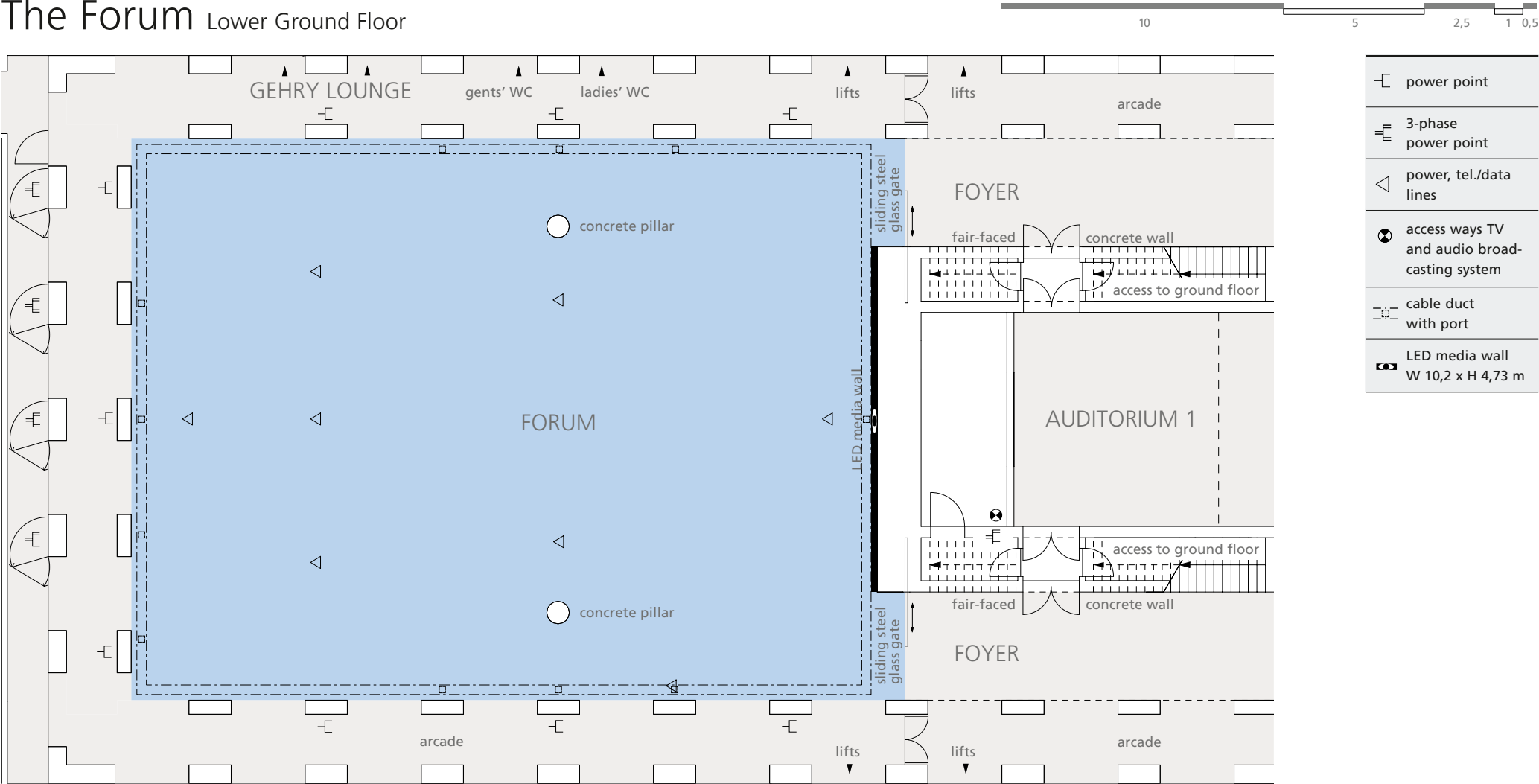
Technology & Equipment

- » LED media wall (W 10,20 m x H 4,73 m / resolution 5.770 px x 2.520 px)
- » PA system Kling & Freitag
- » technical cooperation with event production experts
- » dimmable lighting
- » TV frequency links
- » invisible cable duct integrated in the floor
- » power points
- » Wi-Fi





The Forum Lower Ground Floor



| DIMENSIONS | |
|------------|-----------------|
| total area | 530 m² |
| length | 26,50 m |
| width | 20,00 m |
| height | 3,32 m – 5,58 m |

| SEATING CAPACITY | | including podium (10 x 3 m) | |
|------------------|--|-----------------------------|---------------|
| classroom | | 250 delegates | 250 delegates |
| theatre | | 500 delegates | 500 delegates |
| banquet | | 350 delegates | 320 delegates |
| reception | | 500 delegates | 500 delegates |

The Foyer

Lower Ground Floor



Event type

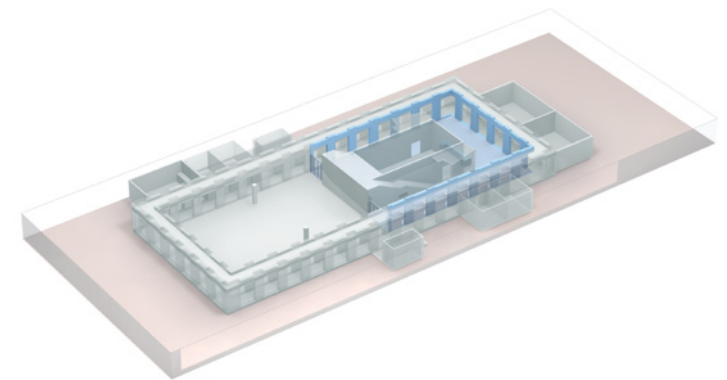
- » receptions
- » coffee breaks
- » exhibitions & product presentations
- » cocktail bar & lounge
- » dinner & meetings

Interior & Furnishing

- » direct daylight
- » red carpet
- » arcade
- » access to all spaces in the basement
- » flexible beverage bar

Technology & Equipment

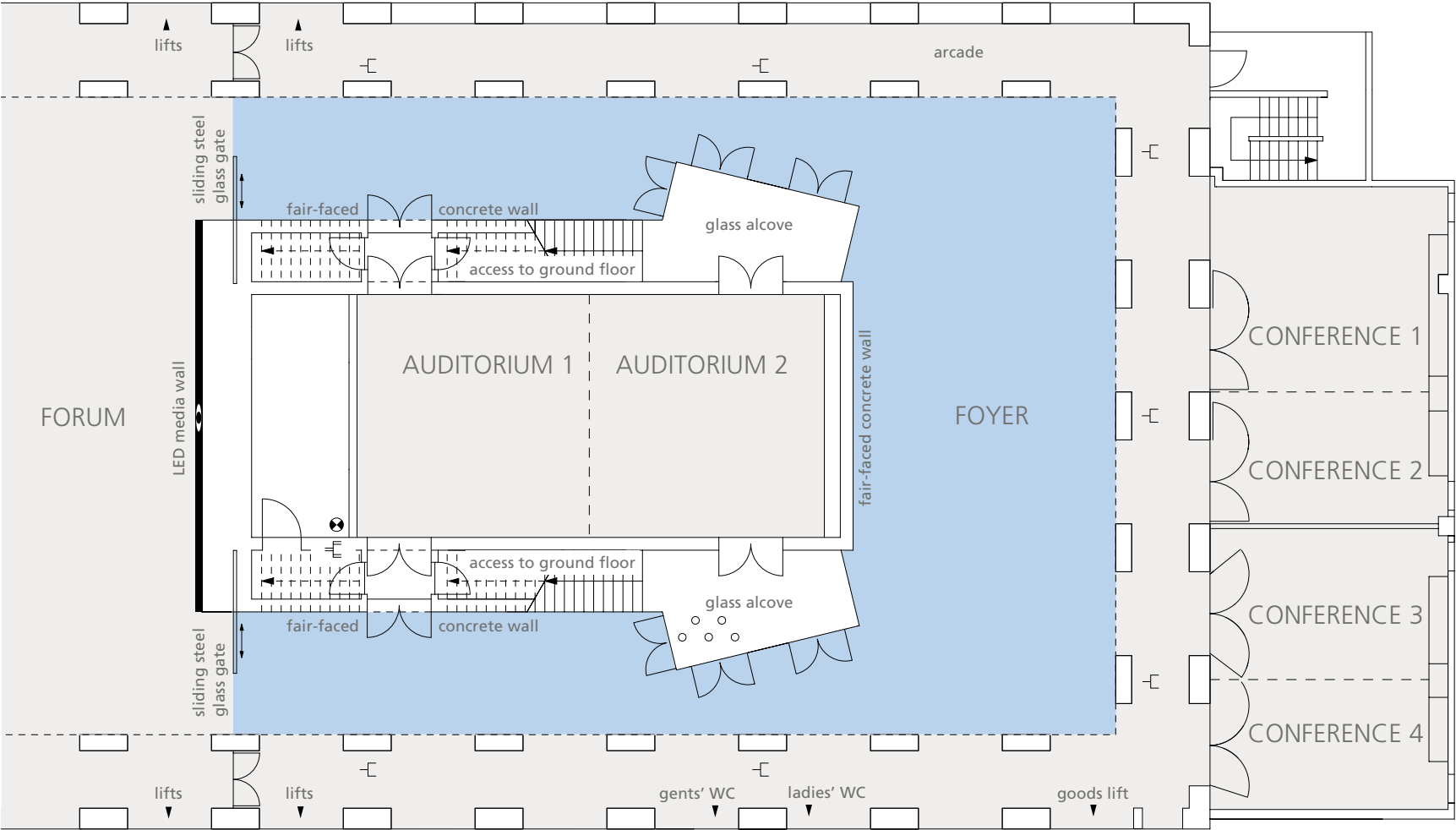
- » PA system Kling & Freitag
- » Dimmable lighting
- » Wi-Fi





The Foyer Lower Ground Floor

M 1:200



| | |
|--|--|
| | power point |
| | 3-phase power point |
| | access ways TV and audio broadcasting system |

| DIMENSIONS | | SEATING CAPACITY | | | |
|------------|--------|------------------|----------------------------|---------|--------------|
| total area | 200 m² | reception/buffet | 250 delegates | banquet | 80 delegates |
| | | exhibition | depends on exhibition size | theater | 84 delegates |

The Gehry Lounge

Lower Ground Floor



Event type

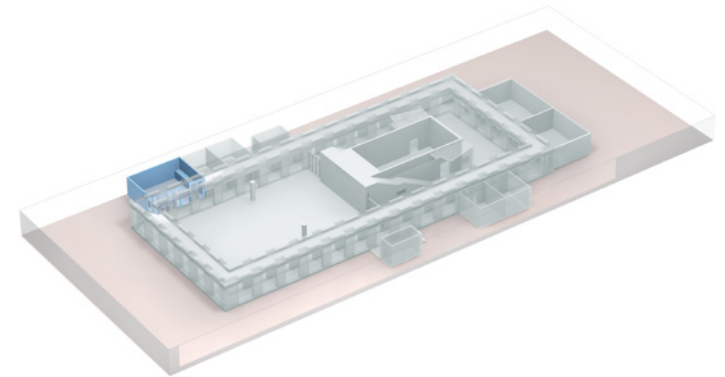
- » cocktail bar & lounge
- » receptions
- » workshops
- » meetings
- » VIP lounge

Interior & Furnishing

- » parquet floor
- » concealable pantry kitchen
- » installed beverage station

Technology & Equipment

- » power connections 220 + 380 V
- » LED screen 75"
- » technical cooperation with event production experts
- » Wi-Fi





The Gehry Lounge

Lower Ground Floor

M 1:200

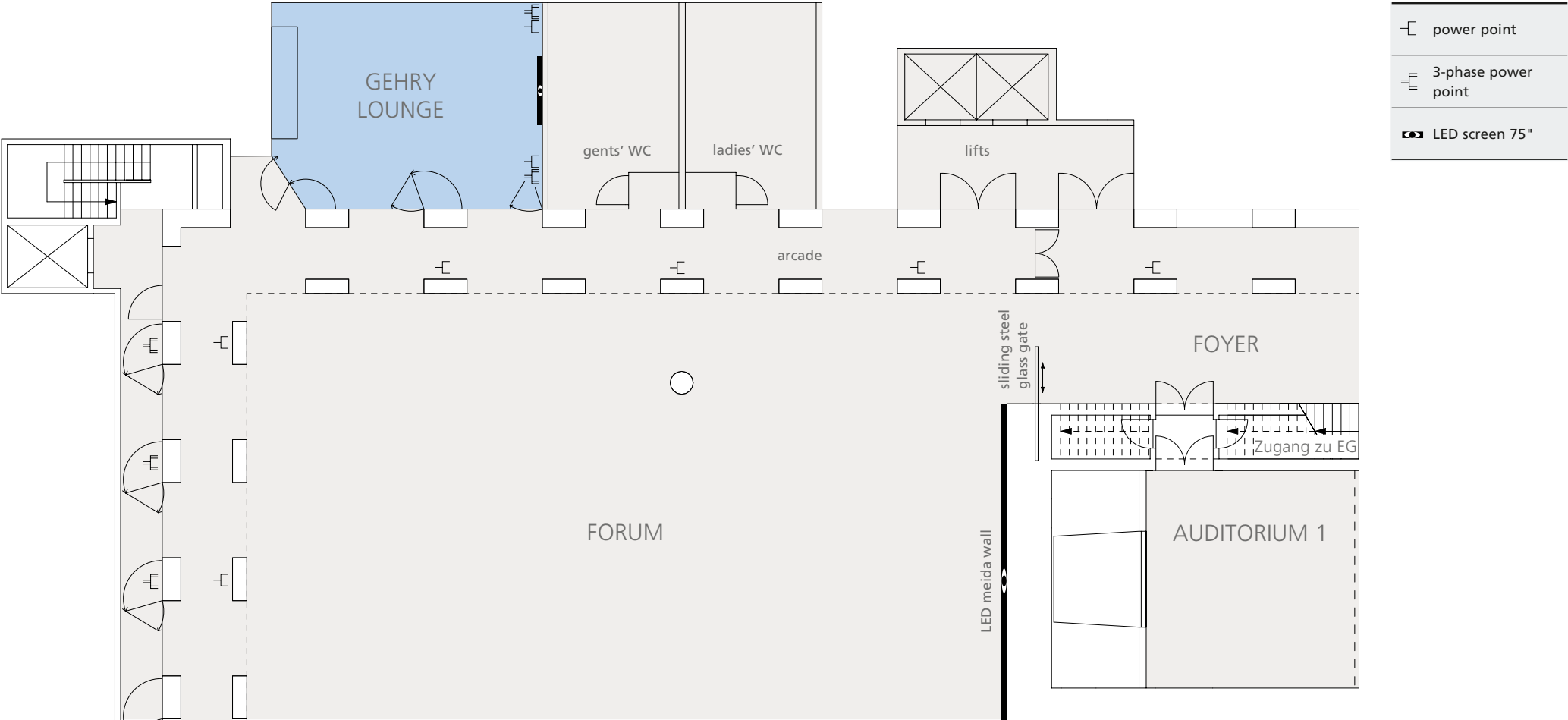
10




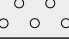
5

2,5

1

0,5



| DIMENSIONS | | SEATING CAPACITY | |
|------------|--------|------------------|--|
| total area | 70 m² | length |  20 delegates |
| length | 9,20 m | theatre |  50 delegates |
| width | 7,10 m | banquet |  36 delegates |
| height | 4,50 m | reception |  50 delegates |

The Auditorium

Lower Ground Floor



Event type

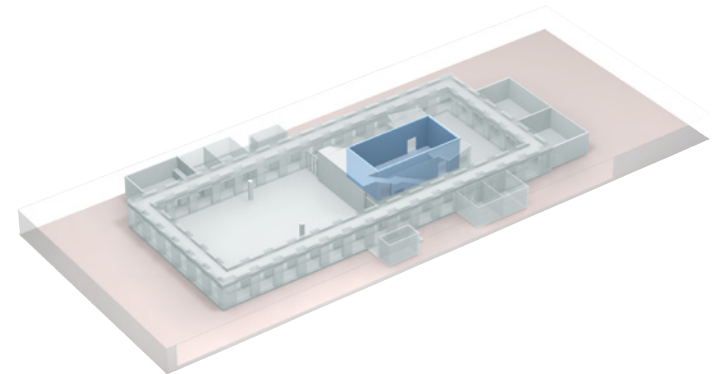
- » workshops
- » meetings
- » exhibitions & product presentations
- » additional service area
- » press conferences
- » lectures

Interior & Furnishing

- » flexible room concept; can be divided into two separate areas
- » indirect lighting
- » under-floor air-conditioning
- » red carpet

Technology & Equipment

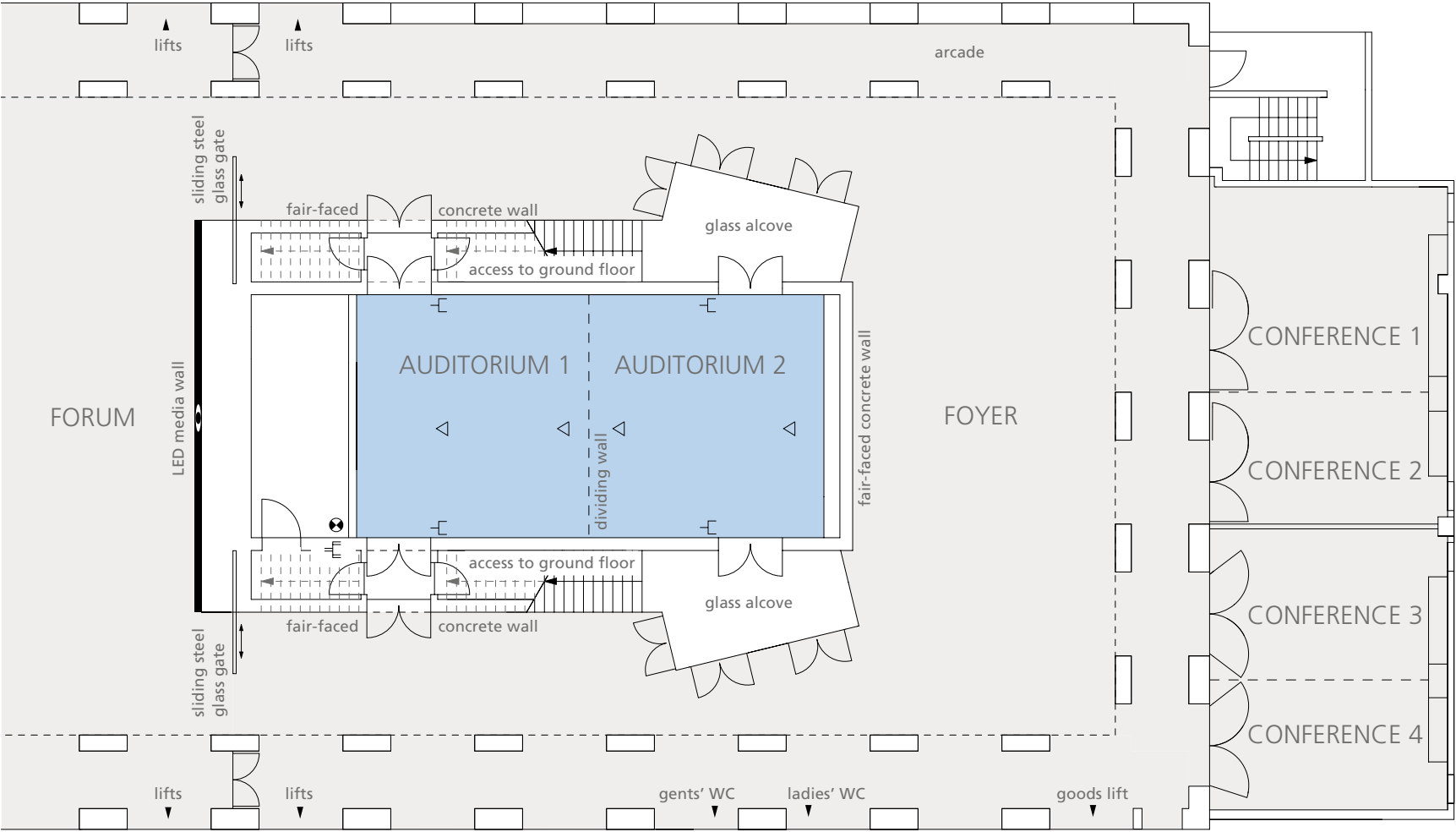
- » technical cooperation with event production experts
- » Dimmable lighting
- » Wi-Fi





The Auditorium Lower Ground Floor

M 1:200



| | |
|--|--|
| | power point |
| | 3-phase power point |
| | power, tel./data lines |
| | access ways TV and audio broadcasting system |

| DIMENSIONS | Auditorium 1 & 2 | Auditorium 1 | Auditorium 2 |
|------------|------------------|--------------|--------------|
| total area | 107,38 m² | 53,36 m² | 53,28 m² |
| length | 14,55 m | 7,22 m | 7,20 m |
| width | 7,38 m | 7,38 m | 7,38 m |
| height | 4,55 m | 4,55 m | 4,55 m |

| SEATING CAPACITY | Auditorium 1 & 2 | Auditorium 1 | Auditorium 2 |
|------------------|------------------|--------------|--------------|
| classroom | 60 delegates | 20 delegates | 20 delegates |
| boardroom | 30 delegates | 16 delegates | 16 delegates |
| theatre | 100 delegates | 35 delegates | 35 delegates |
| U-shape | 30 delegates | 12 delegates | 12 delegates |

The Conferences

Lower Ground Floor



Event type

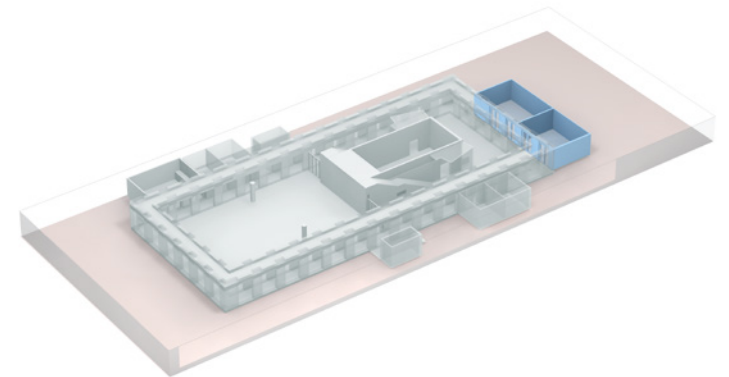
- » conferences
- » workshops
- » presentations
- » lounge
- » exhibitions
- » additional service area

Interior & Furnishing

- » indirect daylight
- » flexible room concept;
partition walls
- » red carpet
- » installed beverage station

Technology & Equipment

- » TV frequency links
- » Wi-Fi

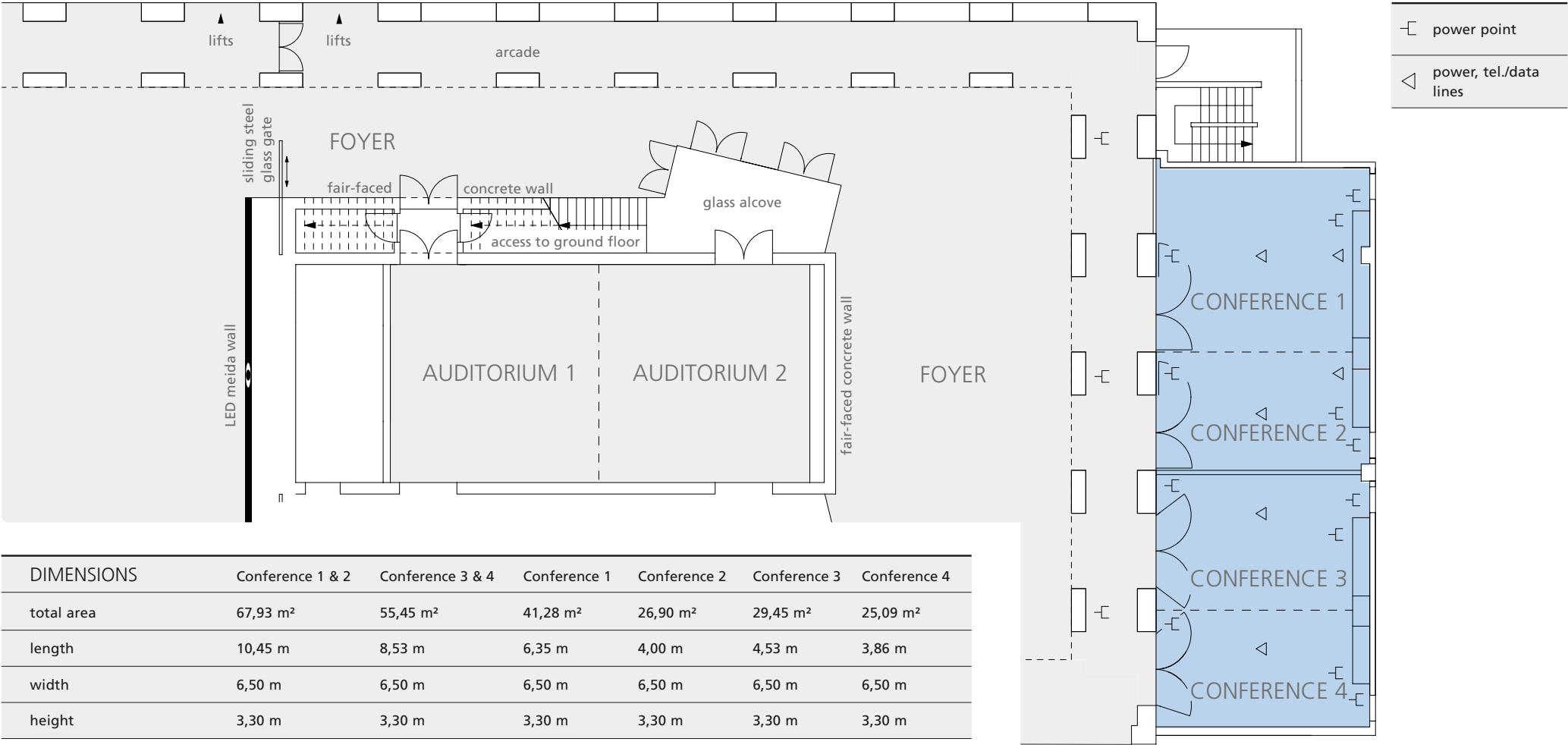







The Conferences

Lower Ground Floor

M 1:200



| DIMENSIONS | Conference 1 & 2 | Conference 3 & 4 | Conference 1 | Conference 2 | Conference 3 | Conference 4 |
|------------|------------------|------------------|--------------|--------------|--------------|--------------|
| total area | 67,93 m² | 55,45 m² | 41,28 m² | 26,90 m² | 29,45 m² | 25,09 m² |
| length | 10,45 m | 8,53 m | 6,35 m | 4,00 m | 4,53 m | 3,86 m |
| width | 6,50 m | 6,50 m | 6,50 m | 6,50 m | 6,50 m | 6,50 m |
| height | 3,30 m | 3,30 m | 3,30 m | 3,30 m | 3,30 m | 3,30 m |

| SEATING CAPACITY | Conference 1 & 2 | Conference 3 & 4 | Conference 1 | Conference 2 | Conference 3 | Conference 4 |
|---|------------------|------------------|--------------|--------------|--------------|--------------|
| classroom  | 30 delegates | 24 delegates | – | – | – | – |
| boardroom  | 25 delegates | 20 delegates | 12 delegates | 10 delegates | 10 delegates | 10 delegates |
| theatre  | 55 delegates | 40 delegates | – | – | – | – |

The Gallery with Boardroom and Quadriga room

First Floor



Boardroom



Gallery



Quadriga

The Gallery

Event Type

- » receptions

Interior & Furnishing

- » direct daylight
- » view to the Brandenburg Gate
- » opens to the atrium

Technology & Equipment

- » 220V power connections
- » Wi-Fi

Boardroom and Quadriga room

Event Type

- » conferences
- » presentations
- » Banquet
- » film set

Interior & Furnishing

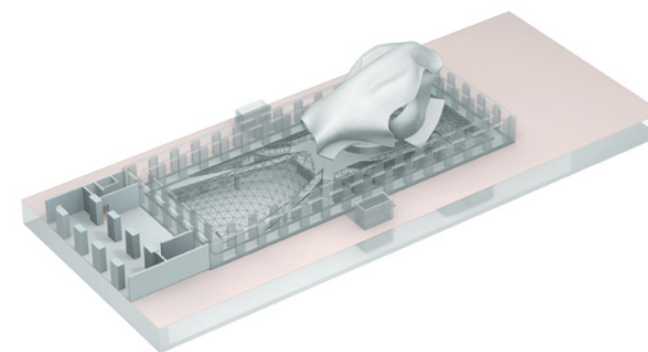
- » direct daylight
- » view to the Brandenburg Gate
- » accessible balconies facing Pariser Platz

Technology & Equipment

- » 220V power connections
- » technical cooperation with event production experts
- » Wi-Fi

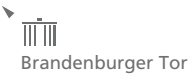
Room Quadriga

- » Permanently installed beverage station
- » 85" monitor with 4 HDMI connections & Airplay
- optionally expandable with microphone units and conference camera

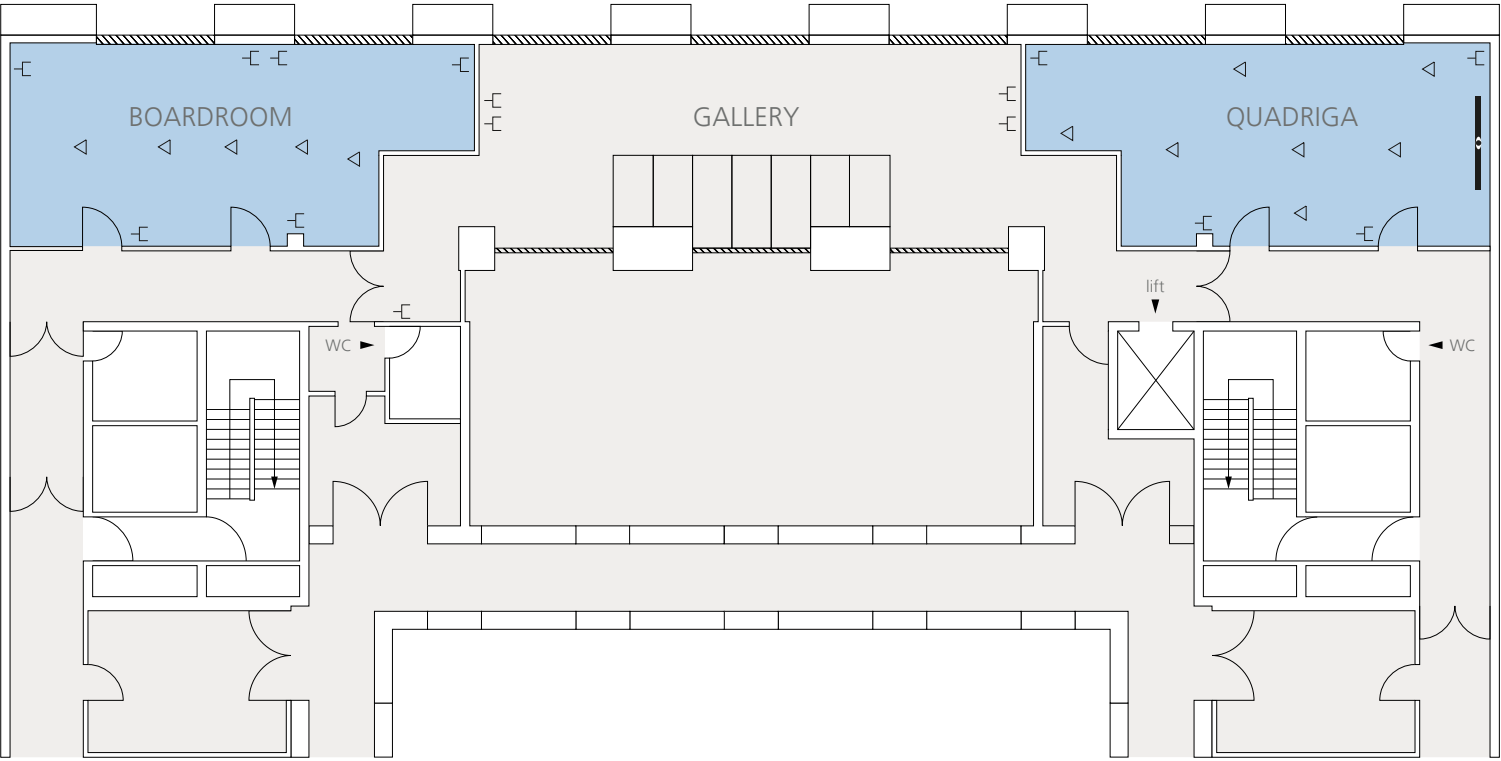




The Gallery with Boardroom and Quadriga room | First Floor



Pariser Platz



power point

power, tel./data lines

LCD screen 85"

| DIMENSIONS | Gallery | Quadriga | Boardroom |
|------------|---------|-----------------|-----------------|
| total area | 75 m² | 65 m² | 65 m² |
| length | 15 m | 12,85 - 10,20 m | 12,85 - 10,20 m |
| width | 5 m | 5,10 m | 5,10 m |
| height | 2,80 m | 2,80 m | 2,80 m |

| SEATING CAPACITY | Gallery | Quadriga | Boardroom |
|------------------|--------------|--------------|--------------|
| boardroom | - | 26 delegates | 26 delegates |
| theatre | - | 45 delegates | 45 delegates |
| banquet | - | 36 delegates | 36 delegates |
| reception | 60 delegates | 40 delegates | 40 delegates |

The Conferences 5 to 8

First Floor



Event type

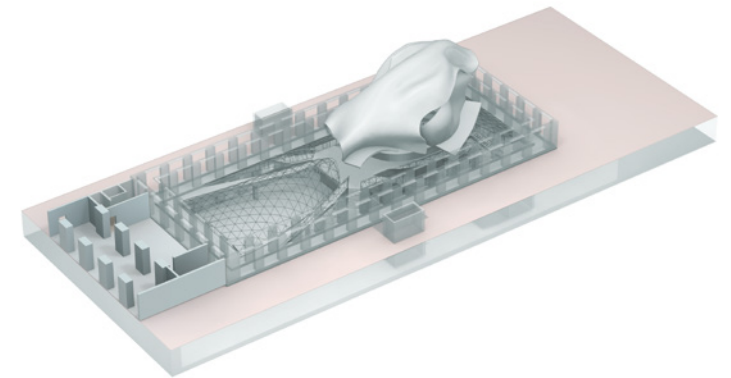
- » workshops
- » presentations
- » conferences
- » Lounge

Interior & Furnishing

- » indirect daylight
- » partition wall
- » carpet
- » Creative workshop furniture available
- » Conferences 5 & 6 with flexible room concept

Technology & Equipment

- » flexible monitor positions
- » Wi-Fi

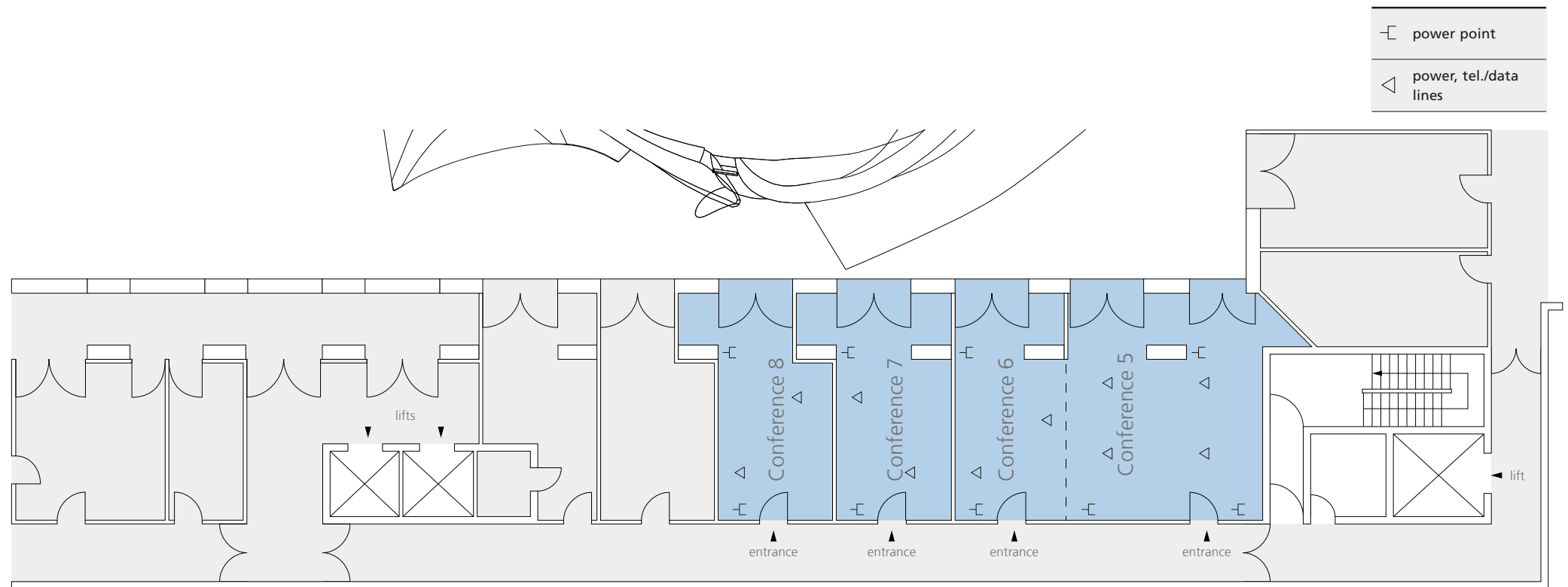








The Conferences 5 to 8 First Floor

M 1:200

10 5 2,5 1 0,5



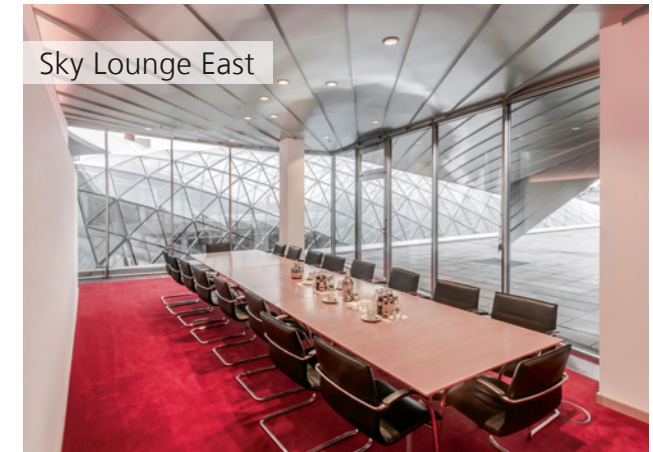
| DIMENSIONS | Conference 5 | Conference 6 | Conference 5 & 6 | Conference 7 | Conference 8 |
|------------|-------------------|-------------------|-------------------|-------------------|-------------------|
| total area | 53 m ² | 33 m ² | 86 m ² | 32 m ² | 32 m ² |
| length | 6,75 m | 4 m | 10,85 m | 4 m | 4 m |
| width | 5,50 m | 5,50 m | 5,50 m | 5,50 m | 5,50 m |
| height | 2,80 m | 2,80 m | 2,80 m | 2,80 m | 2,80 m |

| SEATING CAPACITY | Conference 5 | Conference 6 | Conference 5 & 6 | Conference 7 | Conference 8 |
|---|-----------------|--------------|------------------|--------------|--------------|
| boardroom  | 18 delegates | 12 delegates | 30 delegates | 12 delegates | 12 delegates |
| theatre  | 35 delegates | 20 delegates | 70 delegates | 20 delegates | 20 delegates |
| U-shape  | 14-16 delegates | - | 24 delegates | - | - |
| classroom  | 20 delegates | - | 28 delegates | - | - |

The Sky Lobby

with Sky Lounge West & East

Top Floor



Event type

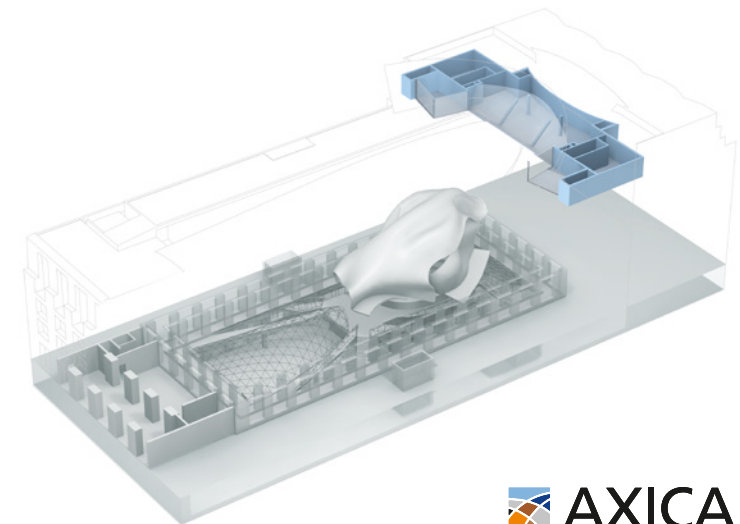
- » receptions
- » Banquet
- » workshops
- » exhibitions
- » presentations
- » conferences
- » film set

Interior & Furnishing

- » open, expansive atmosphere on the 6th floor
- » direct daylight, glass front
- » view of the building's Atrium and the rooftops of Berlin
- » at eye-level with the Quadriga on the Brandenburg Gate and the dome of the Reichstag building
- » separate cloakroom and toilets

Technology & Equipment

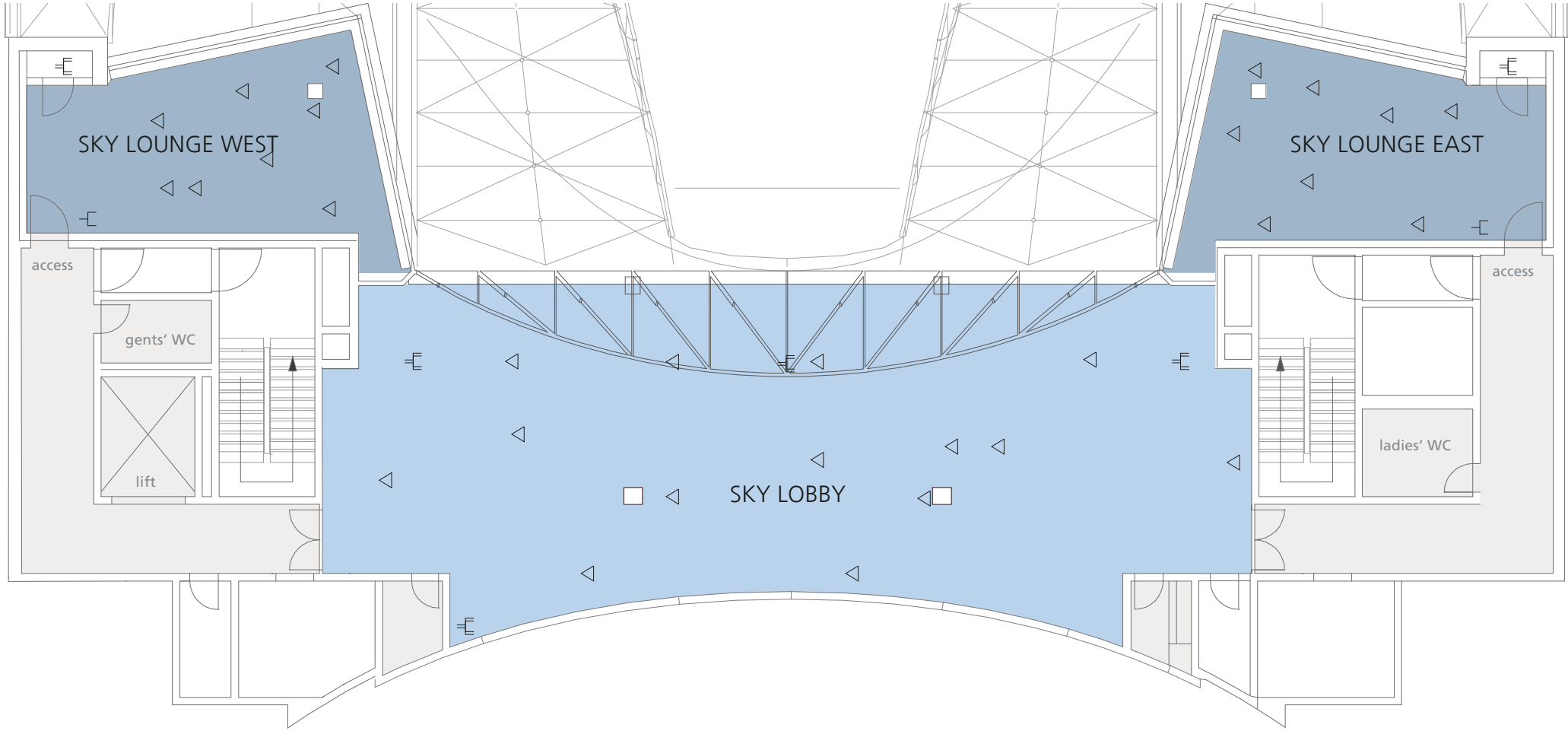
- » coloured interior lighting
- » power connections 220 + 380 V
- » technical cooperation with event production experts
- » WiFi





The Sky Lobby With Sky Lounge West & East | Top Floor

M 1:100



| DIMENSIONS SKY LOBBY | |
|----------------------|--------------------|
| total area | 204 m ² |
| length | 24,80 m |
| width | 8,14 - 9,65 m |
| height | 4,35 - 5,59 m |

| SEATING CAPACITY SKY LOBBY | | |
|----------------------------|--|--------------|
| classroom | | 40 delegates |
| theatre | | 80 delegates |
| banquet | | 50 delegates |
| reception | | 80 delegates |

| DIMENSIONS SKY LOUNGE | |
|-----------------------|-------------------|
| total area | 46 m ² |
| length | 9,00 - 10,00 m |
| width | 4,00 - 5,80 m |
| height | 3,00 m |

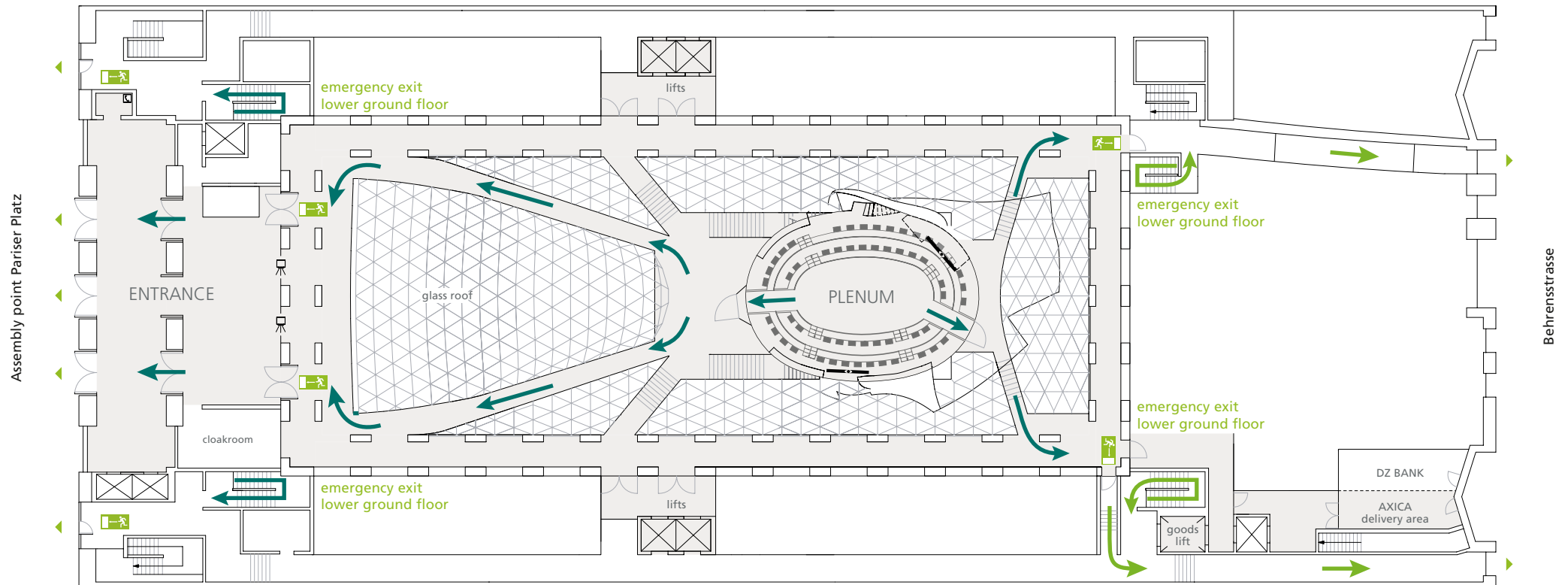
| CAPACITY SKY LOUNGE | | |
|---------------------|--|--------------|
| boardroom | | 18 delegates |
| theatre | | 25 delegates |
| banquet | | 12 delegates |
| reception | | 20 delegates |

| | |
|--|------------------------|
| | 3-phase power point |
| | power, tel./data lines |



Evacuation Plan

Ground Floor

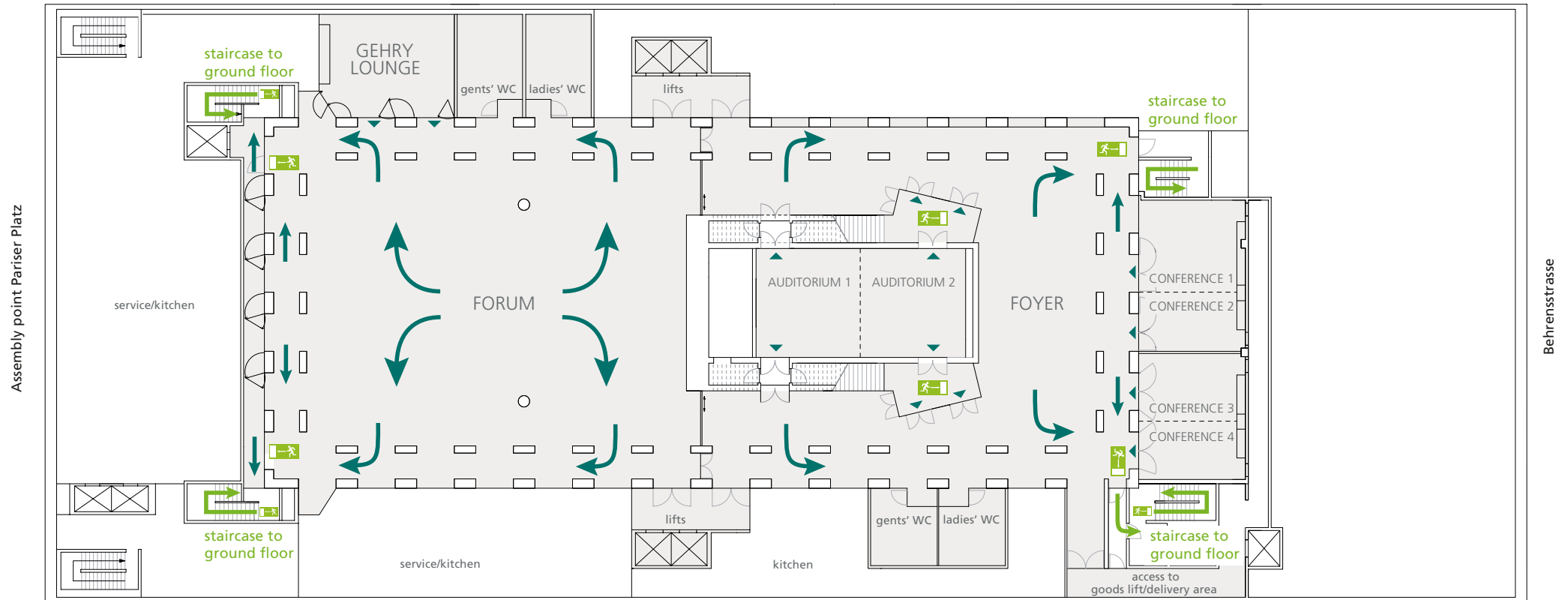


IN CASE OF EMERGENCY

- » Please remain calm.
- » Please evacuate the building via the designated emergency exits.
- » Pay attention to announcements.
- » Do not use lifts.
- » Proceed to the assembly point at Pariser Platz.
- » Await further instructions.

Evacuation Plan

Lower Ground Floor



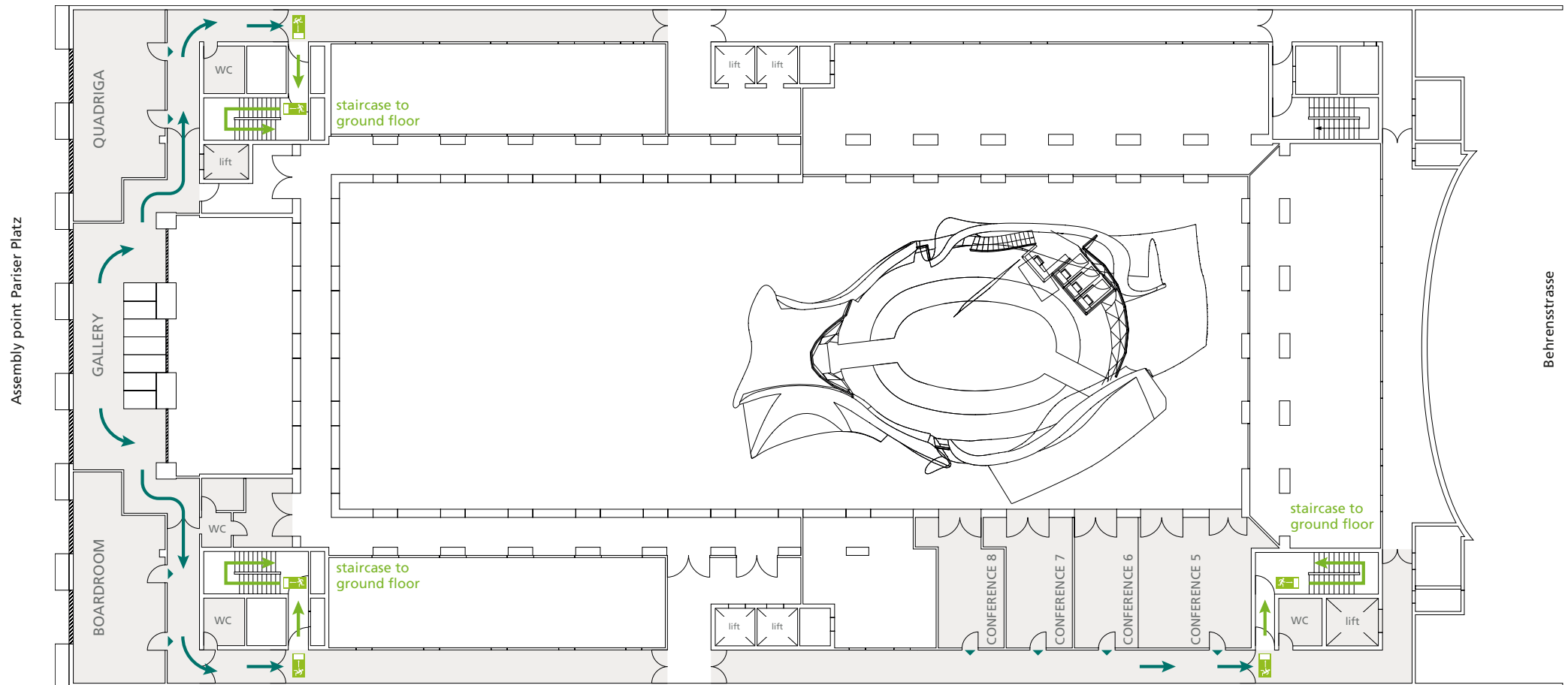
IN CASE OF EMERGENCY

- » Please remain calm.
- » Please evacuate the building via the designated emergency exits.
- » Pay attention to announcements.
- » Do not use lifts.
- » Proceed to the assembly point at Pariser Platz.
- » Await further instructions.



Evacuation Plan

First Floor

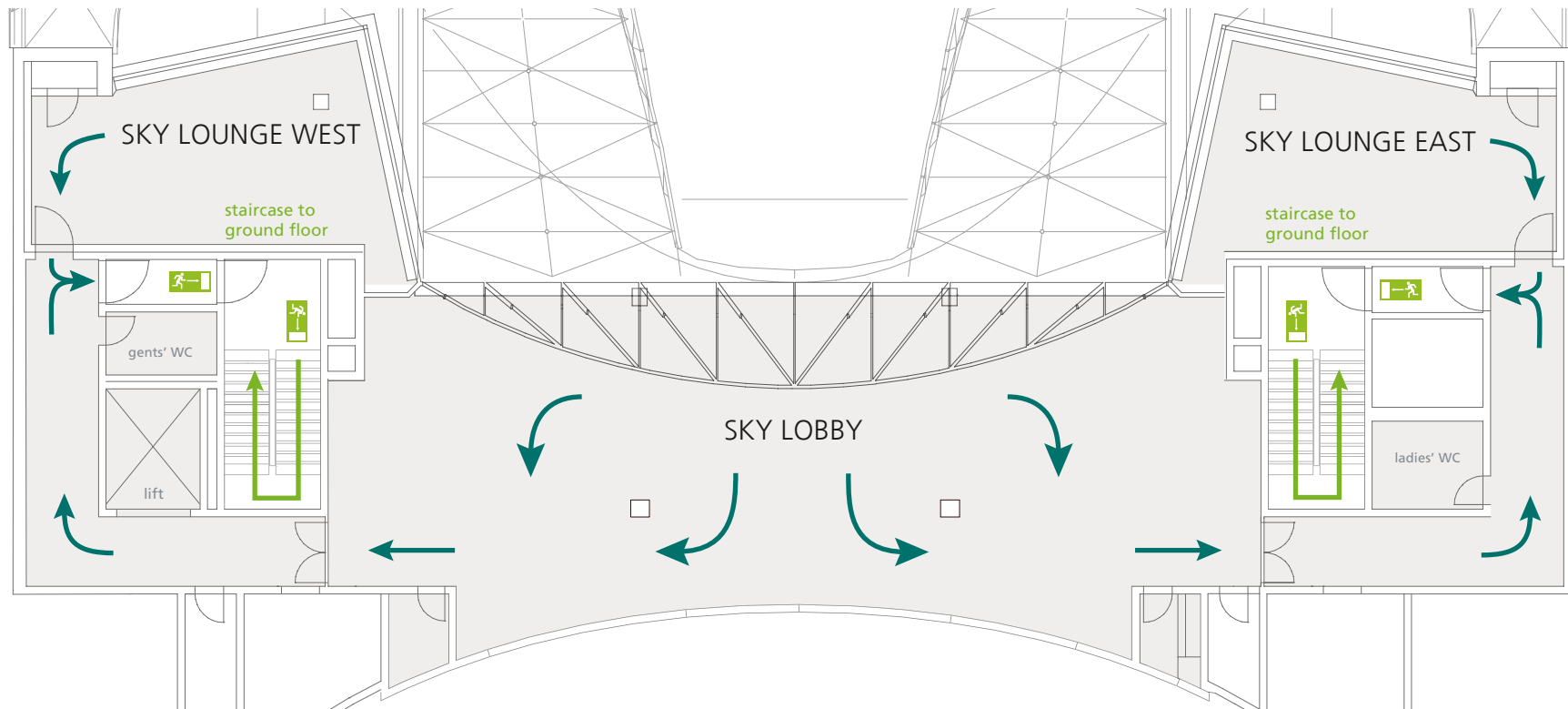


IN CASE OF EMERGENCY

- » Please remain calm.
- » Please evacuate the building via the designated emergency exits.
- » Pay attention to announcements.
- » Do not use lifts.
- » Proceed to the assembly point at Pariser Platz.
- » Await further instructions.

Evacuation Plan

Sky Lobby



IN CASE OF EMERGENCY

- » Please remain calm.
- » Please evacuate the building via the designated emergency exits.
- » Pay attention to announcements.
- » Do not use lifts.
- » Proceed to the assembly point at Pariser Platz.
- » Await further instructions.