

TON
— 1

A place for creators,
originators and change
makers to thrive.

ATELIER
GARDENS



TON 1

[SOIL]

TON 2

Ton-1 has been transformed from a film studio into a unique and multi-functional event space, like no other.



700 sq m of beautifully adaptable event space at Atelier Gardens in Berlin.

Up to 1,000 person capacity and offering best-in-class conference, screening and audio technology.

With access to pioneering garden spaces and site amenities including workspaces, organic catering facilities and a bar, all embedded in an inspirational community.



**Ton-1 welcomes
all kinds of
reflective,
educational
or celebratory
activities,
for groups of all
shapes and sizes.**

Designed by architects MVRDV, this conscientious restoration of a monument-protected building forms part of the Atelier Gardens campus – a forward-thinking and revolutionary place where facilitating societal change is the core mission.

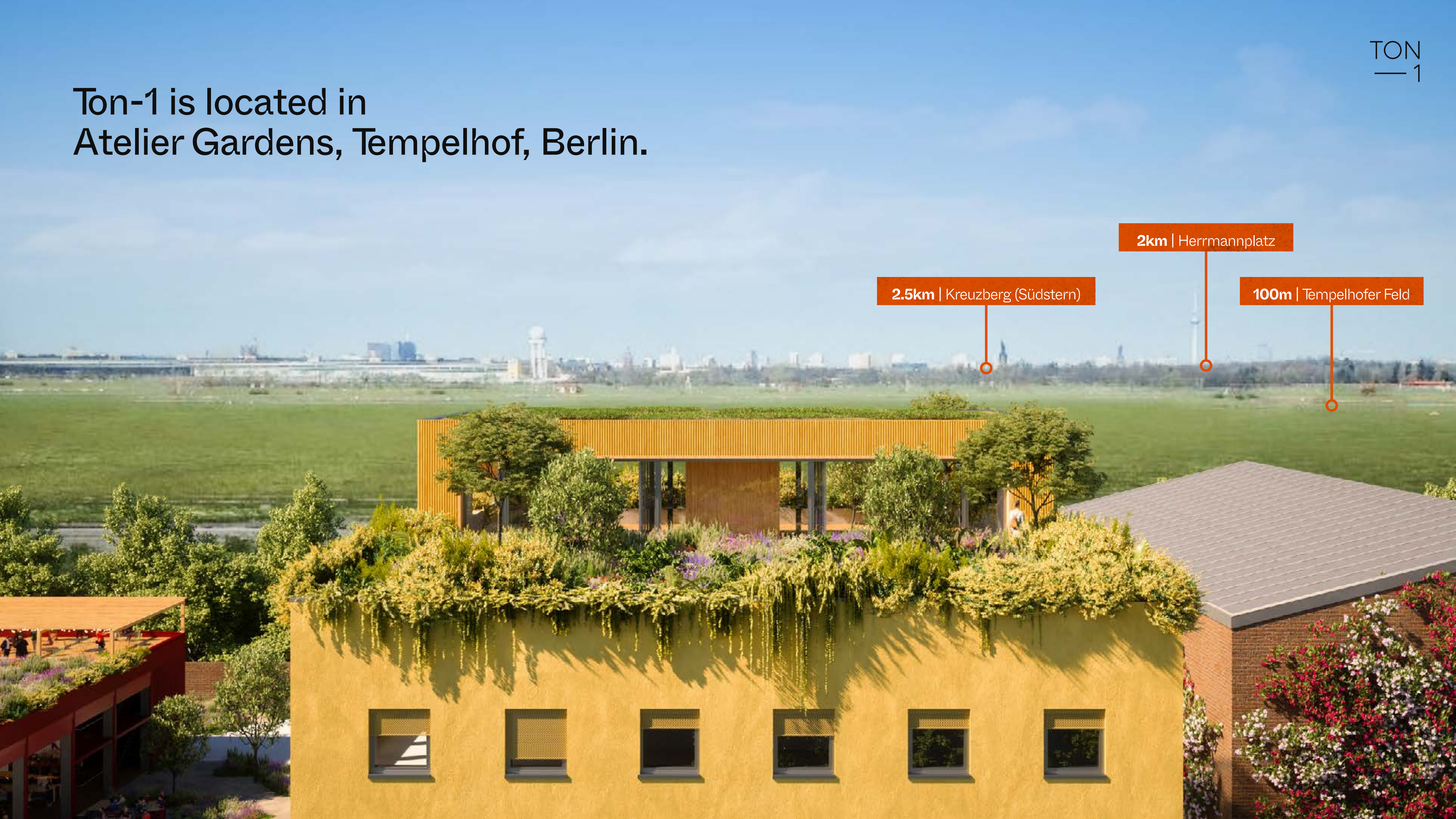
While the beautiful red-brick film studios have been the perfect place for creativity and storytelling for more than 100 years, Ton-1 has been transformed to accommodate events of the future.



ATELIER GARDENS



Ton-1 is located in
Atelier Gardens, Tempelhof, Berlin.



2.5km | Kreuzberg (Südstern)

2km | Herrmannplatz

100m | Tempelhofer Feld



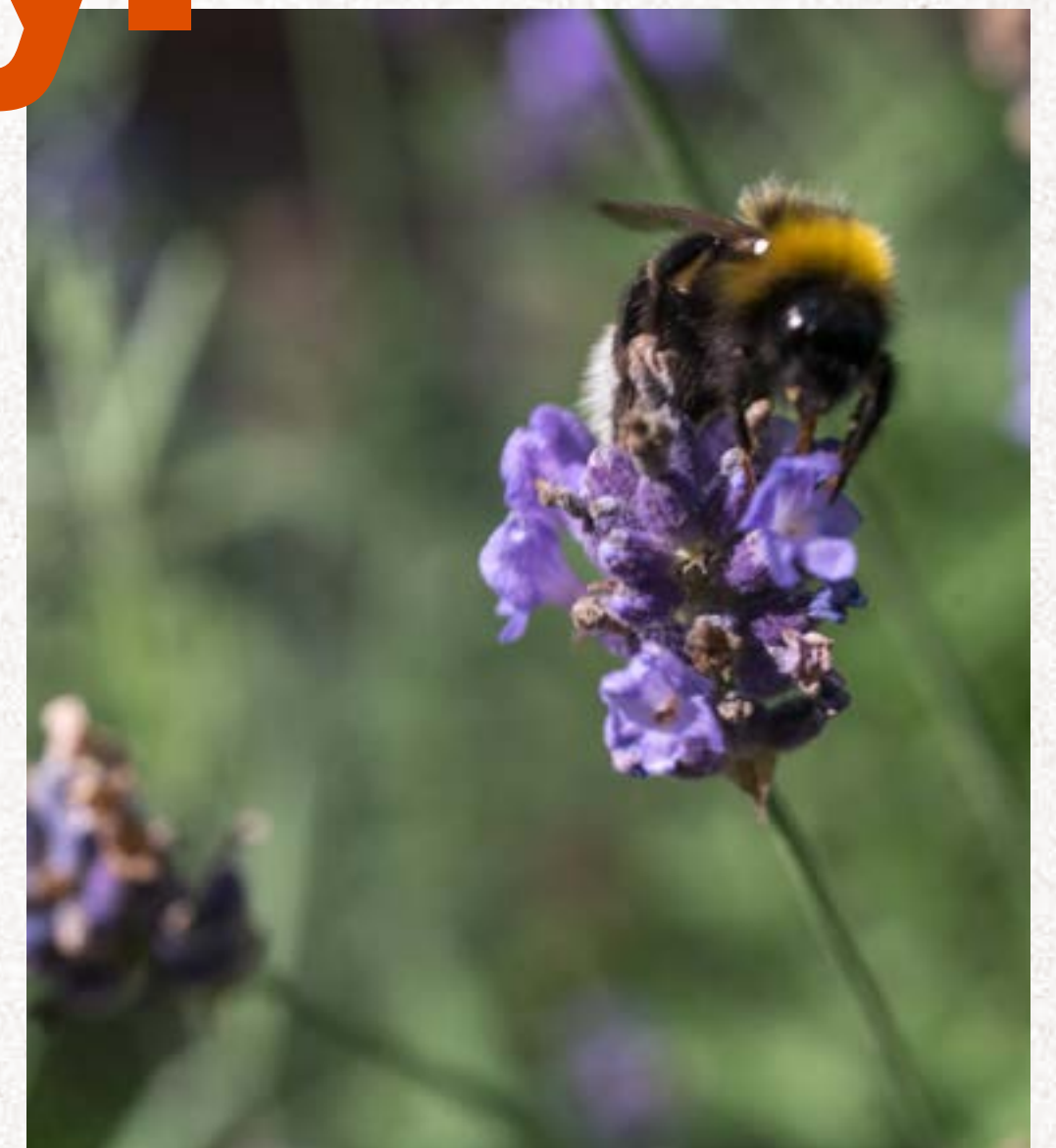
A future society.



Atelier Gardens is the global home for the pioneers of profound societal change.

The 23,800 sq m site is being adapted to reuse existing film studio structures and ecologically transform the landscape, revolutionising the future of farming, food, finance, film, leadership and education.

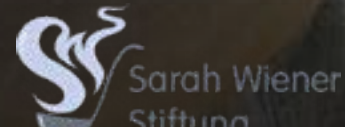
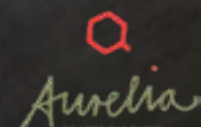
Our spaces are flexible, beautiful, brimming with nature and facilitate the work of the dynamic individuals and inspiring organisations that inhabit them.



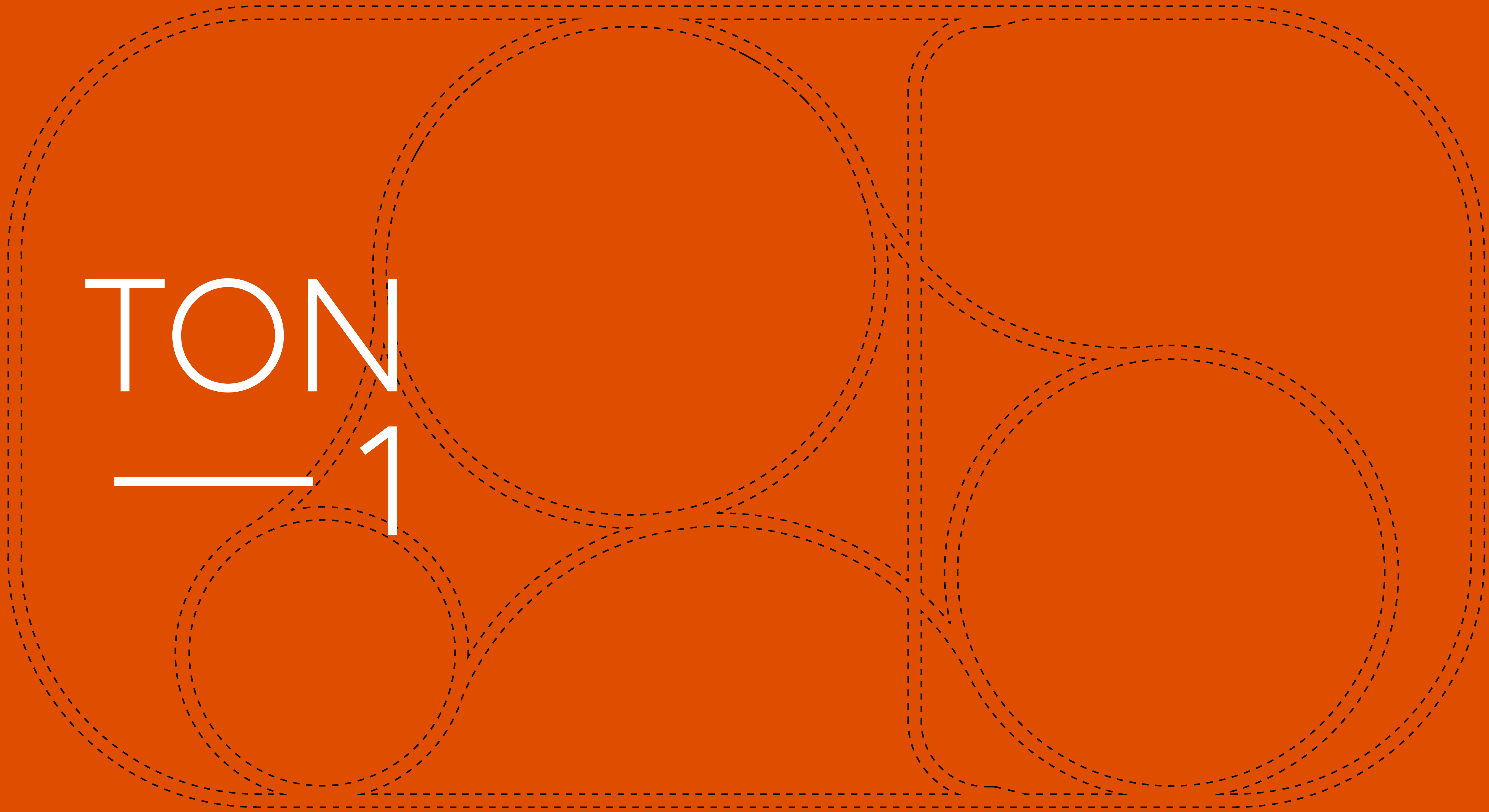
KAOSPILOT



The Peng! Collective



TON
1



Ton-1 is a considered, sustainable space that fulfils multiple purposes. Go configure.

The unique curtain rail system allows users to configure the space as needed.

The central skylights provide natural daylight and are equipped with full blackout blinds, which combined with the high-specification lighting and audio system, allows for a broad spectrum of environments and atmospheres to be created, at any time of day.



Ton-1 is designed to be as flexible as possible.

 **700 sq m**

The studio has been sustainably repurposed to a best-in-class specification.

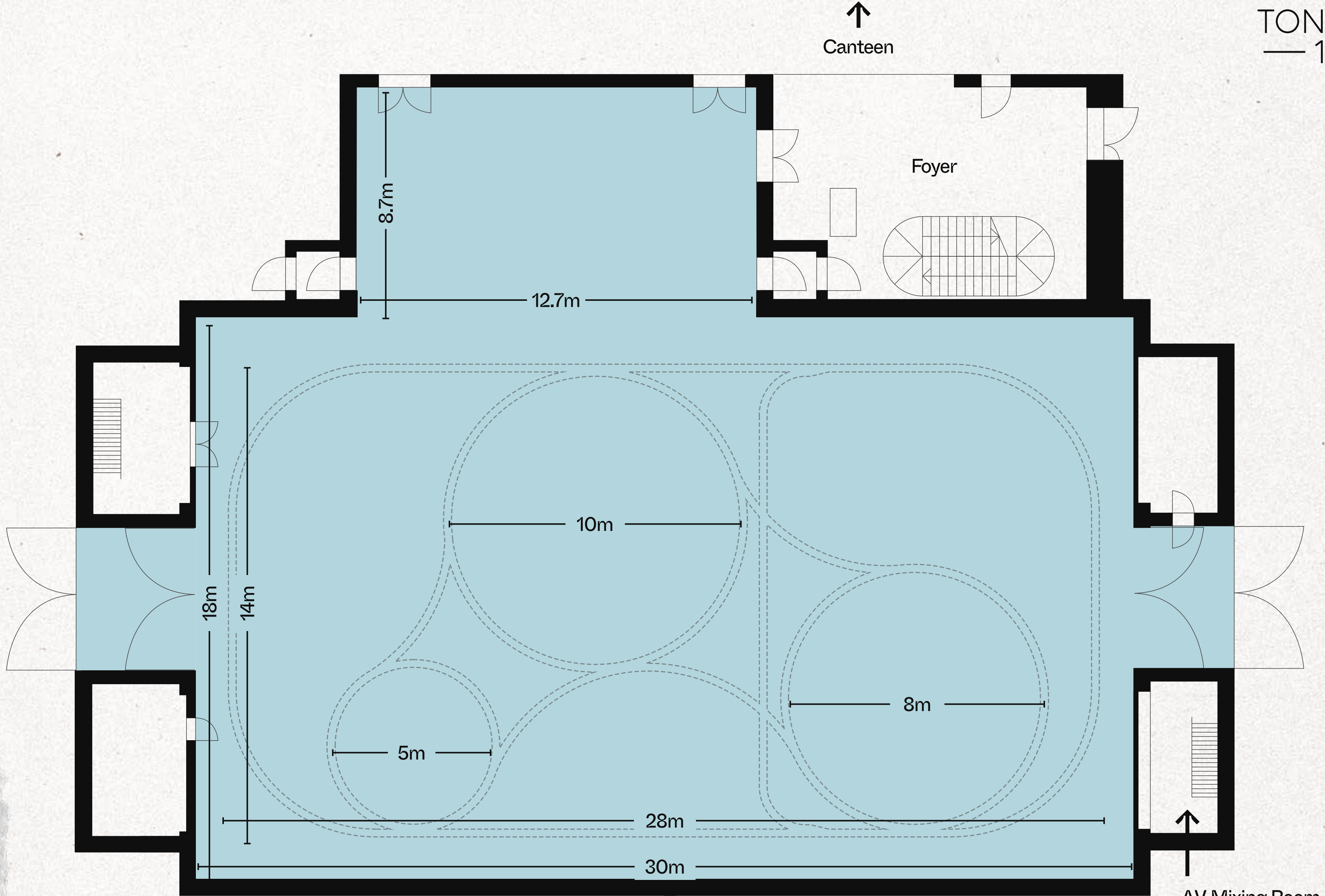
 **1,000+ people**

Capable of accommodating more than 1,000 people.

 **15+ configurations**

A highly adaptable and bespoke curtain rail system allows for subdivision into more than 15 possible configurations, enabling the space to accommodate all sized groups, learning and workshop styles.

Be that concerts, conferences, exhibitions, film screenings or workshops, the possibilities are endless. Additional catering and workspaces spaces add to this flexibility.

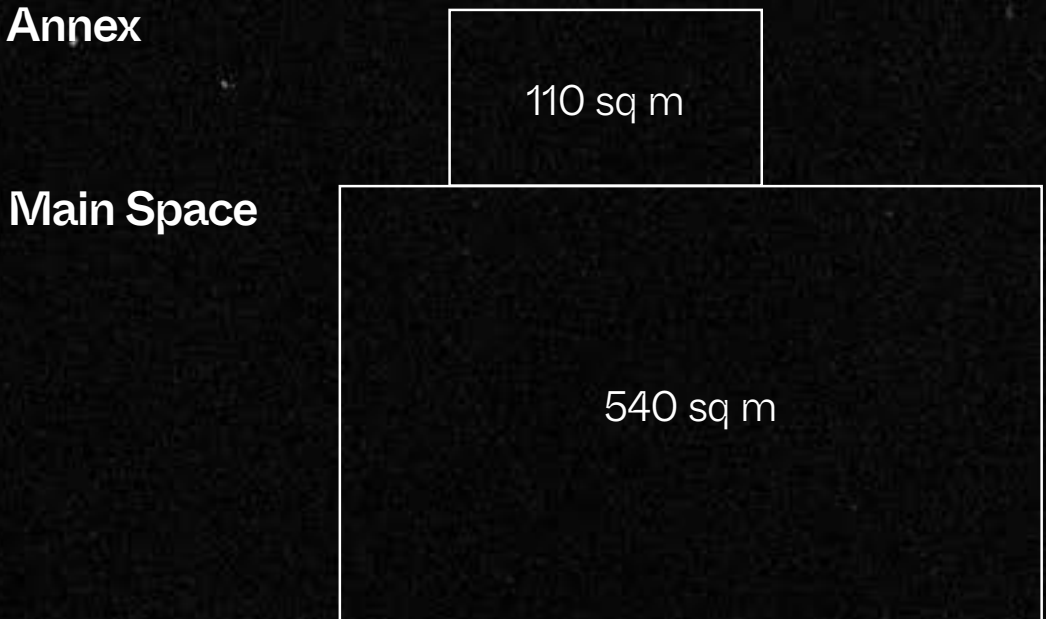


TON
— 1

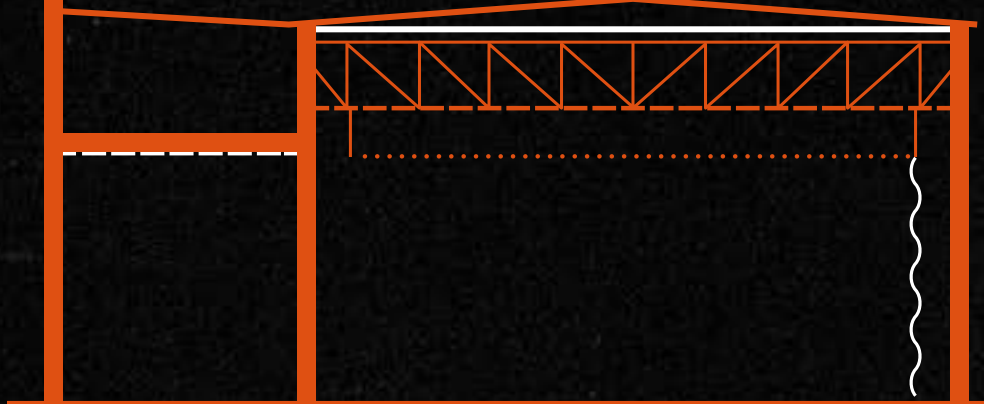
Floor to ceiling height
6.65m to Skyrail

Tailor-made configurations for every format

 Dimension

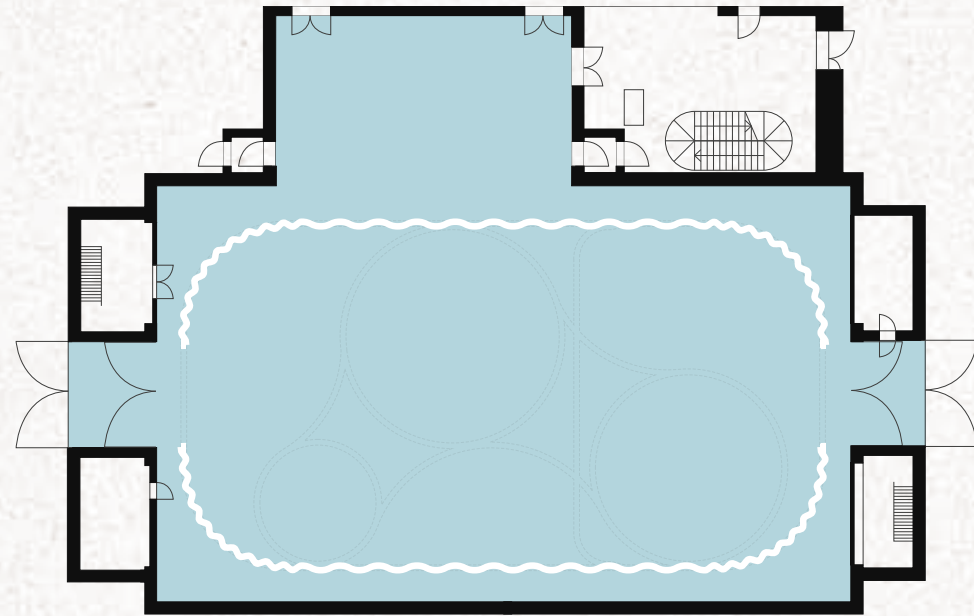


 Floor-to-ceiling Height

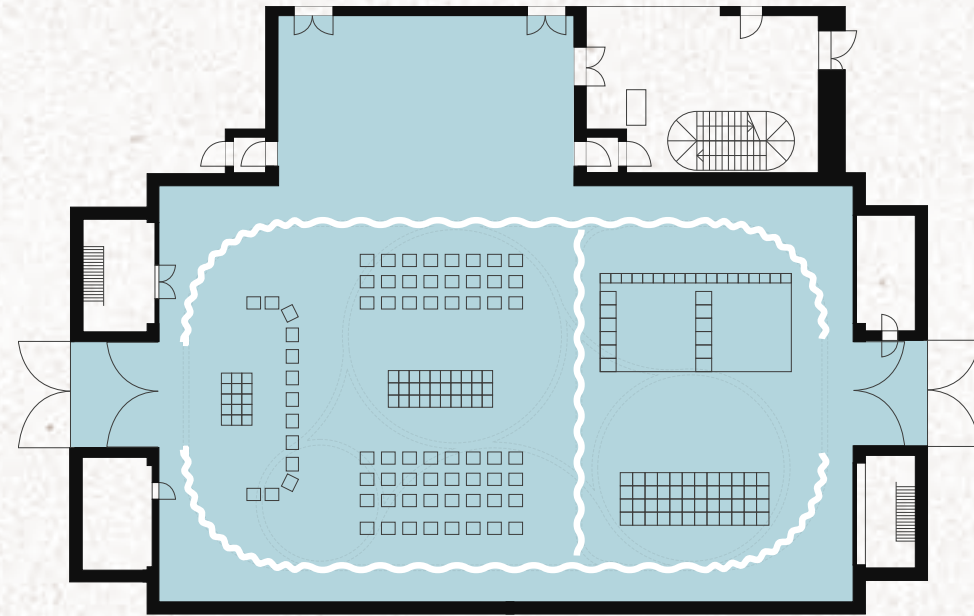


Annex
--- 6.7m to inner ceiling

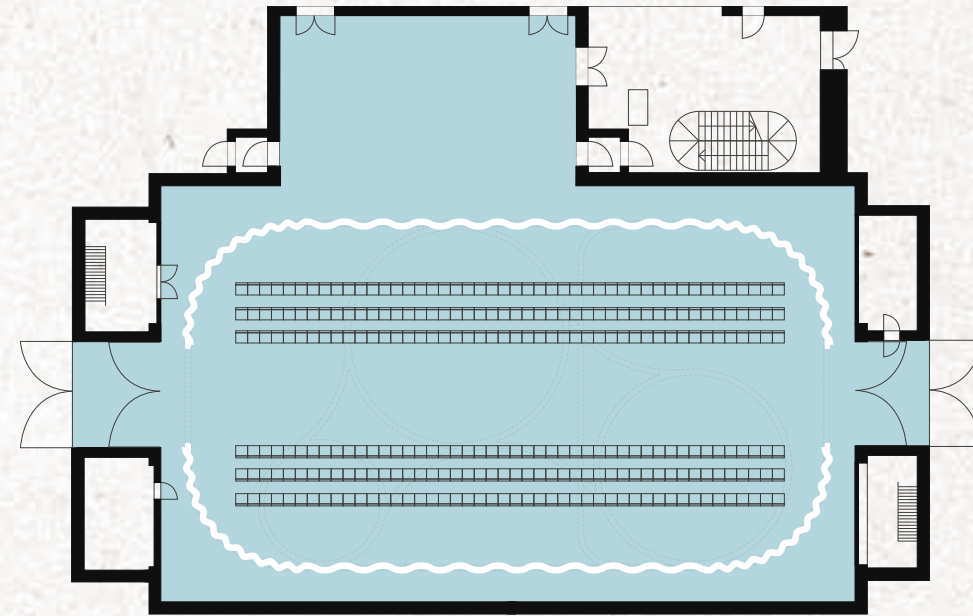
Main Space
— 10.0m to inner ceiling
- - - 8.1m to bottom of roof truss
..... 6.7m to skyrail



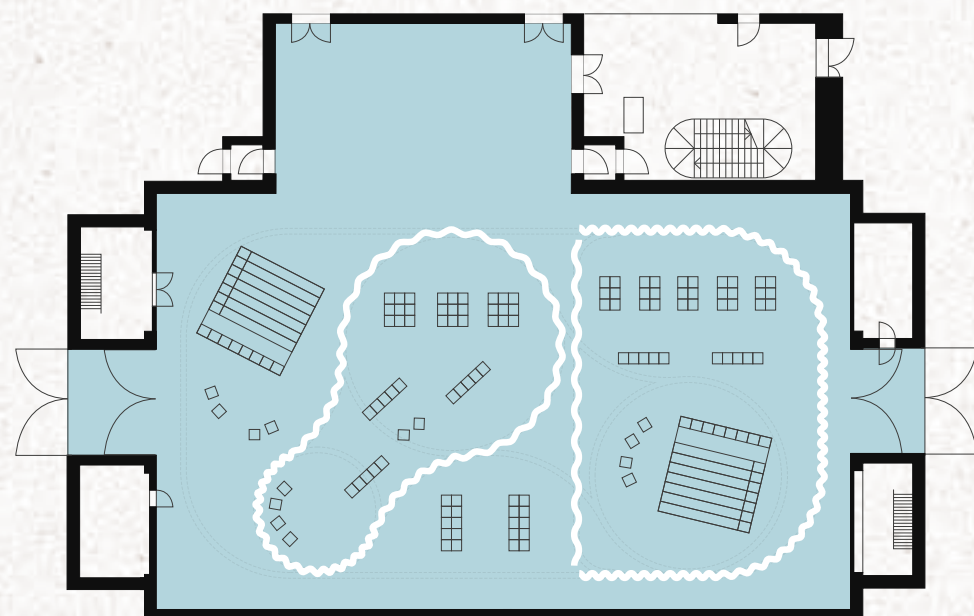
Everyday



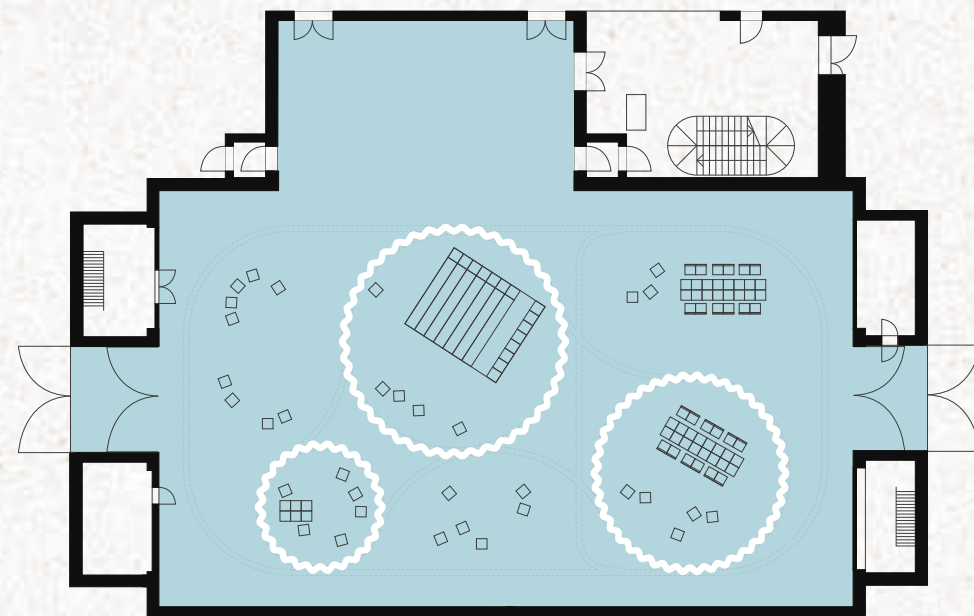
Congresses / Performances



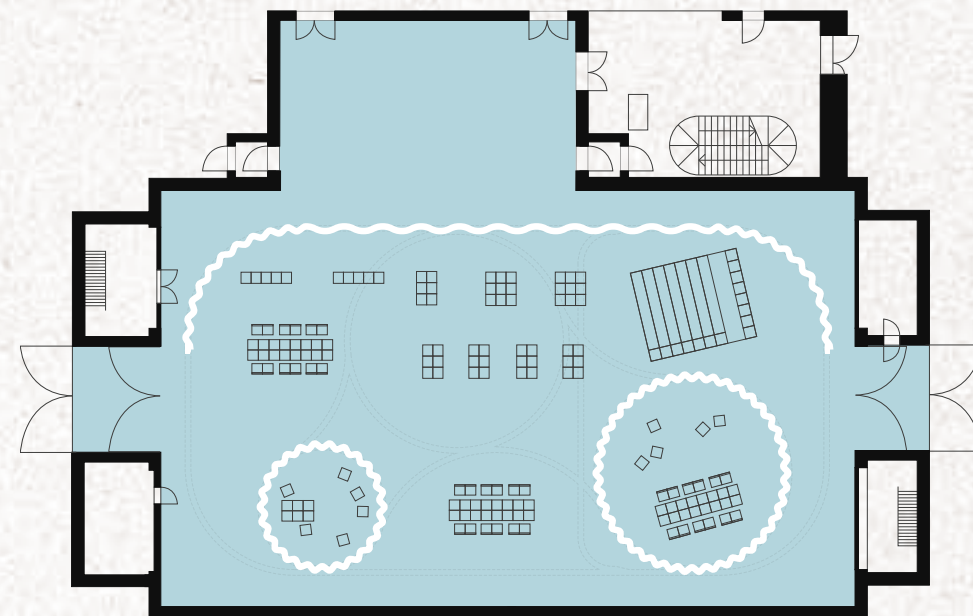
Fashion Show



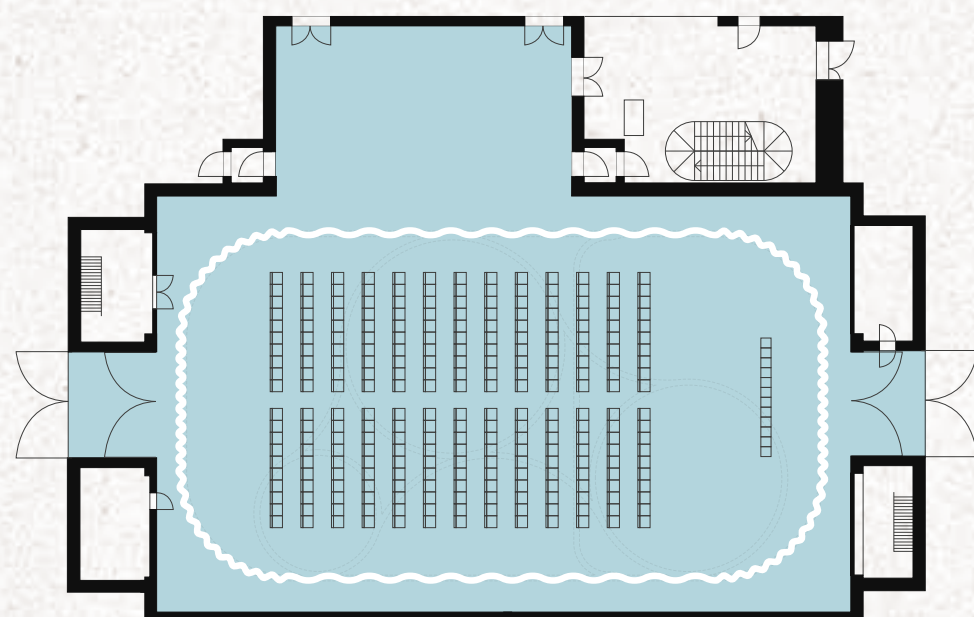
Exhibitions



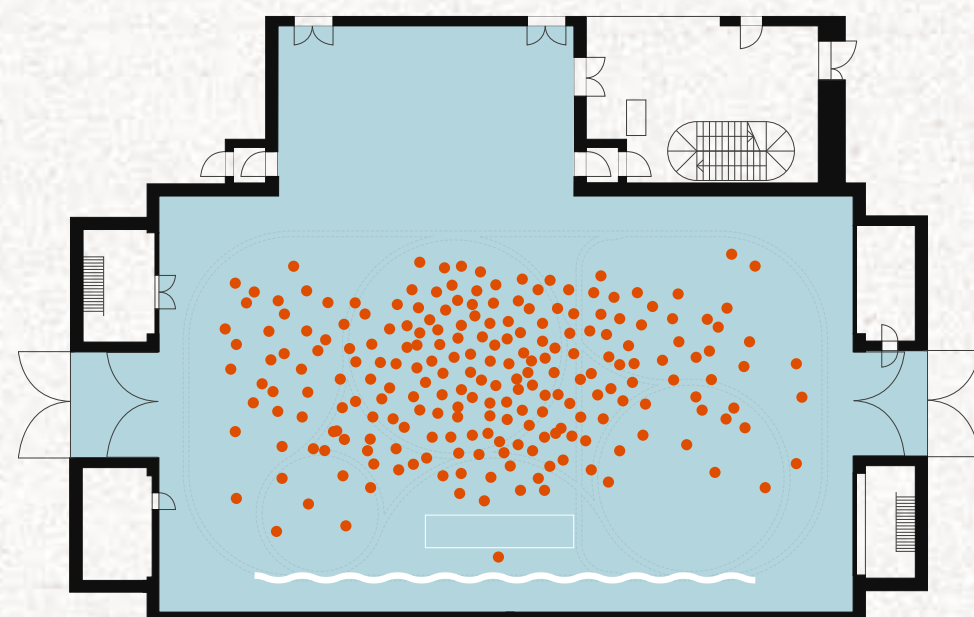
Workshops



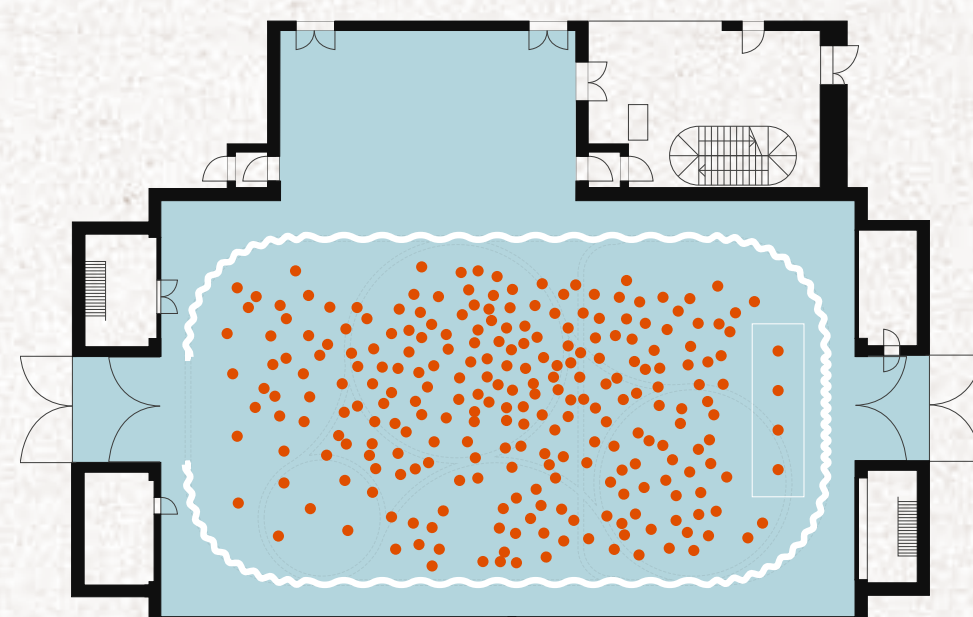
Fairs



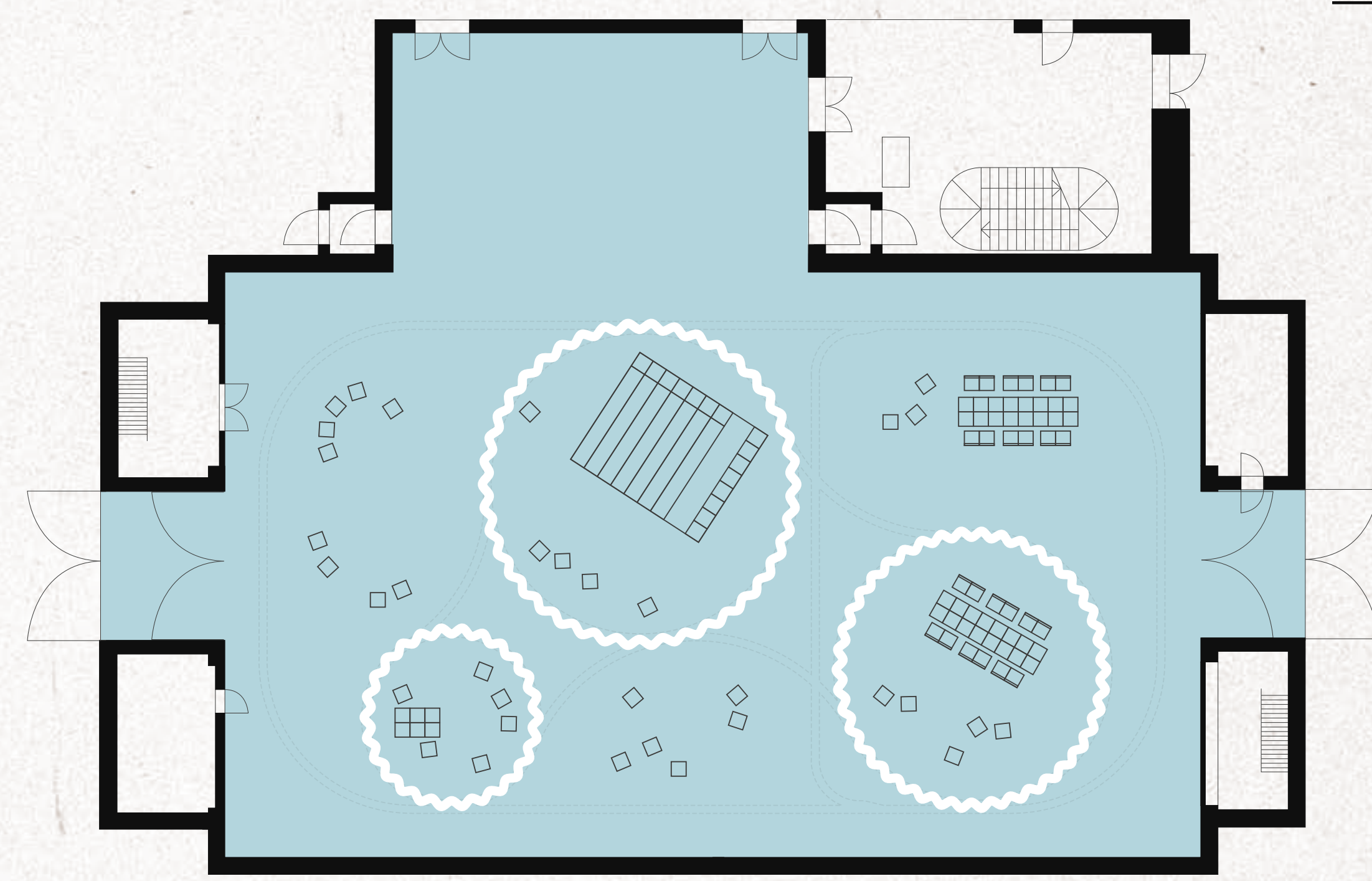
Cinema / Conference




Concert / Party





Rehearsal Space

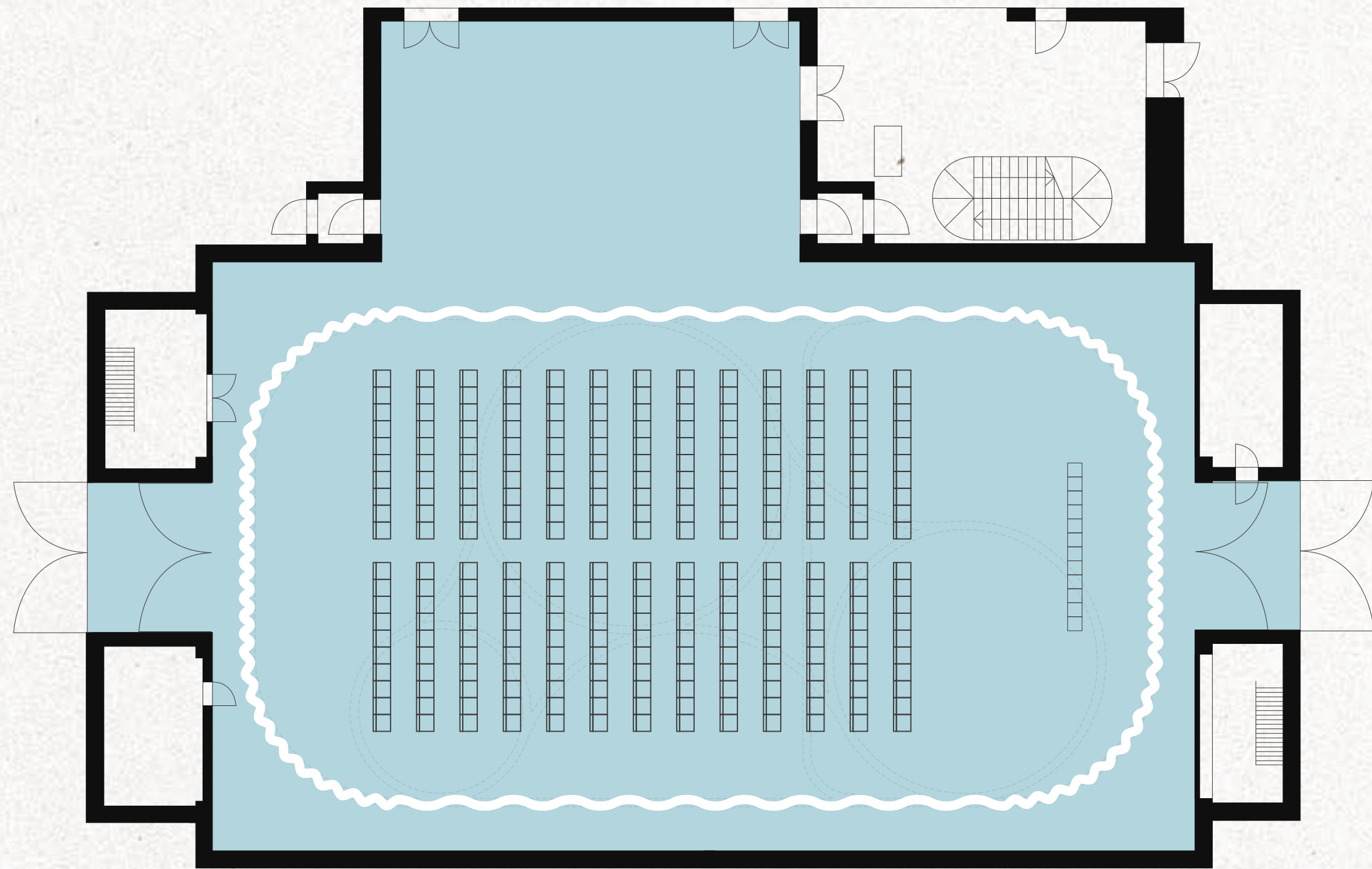


Workshops


 250+ people


 16m² → 540m²


 From small circles to big rooms

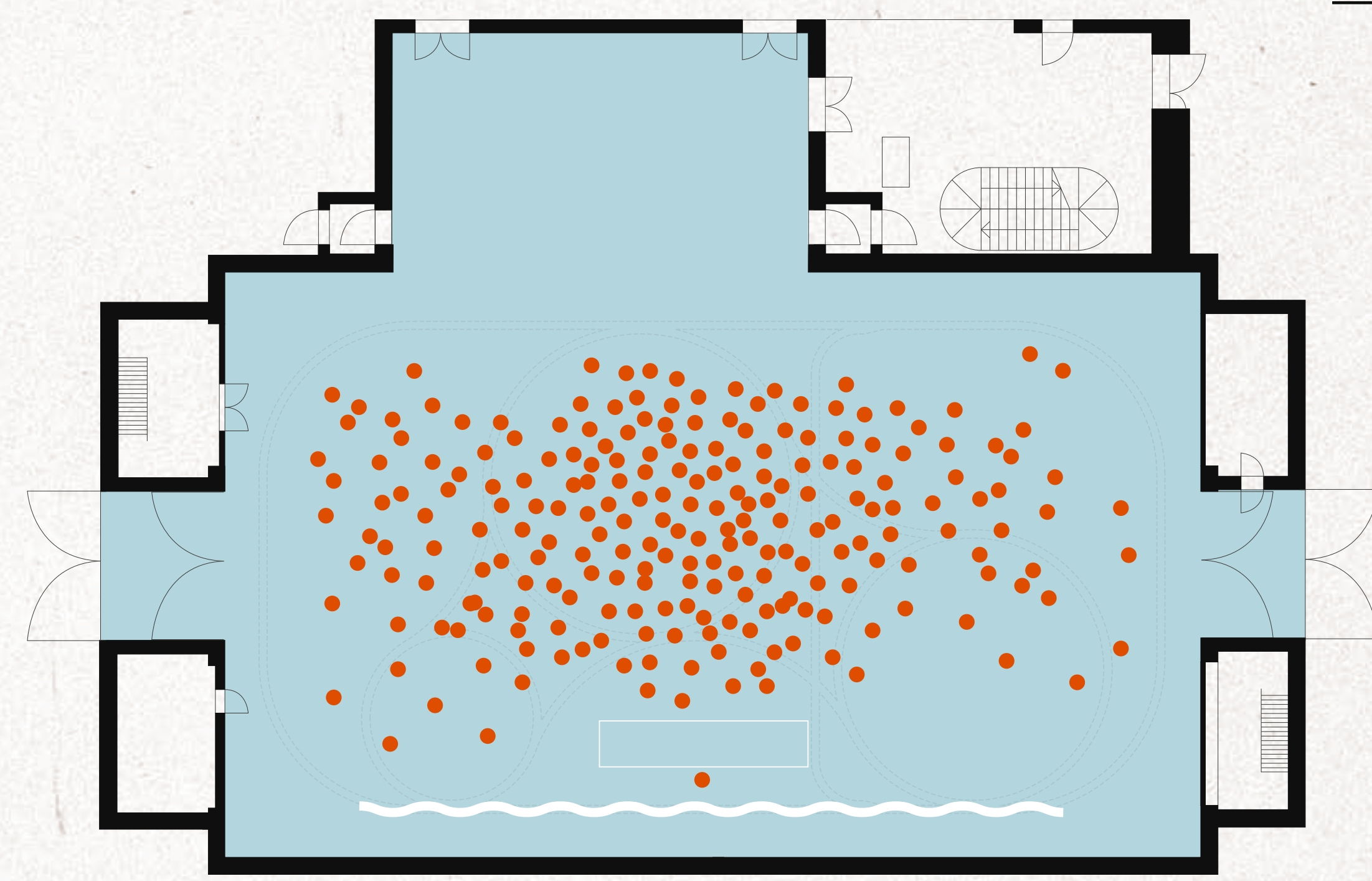
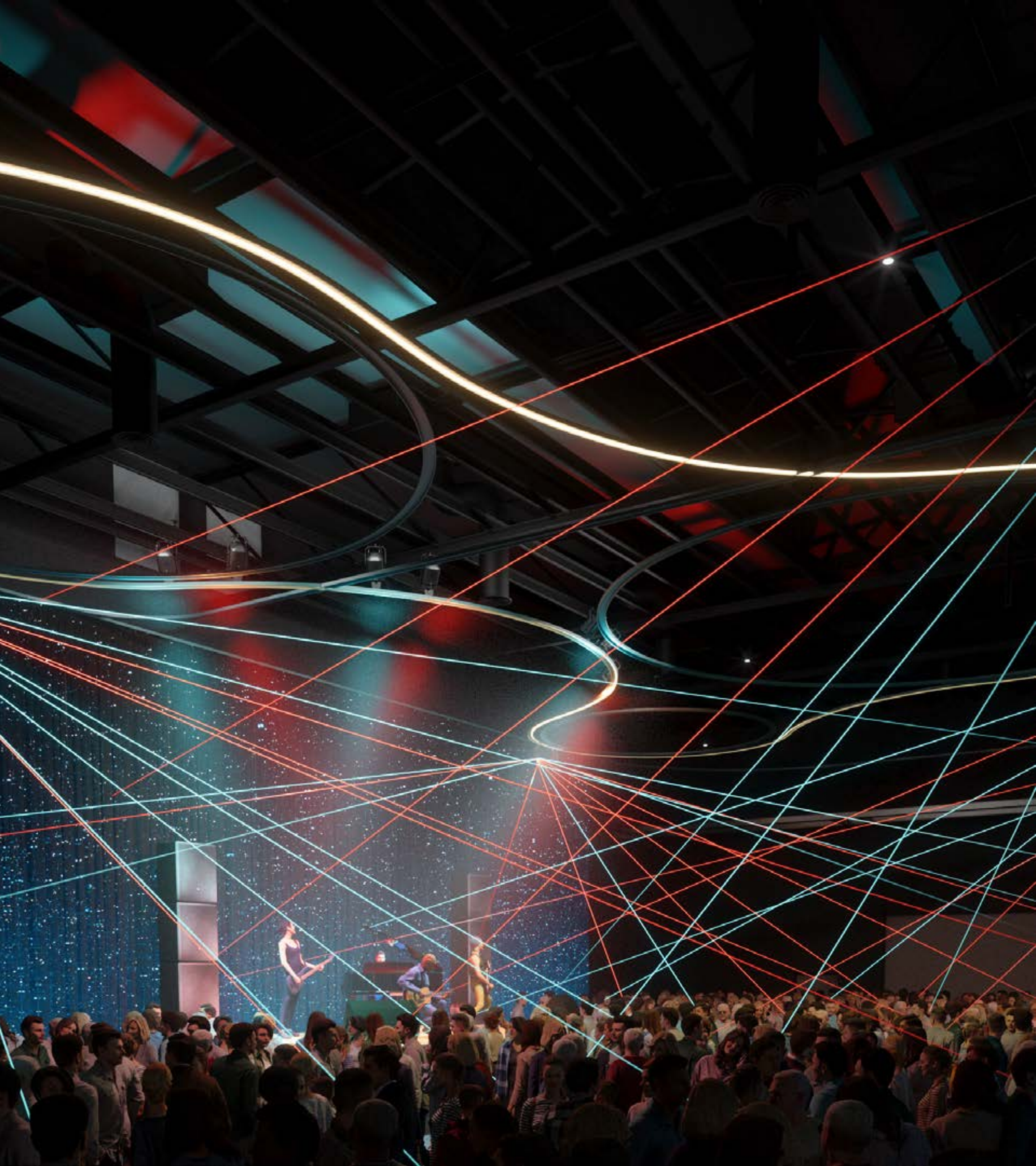


Cinema


 500+ people


 540m²

 Enclosed screening space

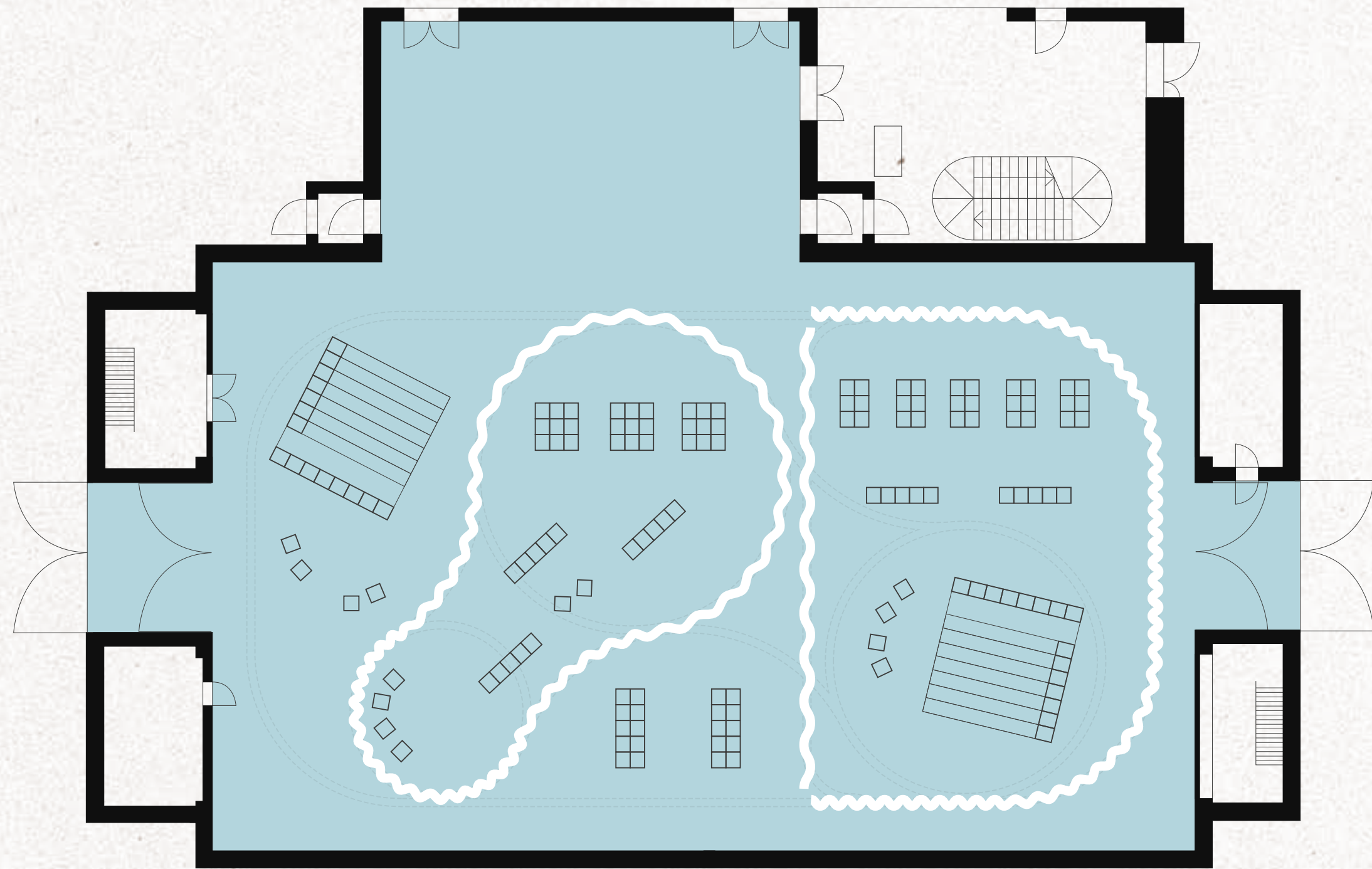


Concert / Party


 1000+ people


 540m²


 Curtains removed



Exhibition

 150+ people

 540m²

 Flexible exhibition space



Ton-1 Specification

700 sq m

Width: 26.0m
Length: 30.0m
Height: 7.0m

Total Area:

From small circles to big rooms:
16m² — 540m²

Multiple Configurations

Curtain Arrangements

Number of arrangements — 15+

1000+ Capacity

A wide range of capacities

From 15—1000+ people

Seated: 500

Standing: 1000+

Audio/Visual

Audio Visual

Lighting

- 10 Movinghead spots
- 10 Moving head washers
- 10 Fresnel lights

Sound

- 5.1 Surround Setup and high-spec mixers
- Line Array Components, including multiple amplifiers
- Microphones and Transmitters

Video/Visual

- Cinema Screen (Size: 880 x 580)
- DCP Server (Digital Cinema Package - allows for playback, recording and streaming)
- Cinema Projector (15,000+ Lumens)

Equipment

Hydraulic ramp

Power & Data

Power/data

- 17 floor tanks
- 5 wall connection panels
- 20 connection points
- In-roof lighting in ceiling area (all 230v)
- 2xCEE sockets (11kw each)
- ZDV distributor
- Power available, 50kw

Furniture

Furniture

Stages: 2
Chairs: 500
Tribune (x2): 20 person capacity

Facilities

15 toilets are available in the Ton-1 building, with more available across the campus

Site Amenities

 Free wifi

 Make-up rooms

 Workspaces

 Canteen/Bar

 Dressing room

 Prop room

Ton-1 Connectivity



On Bike

- Tempelhofer Feld **5 mins**
- Goltzstraße **5 mins**
- Herrmannplatz **13 mins**
- Friedrichstraße **13 mins**
- Oranienplatz **22 mins**
- City West **35 mins**
- Hauptbahnhof **36 mins**



On Foot

- Herrmannstrasse **16 mins**
- Alt-Tempelhof **22 mins**
- Tempelhof **27 mins**



By Train

- Sudkreuz **16 mins**
- Hauptbahnhof **30 mins**
- Brandenburg Airport **30 mins**



By Car

- Sudkreuz **6 mins**
- Brandenburg Airport **8 mins**
- Hauptbahnhof **16 mins**



Atelier Gardens is the **fertile soil** from which creativity, sustainability and a sense of purpose **emerge**

Contact us

Oberlandstraße 26–35 12099
Berlin, Germany

info@atelier-gardens.berlin

atelier-gardens.com

ATELIER
GARDENS

TON
— 1