

**BRIDGE**  
STUDIOS BERLIN

---

**STUDIO 1**  
THE REAL DAYLIGHT STUDIO

<b>SPECS STUDIO 1 / DAYLIGHT:</b>	220 m <sup>2</sup> studio space, 30 m <sup>2</sup> gallery, 60 m <sup>2</sup> terrace, all with water front view 30 m <sup>2</sup> dining area/kitchen, 50 m <sup>2</sup> collection room, 300 m <sup>2</sup> courtyard area
<b>CEILING HEIGHT:</b>	5 m
<b>STUDIO GATE:</b>	4 m high, 3.5 m wide / roller doors - studio accessible up to 2.5 t
<b>POWER SUPPLY:</b>	3 x 32 A, 17 x 230 V
<b>EQUIPMENT:</b>	Over 4 m high windows on 3 sides, (can be darkened individually) 12 m x 1 m glass floor that can be illuminated from below, underfloor heating W-Lan, kitchen, coffee machine, drinks fridge, clothes rack

## PRICES STUDIO 1

(only bookable in combination with Studio 2)

**DAILY RENT:** STANDARD On request

**STUDIO PRICE INCLUDES:** Studio 1 and 2, \*Shooting time 10 hours/day  
from 10 hours 10% of the daily rate per hour or part thereof  
Electricity (excl. HMI & artificial light)  
5 parking spots directly in front of the studio, autopoies and styros

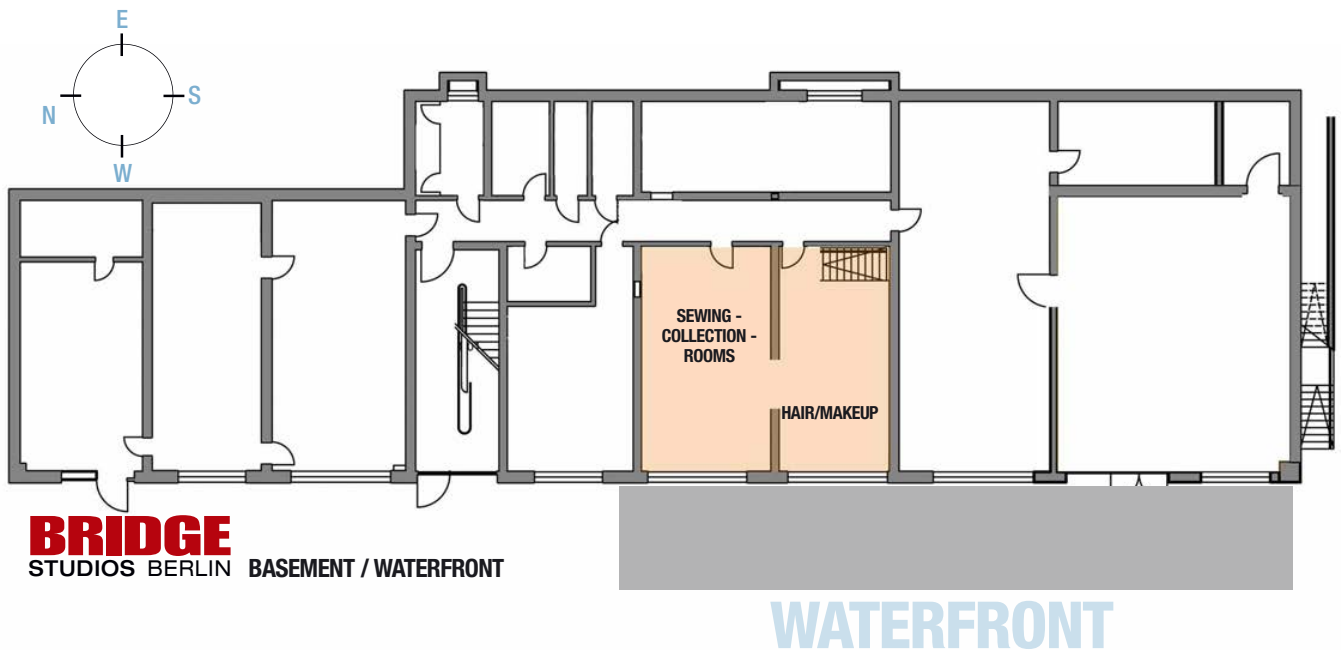
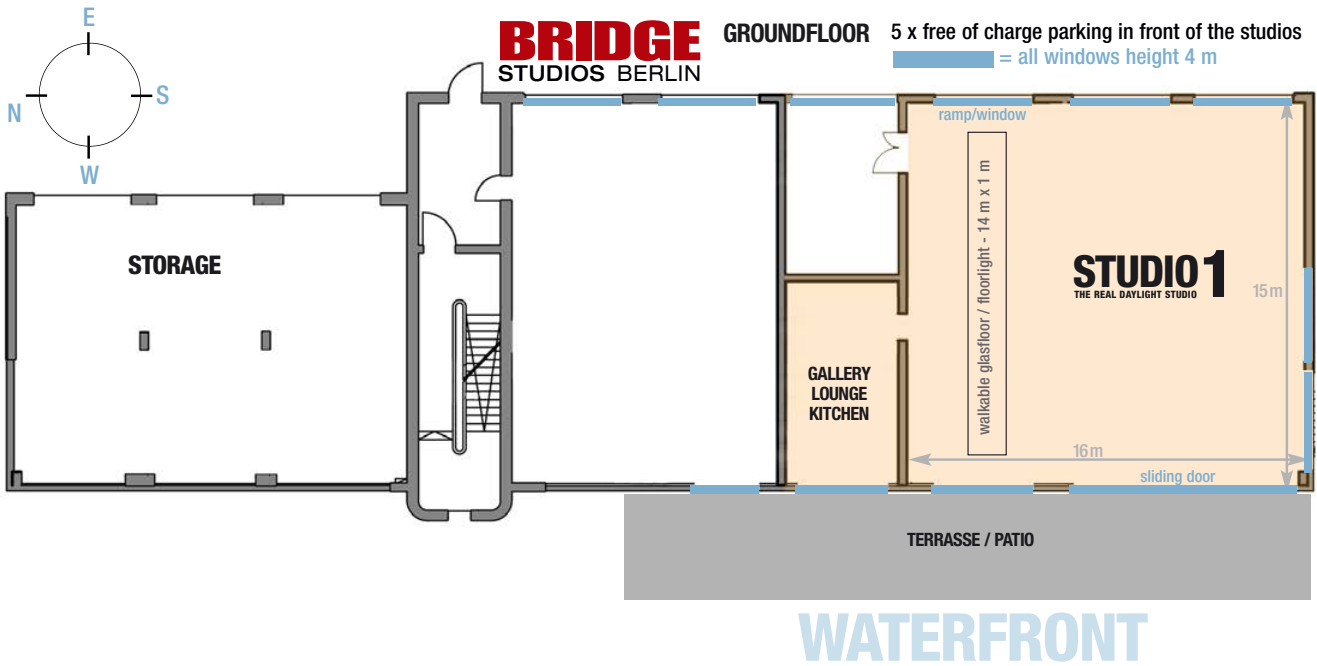
## CHARGEABLE ADDITIONAL SERVICES:

**Additional studio supervisor(s):** 400,- €/10 hours  
Electricity: HMI & artificial light according to consumption (40ct/kWh)  
Final cleaning 200,- €  
Winter only: Heating flat rate of 200,- €/day

**ON REQUEST:** Props, furniture  
Catering (via our service partner FLORIS Catering), offer on request  
Please enquire about prices for editorial, events and film as well as for teams of more than 15 persons.

\* All prices plus applicable VAT. The general terms and conditions apply.





**BRIDGE**  
STUDIOS BERLIN

---

**STUDIO 2**  
CYCLORAMA / INFINITY

<b>SPECS STUDIO 2 / INFINITY:</b>	150 m <sup>2</sup> studio space, 30 m <sup>2</sup> styling/make-up (daylight), 60 m <sup>2</sup> terrace, all with water view, 30 m <sup>2</sup> dining area/kitchen, 50 m <sup>2</sup> collection room, 300 m <sup>2</sup> courtyard area
<b>INFINITY COVE:</b>	W 6.5m x D7 m X H 4.5m/ approx. 70 m <sup>2</sup>
<b>CEILING HEIGHT:</b>	4.5 m
<b>STUDIO GATE</b>	4m height, 3.5m width / roller shutter doors
<b>POWER SUPPLY:</b>	3 x 32 A, 10 x 230 V
<b>EQUIPMENT:</b>	Over 4 m high windows on 2 sides, (can be darkened individually) Underfloor heating, W-Lan, kitchen, coffee machine, drinks fridge Coat rack

## PRICES STUDIO 2

(only bookable in combination with Studio 1)

**DAILY RENT:** On request

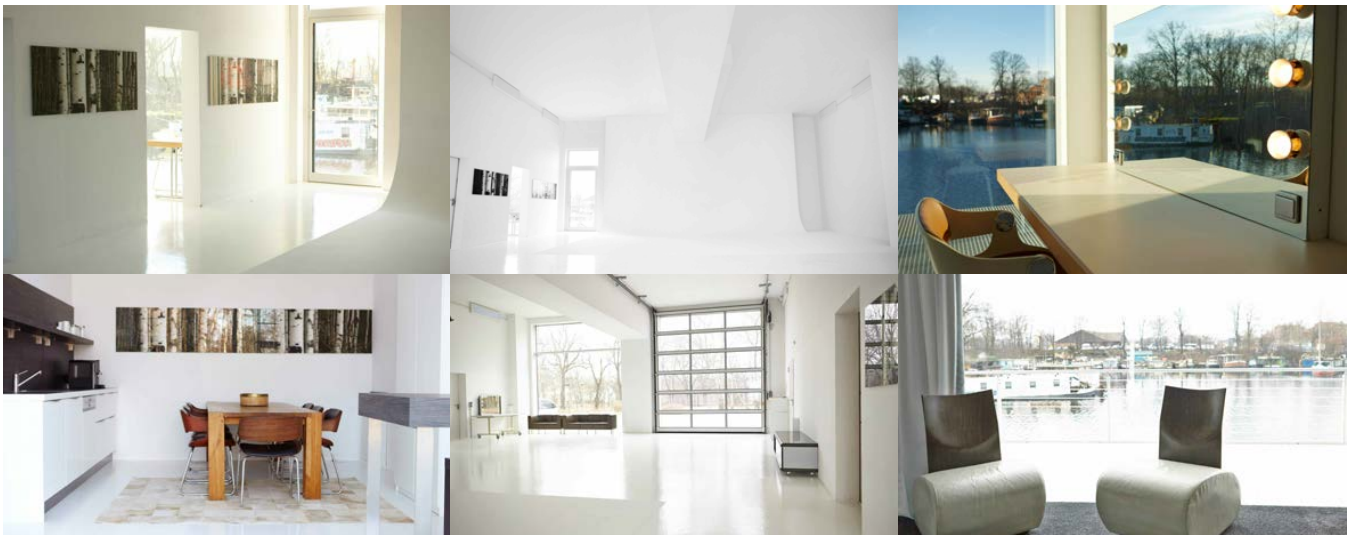
**STUDIO PRICE INCLUDES:** Studio 1 and 2, \*Shooting time 10 hours/day  
after 10 hours 10% of the daily rate per hour or part thereof  
Electricity (excl. HMI & artificial light)  
5 parking spots directly in front of the studio, autopoies and styros

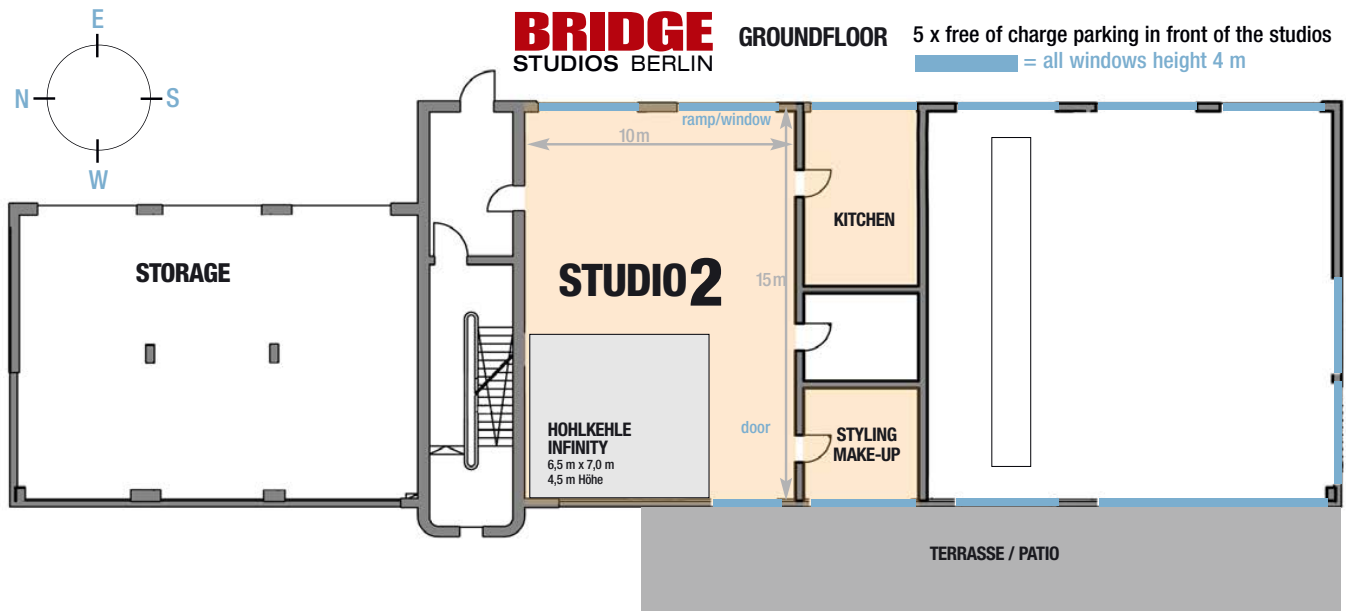
## CHARGEABLE ADDITIONAL SERVICES:

**Additional studio supervisor(s):** 400,- €/10 hours  
Painting of the infinity cove: 5,- €/ sqm  
Electricity: HMI & artificial light according to consumption (40ct/kWh)  
Final cleaning 200,- €  
Winter only: Heating flat rate of 200,- €/day

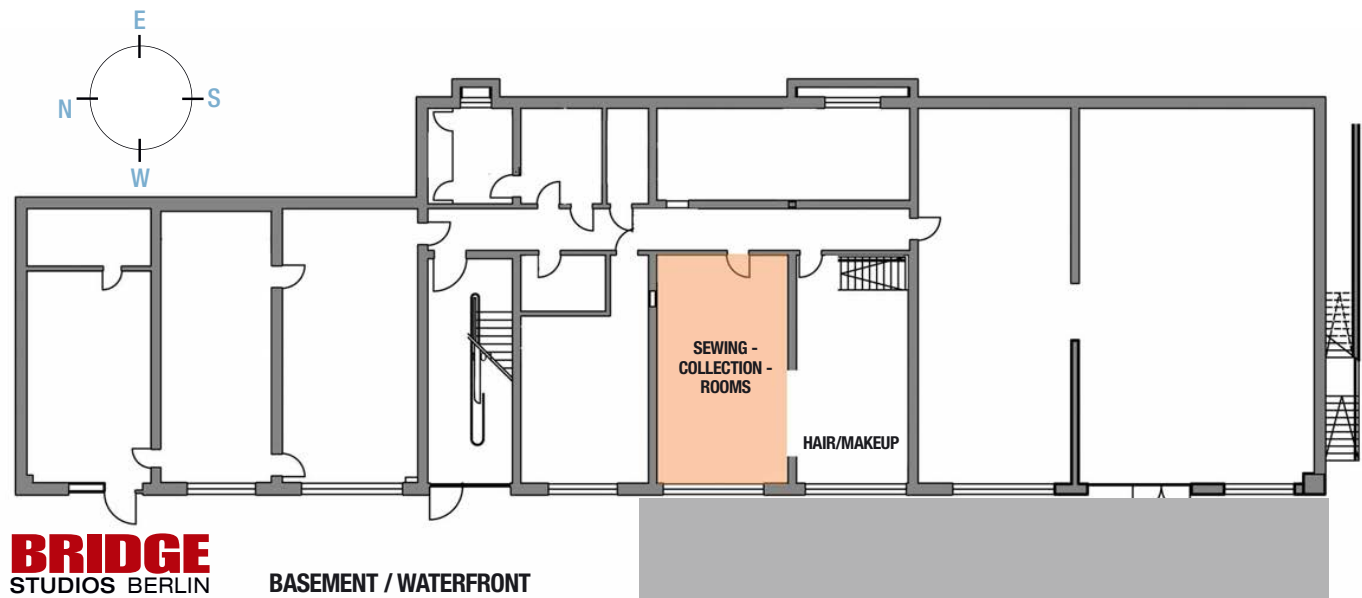
**ON REQUEST:** props, furniture  
Catering (via our service partner FLORIS Catering), offer on request  
Please enquire about prices for editorial staff, events and film as well as for teams of more than 15 persons.

All prices plus applicable VAT. The general terms and conditions apply.





WATERFRONT



WATERFRONT

**BRIDGE**  
STUDIOS BERLIN

---

**STUDIO 3**  
THE REAL DAYLIGHT STUDIO



**SPECS STUDIO 2 / DAYLIGHT:** 150 m<sup>2</sup> studio space, 110 m<sup>2</sup> production space, 17 m<sup>2</sup> gallery, 7 m<sup>2</sup> storage space, 10 m<sup>2</sup> sanitary facilities with shower, 300 m<sup>2</sup> courtyard area

**CEILING HEIGHT:** 4.2 m

**STUDIO GATE:** 4m height, 3,5 m width / rolling gates - studio accessible by car

**POWER SUPPLY:** 1 x 32 A, 5 x 230 V

**EQUIPMENT:** 4 m high window area on one side (W 3.5m x H 4m), W-Lan, coffee machine, drinks refrigerator, clothes rack, ethanol fireplace wall

## PRICES STUDIO 3

(bookable separately)

**DAILY RENT:** On request

**STUDIO PRICE INCLUDES:** \*Shooting time 10 hours/day  
from 10 hours 10% of daily rate per hour or part thereof.  
Electricity (excl. HMI & artificial light)  
3 parking spots directly in front of the studio

## CHARGEABLE ADDITIONAL SERVICES:

**Additional studio supervisor(s):** 400,- €/10 hours  
Electricity: HMI & artificial light according to consumption (40ct/kWh)  
Final cleaning 100,- €  
Winter only: Heating flat rate of 90,- €/day

**ON REQUEST:** Props, furniture  
Catering (via our service partner FLORIS Catering), offer on request  
Please enquire about prices for editorial staff, events and film as well as for teams of more than 15 persons.

All prices plus applicable VAT. The general terms and conditions apply.

