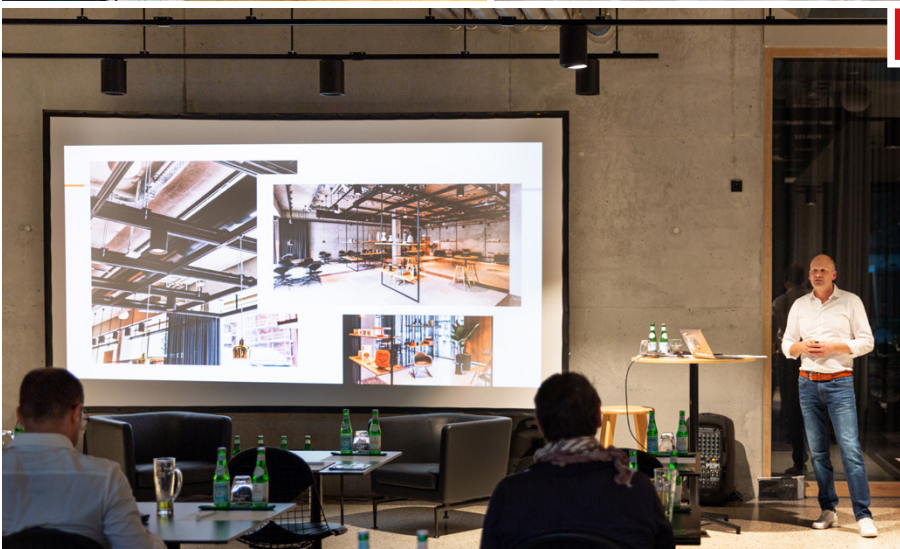
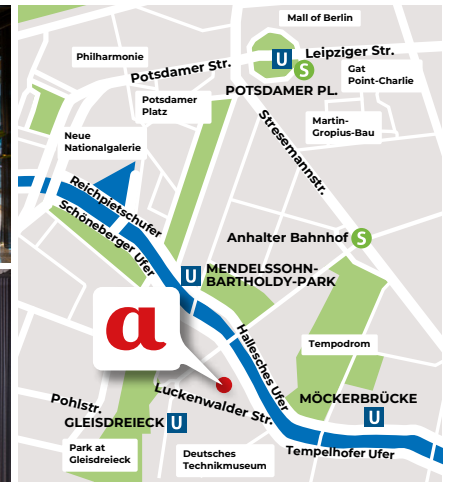


# Data sheet | Popup Station

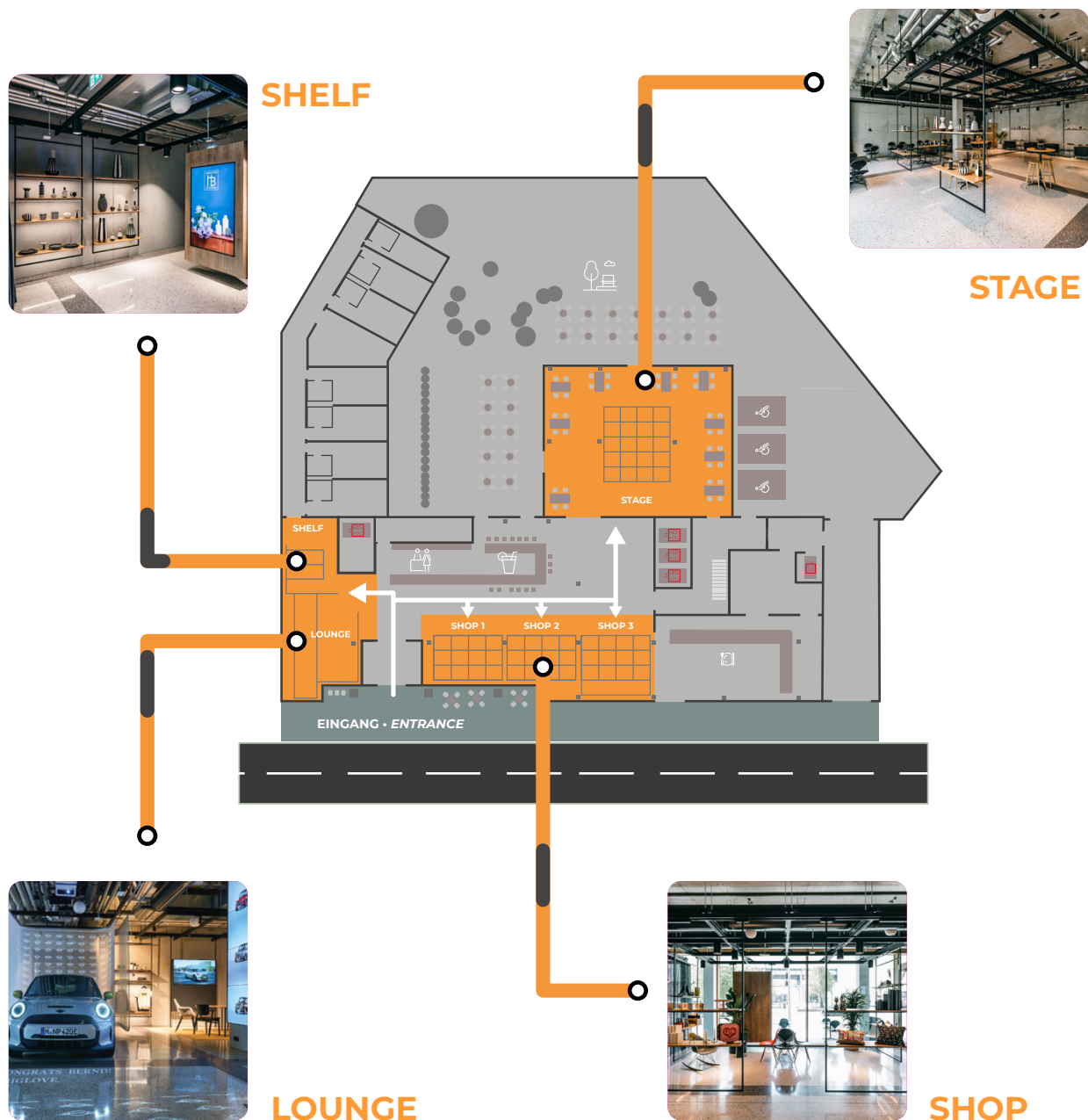
- | Mikro- & Oder fairs
- | Premium Retail Shops
- | Shared Spaces



-  **20 m** Station Berlin Exhibition & Event Centre
-  **50 m** U-Bahn station Gleisdreieck
- 300 m** Museum of Technology
- 350 m** Gleisdreieckpark
- 900 m** Tempodrom
- 950 m** Potsdamer Platz
- 1,5 km** Mall of Berlin
- 1,7 km** Checkpoint Charlie
- 1,8 km** Holocaust Memorial
- 2 km** Brandenburg Gate

Luckenwalder Straße 12, 10963  
50m distance from U-Gleisdreieck (U1 & U2)  
Directly opposite the fair / Station Berlin

The PopUp Station merges with our hotel concept and offers you through high-quality equipment from Vitra the perfect environment for the presentation of your products. With the flexible shelving systems „Multilane by Visplay“ you have the possibility to create the store according to your own wishes. Since the PopUp Station is hotel with international guests of different target groups who have a long stay, our product is predestined for the exhibition of your high-involvement products.





# Data sheet Popup Station

Luckenwalder Straße 12, 10963



## LOUNGE



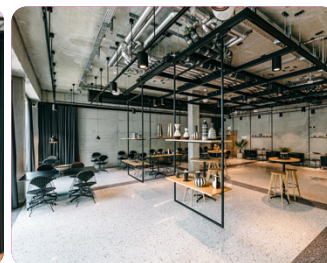
## SHELF



## SHOP



## STAGE



### LOUNGE

### SHELF

### SHOP

### STAGE

Area	50 m <sup>2</sup>	10 m <sup>2</sup>	110 m <sup>2</sup>	180 m <sup>2</sup>
Height	2,85 m	2,85 m	2,85 m	3,10 m
Floor	First Floor	First Floor	First Floor	First Floor
Electricity / Heavy current	Yes / No	Yes / No	Yes / No	Yes / Yes 16A
Water	No	No	No	after consultation
Wifi	Yes	Yes	Yes	Yes
Passable by car	Yes	Yes	Yes	Yes
Adjustable light intensity	Yes	Yes	Yes	Yes
Catering	Yes	Yes	Yes	Yes
Type of use	Exhibition / Presentation / Sale / Pop-up Micro-Fair	Exhibition / Presentation / Sale / Pop-up Micro-Fair	Exhibition / Presentation / Sale / Pop-up Micro-Fair	Exhibition / Presentation / Sale / Pop-up Micro Fair / Reading
Personnel	after consultation	after consultation	after consultation	after consultation
Audio equipment	after consultation	after consultation	after consultation	after consultation
Presentation equipment	NEC moonitor / video wall / TV modul	NECmoinitor / video wall / TV modul	NEC monitore	projector
A/C	Yes	Yes	Yes	Yes
Rental period	after consultation	after consultation	after consultation	after consultation
Terrace	No	No	No	Yes
Own parking space	No	No	No	No
Seating	Lounge Sofa / chair	after consultation	after consultation	after consultation
Heating / Ventilation	Yes / Yes	Yes / Yes	Yes / Yes	Yes / Yes
Darkening	No	No	No	Yes

# Prices

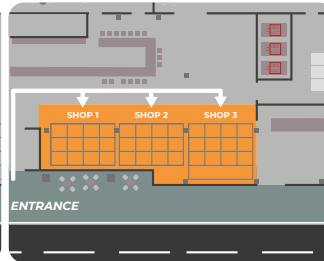
## LOUNGE



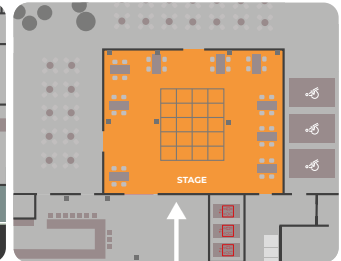
## SHELF



## SHOP



## STAGE



	LOUNGE	SHELF	SHOP (einzel)	SHOP (gesamt)	STAGE (Messe)	STAGE (Tagung)
Room rent	600 €	300 €	500 €	1.400 €	1.800 €	900 €
Assembly and disassembly*	150 €	80 €	100 €	250 €	300 €	nach Absprache
Final cleaning*	80 €	50 €	50 €	140 €	150 €	150 €
staff/ maintenance	after consultation	after consultation	after consultation	after consultation	after consultation	after consultation
F&B	after consultation	after consultation	after consultation	after consultation	after consultation	after consultation

\*Mandatory

### Optional (Shelving systems)

Lighting incl. 3 electrified shelves	125 €
Multilane Shelf & incl. 3 shelves or clothes rail	100 €
Light spot for product lighting in the shelf (only for electrified shelf)	25 €

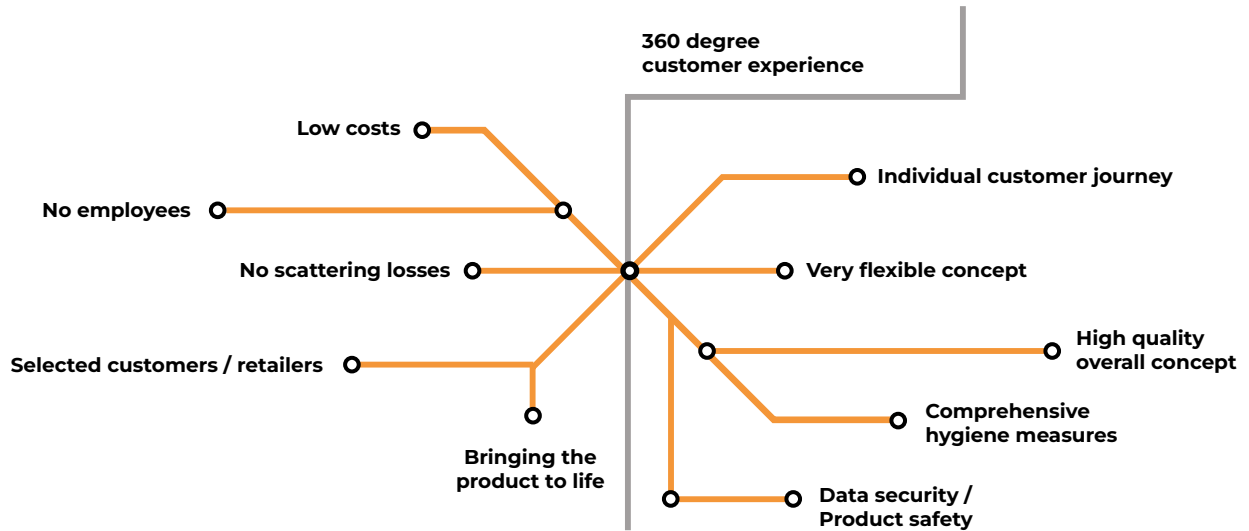
### Optional (Service)

Inserting the Content	85 €/h
-----------------------	--------

### Optional (Technology)

85 Zoll NEC monitor	125 €
projector	125 €
Mediapackage 2 x Microfon & 2 x Speaker & 2 Stands)	100 €
LED Wall – Hotel entrance (incl. inserting of the content)	500 €
Screen (2m*3,55m)	80 €

# Summary



# References



NATURAL GAS  
EV-POWER  
HYDROGEN

