

WHERE



MICE



S



NICE



# AT A GLANCE

AMERON

BERLIN  
ABION SPREEBÖGEN WATERSIDE

Airhoff Hotels

  
BOLLE'S KÖCHE  
GEKOCHETE EVENTKUNST

  
BOLLE  
Festsäle



- Historical event venue & 4-star hotel in the center of Berlin
- 12 meeting rooms for up to 750 guests
- 243 hotel rooms and suites with free wlan and air condition
- In-house catering Bolles Küche
- Good connections to the main train station, trade fair, airport and motorways
- Public underground car park

# ENTRÉE & KONTORFOYER

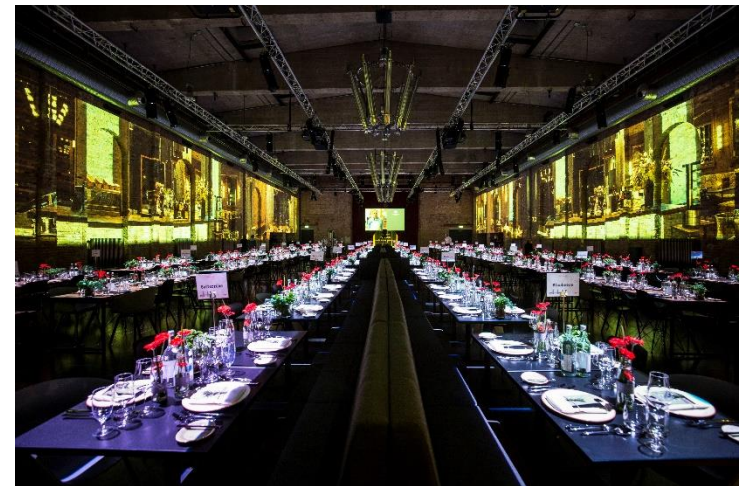
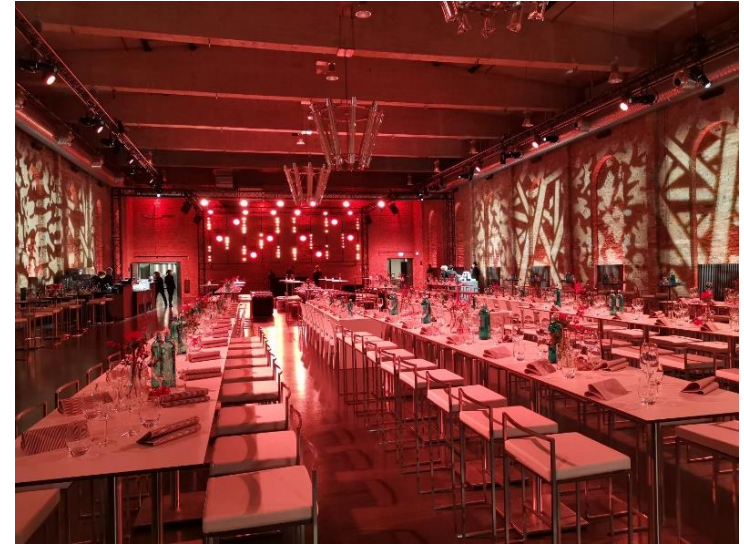
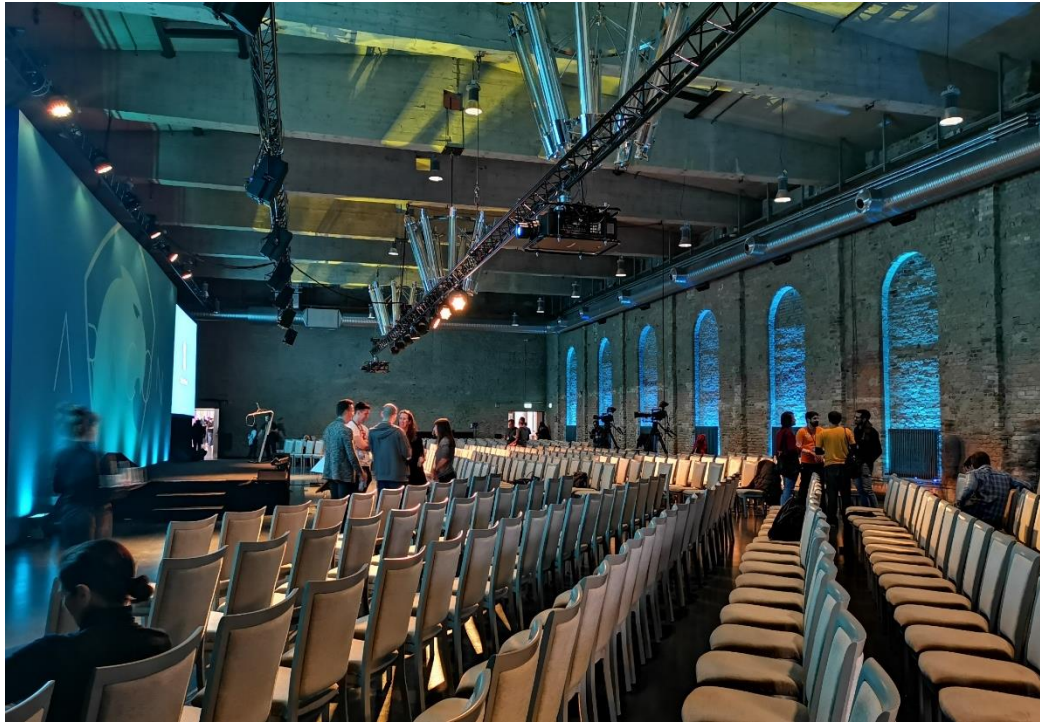


- Entrance area with 30sqm
- Ambient light, heating
- Indoor and outdoor branding possibilities

- 165sqm foyer for the cloakroom and accreditation area
- 3 Kontor rooms à 23sqm for organisation officies, smaller workshops etc.
- Wlan, heating, ambient light, industrial design furniture



# KAPELLE



- 720sqm (40 x 18m), 7,20m ceiling height
- Former factory chapel of the Carl Bolle dairy
- Bare brick walls, unsupported concrete ceiling, industrial design chandeliers
- Wlan, heating, ventilation system, ambient light, rigging points, high-voltage current, technical device for bringing in cars
- Equipment for dinners and conferences available

# FESTSAAL



- 800sqm (42 x 18m), 5,70m Deckenhöhe
- Chandeliers made from sandblasted milk bottles of the Carl Bolle dairy, 5m high industrial windows, original, preserved wooden roof
- Wlan, heating, ventilation system, ambient light, rigging points, high-voltage current, daylight
- Equipment for dinners and conferences available

# MILCHBAR & ROOF TERRACE



- 66sqm (10 x 6,50m)
- Industrial design, Chesterfield seating areas, milking stools, contemporary artworks, original, preserved window facade with view of the Kleiner Tiergarten
- Ambient light, daylight, heating, bar counter, refrigerators, beer dispenser, direct access to the roof terrace

- 120sqm (13,50 x 9m)
- Lounge furniture, bar and bar tables are available
- Ambient light
- 180 degree view over Berlin



# WORKSHOP SPACES AT THE HOTEL

AMERON

BERLIN  
ABION SPREEBOGEN WATERSIDE

Althoff Hotels



- 8 meeting rooms from 12 up to 400 guests
- daylight | dimming
- High ceilings
- Modular room sizes
- Air conditioning
- Wlan

- Stages
- Podium
- Sound system
- Projector
- Video technology

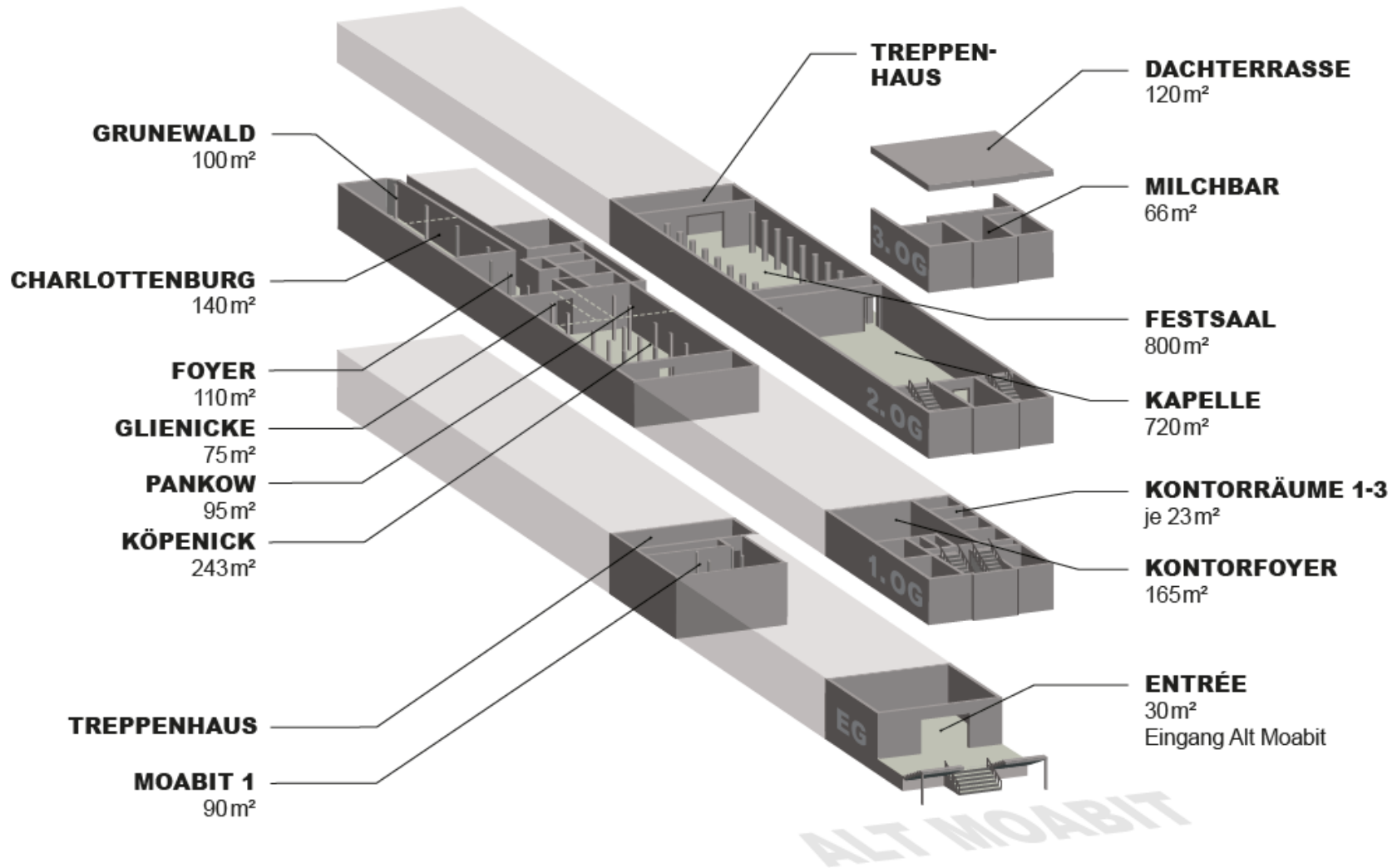
# 3D PLAN

AMERON

BERLIN  
ABION SPREEBOGEN WATERSIDE

Althoff Hotels

**BOLLE**  
Festsäle





# CAPACITIES BOLLE



RAUM LOCATION	EMPFANG RECEPTION	REIHEN RECEPTION	PARLAMENT RECEPTION	TAFELN RECEPTION	BANKETT RECEPTION	MISCH RECEPTION	FLÄCHE (M <sub>2</sub> ) AREA
KAPELLE	600	650	480	500	400	400	720
FESTSAAL	500	400	300	440	400	500	800
KONTORFOYER	80	50				30	165
KONTORRÄUME 1-3						je 16	je 23
MILCHBAR	40					30	66
DACHTERRASSE	70					50	120

\* Maximum capacity depends on the room concept (stage size, technology, catering area)

# CAPACITIES HOTEL

AMERON

BERLIN  
ABION SPREEBOGEN WATERSIDE

Althoff Hotels



RAUM LOCATION	BLOCK BLOCK	BANKETT BANQUET	PARLAMENT CLASSROOM	REIHEN THEATRE	FLÄCHE (M <sup>2</sup> ) AREA (M <sup>2</sup> )
PANKOW	24	18	30	56	95
GLIENICKE	24	18	30	56	75
KÖPENICK	30	120	90	186	243
PANKOW + GLIENICKE + KÖPENICK	•	144	168	392	432
GRUNEWALD	24	48	54	96	100
CHARLOTTENBURG	30	64	66	120	140
GRUNEWALD + CHARLOTTENBURG	60	120	114	204	240
BELLEVUE	20	•	•	20	45
DAHLEM	16	12	12	24	40
WANNSEE	16	12	12	24	40
DAHLEM + WANNSEE	28	40	36	60	80

## EQUIPMENT

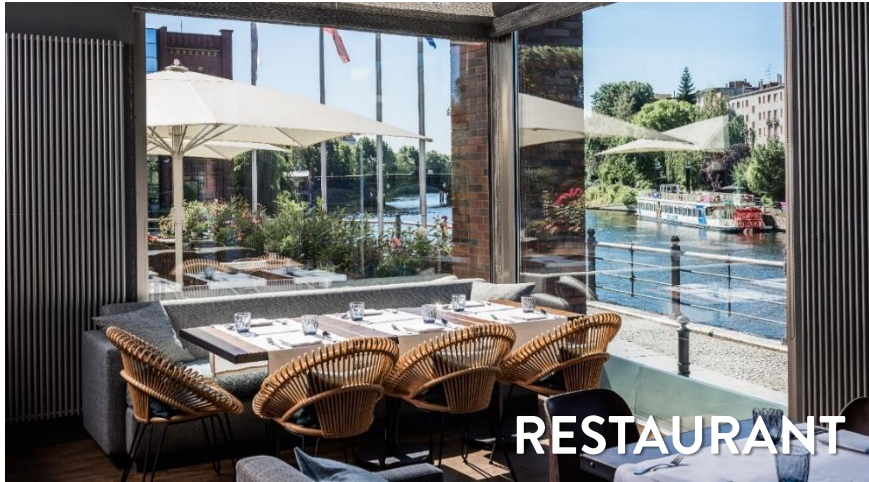
FLIPCHART / PROJECTOR / MICROPHONE / SOUND SYSTEM / HIGH-SPEED-INTERNET / WIFI / FAX /  
PRINTER / TV / MODERATION KIT / SCREEN / DIMMING / SPEAKERS / AIR CONDITIONER / PODIUM /  
STAGE / LECTERN / PARKINGAREA / PINBOARD

# FURTHER VENUES

AMERON

BERLIN  
ABION SPREEBOGEN WATERSIDE

Althoff Hotels



RESTAURANT



CARL & SOPHIE

For up to 60 people seated & 80 people with mixed seating



ALTE MEIEREI

For up to 150 Pax



ABION YACHT AIDA

For exclusive events with up to 20 Pax

# HOTELZIMMER

AMERON AMERON

BERLIN  
ABION SPREEBOGEN WATERSIDE

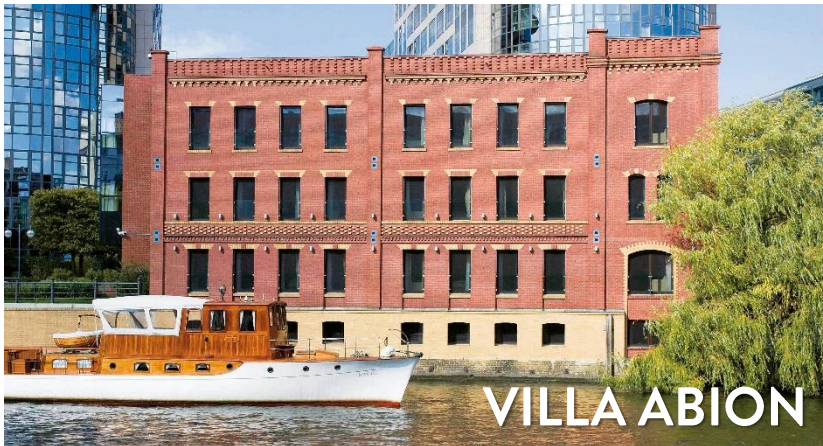
BERLIN  
VILLA ABION

Althoff Hotels

Althoff Hotels



- 224 double rooms at the 4-star hotel
- 137 Standard | 38 Superior Waterside | 35 Deluxe Maritim | 14 Maisonette Suites



- 19 rooms and suites at the 5-star villa
- 4 Maritim Rooms | 6 Executive Rooms | 3 Waterside Suites | 6 Salon Suites

# CATERING



**BOLLE'S KÖCHE**

GEKOCHTE EVENTKUNST



We would be happy to recommend our in-house caterer Bolle Köche. To discuss a first catering offer you can contact Corinna Kunger at [bolleskoeche@bolle-meierei.com](mailto:bolleskoeche@bolle-meierei.com).

There is no partner bond. In case of external catering, the costs for using the kitchen would be added.

# CONTACT

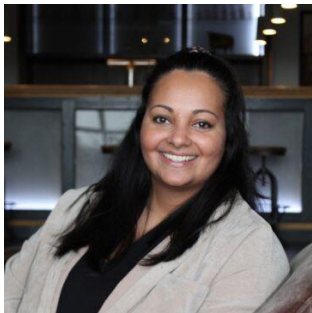
## **BOLLE Festsäle**

BT der EFA Gastronomie GmbH & Co. KG  
Alt-Moabit 98  
10559 Berlin

Fon +49 30 21480100

[info@bolle-meierei.com](mailto:info@bolle-meierei.com)

[www.bolle-meierei.com](http://www.bolle-meierei.com)



Sheila Ghaffar  
Head of Venue & Event

Tel: +49 30 2148010 12

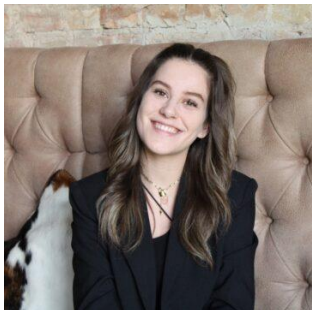
[ghaffar@bolle-meierei.com](mailto:ghaffar@bolle-meierei.com)



Jenny Küssner  
Venue Sales Manager

Tel: +49 30 2148010 13

[kuessner@bolle-meierei.com](mailto:kuessner@bolle-meierei.com)



Charline Marschall  
Junior Manager Venue & Event

Tel: +49 30 2148010 11

[marschall@bolle-meierei.com](mailto:marschall@bolle-meierei.com)