



COURTYARD®
BY MARRIOTT

Berlin City Center

MEETINGS & EVENTS

COURTYARD BY MARRIOTT®
BERLIN CITY CENTER

Axel-Springer-Strasse 55 | 10117 Berlin
T: +49 (0)30 800 9280 | F: +49 (0)30 800 928 1000
courtyardberlincitycenter.com





COURTYARD®
BY MARRIOTT

Berlin City Center

WELCOME TO BERLIN

Experience Berlin's multi-cultural charm at the Courtyard by Marriott Berlin City Center. Situated in the exhilarating Mitte district, between Potsdamer Platz and Alexanderplatz, our hotel inspires with its contemporary design concept and offers personalized service to its international clientele.

Only a short walk away you find some of Berlin's main attractions such as the famous Friedrichstrasse with the legendary Checkpoint Charlie, the Gendarmenmarkt, one of the most beautiful squares in Berlin, and the Nikolaiviertel with its small restaurants and cafés.

Discover Berlin's fascinating and exciting atmosphere and enjoy an extraordinary hotel concept full of comfort, elegance and colorful design.

HOTEL INFORMATION

Hotel opening:	June 2005
Number of floors:	6
Number of rooms:	267 (1 st - 6 th floor)
Conference rooms:	11 (renovated in 2016)
Non-smoking hotel	
Check-in:	3:00 PM
Check-out:	12:00 PM

ROOM CATEGORIES

Total room number:	267
Deluxe Room (26 sqm):	118 Twin 93 King 20 Queen
Superior Room (33 sqm):	21
Junior Suite (44 sqm):	6
Courtyard Suite (53 sqm):	4
Handicap-accessible:	20
Wheelchair-accessible:	5



COURTYARD®
BY MARRIOTT

Berlin City Center

INSPIRING EVENTS & CONFERENCES

Eleven meeting rooms as well as two spacious foyers, which are ideal for exhibitions and receptions, provide a modern and inspirational environment for successful events.

All meeting rooms are equipped with free Wi-Fi, air-conditioning, integrated sound systems, have daylight and can be fully darkened. Our function rooms allow you to work in a pleasant atmosphere and our friendly and courteous service team is happy to assist you with any requests you might have.

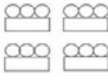


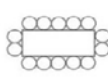



The largest conference room is "Berlin" with 267 sqm and a total capacity of 260 persons in theater style. Whether you are holding a conference, workshop or road show the meeting room "Berlin" together with its spacious foyer offers 460 sqm exclusive event space in which you can create memorable events for your guests.

OVERVIEW

Number of meeting rooms:	11
Foyer Berlin and the first floor foyer:	277 sqm
Total meeting space without foyer:	775 sqm
Total meeting space with foyers:	1052 sqm



CAPACITY CHART

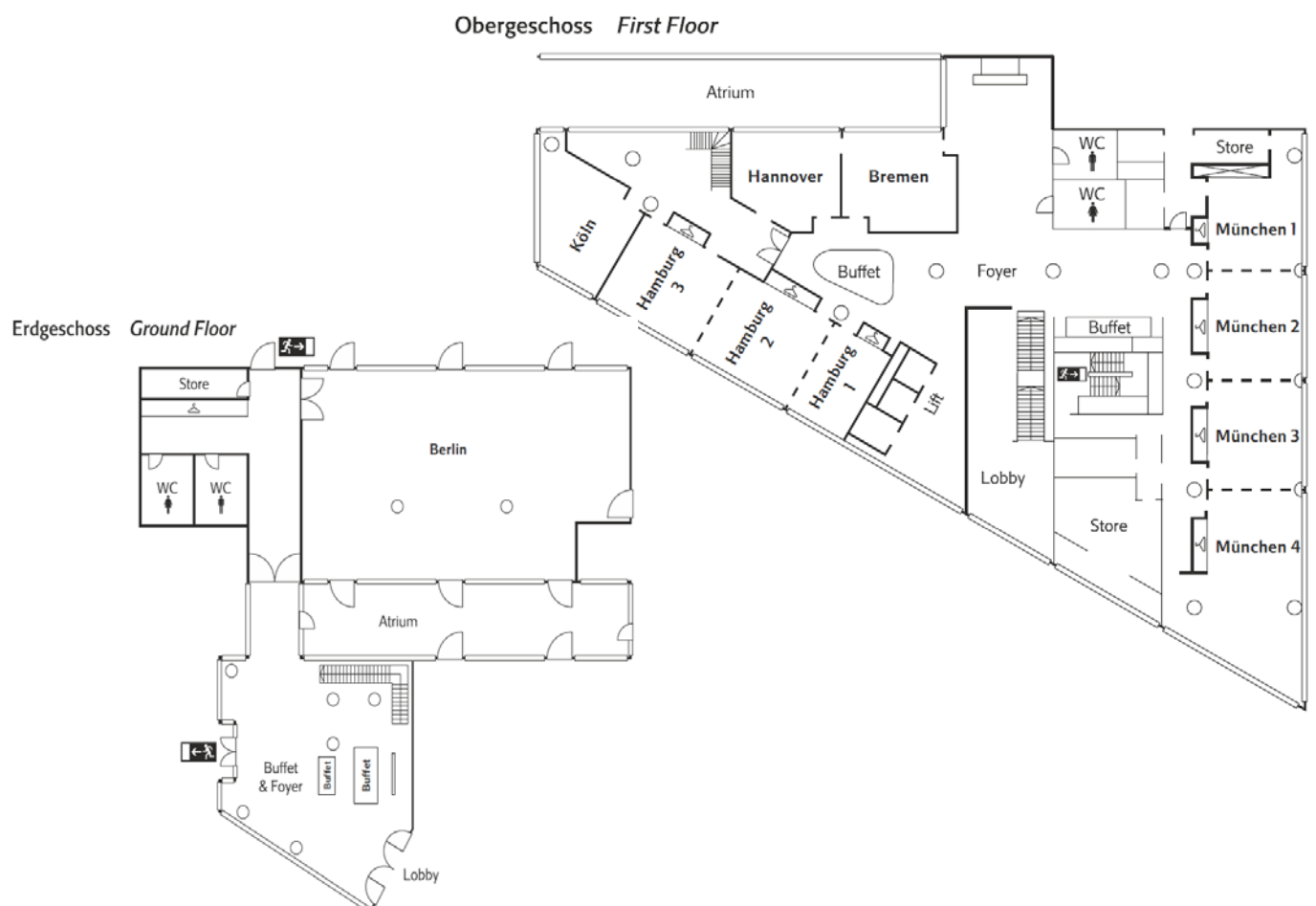
Room	Size in sqm	Measures L x W x H	 Classroom	 Theatre	 Bankett	 Boardroom	 U-Shape	 Crescent Rounds	 Circle of Chairs
München 1	45	6x6x3	15	25	16	14	---	12	13
München 2	52	7x6x3	25	36	24	16	18	18	18
München 3	52	7x6x3	25	36	24	16	18	18	18
München 4	98	12x8x3	40	70	48	26	36	30	36
München 1-2	102	13x6x3	40	65	48	26	30	30	30
München 1-3	154	20x6x3	68	100	64	50	54	54	56
München 1-4	252	32x6x3	110	180	128	72	82	90	79
München 2-3	104	14x6x3	50	72	64	32	36	36	36
München 2-4	202	26x6x3	98	140	112	64	72	78	70
München 3-4	150	19x6x3	68	105	80	44	48	54	50
Hamburg 1	31	4x7x3	---	18	8	12	---	---	12
Hamburg 2	52	7x7x3	25	36	24	16	18	18	18
Hamburg 3	52	7x7x3	25	36	24	16	18	18	19
Hamburg 1-2	83	11x7x3	40	55	40	26	30	30	30
Hamburg 1-3	135	18x7x3	68	100	72	50	54	54	54
Hamburg 2-3	104	14x7x3	50	72	64	32	36	36	40
Bremen	50	8x6x3	21	36	24	16	18	18	20
Hannover	44	8x5x3	21	32	24	16	18	18	20
Köln	50	2x6x3	---	---	---	12	---	---	---
Berlin	267	22x12x3.7	150	260	120	---	45	90	55



COURTYARD
BY MARRIOTT

Berlin City Center

FLOOR PLAN OF CONFERENCE AREA





COURTYARD®
BY MARRIOTT

Berlin City Center

EVERYTHING YOU NEED IN ONE PACKAGE

MEETING PACKAGE*

- Conference room (according to the number of participants)
- Technical equipment (projecor, screen, flipchart)
- Free Wi-Fi in conference area
- Tea, coffee, natural flavored water and candy station in foyer (available one hour prior to the meeting until the end of the meeting)
- Two coffee breaks including tea, coffee, a rich selection of snacks, fruits and pastries (one in the morning, one in the afternoon)
- Lunch buffet or 3 course menu at chef's choice
- Unlimited water and apple juice in conference room and with lunch

PRICES

Full day: € 81.00 per person

Half day: € 73.00 per person

Please ask about special conditions for weekends and the low season.

*Bookable from 10 people. For groups of less than 10 people, food and beverages will be charged according to consumption.



COURTYARD®
BY MARRIOTT

Berlin City Center

CREATING SUCCESSFULL EVENTS

Make the most of your meeting or event with Marriott Bonvoy™ Events.

MARRIOTT BONVOY™ EVENTS

Earn Marriott Bonvoy™ points for eligible meetings and events you plan at any of Marriott's participating brands' hotels and resorts.* Then redeem the points you have earned for Free Night Awards at 7,000+ Marriott Bonvoy hotels around the world, with more than 40 airline partners, once-in-a-life-time experiences with Marriott Bonvoy™ Moments and more.

Learn more about Marriott Bonvoy™ Events and enroll at
marriottbonvoy.com/events

*These brands do not participate in Marriott Bonvoy™ Events: Marriott Executive Apartments®, Residence Inn®, TownePlace Suites®, Design Hotels™, Bulgari Hotels & Resorts, The Ritz-Carlton Reserve® and Vistana properties.

courtyardberlincitycenter.com



COURTYARD®
BY MARRIOTT

Berlin City Center

ROOMS DESIGNED WITH YOU IN MIND

ROOM FACILITIES

King bed: 1.80 m x 2 m
Queen bed: 1.60 m x 2 m
Twin bed: 1.20 m x 2 m

All rooms are equipped with an air-conditioning, flatscreen TV, ironing station, a telephone, hair dryer, mini-fridge, coffee and tea making facilities, Wi-Fi and a safe in laptop size.

CHILDREN

Baby beds are free of charge and available upon request. Starting from the Superior category, all rooms have a sofa bed which can be used free of charge for children up to 12 years of age.

INTERNET

Wireless internet is available throughout the hotel and free of charge.

PARKING

Total parking spaces: 90
Cost per hour: € 2.50
Cost per day: € 23.00
Height of garage: 2.10 m

SERVICE

- Business Center in lobby
- 24 hour shop "The Market"
- Pressreader - digital newspaper & magazines
- Laundry service



COURTYARD®
BY MARRIOTT

Berlin City Center

CULINARY DINING AT COURTYARD BERLIN

KITCHEN & BAR AT COURTYARD

Our restaurant and bar seats up to 170 people and offers a delightful international cuisine as well as regional classics.

Opening hours

Breakfast

Monday - Friday 7:00 am - 10:00 am

Weekend & Holidays 7:00 am - 11:00 am

Dinner 5:00 pm - 10:00 pm

Bar 5:00 pm - 11:00 pm

Breakfast buffet

Full breakfast buffet: € 18.50

Prices for children

Children until 6 years: free of charge

From 7 till 12 years: 50%

From 13 years: 100%

Accepted credit cards: VISA, American Express, MasterCard, Diners Club, JCB

#HASHTAG COFFEESHOP

Our coffeeshop #HASHTAG is the new hotspot in Berlin's city center for hot coffee and cool drinks. Discover the city's specialties in a modern way like our baked potatoes in currywurst or chili style or any other dish from our creative, daily changing menu. You can also book the #HASHTAG as your event location.

THE MARKET

Our 24 hour shop The Market offers drinks, small snacks, souvenirs and selected articles for daily needs at moderate prices.



COURTYARD®
BY MARRIOTT

Berlin City Center

SIGHTS IN THE NEIGHBOURHOOD

Alexanderplatz is the most famous square in Berlin. Here you find the renowned clock, which displays the current time in different countries around the world, and the "Fountain of Peoples' Friendship", which was built in 1969. You can reach Alexanderplatz either on foot or by taking the underground (U2) starting at the station "Spittelmarkt", located in close proximity to our hotel.

Checkpoint Charlie on the legendary Friedrichstrasse is only a ten minutes walk from our hotel. Opposite of the famous former border crossing is the "Wall Museum" which is open from 9:00 am till 10:00 pm on a daily basis.

Friedrichstrasse is one of Berlin's popular shopping areas with the famous Gallery Lafayette and is only a five minute walk away from our hotel.

Gendarmenmarkt is one of Europe's most beautiful squares. Here you can find the German Dome, the French Dome and the Concert hall an architecturally harmonic and stunning ensemble. The Gendarmenmarkt is also located only a ten minutes walk from our hotel.

Potsdamer Platz is the center of the contemporary Berlin with a wide range of restaurants, shops, theatres and cinemas. The famous square does not only attract tourists but also many locals. Potsdamer Platz is easily accessible with the underground (U2) within a few minutes. Potsdamer Platz also includes magnificent architecture.

Nikolaiviertel is one of Berlin's most famous attractions. The district locates a variety of bars and restaurants which are located in medieval, cobble-stone alleys. Also it situates the Nikolai church, Ephraim Palace and the museum "Knoblauchhaus" that rank among the city's most well-known sights. The Nikolaiviertel is within walking distance from our hotel.