



HELIX
HUB



Are you looking for an office or a venue in the heart of Berlin? In the immediate vicinity of the Federal Ministry of Health, the Charité and other important healthcare players?

What if you were also part of a community of healthcare and life science innovators? In a modern building with an “all-round carefree package” from lunch to laundry service?

The HELIX HUB offers you just that: a community of innovators, entrepreneurs, start-ups and industry leaders in healthcare and life sciences. The HELIX HUB is an event location, office building and co-working space - a place where like-minded people can meet and inspire each other.
See for yourself.

HELIX HUB

The innovation space for **HE**althcare and **LI**fe **X**iences!

TABLE OF CONTENTS

PAGE	05	Our Mission
PAGE	06	Our Community
PAGE	11	What We Offer
PAGE	13	Furnished Office Spaces
PAGE	19	Meeting Rooms
PAGE	25	Conference Spaces
PAGE	31	Services
PAGE	37	HELIX Team
PAGE	39	Members
PAGE	43	BERLIN - The Capital Of Choices



JULIANA DIERKS
Managing Partner

Our Mission

We want to bring new solutions to patients. And we want to do it with you: innovators, entrepreneurs, startups and industry leaders in Life Sciences, MedTech and Healthcare.

That's why we built HELIX HUB, a perfect vessel to merge disciplines, creativity, knowledge, enthusiasm, and a pioneering spirit into something greater: progress that benefits humanity.

**"A unique concept
in the heart of Berlin."**

Happy to guide you around,

Juliana Dierks

OUR COMMUNITY

The heart of HELIX HUB is our community. Here we bring together innovative firms and associations in healthcare and life sciences that include a network of 330 companies and 200 laboratories. Become a member of this community and network with innovation leaders from business, politics and science. Meet with like-minded people in an inspiring environment, work concentrated in fully furnished individual offices, or participate in our lectures and events.



INSPIRATION

Innovation needs inspiration. That's why we attach great value to architecture, design and lighting. But first of all we created a place where people can meet and inspire each other in a feel-at-home ambience.



FLEXIBILITY

Mix and mingle or close the door and concentrate: benefit from flexible offices, conference rooms and state-of-the-art technology. Enter the stage or enjoy privacy, just as you need.



COMMUNITY

Meet decision-makers and visionaries, network with like-minded people and independent thinkers, contact and move forward with innovators from around the world.

Community area LOUNGE



The community area is the heart of the HELIX HUB, the place where you can relax, socialize, connect and meet like-minded people. It is equipped with soundproof phone pods, short-term work space, a lounge, a library with a fireplace, and a courtyard.

Main floor lounge and outdoor space

FLOOR PLAN



- / welcoming area & front desk service
- / working and networking space in the lounge
- / kitchen pantry
- / private telephone booths
- / outdoor space



Community area **LIBRARY & THE HELIX COURTYARD**



Our library is both representative and cosy. So it is the perfect place to retreat, or mingle in a pleasant atmosphere or to play a round of chess by the fireplace in the evening.



In our HELIX Courtyard you can meet with colleagues, have lunch together or just gather new strength with a few rays of sunshine. It's also the perfect place to barbecue on warm summer evenings, celebrate a summer party or get together for an after-work event.



What We OFFER

HELIX HUB is made to give you the best possible conditions to spark innovation: new forms of collaboration that are as agile and manifold as the opportunities you will find here. There are many different options, from virtual or temporary offices to complete office wings to spacious meeting, conference and event venues.



FURNISHED OFFICE SPACES

- / fully operational
- / temporary or permanent
- / next door to other innovators



MEETING ROOMS

- / soundproof meeting rooms up to 26 participants ([corona conform 12](#))
- / digital whiteboards
- / speedy and reliable Wi-Fi up to 100 MBit/s
- / video + telephone conferencing solution



INNOVATION LAB

- / exclusive project space
- / furnished and equipped
- / flexible and adjustable setup based on your needs
- / privacy
- / minimum rental 1 week

THE HELIX STRUCTURE

We are convinced that progress and innovation can only be advanced together. That's why we want people to meet and exchange ideas at the HELIX HUB. Our innovative building concept supports this idea. For example, the individual floors are equipped differently - on one floor there is a kitchen pantry and on the other the restrooms. The ground floor is a combined reception area and community zone and invites you to relax and network.

			
800 m²	106	7	1
CONFERENCE SPACES	WORKSPACES	MEETING ROOMS	COMMUNITY



CONFERENCE SPACES

- / 120 m² to hold a conference, plan an event or celebrate
- / for up to 90 participants (**corona conform 50**)
- / adjustable room layouts
- / on-site catering
- / additional meeting rooms available



VIRTUAL OFFICE

- / postal address
- / mail forwarding
- / phone answering service



Furnished Office Spaces 3rd FLOOR



If you need fully operational, bright and attractively furnished offices, take your place - temporary or permanent and next door to other innovators.

Available office spaces on the 3rd floor

FLOOR PLAN



- / 13 fully furnished office spaces
 - / adjustable tables and chairs
 - / cupboard
 - / trolley
 - / whiteboard
- / 8 work desks
- / collaboration corner

Fully furnished office spaces equipped with all the features you need. With the adjustable chairs and tables, you have all the flexibility to arrange the space in the way it fits your style.

The layout of the work desks in the middle can be customized based on your needs.



Furnished Office Spaces 4th FLOOR



Find peace and quiet to concentrated work in your light-flooded office with adjustable desk, whiteboard and floor-to-ceiling windows.

Available office spaces on the 4th floor

FLOOR PLAN



- / 12 fully furnished office spaces
 - / adjustable tables and chairs
 - / cupboard
 - / trolley
 - / whiteboard
- / 12 work desks
- / fully equipped pantry
 - / coffee machine, dish wascher
 - / cutlery, plates, cups
 - / fridge
- / meeting area
- / collaboration corner

Store your belongings in a personal locker. Relax on the comfortable sofas in the middle of attractive green plants or have a coffee together with like-minded people.



Furnished Office Spaces **MORE INSIGHTS**



The HELIX HUB is equipped with kitchen pantries. They have all the features that you might need for your everyday life, and more: coffee machine, dishwasher, fridge, cutlery, plates and cups for any case.



Meeting & collaboration area



Personal locker

Meeting rooms "WATSON & CRICK"



Room for max. 26 participants (**corona conform up to 12**), 75" electronic whiteboard with touch screen, 65" electronic whiteboard with touch screen and a video + telephone conferencing solution.

i James Watson & Francis Crick are the two scientists responsible for discovering the double helix.

**Up to date with the recent Corona hygiene rules. More info at www.helix.life/corona*

1st floor:

FLOOR PLAN



- / 5 fully equipped meeting rooms
- / private terrace
- / pantry for breaks and refreshment
- / restrooms

For intense work sessions or compelling investor presentations book one of our elegant meeting rooms up to 26 participants (**corona conform up to 12**), fully equipped with state-of-the-art technology.

The large meeting room, “WATSON & CRICK”, can be used for big meetings, or upon request, can be split into 2 small meeting rooms.

Meeting Room Booking

Whenever you want to hold a presentation, have a video conference or need to meet an important client, you can easily book a meeting room by using our app.

CORONA CONFORM*

Meeting rooms "FRANKLIN"



Room for max. 8 participants (corona conform 6), 55" electronic whiteboard with touch screen and a video + telephone conferencing solution.

i Rosalind Franklin: Her distributions lead to an advanced understanding of the DNA's structure.

**Up to date with the recent Corona hygiene rules. More info at www.helix.life/corona*



Terrace

Conference spaces INNOVATION LAB

Explore groundbreaking tech and new ways to meet in the futuristic innovation lab.

Description:

The innovation lab is an exclusive project space, completely furnished and equipped. The layout is flexible and can be easily adjusted based on your needs. Ideal for longer projects, where you and your team can privately work and focus without being disturbed. Minimum rental of the Innovation Lab is 1 week.

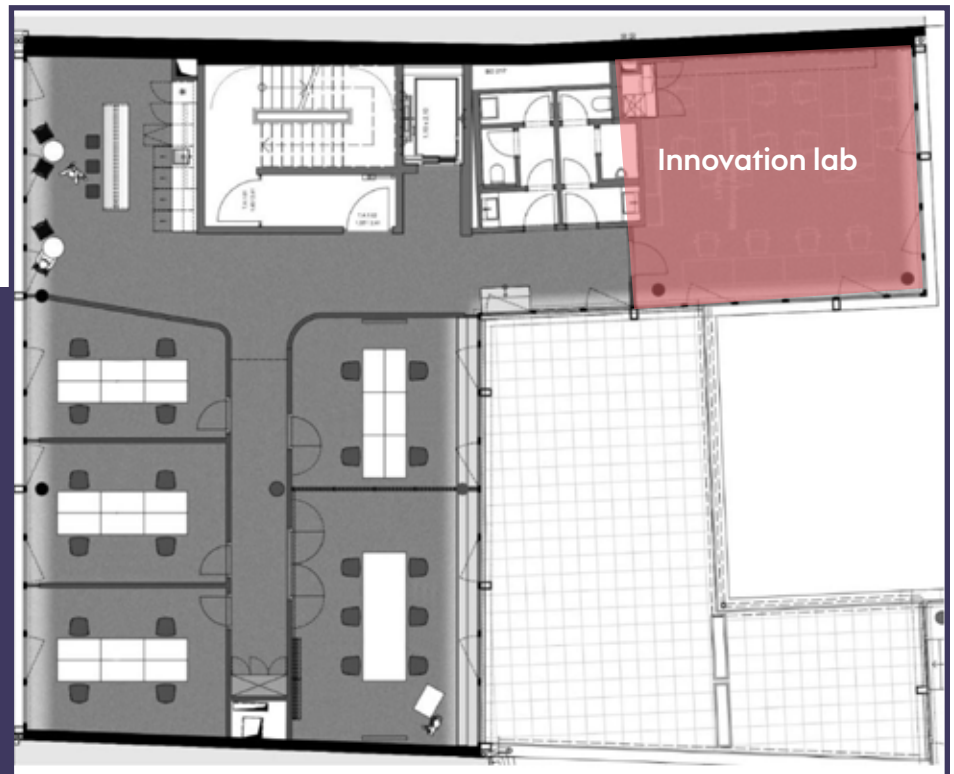
- / exclusive project space
- / furnished and equipped
- / flexible and adjustable setup
- / privacy
- / minimum rental 1 week



**Up to date with the recent Corona hygiene rules. More info at www.helix.life/corona*

1st floor

FLOOR PLAN



Conference spaces "IKIGAI"



Whether you celebrate a breakthrough innovation, hold a conference or plan an industry event, use our spacious venue for up to 90 participants (**corona conform 50 participants**), with on-site catering and optional additional meeting rooms.

i *Ikigai*: This is Japanese for the intersection between - you love what you do + you do what you are good at + what the world needs.

**Up to date with the recent Corona hygiene rules. More info at www.helix.life/corona*

- 1 Underground floor:

FLOOR PLAN



- / 120 m² to hold a conference, plan an event or celebrate
- / for up to 90 participants (corona conform 50 participants)
- / adjustable room layouts
- / on-site catering
- / additional meeting rooms available
- / pantry for breaks, refreshments and catering
- / restrooms



Conference spaces "KOMOREBI"



The smaller conference space, called "KOMOREBI", is suitable for more private events, where intimacy plays a major role. The Japanese garden and the natural light that fills the entire space ensures the perfect atmosphere.






i Komorebi refers to the sunlight shining through the leaves of trees, creating a sort of dance between the light and the leaves.

**Up to date with the recent Corona hygiene rules. More info at www.helix.life/corona*



It is equipped with adjustable and flexible chairs. These chairs can handle your devices (E.g. store your laptop under the table, stack your phone or tablet on the top), your drink, and are perfect for a long conference.

Summary of SPACES

CATEGORY	ROOM	SIZE	CORONA CONFORM	BLOCK	U-SHAPE	THEATRE	CLASS-ROOM	CIRCLE
								
OFFICE SPACES	FURNISHED OFFICES	12,0 m ²	-	-	-	-	-	-
MEETING ROOMS	WATSON & CRICK	36,3 m ²	12	26	25	-	-	-
	WATSON	24,4 m ²	6	12	11	-	-	-
	CRICK	11,9 m ²	6	8	7	-	-	-
	PAULING	21,7 m ²	6	8	7	-	-	-
	FRANKLIN	23,2 m ²	6	8	7	-	-	-
	WILKINS	19,4 m ²	6	6	5	-	-	-
CONFERENCE SPACES	INNOVATION LAB	53,4 m ²	12	20	16	32	16	26
	IKIGAI	120,0 m ²	50	36	38	100	50	42
	KOMOREBI	39,5 m ²	6	16	12	18	12	20
	COMMUNITY AREA	270,0 m ²	-	-	-	-	-	-
	LIBRARY	40,0 m ²	-	-	-	-	-	-
	HELIX GARDEN	140,0 m ²	-	-	-	-	-	-
	TERRACE	80,0 m ²	-	-	-	-	-	-



Furnished Office Spaces



Meeting Rooms



Conference Spaces

Services

FRONT DESK MANAGEMENT

The small things such as deliveries, mailing or printing can become annoying and frustrating sometimes and can distract your attention from the work you want to concentrate on.

Here in the HELIX HUB, we make sure that everything is running smoothly, you don't have to deal with such tasks and can focus on your work with your full attention.



Dry Cleaning Service

We are happy to offer the dry cleaning service to our members here in HELIX HUB. Collect your clothes in the given laundry bag and we take care of the rest. Laundry bags are picked up every Monday and sent for cleaning. Members can take the freshly cleaned clothes every Thursday from the front desk.



Printing

Print and scan from anywhere, scan to e-mail and make copies by using our advanced printer, that will fulfill all your needs when it comes to printing. The printer is located on the ground floor where everyone can easily access.



Visitor Management

Throughout our visitor management system, you can easily sign in your guests. No paperwork required, signing them in it's easily and quickly done via our digital interface at the front desk.



SPEEDY & RELIABLE INTERNET



Wi-Fi:

The members of HELIX HUB can connect with their business devices to the "HELIX Community" network. Guests and private devices can use the "HELIX Guest" network, which is easily accessible to all of our guests.

Local Network:

Each floor has its own network with a fast internet connection, which is separated from each other. Within each floor, members can also access their printer devices and the print station on the ground floor too.



Mailing & Delivery

We offer mailing and delivery service at the front desk. We manage and take care of all the mails and packages that arrive in HELIX HUB to our members. We notify you whenever a new delivery arrives and also help to send out packages if needed.



Preferred Rate Hotels

Our members have the possibility to rent rooms in the Hotel i31 - located the opposite side of the HELIX HUB - or in Mercure Hotel Berlin City for a discounted price. Rooms can be rented also for personal use for friends and family.



Mini Appetizers



As a daily greeting from the HELIX Team, we serve appetizers on the ground floor every day at 9:30 am in the morning and 2:30 pm in the afternoon. All these goodies are freshly baked in the HELIX kitchen in order to make your day and give you a boost in your everyday work.

Use this opportunity to meet others, network with like-minded people, build your connections and enjoy your time as a part of the HELIX Community.



Sparkling Water

Here in HELIX HUB, we put great emphasis on the water quality. At the kitchen pantries, we provide quality, cold and filtered water from the faucet.

Furthermore, you can have sparkling water too! Choose from still water, medium sparkling and sparkling.



The Online Canteen

We found the best virtual canteen that delivers delicious lunches to us so that you, the member of the HELIX HUB, can enjoy your breaks to the fullest.

Have your lunch break in this beautiful environment and benefit from the flexibility of choosing from a huge variety of food delivered from the best restaurants in Berlin.

“Basically, it's like eating out in a different part of the city every day.”



Fun Time BBQ

Christian Dierks @ the barbeque:

“Preparing food on an open fire is not the ultimate innovation. But somehow this archaic method brings people together, makes them gather around the fire, enjoy the smell and taste and be in good company!”

We favor special preparations for meat, fish and vegetables – to suit everybody’s palate.”

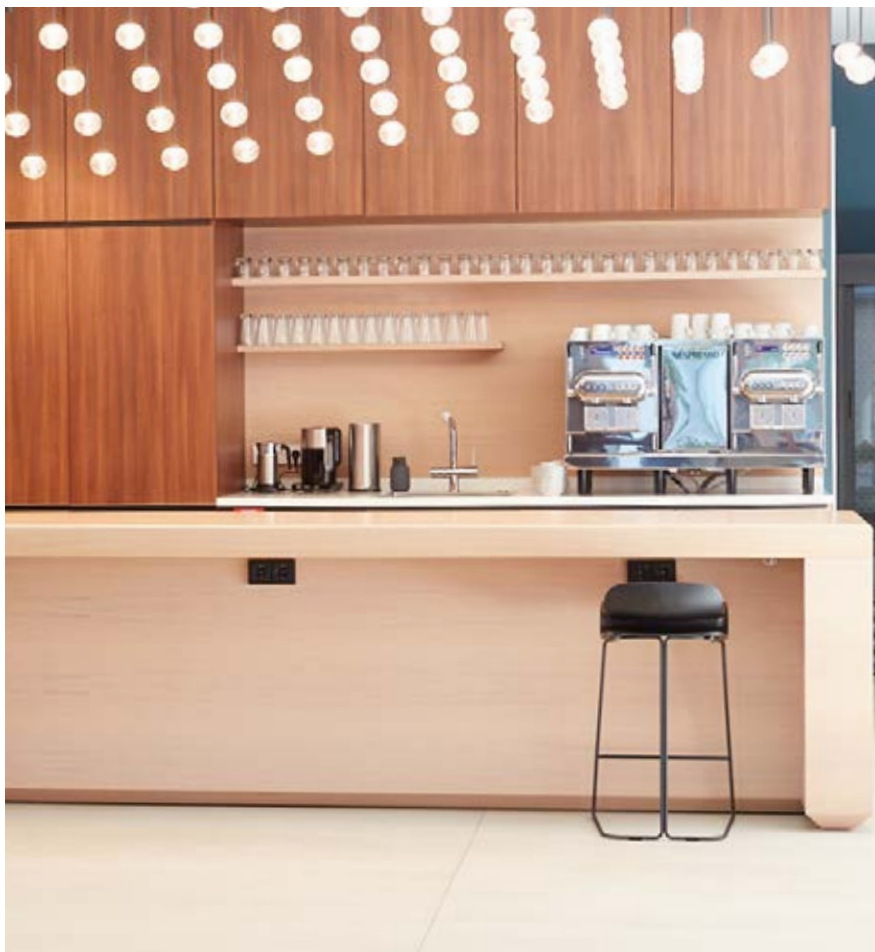


On special occasions, Christian Dierks opens this lid. Anyone who has ever been there when he’s standing at the grill will definitely come back. His barbecue food is legendary. Vegetables, fish and even meat are grilled. With a good glass of wine and in a nice company we let the day end together and sometimes even forget the time. So if you get an invitation to the barbecue, you better not wait too long!



COFFEE & TEA

Those who work hard deserve a break that they can fully enjoy. For the special pleasure we offer you premium coffee from Nespresso and high-quality organic tea, which will put a smile on your face.



NESPRESSO Machine

The perfect place to network:
Usually, the kitchen is the meeting point of the party. For us it is the large Nespresso coffee machine on the ground floor. So whenever you want to meet others: Come down and enjoy your coffee in stimulating company.

WE ARE HERE FOR YOU

How can we make your day when you walk through our doors?

That is what makes us tick, that is how we want to share our home with you, and that is why we make a difference to your every day when you are showing up to do your job. We feel privileged to:



INSPIRE YOU

We genuinely care about you and are enthusiastic to earn your trust and to create a positive and inspiring place for you to make a difference in patients' lives.



CONNECT YOU

We invite you to be part of our community - join a passionate, powerful, and experienced ecosystem to drive innovation in healthcare...together!



ENABLE YOU

We believe in the importance of your work and want to ensure that you have everything at your fingertips that you might need to succeed.

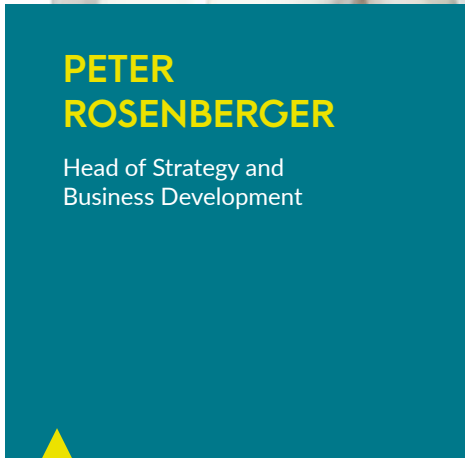
The HELIX HUB TEAM



**JULIANA
DIERKS**
Managing Partner



**NADINE
BAROWNICK**
Front Desk Manager



**PETER
ROSENBERGER**
Head of Strategy and
Business Development



**SILVIA
RICHTER-ROSE**
Hospitality Manager



JOIN THE COMMUNITY OF INNOVATORS

Our MEMBERS

HELIX HUB is home to these great companies:



ALM

ALM e.V. (Association of Accredited Medical Laboratories) represents the interests of the accredited medical laboratories in Germany. The association counts 200 labs as its members with 900 medical specialists, 500 scientists and about 25.000 qualified staff. The purpose of ALM e.v. is promoting and insuring a high-standard laboratory assessment in Germany.

BITMARCK

As a managed service provider for the IT market of statutory health insurance, BITMARCK furthers digitalization of this sector as well as innovative solutions and services for its customers. 85 percent of all German, statutory health insurances are customers of BITMARCK, more than 20 million insured persons benefit from our IT-services.

DIERKS+COMPANY

Dierks+Company is an innovation consultancy focused on healthcare and life sciences. Uniting our legal and medical expertise with actionable strategies and implementation support, we navigate our clients in developing and establishing novel and integrated solutions at the intersection of drugs, devices, diagnostics and data.

INA BEISSNER

Ina Beissner designs captivating jewelry and graceful, feminine pieces for modern, elegant women. In 2010, she launched her eponymous jewelry label INA BEISSNER in Berlin, presenting her first collection in the German and French capitals in 2011. Her cross-cultural designs juxtapose northern European minimalism with Latin American influences to create intriguing shapes that exude filigree finesse.

KUNSTSTOFF-INSTITUT LÜDENSCHIED

Certified in accordance with ISO 9001 and with accredited testing laboratory under ISO/IEC 17025 – provides comprehensive support in the selection, development, optimization and implementation of products, tools and processes in all sectors of the entire plastics technology.

MC SERVICES

MC Services is an international Public Relations and Investor Relations firm specializing in communications for the Life Sciences sector. A strong team of science, finance, media and communications experts with extensive industry experience positions MC Services as a leading Life Sciences agency in Europe.



MEDTRONIC

Medtronic is a global healthcare solutions company operating in approximately 160 countries. They are committed to improving lives through their medical technologies, services, and solutions. Their Mission: to alleviate pain, restore health, and extend life for people around the world.



QD LASER

A pioneer in the commercialization of quantum dot laser technology, QD Laser Co., Inc. was launched in 2006 as a spin-off venture of Fujitsu Laboratories Ltd. The company delivers new semiconductor laser-based solutions to customers in a broad range of fields, including telecommunications, manufacturing, medicine and consumer products.



RISE - RESEARCH INDUSTRIAL SYSTEMS ENGINEERING

RISE is an internationally established and recognized IT R&D provider with experience in planning, IT architecture, IT infrastructure, IT strategy and security technology in critical environments. RISE offers both outstanding consultancy and research & development services in the information technology sector on the international top level.



ROCHE

Roche is a global pioneer in pharmaceuticals and diagnostics focused on advancing science to improve people's lives. The combined strengths of pharmaceuticals and diagnostics under one roof have made Roche the leader in personalised healthcare – a strategy that aims to fit the right treatment to each patient in the best way possible.



RoX HEALTH

RoX Health's goal is to transfer Roche's own digital healthcare solutions as well as the solutions of start-ups from the healthcare sector in Germany to standard care. It is particularly noteworthy that, in addition to therapy, the focus is also on disease prevention. The division is headed and managed by Dr. Robert Schnitzler, who is also a member of the Executive Committee of Roche Pharma AG.



SPRIKER

Spryker is the commerce technology company offering a unique commerce operating system, as well as a wide range of corresponding customer interfaces (apps) which enable companies to harness the full potential of their products and services by connecting them to various customer touchpoints and creating forward-looking customer centric and IoT use cases, responding to increasing device variety and user journey complexity.



Our Members ABOUT HELIX HUB



**Dipl.-Ing.
Thomas Eulenstein**

Kunststoff-Institut Lüdenscheld GmbH

“ With the HELIX HUB we have found a place that exactly meets our requirements - thematically, strategically and also regarding the equipment. It offers us not only premises for educational events and project meetings, but also an innovative environment and a lively healthcare and life sciences community.”



**Hironori
Miyauchi**

QD Laser, Inc.

“ The HELIX HUB is not just an office building. It offers me so much more: Here I can meet many talented people from Dierks+Company and from the big network around the HELIX HUB.”



**Prof. Dr.
Hagen Pfundner**

Roche Pharma AG

“ We were looking for quite some time to find a place in Berlin that is different - a working environment that stimulates co-operation, co-creation and open exchange. Simply a hassle-free environment that makes our people happy to come to work and an inspiring place to meet with partners, stakeholders, and customers. We found it!”



**Cornelia
Wanke**

ALM Service GmbH

“ Connecting people, building bridges, creating integrated concepts for the healthcare system of tomorrow - these are my principles of work - and all that is possible in the HELIX HUB, where work really flows and ideas can grow...”

REFERENCES



**Prof. Dr. med. Dr. iur.
Christian Dierks**

Dierks+Company

“ At the HELIX HUB innovative companies in healthcare and life sciences get the opportunity to cooperate - whether in individual offices, in the open workspace or in the large conference hall. The network concept is the most amazing asset of this building. It creates a balanced mix so that companies can work together in creativity and inspiration without competitive situations.”

Berlin

THE CAPITAL OF CHOICES

IN BERLIN

NR.1 Do you need to be convinced that Berlin is a great place to live and work? Probably not.

Germany's capital is firmly established as a hotspot for both, life sciences and life quality. Here you can indulge in the rich, diverse culture of this vibrant yet soothingly green city. And you will benefit from outstanding networking opportunities with innovators, regulators and decision-makers. You will find them throughout the city: at academic and scientific hotspots, in the startup scene, in government agencies and health organizations – or directly in the HELIX HUB.



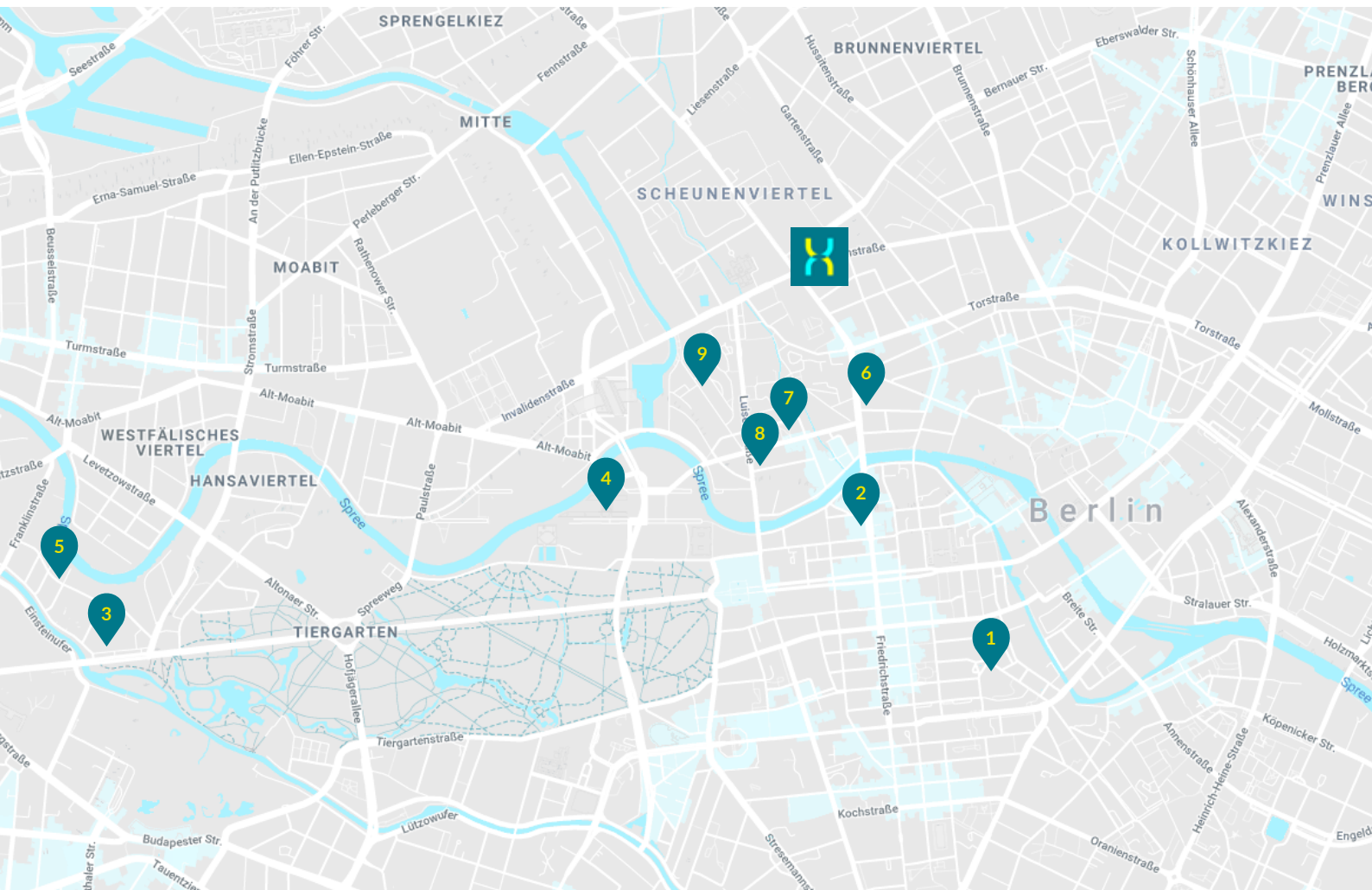
Berlin Healthcare Industries:

300 Medical Technology Companies
30 Pharmaceutical Companies
240 Biotech Companies
130 Hospitals
9 Life Science Parks



Germany's political and regulatory center

Meet Germany's political and regulatory center



- 1 Association of research-based Pharmaceutical Companies (VFA)
- 2 Association of the Pharmaceutical Industry (BPI)
- 3 Drug Commission of the German Medical Association (AKDAE)
- 4 Federal Chancellery
- 5 Federal Joint Committee (G-BA)

- 6 Federal Ministry of Health
- 7 National Association of Statutory Health Insurance Funds
- 8 The German Medical Technology Association (BVMed)
- 9 University Clinic Charité
-  HELIX HUB

Public Transportation IN THE MIDDLE OF BERLIN



The HELIX HUB is not only close to the major players and institutions in healthcare and life sciences, but it is also located at the most attractive heart of Berlin

The public transportation is very close and easy to access:

- / **Underground (U-Bahn)**
 - Naturkundemuseum: 100 m, 1 min by foot
- / **Train (S-Bahn)**
 - Nordbahnhof: 300m, 4 min by foot
 - Friedrichstrasse: 3 min with Underground
 - Berlin Central Station: 6 min with Tram
- / **Tram lines**
 - M8, M10, M12

Parking

Car

Upon request, we can provide car parking slots to our members. The underground parking house is located next to the HELIX HUB.

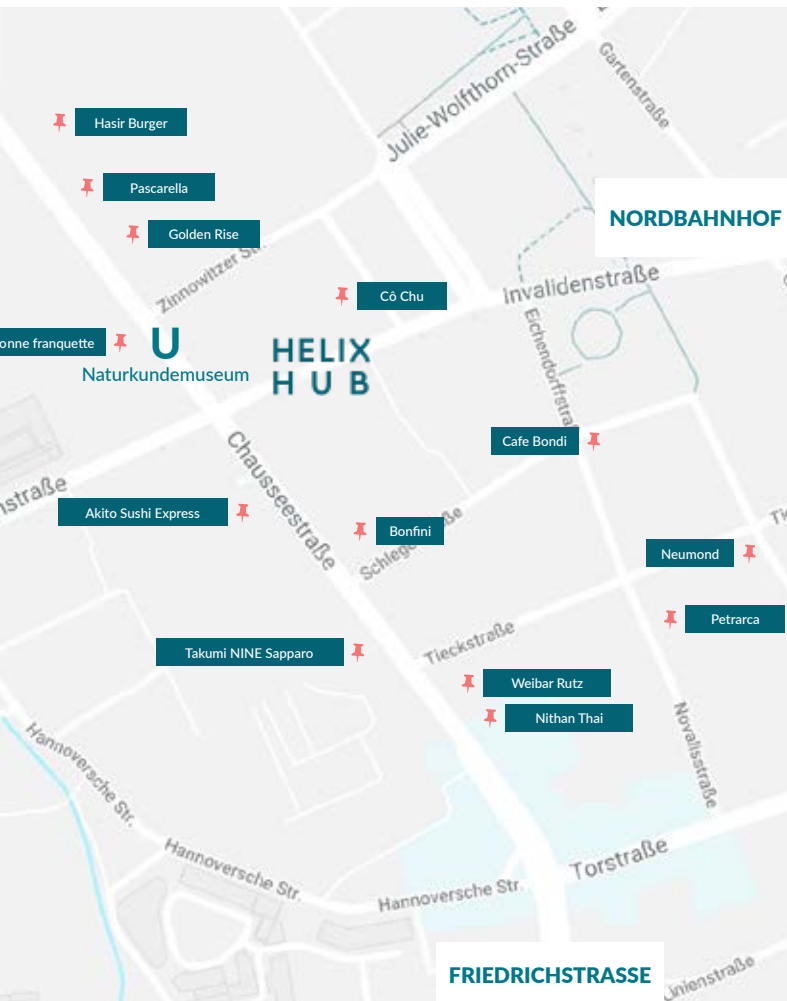
Bicycle

In the same parking house, we have a bicycle parking rack. Members arriving by bike can safely park and lock their bike for the day.



Berlin

RESTAURANTS NEAR HELIX HUB



You find HELIX HUB at the intersection of Invalidenstraße and Chausseestraße, where you can select from many different options if you want to go out for lunch. Here are our picks of the best restaurants close by, within walking distance:

- / Akito Sushi Express - Sushi restaurant
- / BRASSERIE la bonne franquette - French restaurant
- / Bonfini - Italian restaurant
- / Cofe Bondi - Cafe
- / Cô Chu - Vietnamese restaurant
- / Golden Rice - Vietnamese restaurant
- / Hasir Burger - Turkish restaurant
- / Neumond - German restaurant
- / Nithan Thai - Thai restaurant
- / Pascarella - Italian restaurant
- / Petrarca - Italian restaurant
- / REINHARD BÄR - Restaurant & Cafe
- / Restaurant im Hamburger Bahnhof - German restaurant
- / Takumi NINE Sapporo - Japanese restaurant
- / Weinbar Rutz - German restaurant





CALL US

+49 30 516 959-500

E-MAIL US

info@helix.life

VISIT US

Invalidenstr. 113,
10115 Berlin

FOLLOW US

 [linkedin.com/company/helixhub](https://www.linkedin.com/company/helixhub)
 [instagram.com/helix_hub](https://www.instagram.com/helix_hub)