

| Raumname | Theatre | Parliament | Reception | Banquett 10 Pax | Board Room | U Shape | Size (sq ft) | Length (ft) | Width (ft) | Height (ft) | Floor |
|-------------------------|---------|------------|-----------|-----------------|------------|---------|--------------|-------------|------------|-------------|-------|
| Bellevue | 260 | 150 | 260 | 200 | 51 | 51 | 2368 | 52,5 | 42 | 13 | GF |
| Bishop | 45 | 30 | 50 | 24 | 24 | 24 | 646 | 32 | 21 | 7,8 | 2 |
| Charlottenburg I/II/III | 400 | 250 | 400 | 280 | 72 | 78 | 3821 | 78,7 | 46 | 9,8 | GF |
| Charlottenburg I | 100 | 60 | 100 | 60 | 33 | 42 | 1270 | 26 | 46 | 9,8 | GF |
| Charlottenburg I/II | 250 | 140 | 250 | 150 | 50 | 48 | 2562 | 55,7 | 46 | 9,8 | GF |
| Charlottenburg II | 100 | 60 | 100 | 60 | 33 | 42 | 1270 | 26 | 46 | 9,8 | GF |
| Charlottenburg II/III | 250 | 140 | 250 | 150 | 50 | 57 | 2530 | 52,5 | 46 | 9,8 | GF |
| Charlottenburg III | 100 | 60 | 100 | 60 | 33 | 42 | 1237 | 26 | 46 | 9,8 | GF |
| Check! | 80 | 50 | 80 | 60 | 36 | 32 | 947 | 46 | 19 | 7,8 | 2 |
| Chess | 45 | 30 | 50 | 24 | 24 | 24 | 646 | 32 | 21 | 7,8 | 2 |
| Dahlem | — | — | — | — | 12 | 12 | 441 | 16 | 26 | 9,8 | GF |
| Fontane | 20 | 12 | 20 | 12 | 10 | 9 | 291 | 16 | 19 | 9,8 | I |
| Glienicke | — | — | — | — | 14/18 | — | 570 | 19 | 33 | 9,8 | GF |
| Hugos 360° | — | — | 300 | 170 | — | — | 3305 | — | — | 9,8 | I4 |
| Hugos East | 50 | 30 | 40 | 30 | 24 | 30 | 581 | 30 | 23 | 9,8 | I4 |
| Hugos South | 80 | 80 | 200 | 120 | 42 | 46 | 2260 | 49 | 52,5 | 9,8 | I4 |
| Hugos West | 43 | 30 | 30 | 20 | 18 | 21 | 463 | 23 | 19 | 9,8 | I4 |
| Humboldt | 20 | 12 | 20 | 12 | 10 | 9 | 269 | 16 | 16 | 9,8 | I |
| InterCon Lounge | 55 | — | — | 60 | 30 | 30 | 560 | 108 | 52,5 | 32 | I |
| Kaminzimmer | 60 | — | 80 | 80 | 36 | 35 | 1754 | 59 | 16 | 13 | GF |
| King | 45 | 30 | 50 | 24 | 24 | 24 | 646 | 32 | 21 | 7,8 | 2 |
| Knight | 45 | 30 | 50 | 24 | 24 | 24 | 646 | 32 | 21 | 7,8 | 2 |
| Köpenick I | 30 | 21 | 40 | 30 | 15 | 21 | 592 | 30 | 23 | 9,8 | GF |
| Köpenick I/II | 50 | 45 | 80 | 60 | 33 | 36 | 1151 | 52,5 | 26 | 9,8 | GF |
| Köpenick I/II/III | 120 | 80 | 150 | 110 | — | 36 | 1776 | — | — | 9,8 | GF |
| Köpenick II | 30 | 21 | 40 | 30 | 20 | 15 | 549 | 26 | 26 | 9,8 | GF |
| Köpenick II/III | 110 | 60 | 100 | 60 | 42 | 36 | 1173 | 52 | 23 | 9,8 | GF |
| Köpenick III | 40 | 33 | 40 | 30 | 20 | 21 | 614 | 26 | 23 | 9,8 | GF |
| Library Bar | — | — | — | — | — | — | 538 | — | — | — | GF |
| Lincke I | 38 | 24 | 40 | 30 | 26 | 26 | 430 | 26 | 16 | 9,8 | I |
| Lincke I/II | 80 | 60 | 80 | 60 | 48 | 45 | 829 | 52 | 19 | 9,8 | I |
| Lincke II | 38 | 24 | 40 | 30 | 26 | 26 | 388 | 26 | 19 | 9,8 | I |
| Litfaß | 70 | 40 | 80 | 80 | 30 | 30 | 1173 | 45 | 26 | 9,8 | I |
| Lounge Area | — | — | — | — | — | — | 1292 | 128 | 108 | 26 | 2 |
| Parkside Lounge | 55 | — | — | 60 | 28 | 30 | 538 | 32 | 16 | 26 | I |
| Pavillon | 500 | 300 | 500 | 500 | 78 | 96 | 5866 | 78 | 78 | 15,7 | GF |
| Potsdam I | 700 | 450 | 800 | 500 | 100 | 120 | 6641 | 105 | 65 | 19,7 | GF |
| Potsdam I/II | 1000 | 500 | 1300 | 800 | — | — | 12400 | 118 | 101 | 19,4/12,5 | GF |
| Potsdam I/II/III | 1500 | 860 | 2500 | 1200 | — | — | 16608 | 118 | 167 | 19,4/12,5 | GF |
| Potsdam I/III | 1200 | 690 | 1300 | 800 | 162 | 180 | 10850 | 65 | 167 | 19,7 | GF |

Die jeweils angegebene Fläche entspricht der Nutzfläche.

| Raumname | Theatre | Parliament | Reception | Banquett 10 Pax | Board Room | U Shape | Size (sq ft) | Length (ft) | Width (ft) | Height (ft) | Floor |
|---------------------|---------|------------|-----------|-----------------|------------|---------|--------------|-------------|------------|-------------|-------|
| Potsdam II | — | — | 400 | 310 | — | — | 5532 | 121 | 49 | 13 | GF |
| Potsdam III | 350 | 240 | 400 | 320 | 60 | 72 | 4036 | 62 | 62 | 19,7 | GF |
| Potsdam IV | — | — | — | — | 20 | 24 | 527 | 26 | 29,5 | 12,5 | GF |
| Promotion Lounge | — | — | — | — | — | — | 538 | — | — | — | GF |
| Queen | 45 | 30 | 50 | 24 | 24 | 24 | 646 | 32 | 21 | 7,8 | 2 |
| Reuter | 20 | 12 | 20 | 12 | 10 | 9 | 291 | 16 | 19 | 9,8 | I |
| Rook | 45 | 30 | 50 | 24 | 24 | 24 | 646 | 32 | 21 | 7,8 | 2 |
| Schinkel I | 24 | 12 | 20 | 20 | 10 | 15 | 301 | 16 | 19 | 9,8 | I |
| Schinkel I/II | 60 | 48 | 65 | 60 | 40 | 36 | 786 | 42 | 19 | 9,8 | I |
| Schinkel I/II/III | 120 | 84 | 120 | 90 | 75 | 72 | 1453 | 78 | 19 | 9,8 | I |
| Schinkel II | 36 | 24 | 30 | 36 | 20 | 21 | 484 | 26 | 19 | 9,8 | I |
| Schinkel II/III | 90 | 60 | 90 | 90 | 57 | 54 | 1152 | 62 | 19 | 9,8 | I |
| Schinkel III | 60 | 36 | 55 | 60 | 30 | 36 | 667 | 36 | 19 | 9,8 | I |
| Schöneberg I | 30 | 21 | 30 | 30 | 21 | 21 | 430 | 16 | 23 | 9,8 | GF |
| Schöneberg I/II | 82 | 45 | 60 | 40 | 27 | 30 | 872 | 32 | 23 | 9,8 | GF |
| Schöneberg I/II/III | 120 | 66 | 120 | 90 | 39 | 45 | 1227 | 49 | 23 | 9,8 | GF |
| Schöneberg II | 30 | 21 | 30 | 30 | 21 | 21 | 430 | 16 | 23 | 9,8 | GF |
| Schöneberg II/III | 60 | 42 | 60 | 60 | 27 | 27 | 786 | 32 | 23 | 9,8 | GF |
| Schöneberg III | 25 | 18 | 30 | 24 | 15 | 16 | 344 | 16 | 23 | 9,8 | GF |
| Tegel | 130 | 75 | 100 | 100 | 36 | 44 | 1259 | 32 | 39 | 9,8 | GF |
| Tiergarten I | 50 | 30 | 50 | 30 | 20 | 27 | 560 | 30 | 18 | 9,8 | GF |
| Tiergarten I/II | 100 | 60 | 100 | 60 | 30 | 33 | 1108 | 59 | 34 | 9,8 | GF |
| Tiergarten I/II/III | 140 | 100 | 200 | 100 | 48 | 45 | 1679 | 88,5 | 33 | 9,8 | GF |
| Tiergarten II | 50 | 30 | 50 | 30 | 20 | 27 | 538 | 30 | 19 | 9,8 | GF |
| Tiergarten II/III | 90 | 50 | 100 | 60 | 30 | 33 | 1130 | 42 | 33 | 9,8 | GF |
| Tiergarten III | 40 | 30 | 50 | 20 | 18 | 21 | 592 | 23 | 19 | 9,8 | GF |
| Zille | 36 | 24 | 30 | 36 | 16 | 21 | 441 | 26 | 52,5 | 9,8 | I |



INTERCONTINENTAL® BERLIN

InterContinental® Berlin
Budapester Straße 2 · D-10787 Berlin

Tel: +49 (0)30 26 02 0 · Fax: +49 (0)30 26 02 26 00
berlin@ihg.com · www.berlin.intercontinental.com
www.intercontinental.com/berlin

Please visit us at
www.facebook.com/InterContinentalBerlin

This hotel is owned by Union Investment Real Estate GmbH
and managed by InterContinental Hotel Berlin GmbH.

INTERCONTINENTAL MEETINGS.



BERLIN

Welcome to Berlin, where politics meets culture, inspiration meets lifestyle and classicism meets the modern age. In short: The whole world meets here, just like they do at the InterContinental® Berlin. With 45 conference rooms totalling 66736,24 sq ft, we are the ideal venue for international conventions, exclusive board meetings and private celebrations. Our 558 rooms and suites provide the perfect home for you and your guests.



THE IDEAL LOCATION

Success in business does not just start with choosing the right partner, it also starts with choosing the right location. At the InterContinental® Berlin, you and your business partners will find ideal working conditions – flexible function rooms suiting every need, state-of-the-art technical equipment and an experienced team delivering professional service with the love of detail. A priceless extra: the charm and style that have characterised the hotel for many decades.

What's more, our hotel is the ideal starting point to explore the vibrant and fascinating capital. Located in the heart of the city, we are just a few steps away from the Gedächtniskirche (Memorial Church), Berlin Zoo and the famous Kurfürstendamm boulevard. Welcome to Berlin, welcome to the InterContinental!

HOTEL

- 558 rooms, including 60 suites
- Modern, linear design with an innovative concept of space
- Exclusive Club InterContinental with separate check-in, personal guest service, separate lounge (including breakfast, free service at the bar and a snack buffet that changes three times a day), exclusive conference room for up to ten delegates
- Highest security standards, individual security concepts for visiting dignitaries and individual travellers as well as for entire events
- Wireless LAN in all public areas, in the conference area and guest rooms
- Business Center – PC usage, faxing, printing and scanning
- 24-hour guest service center
- SPA InterContinental® with a total area of 10763,9 sq ft including indoor pool (pool size: 16 x 8 m / 50' x 25'), whirlpool, mixed sauna and ladies only sauna, pool bar and sun terrace
- 24-hour fitness centre with modern exercise equipment from Techno Gym
- Beauty and massage parlour and hairdresser
- Inhouse florist "Flower's Best" provides decorations and ambiance

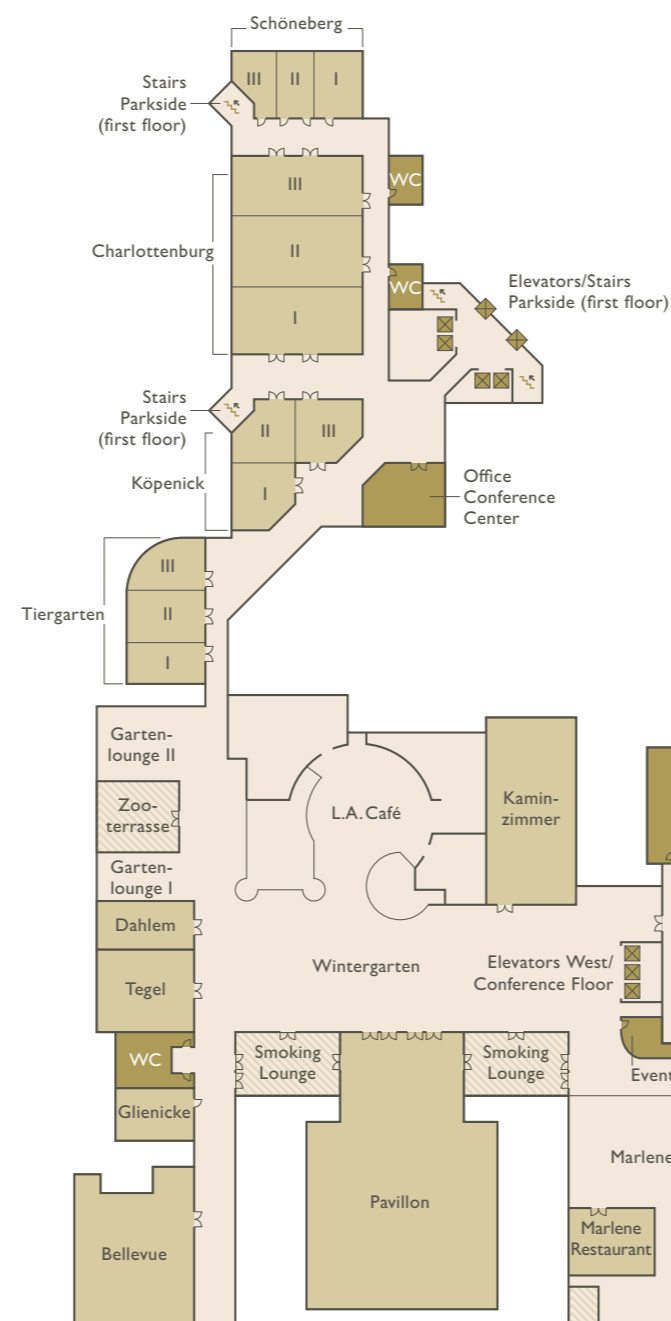
CONFERENCE ROOMS

- 45 conference rooms with a total area of more than 66736,24 sq ft
- Function room Potsdam is Berlin's largest ballroom without columns and with a total event space of 16361,14 sq ft
- Exclusive event areas and private dining rooms at Hugos Restaurant on the 14th floor with panoramic view of Berlin
- Steel and glass pavilion for up to 600 guests with separate entrance
- Convention service concierge, in-house event technology and support

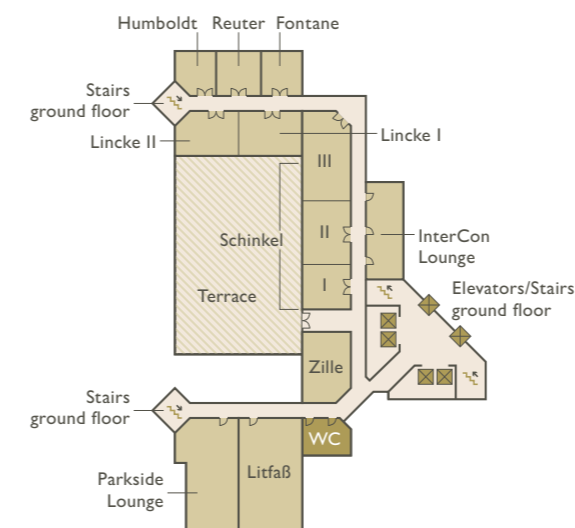
CONFERENCE FLOOR

- Premium meeting rooms equipped with whiteboards, plasma screens, WIFI, espresso machines and flooded with natural daylight
- Private atmosphere with direct access to Michelin-Star awarded Hugos Restaurant
- Exclusive use of the entire floor possible

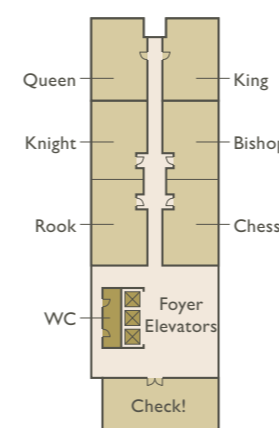
GROUND FLOOR



PARKSIDE 1ST FLOOR



CONFERENCE FLOOR 2ND FLOOR



HUGOS 14TH FLOOR



INSIDER COLLECTION

Our Insider Collection allows you to benefit from our hotel's unrivalled local knowledge. Often inspired by the destination itself, these experiences can be tailored to any event or meeting, ensuring that it delivers results and creates an experience to remember. The possibilities are endless, our local insider knowledge is comprehensive, our service is professional and impeccable – in short, we provide you with a truly unique Berlin experience.

INSIDER LOCATIONS

Insider Locations give you an opportunity to plan some parts of your event away from the hotel. We offer exclusive access to a variety of venues and experiences, allowing delegates to experience a side of the destination that visitors rarely see.

INSIDER SPEAKERS

Well-chosen speakers and witnesses of contemporary Berlin bring your event to life and inspire your delegates. They enrich your event with up-close and personal experiences.

INSIDER COMMUNITY

Allow your delegates to make a positive difference to the community. It could be anything from painting a mural at a local school to preparing lunch in a homeless shelter.

INSIDER INTERACTIONS

We offer various team-building opportunities during your event – either at the hotel or at selected locations around Berlin.

INSIDER BREAKS

A few minutes out of a busy day can become a whole experience in itself. We surprise your guests with local delicacies prepared at live cooking stations and take-home recipes: Turn your breaks into an event.

DINING

- Hugos Restaurant: Michelin-Star awarded restaurant on the 14th floor of the hotel serving down-to-earth gourmet cuisine, highest Michelin restaurant in the capital
- L.A. Café: Restaurant serving breakfast/brunch, lunch and dinner, international cuisine, regional products from Berlin and Brandenburg
- Marlene Bar: legendary Berlin hotel bar, exclusive library/smoking lounge for cigar aficionados or for private events
- 24-hour room service

IHG® BUSINESS REWARDS

No meeting is too small not to be rewarded. Are you an event planner, booker or travel manager? Do you organise private events, weddings or family celebrations? Then register for IHG® Business Rewards and earn valuable points for each event and each booked hotel room. Redeem these points for very attractive rewards of your choice. Whether for the office or for you home, our rewards catalogue is ranging from complimentary nights, gift cards and flights to donations for charities. Contact us and we are happy to tell you more!

