

## UMSPANNWERK ALEXANDERPLATZ



CONFERENCE, CONGRESSES AND EVENTS

Wahre Werte Umspannwerk Alexanderplatz  
Betriebsgesellschaft mbH  
Voltairestraße 5  
10179 Berlin

event@wahre-werte.net  
+49 30 470 807 77  
www.umspannwerk-alexanderplatz.de

## EVENT SPACES



The former Umspannwerk Alexanderplatz (electrical substation at Alexanderplatz) was built in 1960 and was the main energy supplier of East Berlin. Even after reunification in 1989, the Umspannwerk Alexanderplatz continued to be used to generate power and was not shut down until 2002. Since September 2011 Umspannwerk has been run by the company Wahre Werte which is responsible for marketing the spaces.

Umspannwerk Alexanderplatz is today used as a function venue providing the ideal setting for events of all kinds with up to 1.600 guests. Whether it is meetings, conferences, parties, fashion shows, receptions or car presentations, Umspannwerk can host it all.

The team from Wahre Werte will gladly assist you with your planning arranging reliable partners for you where necessary. From technical planning to furniture and decorations, to selecting caterers, the Wahre Werte network covers a wide range of service providers to suit your personal requests and budget.

Talk to us – the team at Wahre Werte looks forward to hearing from you!

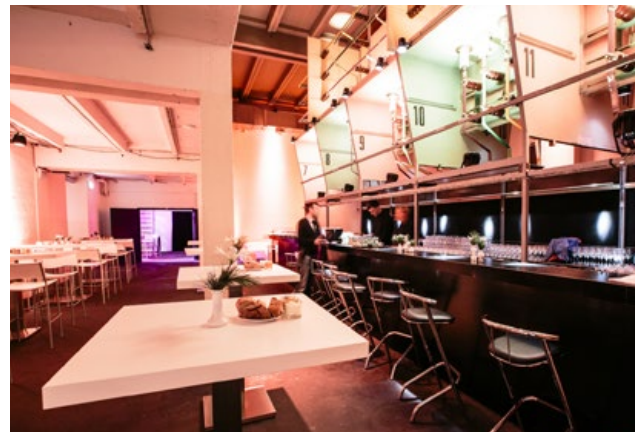


## EVENT SPACES



The event spaces at Umspannwerk Alexanderplatz stretch over four levels with two different event atmospheres. The more industrial designed lower level (ground-floor and first floor) includes the Main Hall, 360-degree bar, the Trafobox (transformer box) on the ground floor and the Galerie (gallery) located on the first floor.

The ground floor features are two permanent bars and a large cloakroom facility. The Main Hall and Trafobox are interconnected via the Galerie on the upper level. As the Galerie has a separate entrance, it is commonly used as a booth or VIP area. Bar facilities are available here as well.



The Conference Hall and the Empore (2nd and 3rd levels) offer a large event space with natural daylight. The access via an outdoor stair tower means that the areas are connected separately to the lower levels. The outdoor area is also very versatile and can be used for receptions, red-carpet events, photo walls, exhibition space for artists and marquees as well as catering/barbecue stations.

We are looking forward to welcoming you!

## DATAS & SEATING CAPACITY

| LOCATION                       | SIZE            | HEIGHT | RECEPTION  | THEATRE    | GALA       | BARS      | LIST PRICE<br>EVENT-DAY |
|--------------------------------|-----------------|--------|------------|------------|------------|-----------|-------------------------|
| <b>GF + 1. + 2. + 3. floor</b> | <b>1.020 m²</b> |        |            |            |            |           | <b>13.000 €</b>         |
| <b>Ground floor</b>            |                 |        | <b>Pax</b> | <b>Pax</b> | <b>Pax</b> | <b>m²</b> |                         |
| Main Hall inkl. 360° Bar       | 260 m²          | 7,20 m | 600        | 160        | 120        | 75 m²     | 4.500 €                 |
| Trafobox                       | 85 m²           | 7,20 m | 120        | –          | –          | 17 m²     | 1.000 €                 |
| <b>1. floor</b>                |                 |        |            |            |            |           |                         |
| Galerie                        | 100 m²          | 3,50 m | 280        | –          | –          | 14 m²     | 2.000 €                 |
| <b>2. + 3. floor</b>           |                 |        |            |            |            |           |                         |
| Conference Hall                | 415 m²          | 6,90 m | 500        | 400        | 350        | –         | 6.500 €                 |
| Empore                         | 160 m²          | 4,50 m | 320        | 100        | 100        | –         |                         |
| <b>Outdoor area</b>            |                 |        |            |            |            |           |                         |
| Outdoor area                   | 400 m²          | –      | –          | –          | –          | –         | 2.000 €                 |

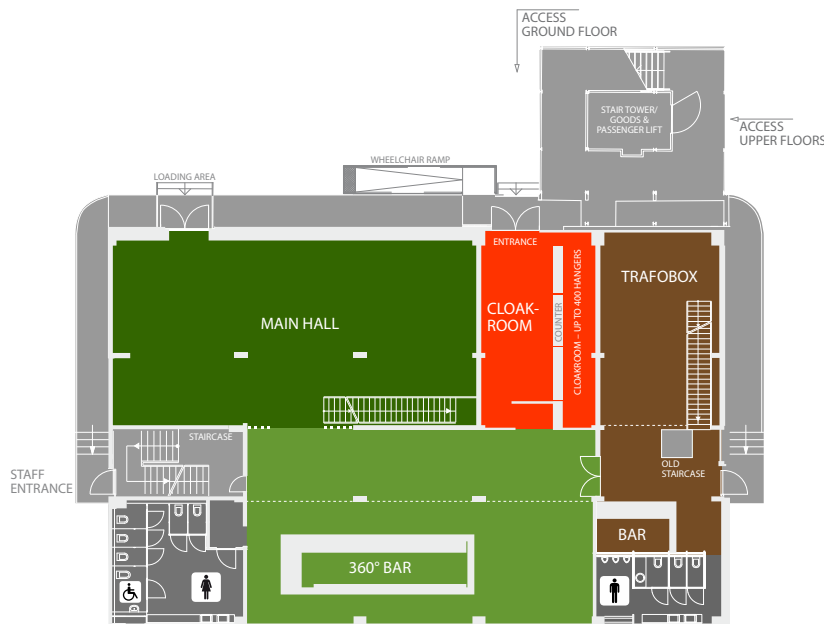


Please let us know if renting Umspannwerk Alexanderplatz is interesting for you. We would be pleased to draft you an individual offer.

The maximum capacity on the ground floor + 1. floor is 1.100 people and for the 2. + 3. floor 500 people. The seating figures are references only and may differ depending on layout, size of the chairs and tables and also the set up of the stage and technical features. All prices are net prices and are exclusive of VAT. Additionally we charge costs for power, water, staff and cleaning. Internet is not included. All specifications are subject to change and have to be inspected on-site.

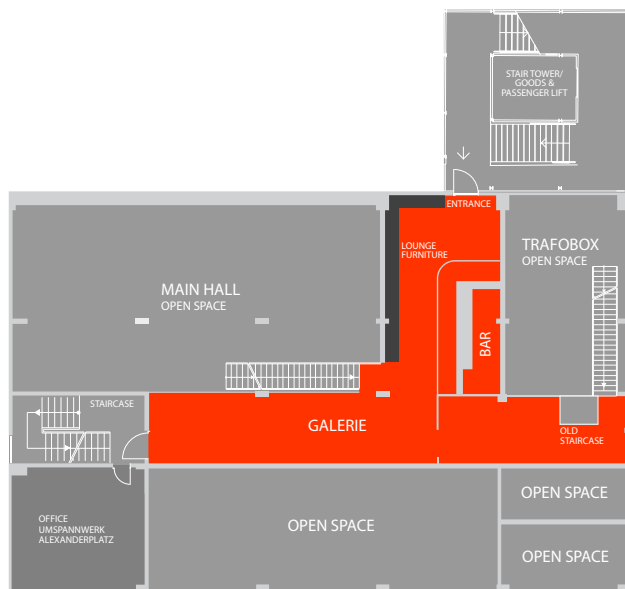
\* We charge 50 % of the list price for each set up and dismantling day (except for the Main Hall we charge 2.500 Euro)

## FLOORPLAN GROUND + 1. FLOOR



### Ground floor

- **MAIN HALL**  
Floor space: 160 sq m  
Ceiling height: 7,20 m
- **CLOAKROOM**  
Floor space: 56 sq m  
Ceiling height: 3,60 m
- **TRAFBOX**  
Floor space: 85 sq m  
Ceiling height: 7,20 m
- **360° BAR**  
Floor space: 174 sq m  
Ceiling height: 7,20 m
- **BAR**  
Floor space: 17 sq m  
Ceiling height: 7,20 m

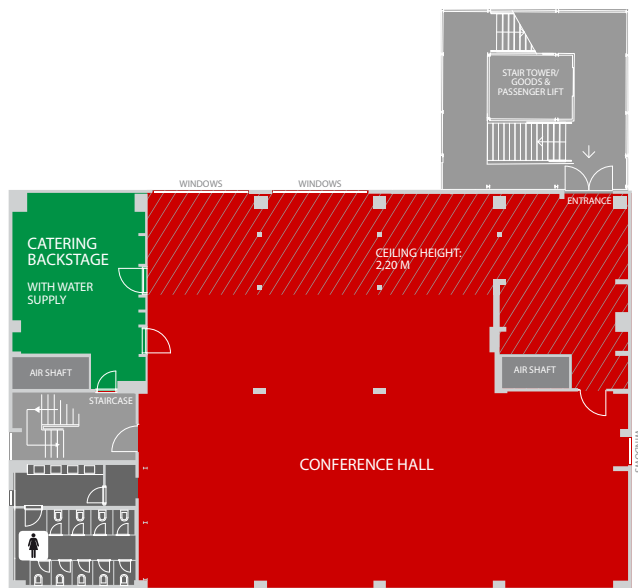


### First floor

- **GALERIE**  
Floor space: 100 sq m  
Ceiling height: 3,50 m

## FLOORPLAN 2. + 3. FLOOR

### Second floor



■ CONFERENCE HALL

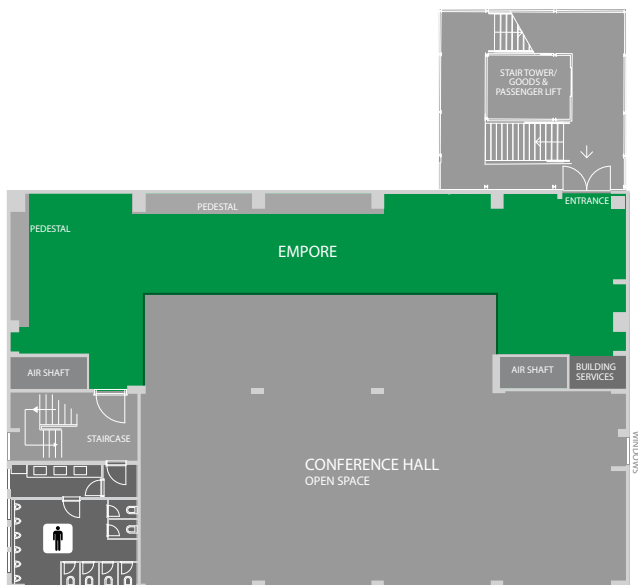
Floor space: 415 sq m

Ceiling height: 6,90 m

■ CATERING BACKSTAGE

Floor space: 55 sq m

### Third floor



■ EMPORE

Floor space: 160 sq m

Ceiling height: 4,50 m

## DIVERSE SERVICES



### PERSONAL

We have a large network of competent, experienced service providers available to assist you in various areas. Starting from barista to barkeeper up to first aid team, photographer, hosts/hostess or security. We are more than happy to support you with your staff planning.



### BEVERAGE PACKAGES

We offer many kinds of beverage packages whether you need a standard conference package, organic beverages or customized cocktails.

Each beverage package can be upgraded with coffee specialities. You can choose between an automatic and an italian coffee machine with a barista who will fascinate your guests with artful Latte Art.



### MOBILE BARSYSTEM

Our mobile bar system includes bar elements and shelves with coloured LED lights as well as fridges. All elements can be branded.



## DIVERSE SERVICES



### BRANDING SPACE

When it comes to branding your event, the facade and the stair tower of Umspannwerk Alexanderplatz feature different banner spaces for your personalised banner with high visibility. Another branding option could be the plotting of the window facade in the 2nd floor or of the mobile bar system.



### INTERNET

All event spaces at Umspannwerk Alexanderplatz are full Wifi-enabled (bandwidth may be upgraded from 10 Mbit/s to 200 Mbit/s (synchronously)). Let us know your needs and we'll draw up a tailor-made quote. When using the Wifi, you will be given personalised access details in advance.



### MARQUEES & CLOAKROOM

We offer various marquee options to extend the spaces of Umspannwerk Alexanderplatz. Whether it is for an additional cloakroom facility, accreditation, or an extrafunction area outside, we have just the right alternative. There even is a perfect marquee for your caterers, requi-



## CONTACTS & PARTNERS

### LOCATION

Umspannwerk Alexanderplatz  
Voltairestraße 5  
10179 Berlin

### OFFICE

Wahre Werte Umspannwerk  
Alexanderplatz Betriebsges. mbH  
Milastraße 2  
10437 Berlin

### ENQUIRIES & VISITS

Sales Team  
Phone: +49 30 470 807 00  
event@wahre-werte.net

### EVENT ORGANISATION & QUESTIONS CONCERNING PRODUCTION

Productions Team  
Phone: +49 30 470 809 00  
production@wahre-werte.net

### SECURITY

FSB-Security  
Jörn Ullmann  
joern.ullmann@fsb-security.com

### CATERING

AXICA Catering  
Alexandra Beck  
Phone: +49 30 200 086 640  
alexandra.beck@axica.de

Culinary Rebellion  
Eventcatering GmbH  
Dirk Müller  
Phone: +49 30 340 441 59  
info@kochbox.com

Einhorn Restaurations GmbH  
Tina Tischendorf  
Phone: +49 30 343 354 0  
tina.tischendorf@einhorn-catering.de

Wild & Wiese GmbH & Co. KG  
Ralf Dekorsy  
Phone: +49 30 657 779 01  
ralf.dekorsy@wildundwiese.de

### BAR CATERING

Barracuda Barcatering  
Jens Raasch  
Phone: +49 162 109 089 9  
j.raasch@barracuda-barcatering.de

### FURNITURE & DECOARTION

Party Rent Berlin  
Katharina Riedesel  
Phone: +49 30 200 061 513 7  
katharina.riedesel@partyrent.com

### LIGHT & SOUND

AMBION GmbH  
Mathias Kaminski  
Phone: +49 30 726 278 412 3  
umspannwerk-alexanderplatz@ambion.de

### EVENTMANAGEMENT

BEYOND-events  
Jeannette Bangura  
Phone: +49 30 810 960 96  
jbangura@beyond-events.de

### HOTEL

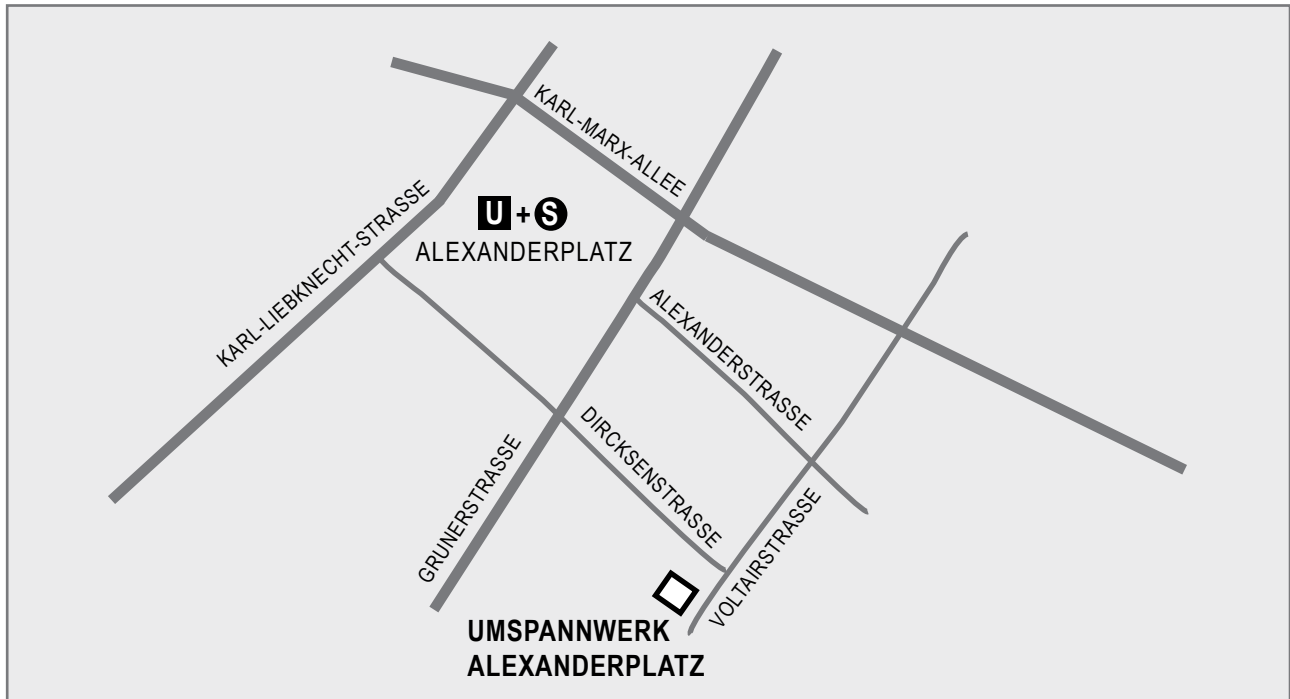
Hotel Amano Grand Central  
Julia Herchenbach  
Phone: +49 30 400 300 210 1  
Heidestraße 62, 10557 Berlin  
herchenbach@amanogroup.com

Hotel Amano  
Julia Herchenbach  
Phone: +49 30 400 300 210 1  
Auguststraße 43, 10119 Berlin  
herchenbach@amanogroup.com

### DRIVER SERVICE

BerlinMobil Frank Richert GmbH  
Doreen Plischkaner  
Phone: +49 30 422 199 14  
plischkaner@berlinmobil.de

## LOCATION & ARRIVAL



Umspannwerk Alexanderplatz is centrally located in Berlin Centre, directly at the Alexanderplatz.

### **PUBLIC TRANSPORT**

S+U Alexanderplatz (700 m away)

S+U Jannowitzbrücke (350 m away)

U Klosterstraße (200 m away)

underground train: U2, U5, U8

S-Bahn: S3, S5, S7, S9

bus: 100, 200, 245, 248, 300, N2, N40, N42, N5, N65, N8

metro: M2, M4, M5, M6

taxi: Airport Tegel approx. 30 minutes, Airport Schönefeld approx. 45 minutes

### **PARKADE**

Alexa-Center

Rathauspassagen

Q Park am Alexanderplatz