

Haus Zwingli

Flooded with light

.. huge historical leadlight windows, plenty of incident light

Convertible

.. for different events such as small conventions, press conferences, readings, concerts and dinners

Hotspot

.. located near Mediaspree in Berlin's hub of cultural enterprise, just 5 minutes from Warschauer Straße station (underground and train)

Full service

.. catering, audiovisual equipment, furnishings, staff, branding

Outdoor

.. roof top terrace and generous courtyard

Green

.. green electricity supply, event ticket from German Rail (DB), EMAS certified



Haus Zwingli

exclusive and flooded with light



At a glance

- ✓ 350 m²
- ✓ 120 people (in row)
- ✓ hall, gallery, seminar room, courtyard and roof top terrace
- ✓ up to 6 m high ceilings
- ✓ daylight
- ✓ 300 m to Warschauer Straße

Haus Zwingli is centrally located and neighbouring to Zwinglikirche. The hall „Huldrych“ is flooded with natural daylight through vast stained glass windows on both sides. Additional, the 6 m high ceiling and the parquet floor, create a unique atmosphere. Haus Zwingli is topped off with a generous courtyard and a roof top terrace for get-togethers



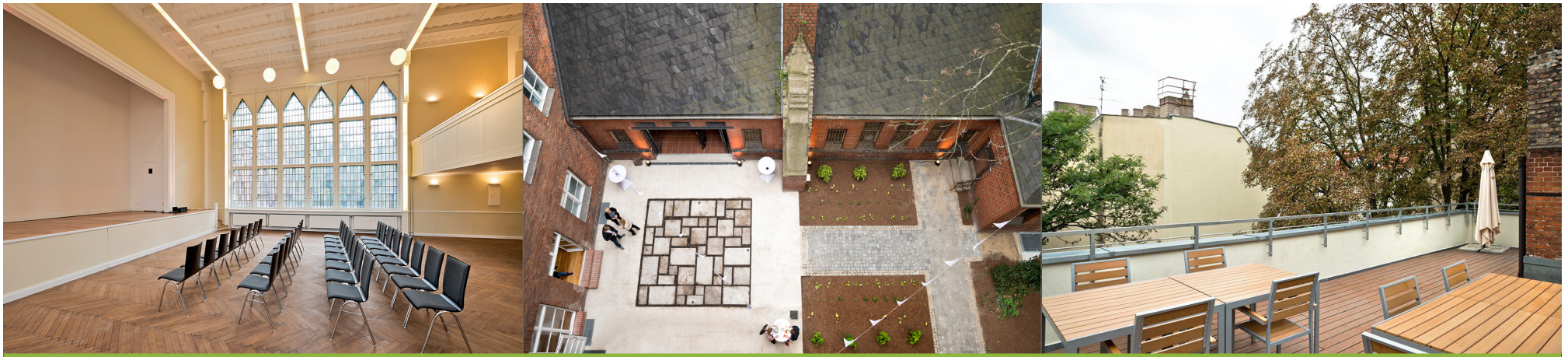
Arrival

- Underground: U1 to Warschauer Str., 3 min. walk
- Train: S5, S7, S75 to Warschauer Str., 3 min. walk
- Tram: M10 to Warschauer Str., 5 min. walk
- Bus: 347 to Modersohnstr., 2 min. walk

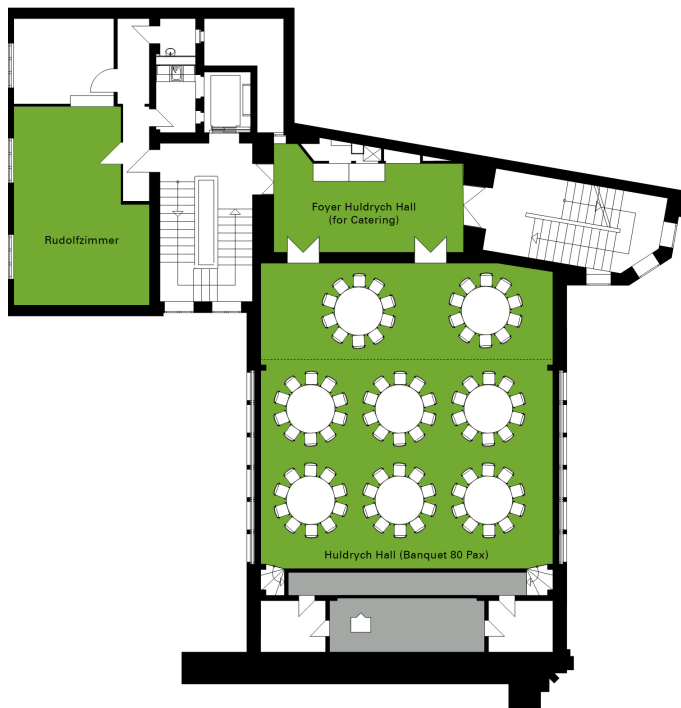
Event Space	M ²	Height	Banq.	Row	Recpt.	Dayl.
Hall „Huldrych“	128	6	80	120	150	●
Gallery	66	3			50	●
Foyer	33	3			50	●
Room „Rudolf“	32	3,10		25	40	●
Room „Hofzimmer“	45	3		30	20	●
Roof top terrace	60				60	●

Haus Zwingli

350 m² event space for up to 150 people



3rd Floor Huldrych Hall and room „Rudolf“



4th Floor gallery to hall and roof top terrace

