



FANTASTIC VENUES for your special event

Six venues with a focus on sustainability



UMWELTFORUM

1.200m² event space
350-400 people
1 hall, 14 seminar rooms
terrace



NEUE MÄLZEREI

800m² event space
150 people
3 halls, 3 seminar rooms
Elysium, terrace



TAGUNGSWERK

1.000m² event space
300 people
1 hall, 8 seminar rooms
courtyard & roof terrace



FRANZÖSISCHE FRIEDRICHSTADTKIRCHE

1.000m² event space
600 people
2 halls, 2 seminar rooms
courtyard



ZWINGLIKIRCHE

800m² event space
400 people
1 hall, 3 additional rooms
courtyard



HAUS ZWINGLI

350m² event space
150 people
1 hall, 1 gallery
courtyard & roof terrace

BESONDERE ORTE

Whether it's one of Berlin's industrial monuments, a converted historical church, or a modern conference venue – at BESONDERE ORTE you will find the right venue for your event.

Our venues are transformation specialists. Almost all event formats are possible in every one of our venues: conferences, conventions, company events, gala dinners, awards, and all kinds of celebrations and gatherings.

"We'll take care of it!" In addition to our venues, we can also provide you with full event services. Benefit from the direct,

on-location communication and being able to have the same contact person for absolutely everything.

- an environmentally aware company founded in 2000
- EMAS certified venues: Umweltforum, Tagungswerk, Neue Mälzerei, Haus Zwingli
- 100 % green electricity at all venues
- photovoltaic system and combined heat and power plants at Umweltforum and Tagungswerk
- 100% organic drinks and tea breaks

Umweltforum

Daylight

.. lots of natural daylight from generous windows in all rooms

For all kinds of events

.. conferences, award ceremonies, dinners, conventions...

Spacious

.. 1 hall and 12 seminar rooms

Central

.. 2 km from Alexanderplatz

Barrier-free access

.. for people with disabilities throughout the venue

Green

.. green electricity supply, event ticket from German Rail (DB), green roof, combined heat and power unit (CHP), photovoltaic system, EMAS certified



Umweltforum

spacious and transparent



At a glance

- ✓ 1.200 m²
- ✓ 350 people (in row)
- ✓ 1 hall and 12 seminar rooms
- ✓ terrace with outdoor area
- ✓ up to 17 m high ceilings
- ✓ daylight in all rooms

| Räume | M ² | L x W | Height | Row | Parl. | Banq. | U | Circle | Recpt. | Dayl. |
|-----------------------------|----------------|---------|--------|-----|-------|-------|----|--------|--------|-------|
| Hall - total | 450 | 22 x 21 | 17 | 348 | 148 | 192 | 46 | 59 | 500 | ● |
| Hall - core | 220 | 17 x 13 | 17 | 266 | 123 | 128 | 46 | 54 | 200 | ● |
| Gallery | 240 | 20 x 4 | 12 | | | 120 | | | 160 | ● |
| Foyer | 155 | 18 x 11 | 4 | | | | | | 120 | ● |
| Foyer 1 st Floor | 150 | 18 x 11 | 3 | | | 80 | | | 120 | ● |
| Seminar 1, 2, 4, 5 | 26 | 6,5 x 4 | 4 | 25 | 16 | | 16 | 22 | | ● |
| Seminar 3, 6 | 26 | 6,5 x 4 | 4 | 25 | 16 | | 16 | 20 | | ● |
| Seminar 8, 9 | 66 | 11 x 6 | 3 | 58 | 30 | 40 | 28 | 38 | 75 | ● |
| Seminar 10 | 48 | 8 x 6 | 3 | 36 | 24 | 24 | 22 | 28 | 60 | ● |
| Seminar 11 | 18 | 6 x 3 | 3 | 12 | | 8 | | 17 | 20 | ● |
| Seminar 12 | 38 | 6 x 6,5 | 3 | 27 | 16 | 24 | 18 | 24 | 42 | ● |
| Seminar 13 | 26 | 5,5 x 5 | 3 | 24 | 8 | 8 | 14 | 20 | 30 | ● |
| Terrace | 132 | 11 x 12 | | | | 80 | | | 120 | ● |



Arrival

- Underground: U5 to Strausberger Platz, 3 min. walk
- Tram: M5, M6 und M8 to Platz der Vereinten Nationen, 3 min. walk
- Bus: 142 from Hauptbahnhof or Ostbahnhof to Friedrichsberger Straße, 2 min. walk

Umweltforum

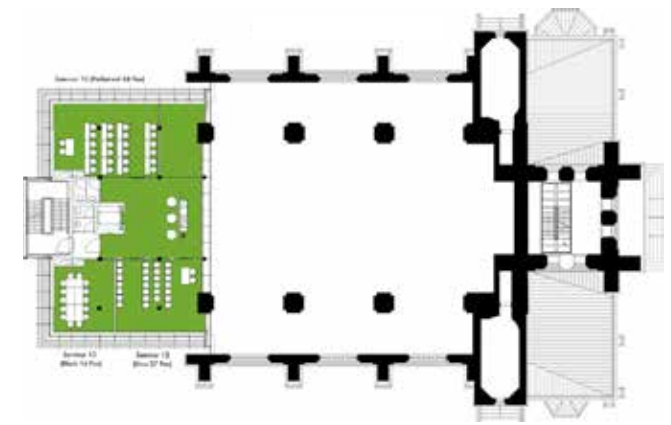
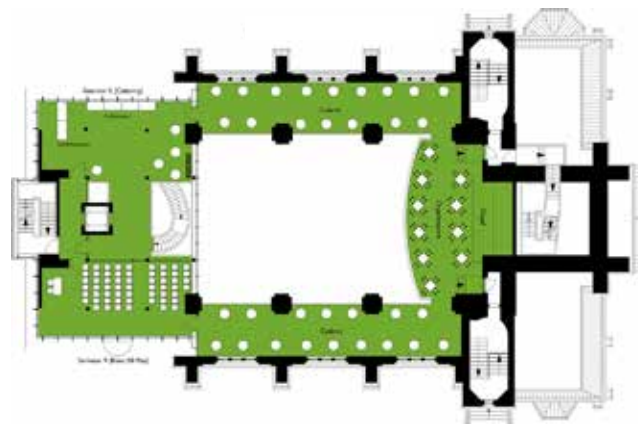
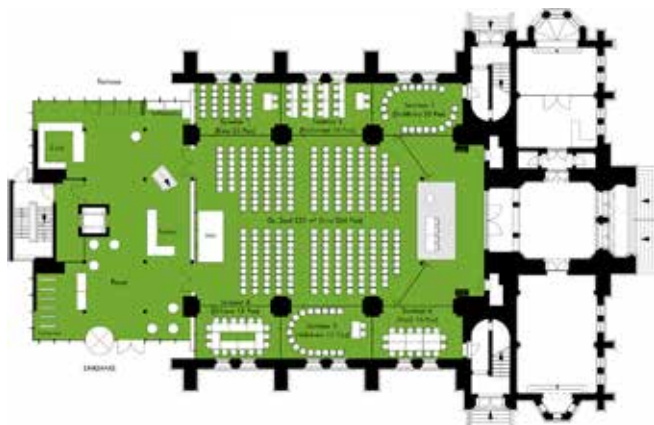
1.200 m² event space for up to 400 people



Ground floor

1st Floor

2nd Floor



Neue Mälzerei

Historic charm

.. original brick walls, domed rooms steeped in history

Flexible

.. 1 hall and 5 seminar rooms all on one floor, walls can be opened or closed for effective and flexible use of space

Variously usable

.. for conferences, workshops, product presentations and events

Full service

.. catering, audiovisual equipment, furnishings, staff, branding

Easy to get to

.. 2 km from Alexanderplatz

Green

.. green electricity supply, event ticket from German Rail (DB), EMAS certified



Neue Mälzerei

compact and versatile



At a glance

- ✓ 800 m²
- ✓ 140 people (in row)
- ✓ 1 hall und 5 seminar rooms
- ✓ up to 5 m high ceilings
- ✓ daylight in all rooms
- ✓ Own restaurant on the ground floor

| Räume | M ² | L x W | Height | Row | Parl. | Banq. | U | Circle | Recpt. | Dayl. |
|----------------|----------------|------------|--------|-----|-------|-------|----|--------|--------|-------|
| Plenary hall | 130 | 20,2 x 6,4 | 2,8 | 140 | 74 | 80 | 46 | 60 | 140 | ● |
| Domed hall n/s | 95 | 10 x 9,5 | 5,0 | 79 | 44 | 50 | 26 | 40 | 75 | ● |
| Lobby | 110 | 17 x 6,4 | 2,8 | | | | | | 75 | ● |
| Lounge | 60 | 10 x 6,4 | 2,8 | | | 32 | | | 50 | ● |
| Seminar room I | 47 | 7,4 x 6,4 | 2,8 | 45 | 24 | 30 | 18 | 26 | 45 | ● |
| Sem. room II | 51 | 8 x 6,4 | 2,8 | 54 | 24 | 30 | 20 | 26 | 25 | ● |
| Sem. room III | 30 | 4,6 x 6,4 | 2,8 | 23 | 15 | 20 | 16 | 22 | | ● |
| Sem. room I+II | 98 | 15,4 x 6,4 | 2,8 | 107 | 57 | 70 | 38 | 45 | 60 | ● |
| Malzküche | 170 | 18 x 11,5 | 3,4 | | | 70 | | | | ● |
| Terrace | 72 | 6 x 12 | | | | 48 | | | 60 | ● |



Arrival

- Underground: U5 bis Strausberger Platz, exit Lebuser Str., 3 min. walk
- Tram: M5, M6 and M8 to Platz der Vereinten Nationen, 3 min. walk
- Bus: 142 from Hauptbahnhof or Ostbahnhof to Friedrichsberger Straße, 2 min. walk

Neue Mälzerei

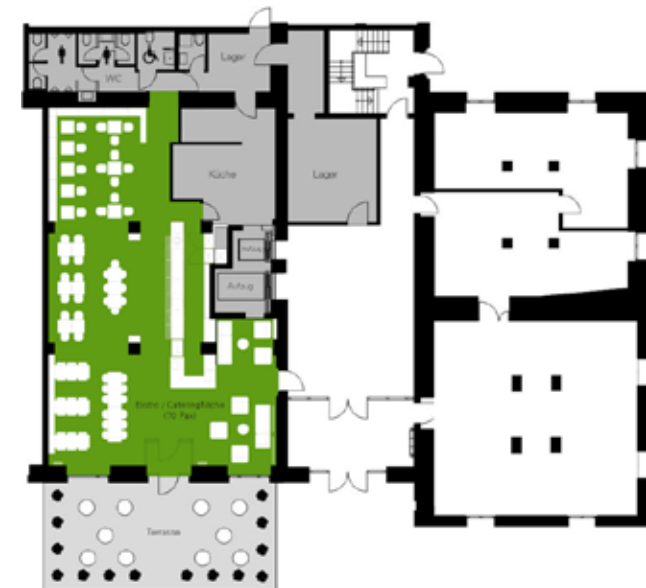
800 m² event space for up to 140 people



5th Floor



Ground floor (Restaurant Malzküche)



Tagungswerk

Flexible

.. equally suitable for both large conferences or small workshops

Compact

.. 1 hall and 9 seminar rooms all close together

Central

.. 300 m from Friedrichstraße (Checkpoint Charlie)

Full service

.. catering, audiovisual equipment, furnishings, staff, branding

Green

.. green electricity supply, event ticket from German Rail (DB), EMAS certified, green roof, combined heat and power unit (CHP), photovoltaic system

Barrier-free access

.. for people with disabilities in all rooms



Tagungswerk

restrained and tasteful



At a glance

- ✓ 1.000 m²
- ✓ 300 people (in row)
- ✓ 1 hall, 9 seminar rooms

- ✓ roof top terrace, courtyard
- ✓ up to 5 m high ceilings
- ✓ daylight in all rooms

| Event Space | M ² | T Height | Row | Parl. | Banq. | U | Circle | Recpt. | Dayl. |
|-----------------------------|----------------|-------------|-----|-------|-------|----|--------|--------|-------|
| Hall - total | 292 | 4,9-6,7 | 312 | 166 | 180 | 68 | 68 | 300 | ● |
| Hall - north | 155 | 4,9 | 183 | 102 | 60 | 36 | 49 | 160 | ● |
| Hall - south | 137 | 6,7 | 108 | 53 | 60 | 24 | 44 | 120 | ● |
| Lobby | 129 | 2,8 | | | | | | 100 | ● |
| Foyer | 110 | 3,0 | | | | | | 75 | ● |
| Stage room | 49 | 2,9 | 42 | 20 | 30 | 22 | 33 | 50 | ● |
| Seminar 1 | 24 | 2,8 | 21 | 10 | 10 | 8 | 19 | 25 | ● |
| Seminar 2 | 30 | 2,8 | 24 | 15 | 10 | 10 | 20 | 35 | ● |
| Seminar 3 | 22 | 2,8 | 18 | | | | | | ● |
| Foyer 2 nd floor | 48 | 2,8 | | | | | | | |
| Seminar 4 | 37 | 2,8 | 20 | 16 | 20 | 14 | 21 | 30 | ● |
| Seminar 5 | 28 | 2,8 | 30 | 15 | 20 | 16 | 24 | 35 | ● |
| Seminar 6 | 22 | 2,8 | 18 | | | | | | ● |
| Seminar 7 | 80 | 2,8 | 81 | 36 | 50 | 26 | 50 | 60 | ● |
| Seminar 8 | 57 | 2,8 | 54 | 24 | 30 | 25 | 40 | 50 | ● |
| Roof top terrace | 130 | | | | 60 | | | 110 | ● |



Arrival

- Underground: U6 to Kochstraße, 5 min. walk
- Bus: 248 to Jüdisches Museum, M29 to Lindenstr./Oranienstr., 5 min walk

Tagungswerk

1.000 m² event space for up to 300 people



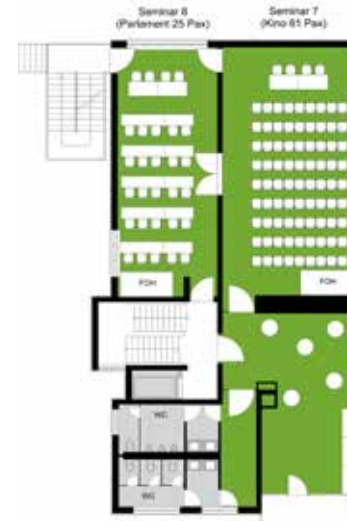
Groundfloor



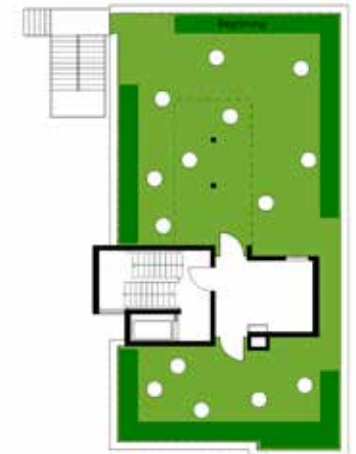
1st Floor



2nd Floor



3rd Floor / roof top terrace



Französische Friedrichstadtkirche

Awe-inspiring

.. spectacular main hall has capacity for 500 guests

Sublime

.. oval hall, 20m-high ceiling, galleries and a historic Eule pipe organ

Historic city centre

.. located on Gendarmenmarkt and surrounded by Berlin's greatest historic attractions

Easy to get to

.. 10 minutes from Berlin central station

Green

.. green electricity supply, event ticket from German Rail (DB)



Französische Friedrichstadtkirche

magnificent and sublime



At a glance

- ✓ 1.000 m²
- ✓ 490 people (in row)
- ✓ 2 halls, 2 seminar rooms

- ✓ courtyard
- ✓ up to 20 m high ceilings
- ✓ daylight in all rooms

Französische Friedrichstadtkirche is a building of sublime grandeur with a majestically elegant interior. The building is located on Gendarmenmarkt, Berlin's historic city centre. Multiusable event spaces and

The 720 m² hall with its 20 m-high ceilings offers space for up to 500 people. In addition, Französische Friedrichstadtkirche has another 160 m² hall, two seminar rooms and an exclusive courtyard.



| Event Space | M ² | Height | Row | Parl. | Banq. | Recpt. | Dayl. |
|---------------------------|----------------|--------|-----|-------|-------|--------|-------|
| Hall | 720 | 20 | 490 | 196 | 300 | 500 | ● |
| Hall „Georges Casalis“ | 160 | 3,5 | 100 | 52 | 70 | 150 | ● |
| Seminar room „H. Albertz“ | 24 | 3,5 | 18 | | | | ● |
| Seminar room „M. Barot“ | 30 | 3,5 | | | | | ● |
| Courtyard | 108 | | | | | | ● |

Arrival

- Underground: U6 to Französische Straße, 3 min. walk
U2 to Hausvogteiplatz, 3 min. walk
- Bus: 147 to underground station Französische Straße, 3 min. walk

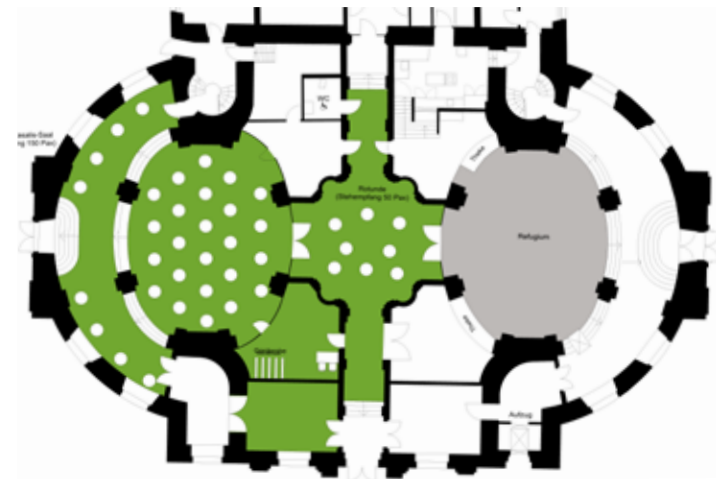
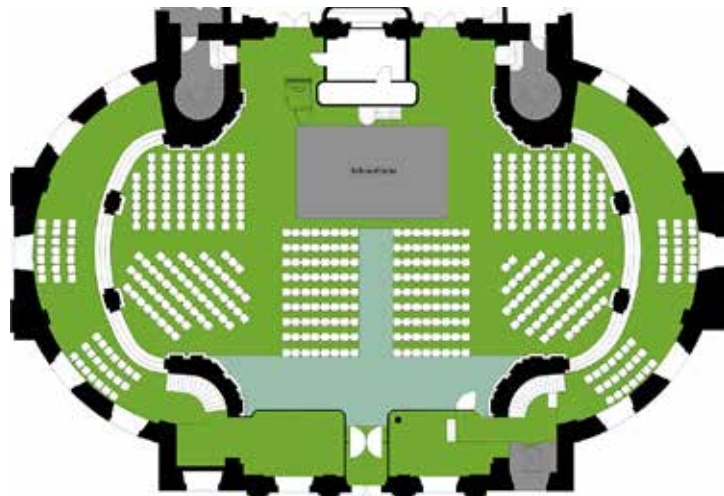
Französische Friedrichstadtkirche

1.000 m² event space for up to 500 people



Upper church

Lower church



Zwinglikirche

Impressive

.. 180 vintage lightbulbs brighten the church hall

Various

.. for events such as fashion shows, award ceremonies, dinners, concerts...

Hotspot

.. located near Mediaspree in Berlin's hub of cultural enterprise, just 5 minutes from Warschauer Straße (underground and train)

Full service

.. catering, audiovisual equipment, furnishings, staff, branding

Outdoor

.. generous courtyard

Green

.. green electricity supply, event ticket from German Rail (DB)



Zwinglikirche

inspiring and noble



At a glance

- ✓ 800 m²
- ✓ 400 people (reception)
- ✓ 1 hall, 2 additional rooms
- ✓ courtyard
- ✓ ceiling height of up to 20m
- ✓ daylight
- ✓ 300 m to Warschauer Straße station

iZwinglikirche represents itself with lovingly restored historical details and is located in the immediate surrounding of Warschauer Straße. The 520 m² hall with its 20 m high ceilings offers space for up to 400 people.

With its exceptional ambience, this venue is suitable for weddings, fashion shows, receptions, balls, gala dinners and other events.

| Event Space | M ² | Height | Banq. | Row | Recpt. | Dayl. |
|------------------------|----------------|--------|-------|-----|--------|-------|
| Hall - total space | 520 | 20 | 160 | 345 | 400 | ● |
| Hall - with side aisle | 105 | 5 | 45 | 87 | 100 | ● |
| Winter church | 45 | 5 | 24 | 45 | 50 | ● |
| Backstage | 45 | 4 | | | | ● |
| Courtyard | 340 | | | | 250 | ● |
| Foyer „Danneckerstr.“ | 20 | 4 | | | | ● |
| Foyer „Rudolfstr.“ | 25 | 4 | | | | ● |



Arrival

- Underground: U1 to Warschauer Str., 3 min. walk
- Train: S5, S7, S75 to Warschauer Str., 3 min. walk
- Tram: M10 to Warschauer Str., 5 min. walk
- Bus: 347 to Modersohnstraße, 2 min. walk

Zwinglikirche

800 m² event space for up to 400 people



Hall with adjacent courtyard



Haus Zwingli

Flooded with light

.. huge historical leadlight windows, plenty of incident light

Convertible

.. for different events such as small conventions, press conferences, readings, concerts and dinners

Hotspot

.. located near Mediaspree in Berlin's hub of cultural enterprise, just 5 minutes from Warschauer Straße station (underground and train)

Full service

.. catering, audiovisual equipment, furnishings, staff, branding

Outdoor

.. roof top terrace and generous courtyard

Green

.. green electricity supply, event ticket from German Rail (DB), EMAS certified



Haus Zwingli

exclusive and flooded with light



At a glance

- ✓ 350 m²
- ✓ 120 people (in row)
- ✓ hall, gallery, seminar room, courtyard and roof top terrace
- ✓ up to 6 m high ceilings
- ✓ daylight
- ✓ 300 m to Warschauer Straße

Haus Zwingli is centrally located and neighbouring to Zwinglikirche. The hall „Huldrych“ is flooded with natural daylight through vast stained glass windows on both sides. Additional, the 6 m high ceiling and the parquet floor, create a unique atmosphere. Haus Zwingli is topped off with a generous courtyard and a roof top terrace for get-togethers

| Event Space | M ² | Height | Banq. | Row | Recpt. | Dayl. |
|------------------|----------------|--------|-------|-----|--------|-------|
| Hall „Huldrych“ | 128 | 6 | 80 | 120 | 150 | ● |
| Gallery | 66 | 3 | | | 50 | ● |
| Foyer | 33 | 3 | | | 50 | ● |
| Room „Rudolf“ | 32 | 3,10 | | 25 | 40 | ● |
| Room „Hofzimmer“ | 45 | 3 | | 30 | 20 | ● |
| Roof top terrace | 60 | | | | 60 | ● |



Arrival

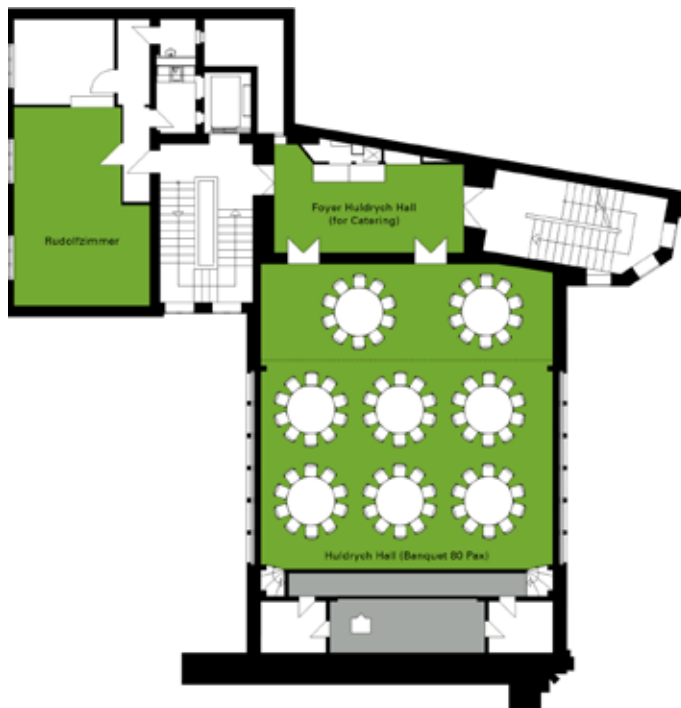
- Underground: U1 to Warschauer Str., 3 min. walk
- Train: S5, S7, S75 to Warschauer Str., 3 min. walk
- Tram: M10 to Warschauer Str., 5 min. walk
- Bus: 347 to Modersohnstr., 2 min. walk

Haus Zwingli

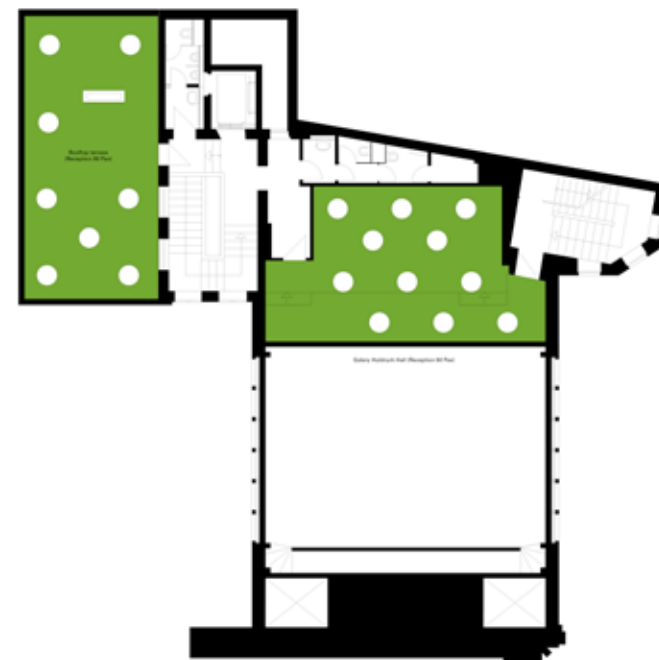
350 m² event space for up to 150 people



3rd Floor Huldrych Hall and room „Rudolf“



4th Floor gallery to hall and roof top terrace



Green Steps

on our journey towards sustainability

2002

🏠 Opening of Umweltforum Auferstehungskirche, the first ecological venue in Berlin

🏠 100 % electricity from renewable energy sources

🏠 100 % organic drinks, fair-trade coffee and tea

🏠 100 % recycled paper and presentation materials

2005

👑 Certified as an ÖKOPROFIT company, introduction of an environmental program

2006

👑 Officially recognized as a training-friendly company in Friedrichshain-Kreuzberg

🕒 First Berlin company run, followed by annual participation

2008

🏠 Climate-friendly business administration

2009

🕒 Member of Berlin Green Meetings

🏠 Climate-friendly events at BESONDERE ORTE venues

2010

👑 3rd prize in the national competition 'The Most Bicycle-Friendly Employer'

🕒 First 'Bike to Work' program, followed by annual participation

🕒 Participation in pilot project 'Sustainable Business Travel'

2011

👑 Award in the regional competition 'The Most Bicycle-Friendly Employer'

🕒 Membership in B.A.U.M. e.V.

🏠 'Bee Berlin' hives on the roof of the Umweltforum

2012

👑 Certification of EMAS environmental standards

👑 Award in the national competition 'The Most Bicycle-Friendly Employer'

🕒 Accreditation in 'Economy pro Climate'

2013

👑 Winner of the Meeting Experts Green Award

👑 2nd place in Germany's Location Award in the category of 'Sustainability and Innovation'

2014

🕒 Accreditation in the event industry's 'fairpflichtet' sustainability code

🏠 KIM evaluation of business sustainability

2015

👑 Statement of compliance – accreditation from the German Sustainability Code

2016

🏠 Analyse of the value chains for increasing the economic sustainability



👑 Awards

🕒 Participation / Membership

🏠 Company / Venues

Contact

committed and competent

BESONDERE ORTE

Umweltforum Berlin GmbH
Pufendorfstr. 11 | 10249 Berlin
Phone: 030 52 68 021 0
Fax: 030 52 68 021 10
info@besondere-orte.com
www.besondere-orte.com

Arrival Umweltforum

Underground:

U5 to Strausberger Platz,
exit Lebuser Straße,
5 min. walk

Tram:

M5, M6, or M8 to Platz der
Vereinten Nationen,
5 min. walk

Bus:

142 from Hauptbahnhof or
Ostbahnhof to Friedrichsberger Str.,
2 min. walk

