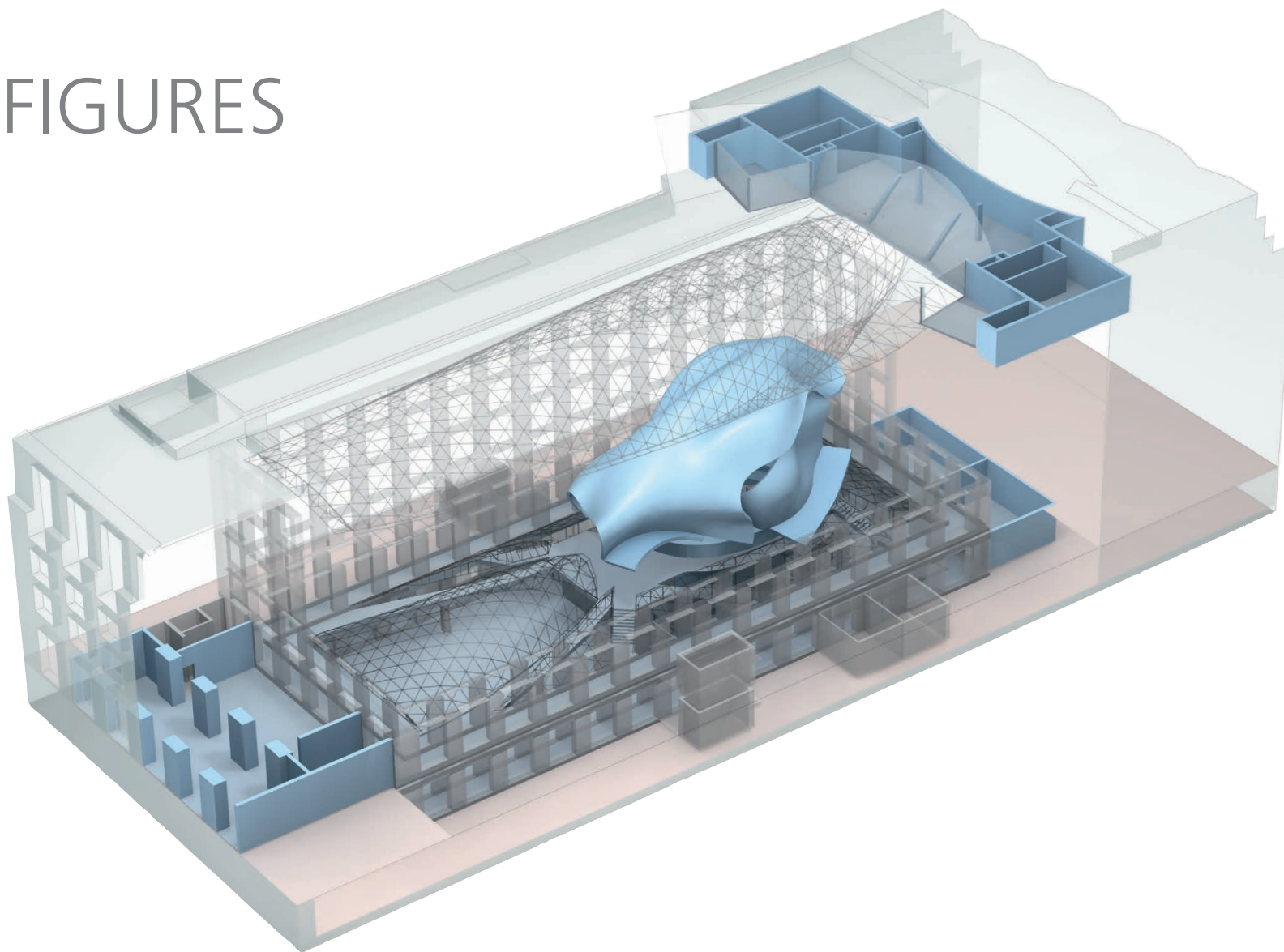


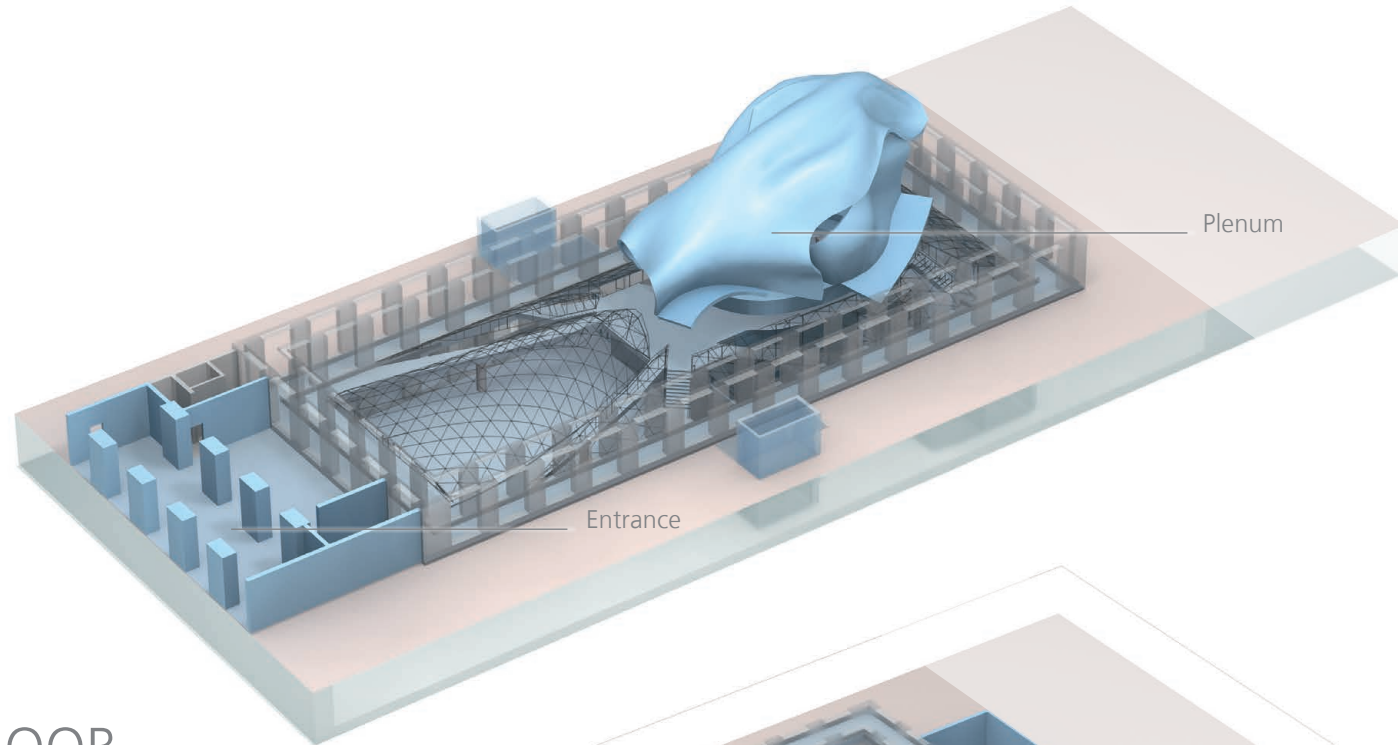
FACTS & FIGURES

EVENT PLANNER

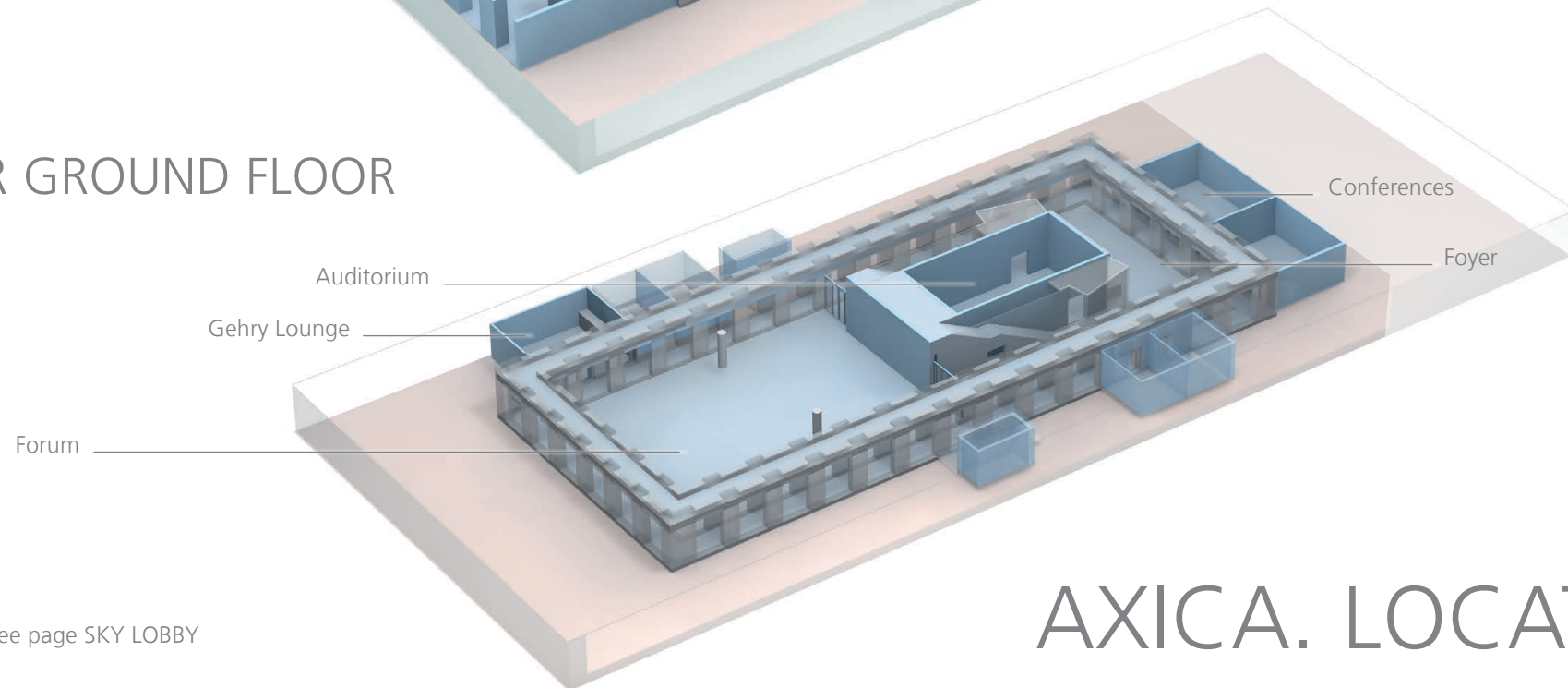


Here you will find all the details necessary for planning your event: floor plans, technical data and information on room design, capacities and services available at AXICA.

GROUND FLOOR




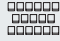



LOWER GROUND FLOOR



TOP FLOOR » see page SKY LOBBY

AXICA. LOCATION

CAPACITIES OVERVIEW

SPACES	Area	SEATING CAPACITY:	CLASSROOM 	THEATRE 	BANQUET 	RECEPTION 	BOARDROOM 
PLENUM	188 m²		74 delegates	80 delegates	–	–	20 delegates
FORUM	530 m²		250 delegates	500 delegates	350 delegates	500 delegates	–
FOYER	200 m²		–	–	–	–	–
AUDITORIUM 1 & 2*	107 m²		60 delegates	100 delegates	–	–	30 delegates
CONFERENCES 1 & 2*	68 m²		30 delegates	55 delegates	–	–	25 delegates
CONFERENCES 3 & 4*	55 m²		24 delegates	40 delegates	–	–	20 delegates
GEHRY LOUNGE	70 m²		–	–	35 delegates**	35 delegates	–
SKY LOBBY	204 m²		40 delegates	80 delegates	50 delegates	80 delegates	–
SKY LOUNGES	46 m²		–	25 delegates	12 delegates	20 delegates	18 delegates

* flexible partitioning ** café seating

INTERIOR & FURNISHINGS

- » fully air-conditioned rooms
- » double glass roof allows natural lighting on all floors
- » colour: red carpet, parquet flooring in arcades and Plenum, pine wall panels
- » white lighting, partly dimmable
- » designer furniture
- » fitted bars in Foyer and Gehry Lounge
- » Facilities fully accessible for the disabled
- » access to lower ground floor via stairs and lifts
- » 4 passenger lifts, capacity 15 persons
- » building meets Green Meeting Standards (eco-friendly, energy-saving)

TECHNOLOGY & EQUIPMENT

- » AV equipment in Plenum and Auditorium
- » access to WLAN, telephone and fax
- » power points
- » cable infrastructure for TV and other media (Plenum, Auditorium and Conferences)
- » technical management provided by AXICA
- » technical cooperation with event production experts
- » goods lift (1.40 x 2.50 x 2.40 m high), capacity 27 (maximum load 2,500 kg), space between opened doors 1.39 m
- » separate delivery area (4.50 m wide x 3.00 m high), maximum load 3,500 kg

SERVICES

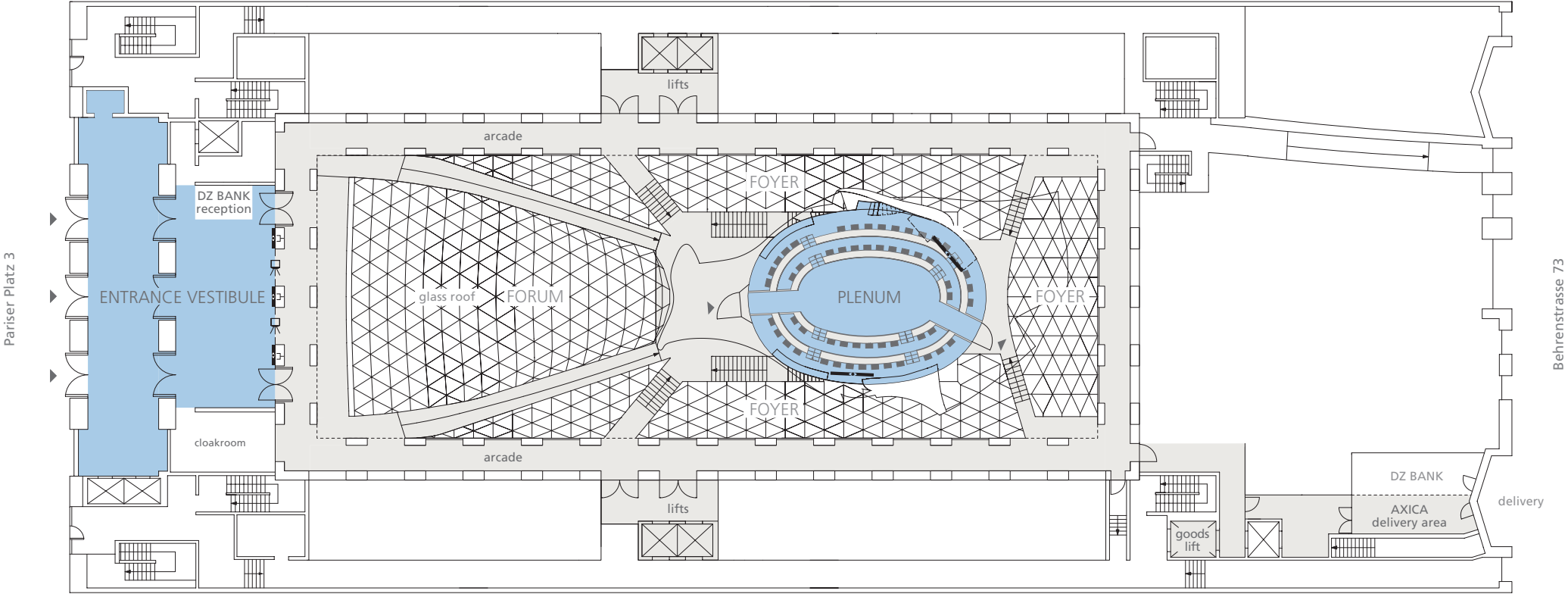
- » exclusive catering and service team
- » in-house designers and decorators
- » in-house security team
- » hostesses (cloakroom service and admission)
- » entertainment
- » photographers

All services are also available at selected external locations.
We are happy to supply other services on request.

NOTES



GROUND FLOOR

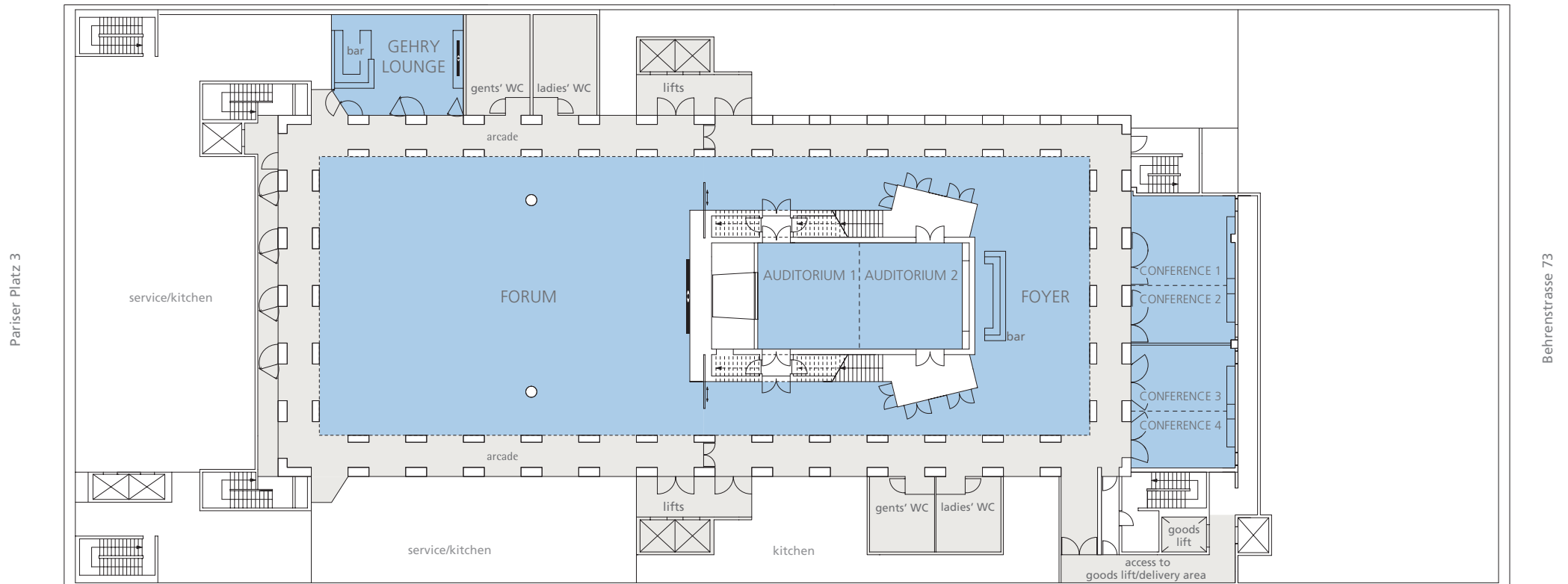




LOWER GROUND FLOOR

M 1:400

10 5 2,5 1 0,5



THE ENTRANCE VESTIBULE

GROUND FLOOR



EVENT TYPE

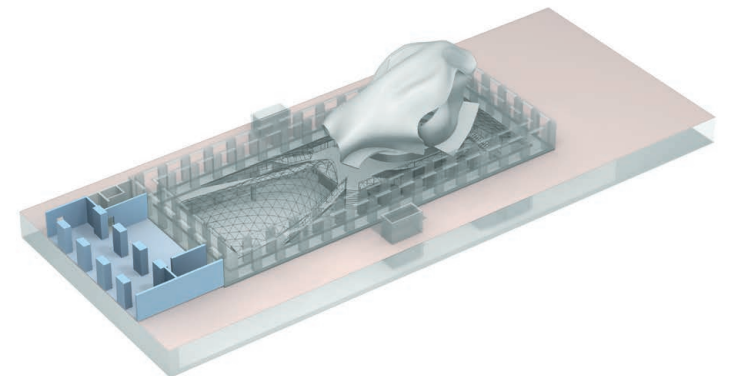
- » accreditation
- » cloakroom

INTERIOR & FURNISHING

- » Italian limestone façade
- » large steel glass doors
- » granite floor
- » access to Wi-Fi

EQUIPMENT & SERVICE

- » 3 LCD screens 47"
- » signage system
- » hostess and cloakroom service
- » in-house security
- » access to Wi-Fi





THE ENTRANCE VESTIBULE GROUND FLOOR

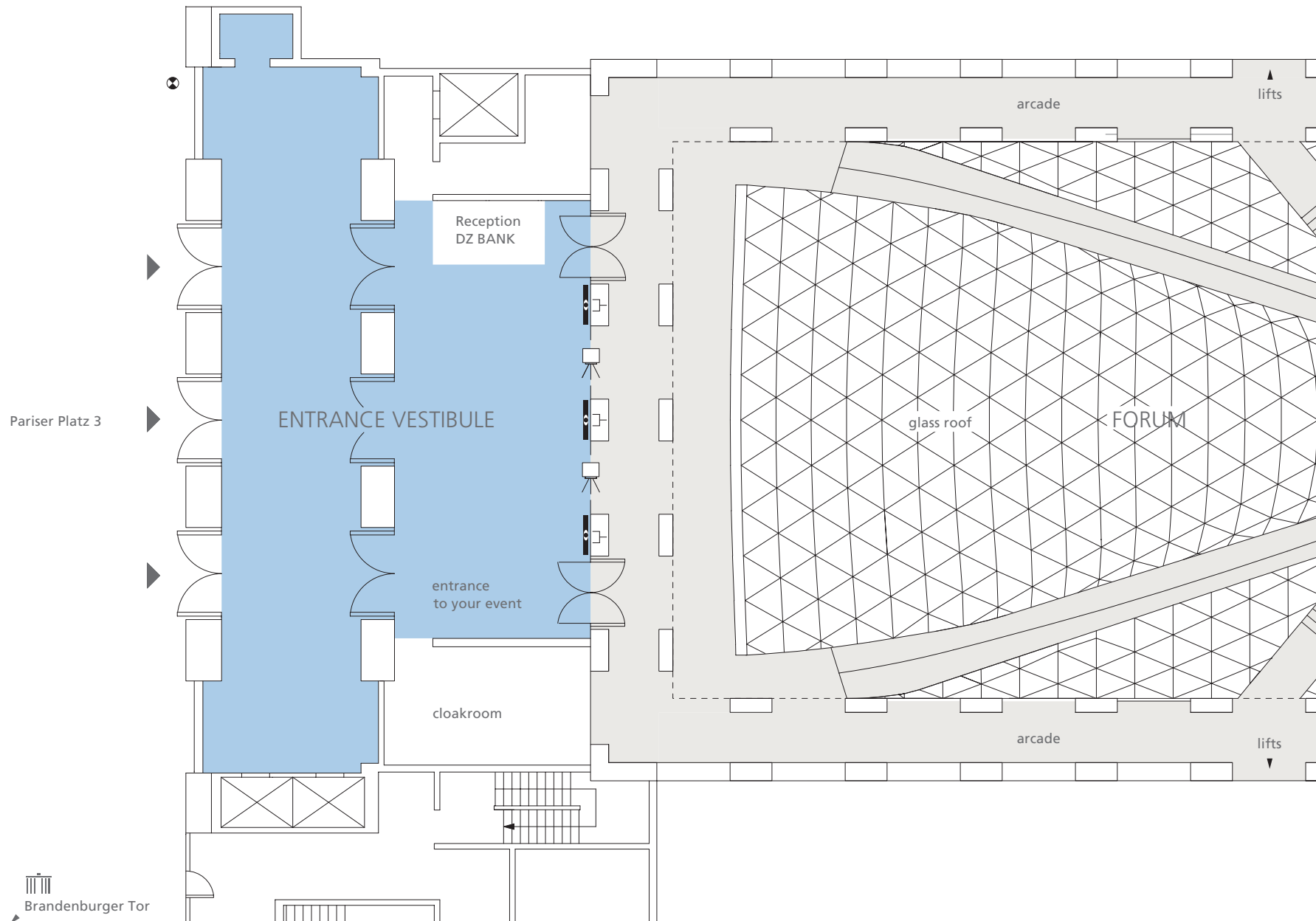
M 1:200

10

5

2,5

1 0,5



- TV and audio broadcasting system and floor cabling with data lines
- power point
- LCD screen 47"

THE PLENUM

GROUND FLOOR



EVENT TYPE

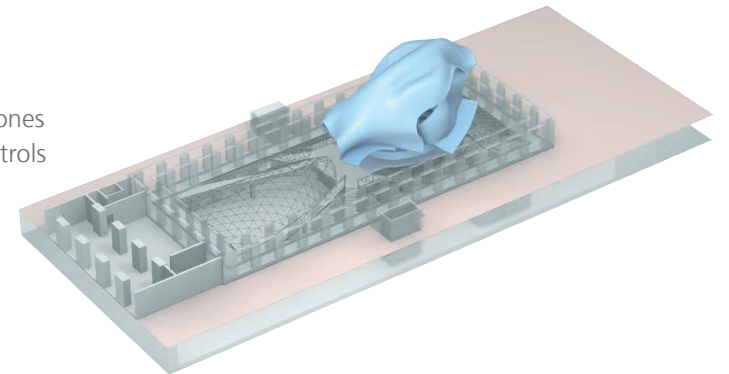
- » press conferences
- » workshops
- » meetings
- » lectures
- » plenary sessions
- » product presentations
- » podium discussions

INTERIOR & FURNISHING

- » flexible seating within the rows
- » variable speaker positioning
- » flexible seating on the parquet
- » boardroom table
- » sound-proofed wall panels
- » direct daylight

TECHNOLOGY & EQUIPMENT

- » sound system with podium miking
- » conference 2-way intercom microphones
- » digital audio / 2-channel graphic controls inclusive external sources
- » 2 108"LCD screens
- » portable 15"preview monitors
- » LED speaker illumination
- » extensive infrastructure (optical fibre, network, XLR and power supply)
- » technical management provided by AXICA





THE PLENUM GROUND FLOOR

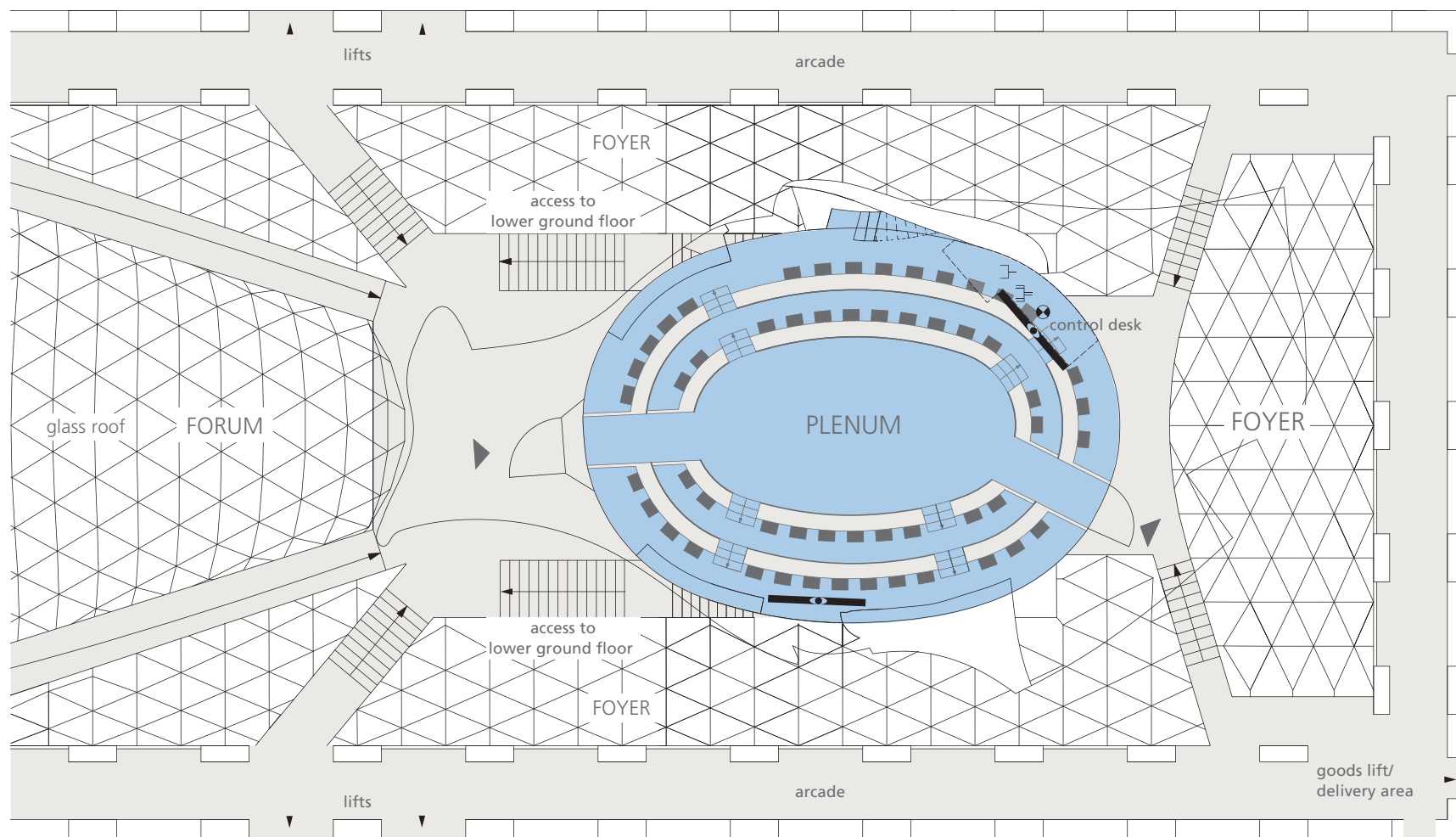
M 1:200

10

5

2,5

1 0,5



⊗ access channels
to tv and audio
transmission

≡ 3-phase
power point

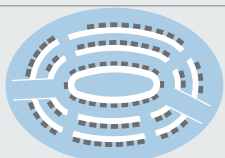
⎓ power point

📺 LCD screen 108"

DIMENSIONS

Area 188 m²

SEATING CAPACITY BOARDROOM

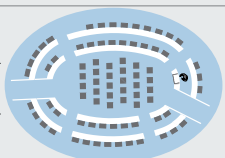


maximum 74 delegates

parquet 20 delegates

seating rows 54 delegates

THEATRE

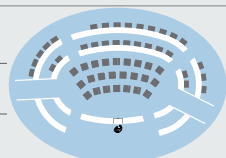


maximum 80 delegates

parquet 28 delegates

seating rows 52 delegates

PODIUM



maximum 54 delegates

parquet 24 delegates

seating rows 30 delegates

THE FORUM

LOWER GROUND FLOOR



EVENT TYPE

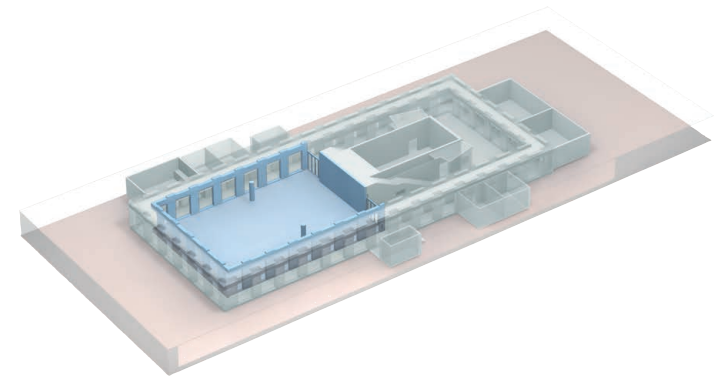
- » receptions
- » gala dinners
- » congresses
- » symposia
- » conferences
- » meetings
- » presentations
- » exhibitions
- » fashion shows
- » concerts

INTERIOR & FURNISHING

- » direct daylight, glass roof
- » red carpet
- » glass art installation
- » smooth-faced concrete wall (12 m wide and 5.58 m high)
- » access to Foyer and Gehry Lounge
- » designer furniture

TECHNOLOGY & EQUIPMENT

- » dimmable lighting
- » TV frequency links
- » access to Wi-Fi
- » power points
- » technical management provided by AXICA
- » technical cooperation with event production experts
- » LED wall (W 4,0 x H 2,1 m)
- » invisible cable duct integrated in the floor





THE FORUM LOWER GROUND FLOOR

M 1:200

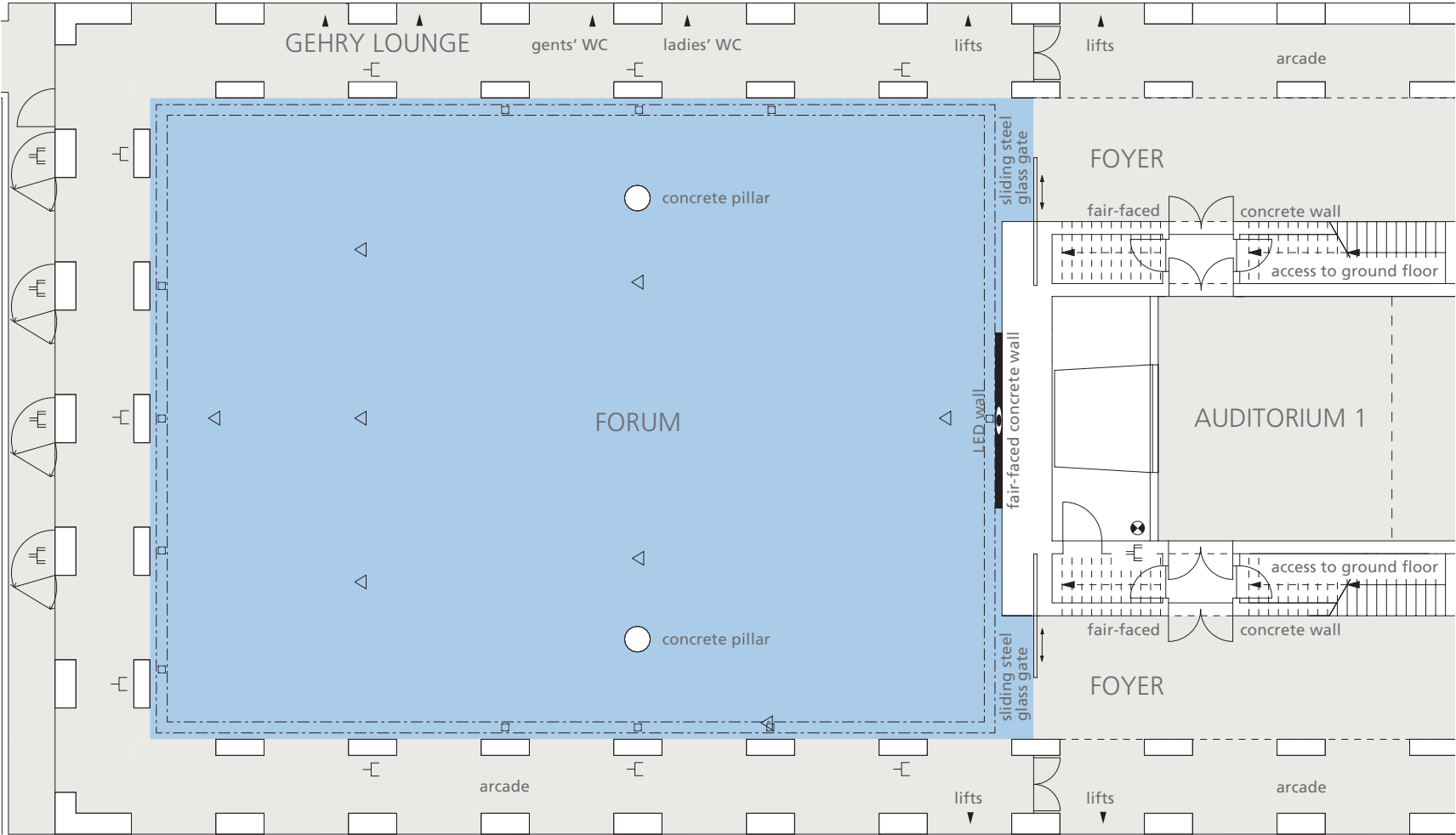
10

5

2,5

1

0,5



- power point
- 3-phase power point
- power, tel./data lines
- access ways TV and audio broadcasting system
- cable duct with port
- LED wall W 4,0 x H 2,1 m

DIMENSIONS	
total area	530 m²
length	26,50 m
width	20,00 m
height	3,32 m – 5,58 m

SEATING CAPACITY		including podium (8 x 4 m)	
classroom		250 delegates	250 delegates
theatre		500 delegates	500 delegates
banquet		350 delegates	320 delegates
reception		500 delegates	500 delegates

THE FOYER

LOWER GROUND FLOOR

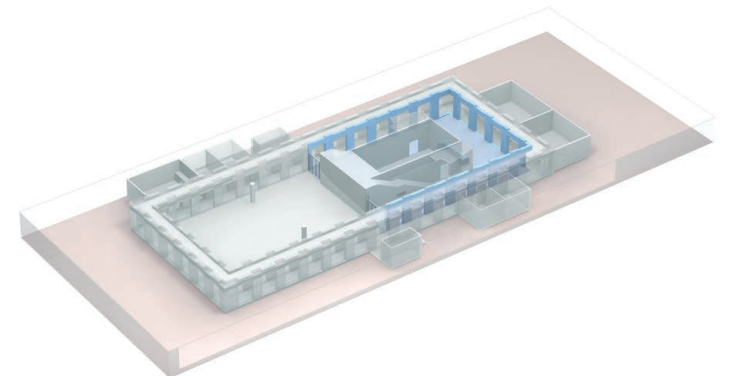


EVENT TYPE

- » receptions
- » coffee breaks
- » exhibitions & product presentations
- » cocktail bar & lounge
- » only available in combination with other spaces

INTERIOR & FURNISHING

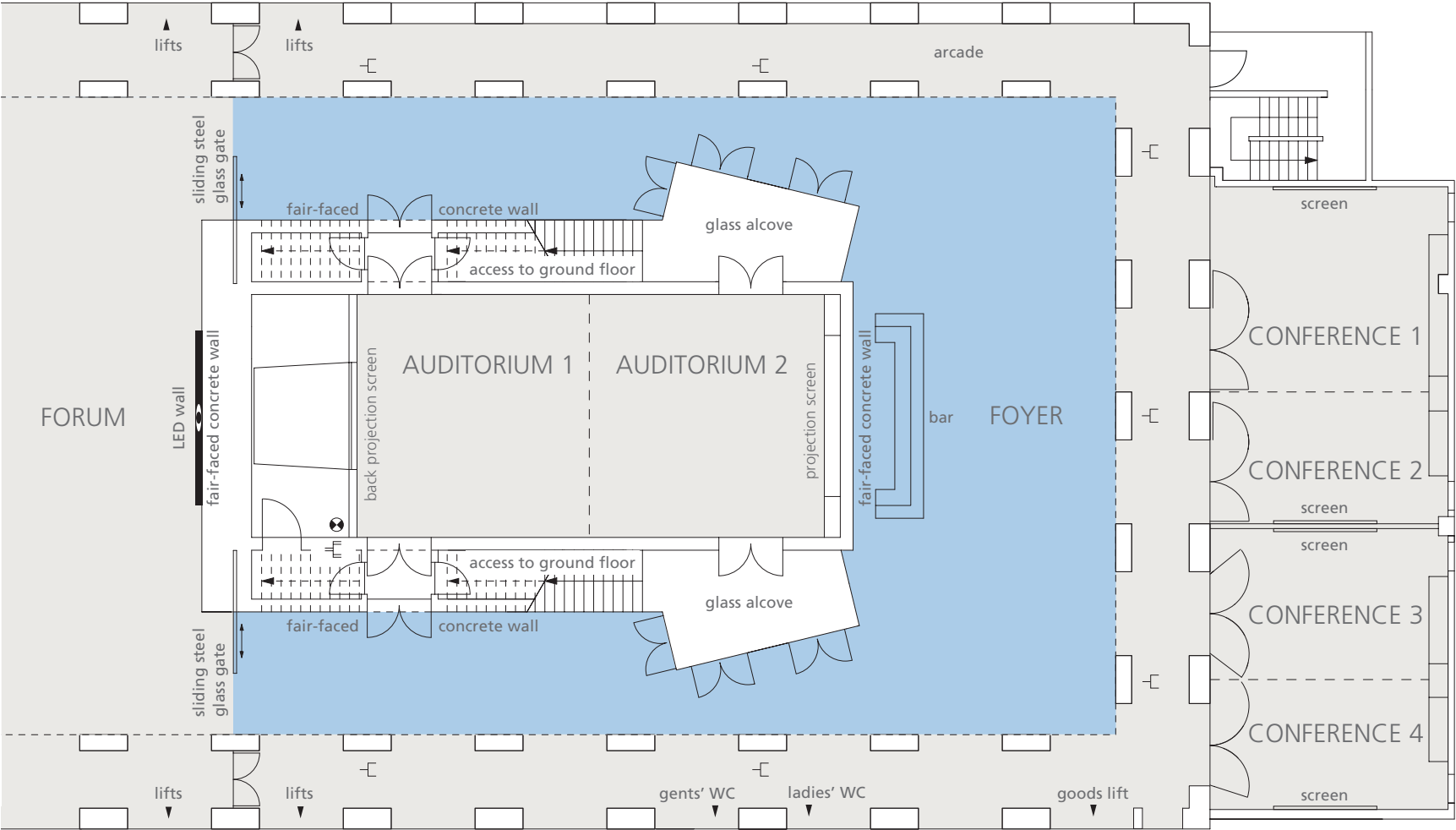
- » direct daylight
- » fitted bar with feature lighting
- » red carpet
- » arcade
- » access to all spaces
- » access to Wi-Fi





THE FOYER LOWER GROUND FLOOR

M 1:200



- power point
- 3-phase power point
- access ways TV and audio broad-casting system

DIMENSIONS	
total area	200 m²

SEATING CAPACITY	
reception/buffet	250 delegates
exhibition	depends on exhibition size

THE AUDITORIUM

LOWER GROUND FLOOR



EVENT TYPE

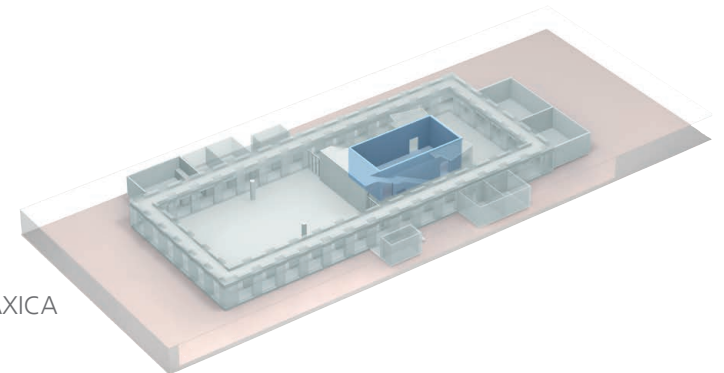
- » workshops
- » meetings
- » exhibitions & product presentations
- » additional service area
- » press conferences
- » lectures

INTERIOR & FURNISHING

- » flexible room concept; can be divided into two separate areas
- » indirect lighting
- » under-floor air-conditioning
- » red carpet

TECHNOLOGY & EQUIPMENT

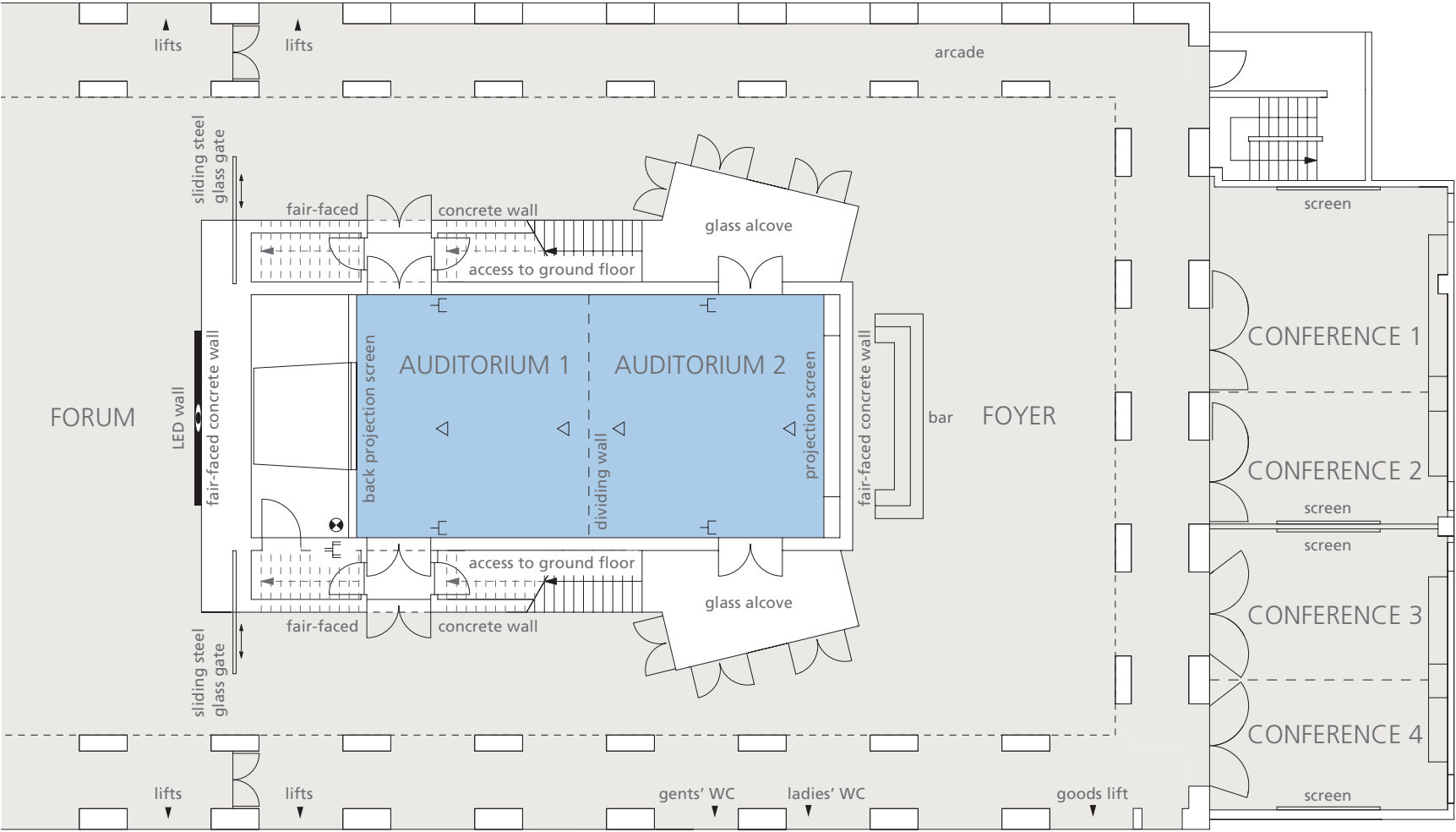
- » 150" back projection screen (3.81 m diagonal, format 4:3)
- » additional integrated projection screen at the front
- » TV frequency links
- » access to Wi-Fi
- » technical management provided by AXICA
- » technical cooperation with event production experts









THE AUDITORIUM LOWER GROUND FLOOR

M 1:200



- power point
- 3-phase power point
- power, tel./data lines
- access ways TV and audio broadcasting system

DIMENSIONS	Auditorium 1 & 2	Auditorium 1	Auditorium 2
total area	107,38 m²	53,36 m²	53,28 m²
length	14,55 m	7,22 m	7,20 m
width	7,38 m	7,38 m	7,38 m
height	4,55 m	4,55 m	4,55 m

SEATING CAPACITY	Auditorium 1 & 2	Auditorium 1	Auditorium 2
classroom 	60 delegates	20 delegates	20 delegates
boardroom 	30 delegates	16 delegates	16 delegates
theatre 	100 delegates	35 delegates	35 delegates
U-shape 	30 delegates	12 delegates	12 delegates

THE CONFERENCES

LOWER GROUND FLOOR



EVENT TYPE

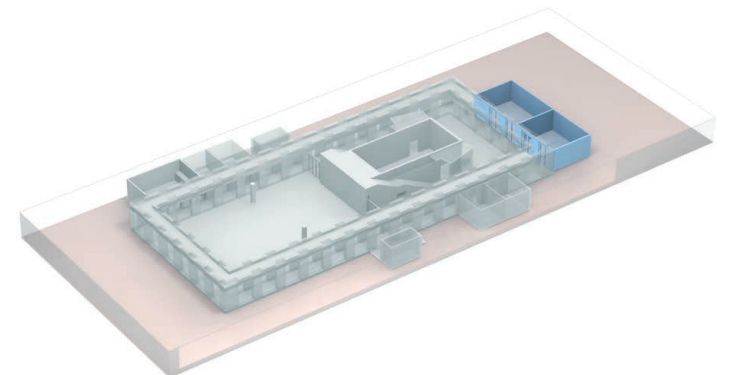
- » conferences
- » workshops
- » presentations
- » lounge
- » exhibitions
- » additional service area

INTERIOR & FURNISHING

- » indirect daylight
- » flexible room concept;
partition walls
- » red carpet

TECHNOLOGY & EQUIPMENT

- » fixed projection screens
- » access to Wi-Fi
- » floor cabled with power points
- » TV frequency links

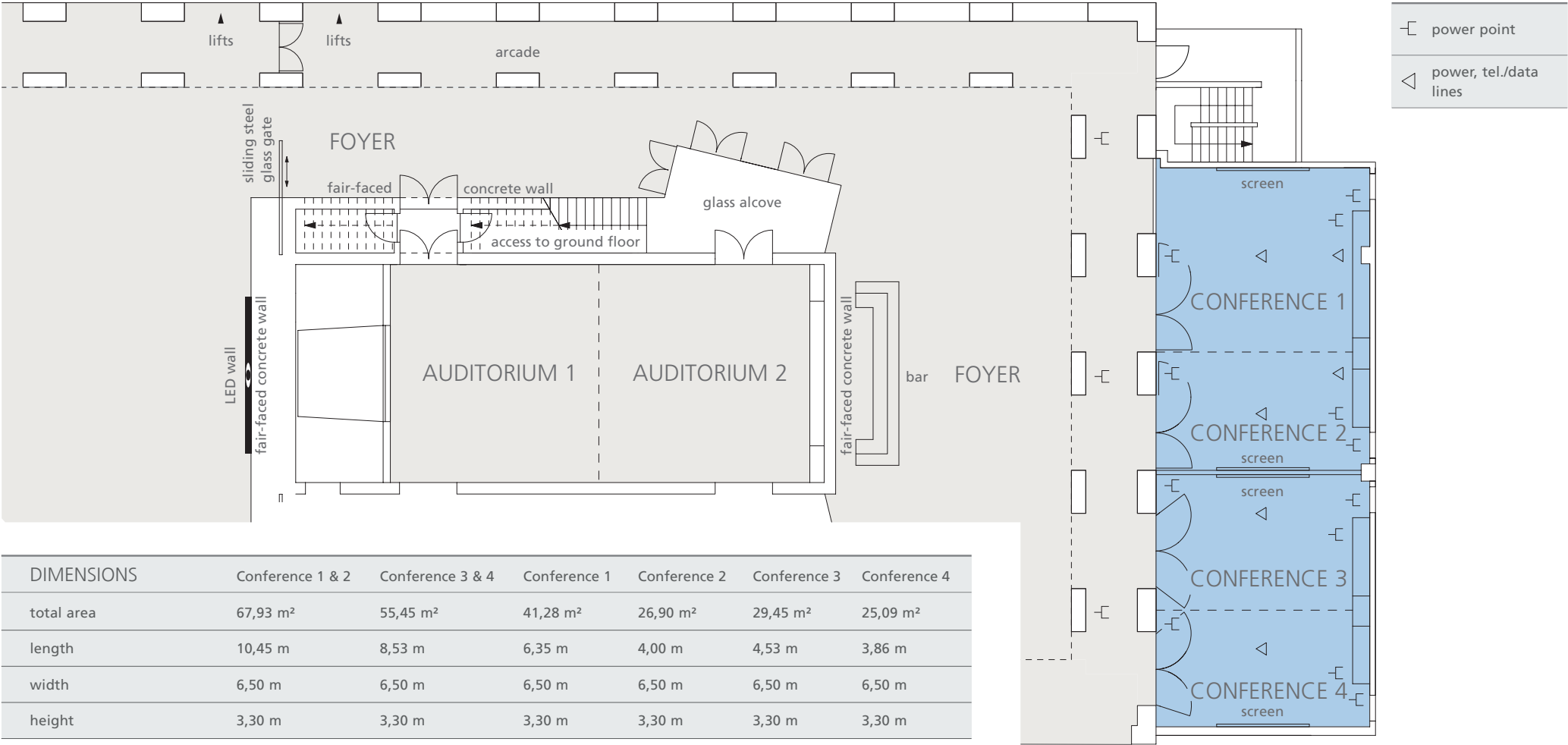







THE CONFERENCES

LOWER GROUND FLOOR

M 1:200



DIMENSIONS	Conference 1 & 2	Conference 3 & 4	Conference 1	Conference 2	Conference 3	Conference 4
total area	67,93 m²	55,45 m²	41,28 m²	26,90 m²	29,45 m²	25,09 m²
length	10,45 m	8,53 m	6,35 m	4,00 m	4,53 m	3,86 m
width	6,50 m	6,50 m	6,50 m	6,50 m	6,50 m	6,50 m
height	3,30 m	3,30 m	3,30 m	3,30 m	3,30 m	3,30 m

SEATING CAPACITY	Conference 1 & 2	Conference 3 & 4	Conference 1	Conference 2	Conference 3	Conference 4
classroom 	30 delegates	24 delegates	–	–	–	–
boardroom 	25 delegates	20 delegates	12 delegates	10 delegates	10 delegates	10 delegates
theatre 	55 delegates	40 delegates	–	–	–	–

THE GEHRY LOUNGE

LOWER GROUND FLOOR

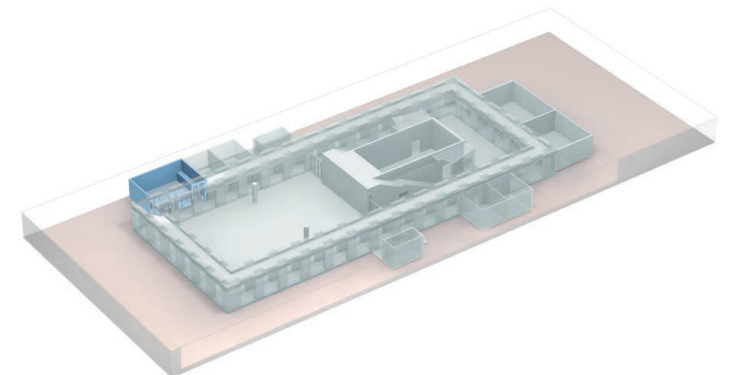


EVENT TYPE

- » cocktail bar & lounge
- » receptions
- » coffee breaks
- » VIP lounge

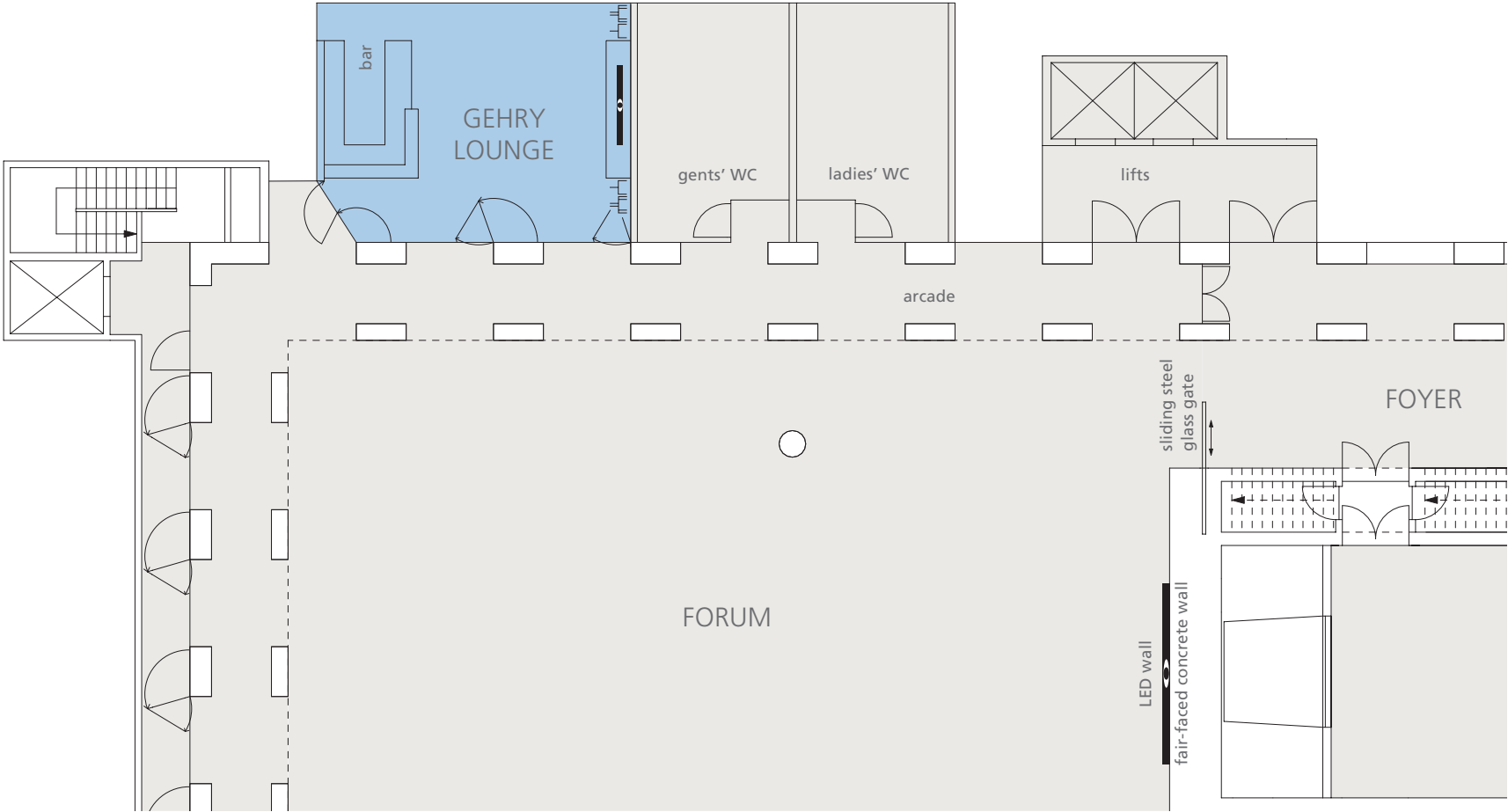
INTERIOR & FURNISHING

- » wooden seating designed by Frank O. Gehry
- » fitted coffee and cocktail bar
- » parquet floor
- » LED screen 58"
- » access to Wi-Fi





THE GEHRY LOUNGE LOWER GROUND FLOOR



- power point
- 3-phase power point
- LED screen 58"

DIMENSIONS	
total area	70 m²
length	9,20 m
width	7,10 m
height	4,50 m

SEATING CAPACITY		
café seating		35 delegates
reception		35 delegates

THE SKY LOBBY

WITH SKY LOUNGE WEST & EAST

TOP FLOOR



EVENT TYPE

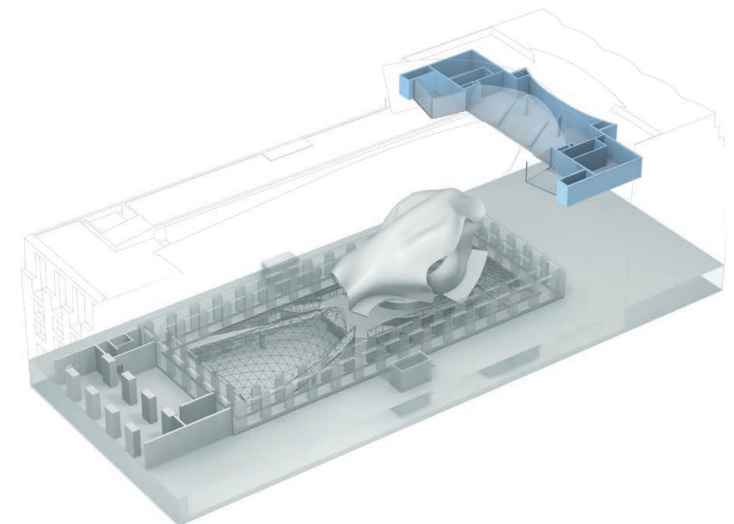
- » receptions
- » dinner
- » workshops
- » exhibitions
- » presentations
- » conferences
- » film set

INTERIOR & FURNISHING

- » open, expansive atmosphere on the 6th floor
- » direct daylight, glass front
- » view of the building's Atrium and the rooftops of Berlin
- » at eye-level with the Quadriga on the Brandenburg Gate and the dome of the Reichstag building
- » fully air-conditioned and ventilated
- » separate cloakroom and toilets

TECHNOLOGY & EQUIPMENT

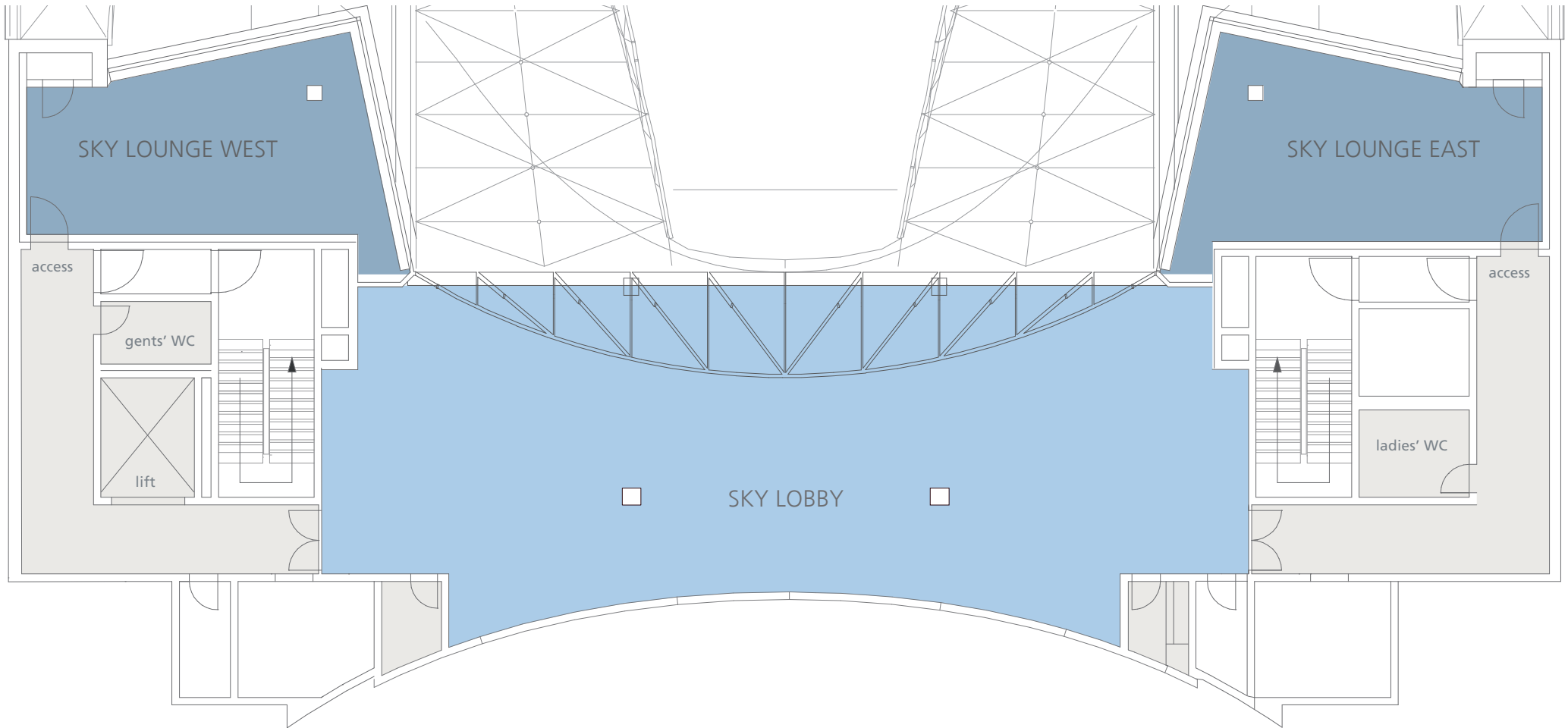
- » coloured interior lighting
- » powered adjustable spotlights
- » WiFi access available
- » power connections 220 + 380 V
- » technical management provided by AXICA
- » technical cooperation with event production experts





THE SKY LOBBY WITH SKY LOUNGE WEST & EAST | TOP FLOOR

M 1:120



DIMENSIONS SKY LOBBY	
total area	204 m²
length	24,80 m
width	8,14 - 9,65 m
height	4,35 - 5,59 m

SEATING CAPACITY SKY LOBBY		
classroom		40 delegates
theatre		80 delegates
dinner/buffet		50 delegates
reception		80 delegates

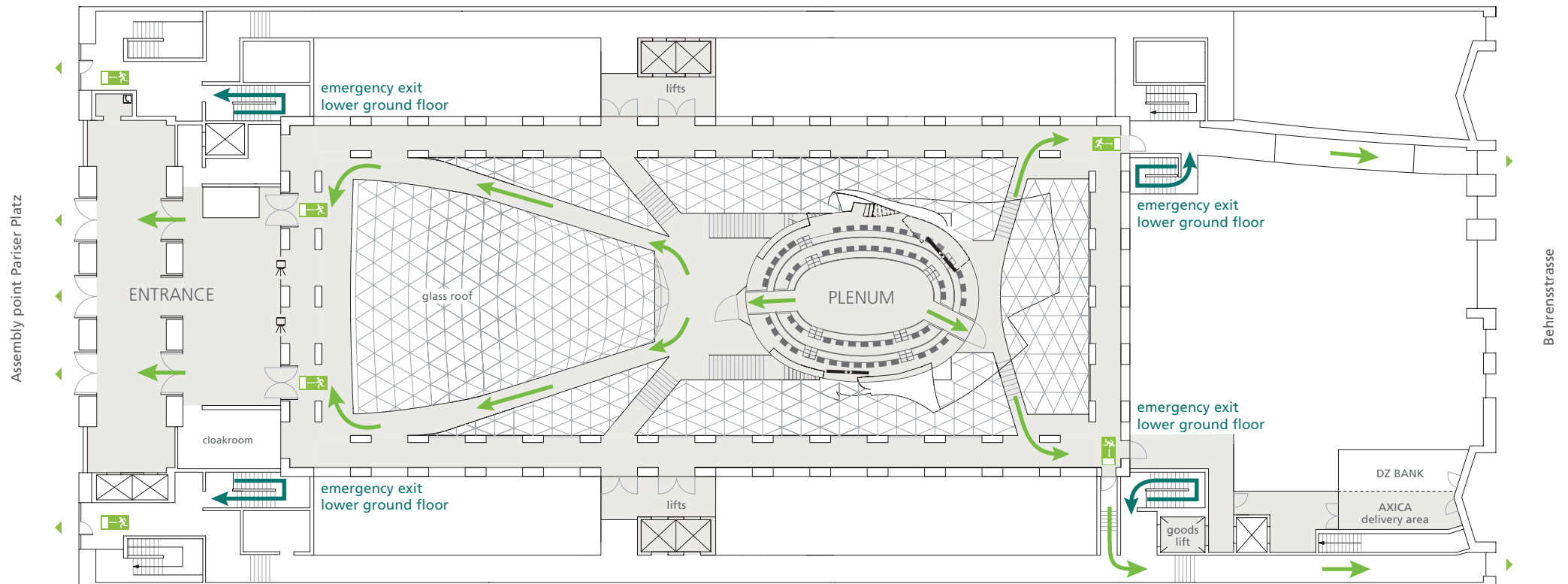
DIMENSIONS SKY LOUNGE	
total area	46 m²
length	9,00 - 10,00 m
width	4,00 - 5,80 m
height	3,00 m

CAPACITY SKY LOUNGE		
boardroom		18 delegates
theatre		25 delegates
dinner		12 delegates
reception		20 delegates



EVACUATION PLAN

GROUND FLOOR



IN CASE OF EMERGENCY

- » Please remain calm.
- » Please evacuate the building via the designated emergency exits.
- » Pay attention to announcements.
- » Do not use lifts.
- » Proceed to the assembly point at Pariser Platz.
- » Await further instructions.



EVACUATION PLAN

LOWER GROUND FLOOR

