

DEUTSCHES HISTORISCHES MUSEUM

BERLIN



Bild: Deutsches Historisches Museum

KOFLER & KOMPANIE
CULTURE IN FOOD SINCE 1823



THE LOCATION

LOCATIONS BECOME EXPERIENCES

The "Deutsches Historisches Museum" is located in one of the most representative areas of Berlin, close to the legendary „Museumsinsel" (Museum Island) and to the new government district directly beside the river Spree.

On May 28, 1695 the Elector Friedrich III of Brandenburg (who after 1701 called himself King Friedrich I in Prussia), gave the orders to lay the foundation stone of the Berlin "Zeughaus". He was followed by the constructor Martin Grünberg and then from 1698 to 1699 by Andreas Schlüter. By the 18th century the Zeughaus was the largest weapon depot in Brandenburg-Prussia. After World War I, the Zeughaus was incorporated into the "Prussian Art Collections" as the "State Arsenal". In 1944/45 the building was severely damaged by bombs and grenades. The reconstruction of the building went from 1948 to 1965. From 1952 to 1990 the "Museum for German History", founded by the Central Committee of the SED (Socialist Unity Party), was located in the Zeughaus. In 1987 the Federal Republic of Germany and the State of Berlin founded the Historical Museum.

Kofler & Kompanie provides exclusively about 2,000 square meter event space and the public café & restaurant „Café im Zeughaus".

TO PUT IT IN A NUTSHELL

KEY DATA

Adress:	Deutsches Historisches Museum Unter den Linden 2 10117 Berlin Germany
Catering:	Kofler & Kompanie GmbH
Capacities:	bis zu 650 people
Temporary use:	from 6 pm on the day of the event construction the day before from 6 pm and at the day of the event from 6 pm
	Public visiting time from 10 am to 6 pm
Parking areas:	we recommend arrival by Bus-Shuttles
Rental prices:	on request

THE AREAS

THE OLD BERLIN IN A NEW LIGHT



picture: Hardenberg Concept GmbH

The "Deutsche Historische Museum" consists of three different event areas:
"the Foyer unter den Linden", the "Schlüterhof" and the "I.M. Pei Bau".

FOYER

LOCATION



photos: Andreas Bohlender

The Foyer of the “Deutsches Historisches Museum”, which is located on the historical avenue Unter den Linden represents the most appropriate area for reception events in the “Schlüterhof”.

It was restored with its originally polished granite sheeting and the impressive pillars. Numerous windows create a flow of light throughout the foyer. In the evenings it can be lit by an innovative lighting concept.

Due to its unique character it is most representative for your guests to be welcomed with a glass of champagne or another nice aperitif.

FOYER

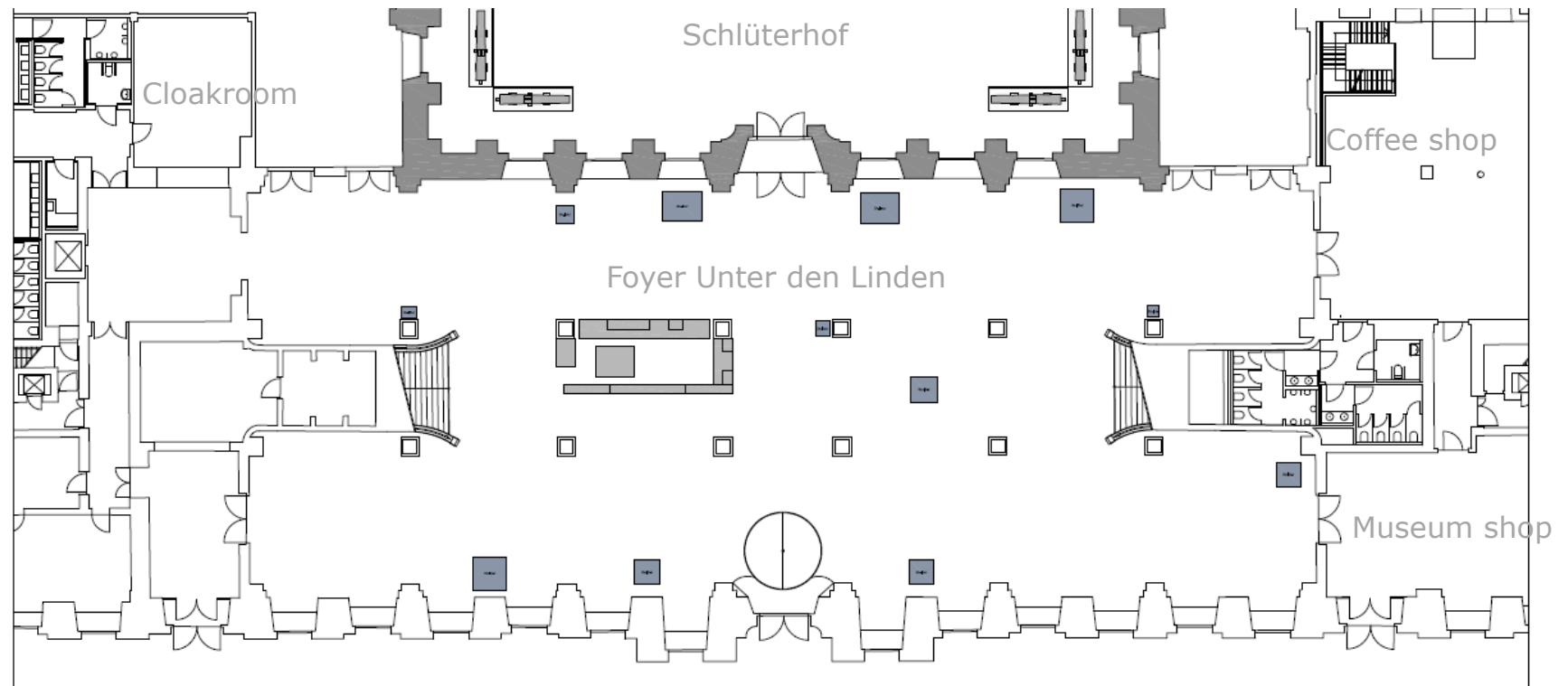
KEY FACTS

Area	1190,00 sqm
Width	21,20 m
Length between stairs	36,00 m
Total length	57,70 m
Hight	6,50 m
Door Unter den Linden / foyer	2,62 m wide
Revolving door Unter den Linden / foyer	2,60 m wide
Door foyer / Schlüterhof	2,32 m wide
Fire load	A1



FOYER UNTER DEN LINDEN

FLOOR PLAN - OVERVIEW





SCHLÜTERHOF

The Schlüterhof owes its name to the architect Andreas Schlüter, who had a great influence on the structure of the building. It is the oldest and biggest antique courtyard in Berlin.

The beautiful glass ceiling designed by I.M. Pei scatters light in to the hall. It spans a spacious and glamorous atrium, 1300 square metres wide. At night, the glass roof reflects the lighting from inside and turns the atrium into a festive hall. A specially designed heating and air conditioning system guarantees a comfortable climate throughout the year.

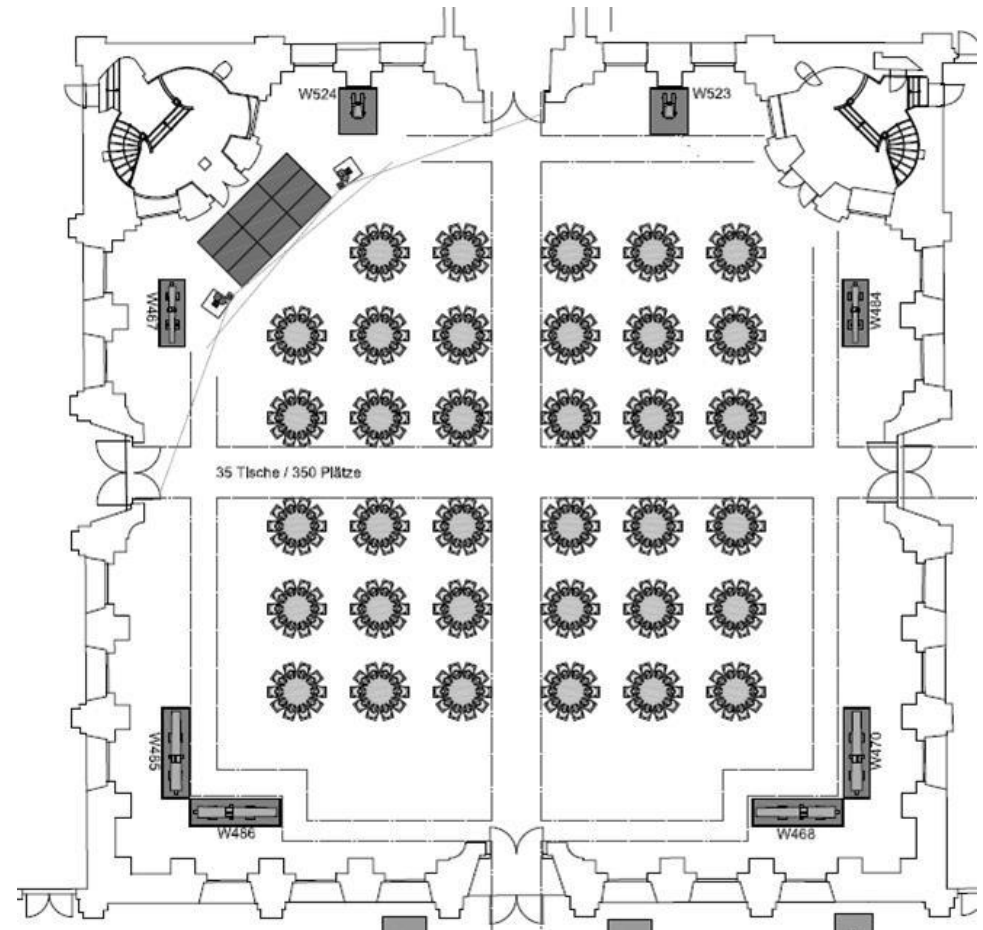
The Schlüterhof can be used for all kinds of events such as gala dinners, presentations and receptions. There are no pillars or any fixed obstacles distracting the view for presentations or disturbing the generosity of the great hall.

SCHLÜTERHOF

KEY FACTS

Area	1.310,00 sqm
Width in it`s center	36,75 m
Length in it`s center	36,75 m
Height first cornice	6,50 m
Height second cornice	16,00 m
Maximum floor pressure	500 kp/sqm
Door Schlüterhof / foyer	2,32 m breit
Door Schlüterhof / Pei-Bau	2,54 m breit
Fire load	B1
Stage	8x6 m marked extent adjustable From 2 x 1 m to 12 x 8 m

*picture:
seating plan for 350 persons,
round tables*



SCHLÜTERHOF

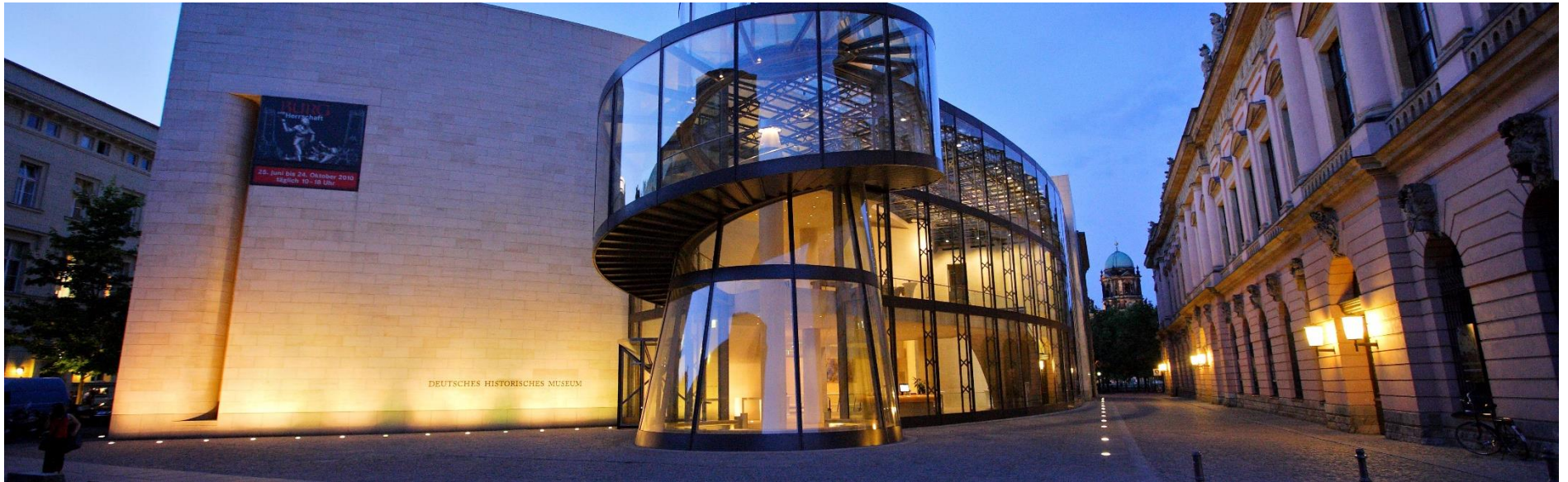
IMPRESSIONS



Photos: Andreas Bohlender

I.M. PEI BAU

LOCATION



Adjoining to the Schlüterhof you will find the newly built I.M. Pei Building. Pei, who is also the architect of the pyramid of the Louvre in Paris, has created a fantastic composure. The venture to fuse „old“ and „new“ really has succeeded.

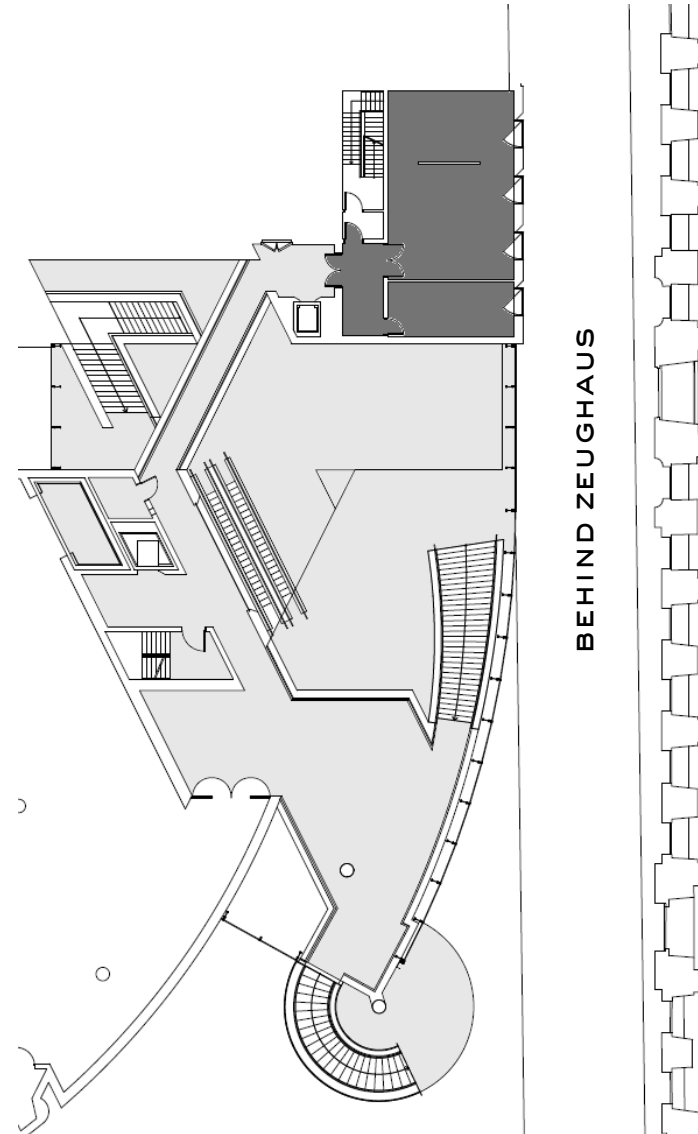
There are four different levels with foyers of different shapes and sizes. A flight of winding stairs connects the floors and represents one of the greatest attractions. The building appears almost transparent, all elements seem to be very light and from each level you are able to see parts of the others.

The foyer of the Pei Building can be used as a reception area for events at the Schlüterhof or for individual exhibitions and product presentations.

I.M. PEI BAU

KEY FACTS & FLOORPLAN

Area foyer	900,00 sqm
Hight	4,00-12,00 sqm
Maximum floor pressure	5,00 kN
Door 01 entrance Pei-Bau	2,15 m wide
Door 02 entrance Pei-Bau	
[revolving door]	2,00 m wide
Door Pei-Bau / Schlüterhof	2,54 m wide
Fire load	B1



I.M. PEI BAU

IMPRESSIONS



CAFÉ IM ZEUGHAUS

AT DEUTSCHES HISTORISCHES MUSEUM BERLIN
GERMAN HISTORICAL MUSEUM

Café am Zeughaus is located in one of the most representative place of Berlin, near the *Museumsinsel*, the government district and directly on the river *Spree*. A historic place with a fantastic view of the Cathedral *Berliner Dom* and centrally located on the street "Unter den Linden".

Celebrate exclusively – The venue (including the outdoor terrace) can be booked exclusively for your events. Depending on your concept, the café offers enough space for 100-150 guests. Your guests can be pampered in a meaningful and elegant atmosphere with impressive views over the landmarks of Berlin and with culinary highlights of Kofler & Kompanie.

History – Laying of the cornerstone for the impressive Baroque building was on May 28, 1695 by Elector Friedrich III. of Brandenburg, 1701 King Frederick I of Prussia. It was followed by the builders Martin Grünberg and 1698-1699 Andreas Schlüter.



Photo: Andreas Bohlender



Photo: Gregor Anthez

CAFÉ IM ZEUGHAUS

KEY FACTS

Your exclusive event at „Café im Zeughaus“:

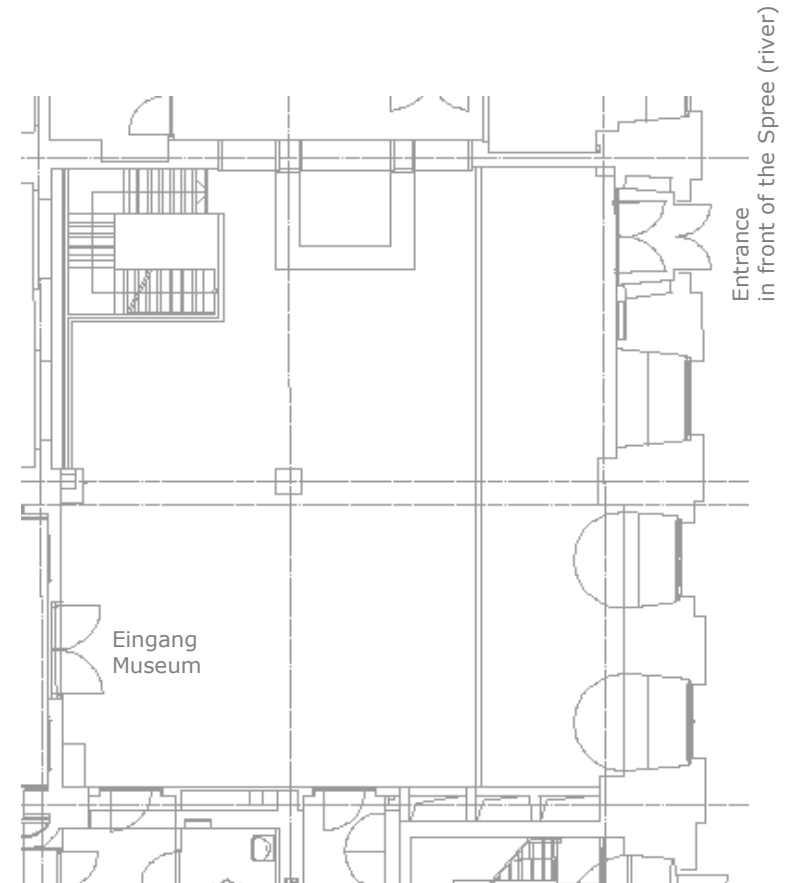
Adress: Café im Zeughaus
Unter den Linden 2, 10117 Berlin, Germany

Catering: Kofler & Kompanie GmbH

Capacities: Receptions at Café up to 150 guests
Gala-Dinner up to 70 guests
Galerie im Café up to 45 guests

Event space: Café im Zeughaus about 150 m²
balcony at the Café
outside: terrace in front of the Café

Rental price: on request



Street: Unter den Linden

CAFÉ IM ZEUGHAUS

IMPRESSIONS – DINNER



Fotos: Andreas Bohlender

LOOKING FORWARD TO WELCOME YOU!

CONTACT

Kofler & Kompanie GmbH

Headoffice Potsdamer Platz

Linkstr. 12

D-10785 Berlin

Phone +49 30 259 289 0

Fax +49 30 259 289 11

Please send your inquiry to:

berlin@koflerkompanie.com

Guido Nitze

Unit Manager Berlin

Phone +49 30 259 289 40

Email gn@koflerkompanie.com



SATISFYING
ALL SENSES

KOFLER & KOMPANIE
CULTURE IN FOOD SINCE 1823