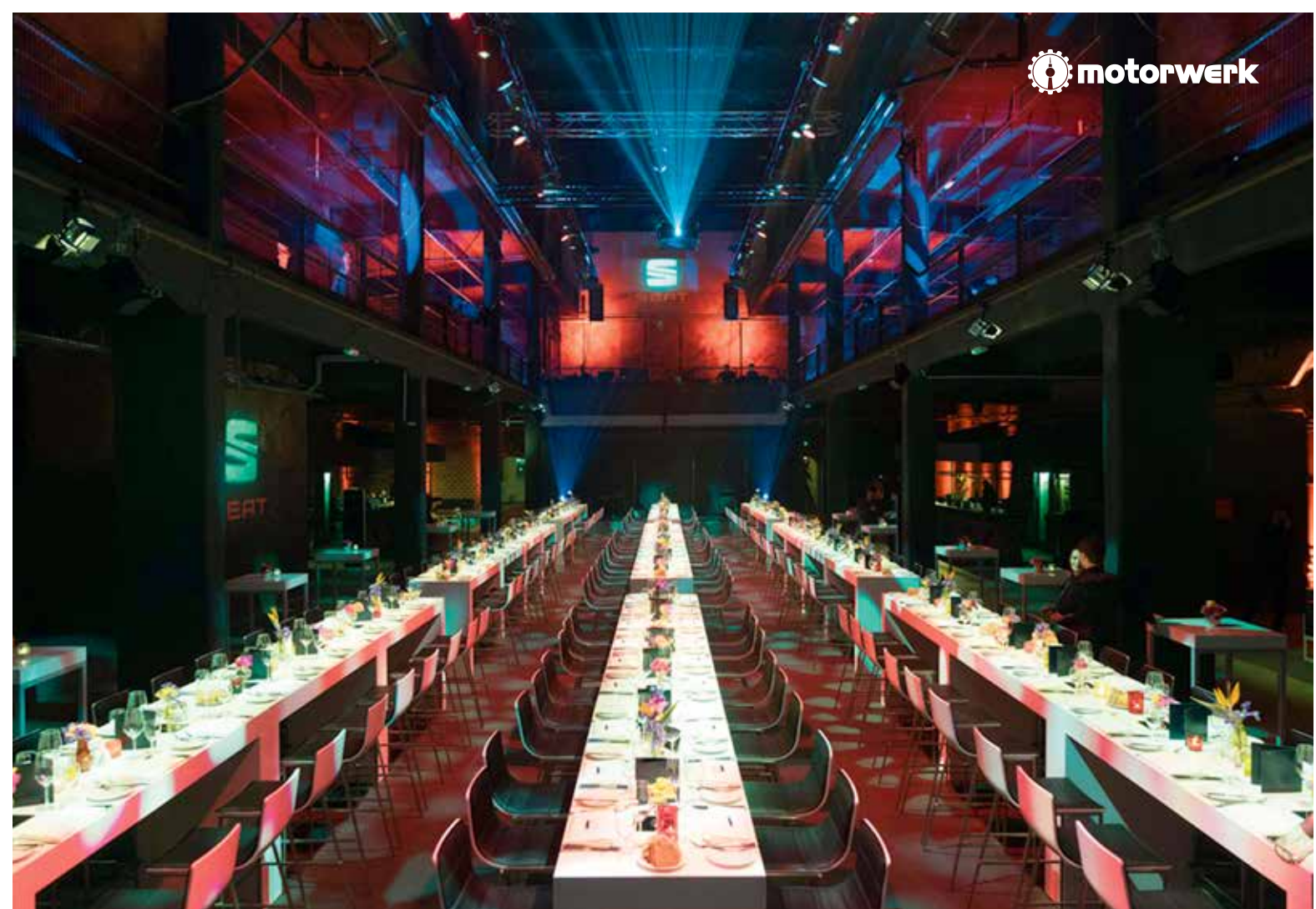




**EVENTLOCATION IN BERLIN**

**[www.motorwerk.de](http://www.motorwerk.de)**







The Motorwerk is characterized by an original industrial architecture and the rough, warm character of a production hall from the early 20th Century. With its impressive dimensions, it is one of the few off-locations in Berlin, which has preserved its appearance until today.

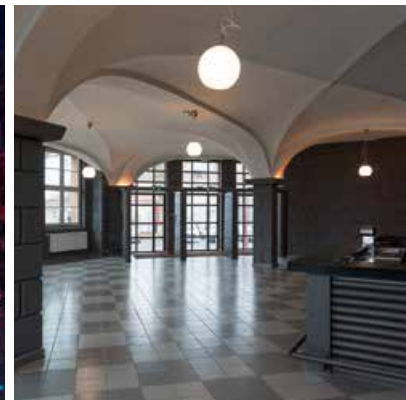
The core of the Motorwerk is the huge hall with remarkable proportions of its ground floor. It covers a length of 90 meters, an area of about 2,000 square meters and offers ideal conditions for concerts, fashion shows, get-togethers, dinners, product launches, fairs and exhibitions.



Particularly impressive is the gallery with about 1,000 square meters.

The front building has two floors with over 400 square meters of space.

A large outdoor area next to the building can also be used. Other areas on the site are available on request.



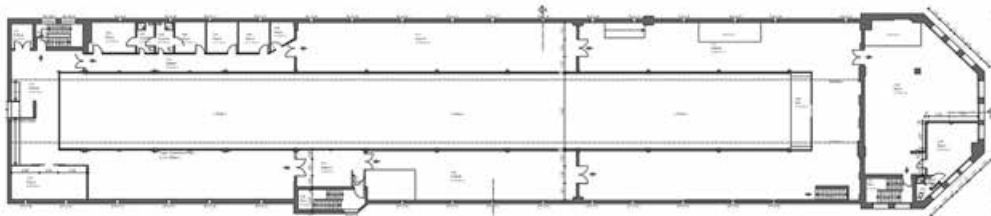
# PLAN MOTORWERK



Main Floor



Upper Floor with Gallery



# HISTORY

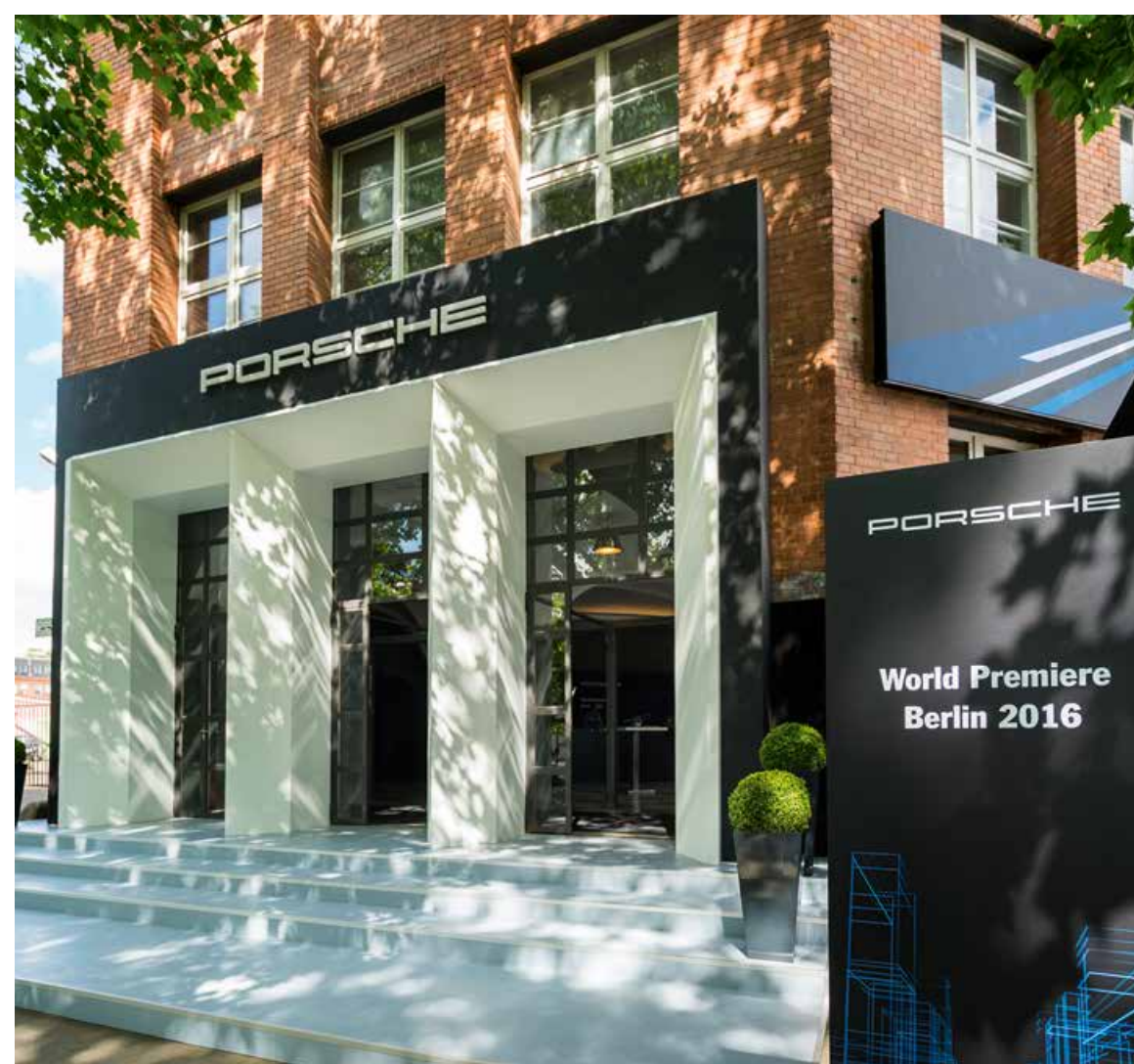


The event location “Motorwerk Berlin” is situated at Industriebahn Berlin. It is a former industrial facility built in the early 1920s in brick stone. The landmarked building has been constructed as industrial premises for Ziehl-Abegg Elektrizitätsgesellschaft, which has been founded in 1910 by Emil Ziehl and Eduard Abegg.

In times of technological progress, Emil Ziehl developed ground-breaking special purpose electric engines. They have been manufactured in those premises since 1921 until WWII.

From this former engine production the name „Motorwerk Berlin“ (engine factory Berlin) is derived.















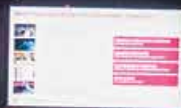




T-Systems

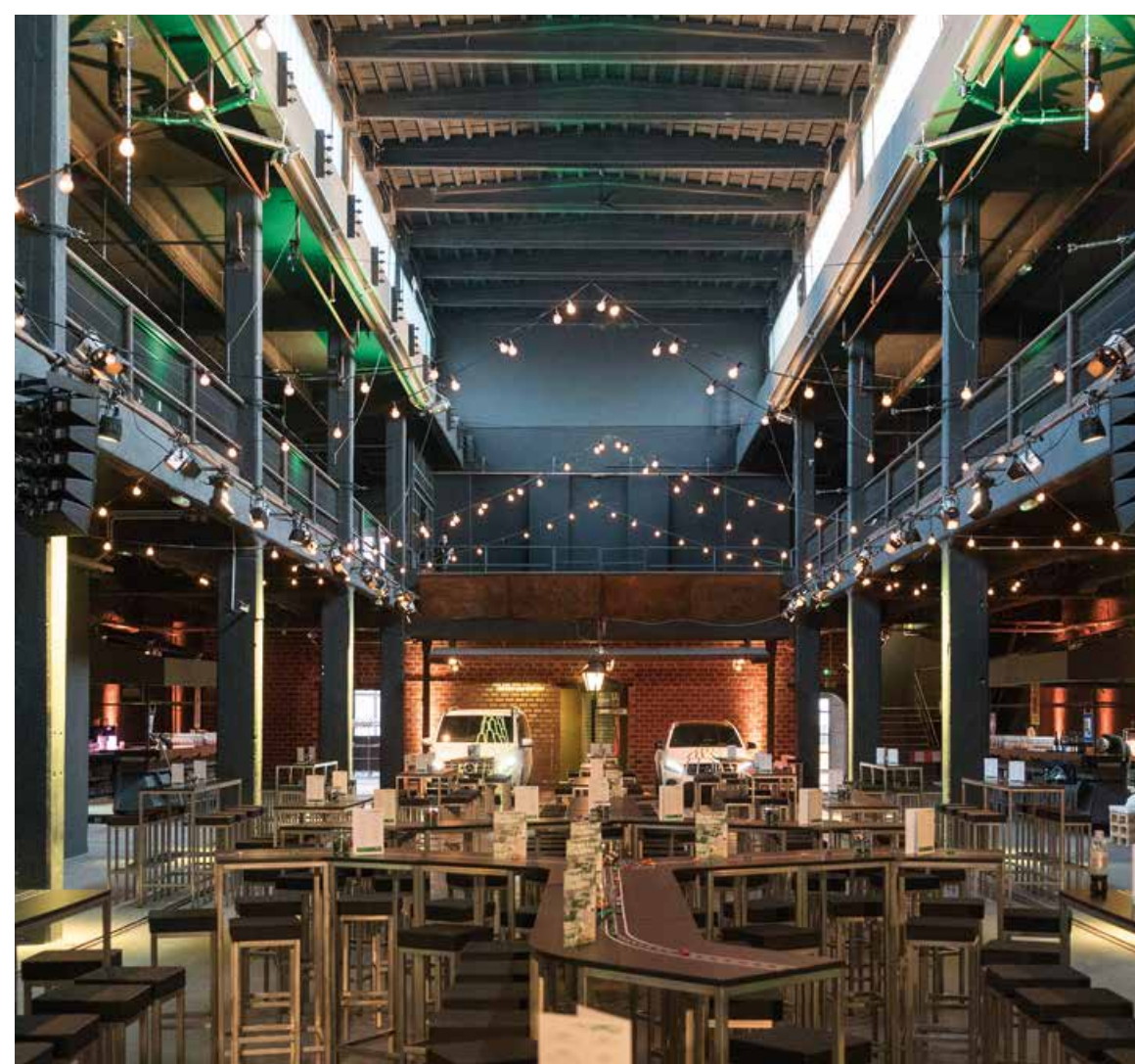


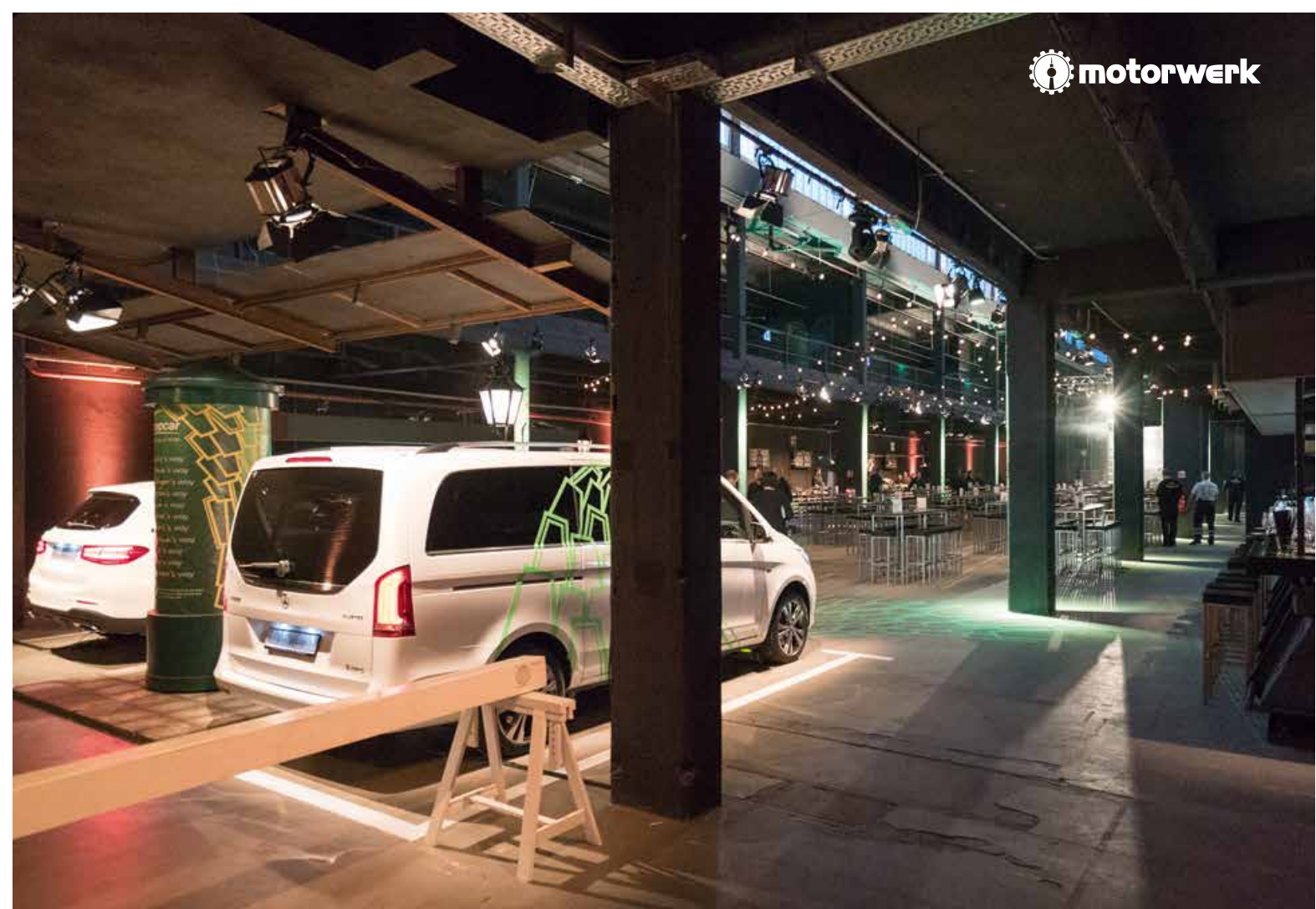
**BREAKOUT  
SESSION**

















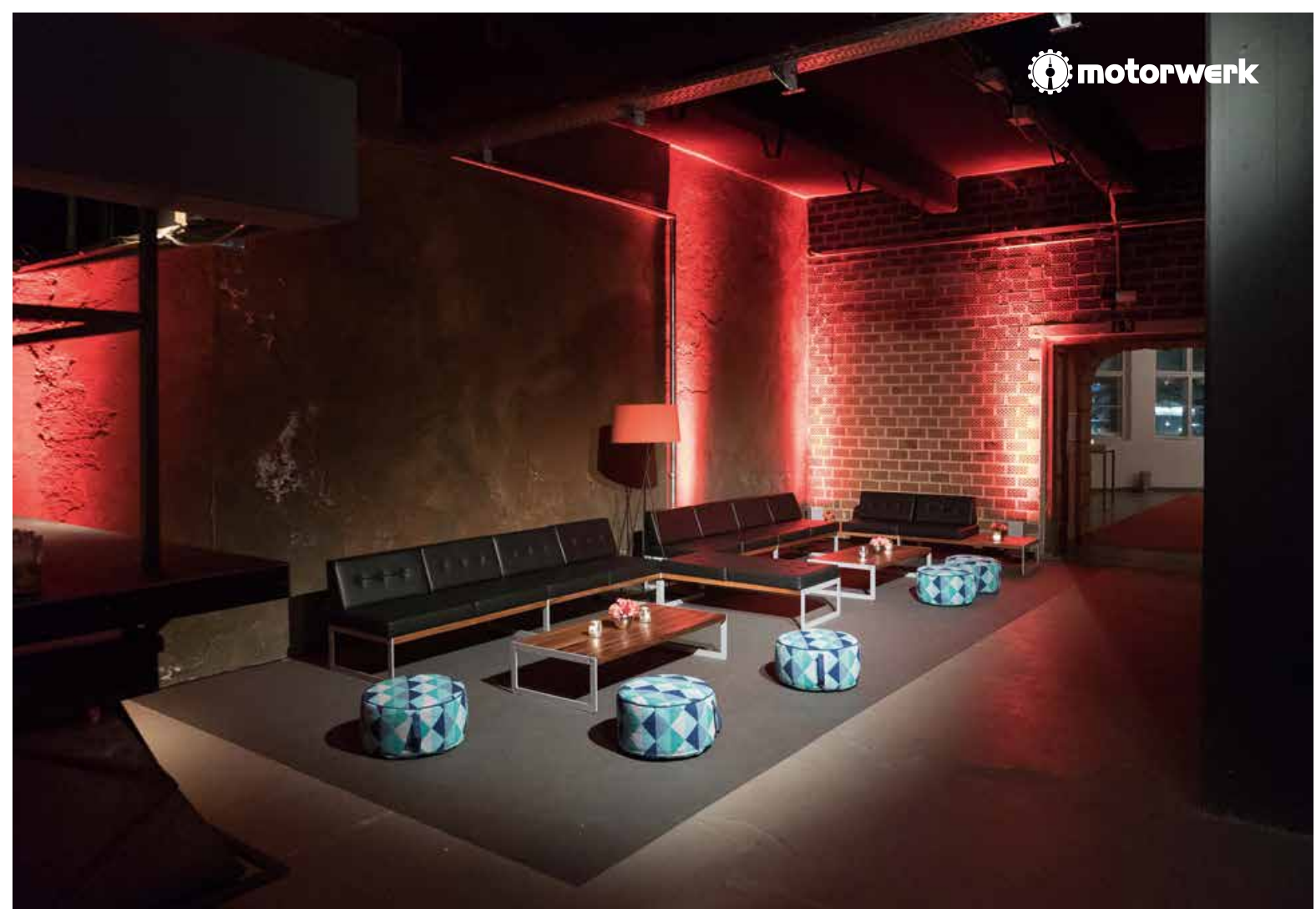


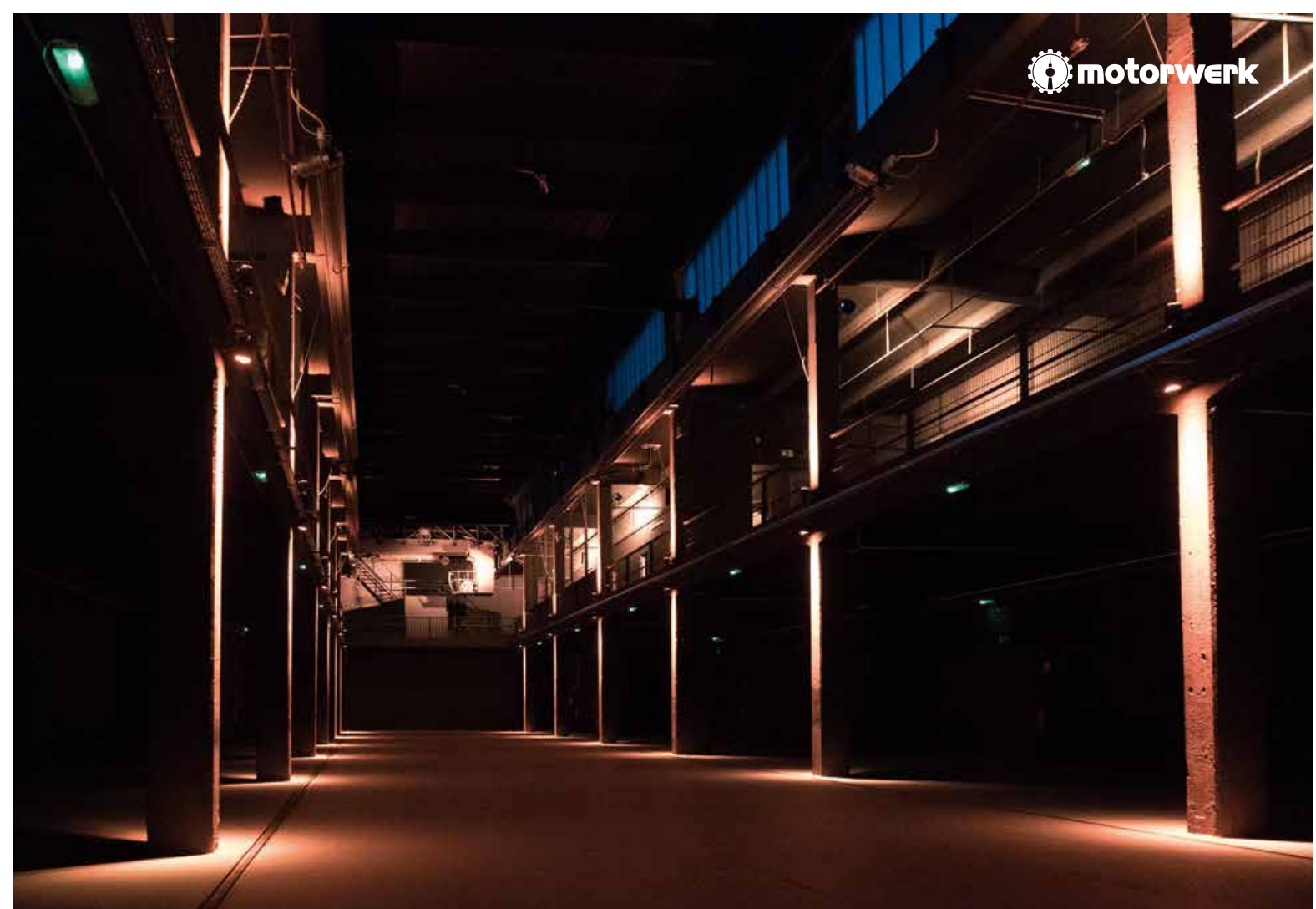












# HOW TO FIND US

An der Industriebahn 12-16  
13088 Berlin



The Motorwerk is located in the north of Berlin, only 10 minutes from the trendy Prenzlauer Berg and accessible from the central parts of the city by car in a few minutes.

15 minutes from Alexanderplatz

25 minutes from Central Station („Hauptbahnhof“)

35 minutes from Messe Berlin

## Public Transport

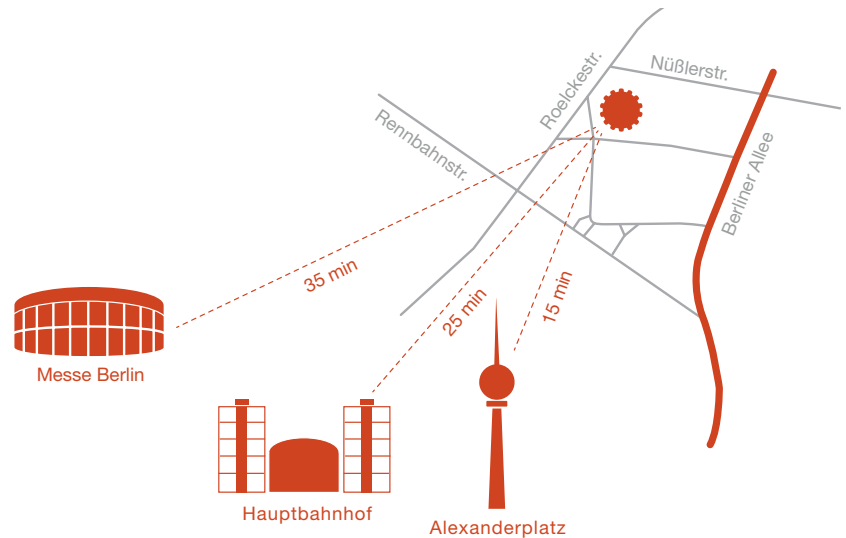
From S-Bahnhof Pankow:

Bus 155 / X54 to Pasedagplatz (5 min walking distance)

Bus 255 to Roelckestr./Nüßlerstr. (3 min walking dist.)

From S-Bahnhof Friedrichstraße:

Tram 12 to Pasedagplatz (5 min walking distance)



# CUSTOMERS



**Location Address:**

An der Industriebahn 12, 13088 Berlin

**Company:**

AMATA Management GmbH

An der Industriebahn 12, 13088 Berlin

**E-Mail:** [info@motorwerk.de](mailto:info@motorwerk.de)

**Telephone:** +49 (30) 60 98 74 76 - 2

**Fax:** +49 (30) 60 98 74 76 - 9



[www.motorwerk.de](http://www.motorwerk.de)



[www.facebook.com/motorwerk](https://www.facebook.com/motorwerk)

