

## HOFLIEFERANTEN BERLIN

[Link to meeting guide Berlin](#)

With a great deal of experience and an eye for the extraordinary, we plan events for 50 to 5,000 people and compile a bespoke selection of Hoflieferanten Berlin classics and seasonal dishes. Our delicious buffets and menus go down with meat and fish eaters just as well as they serve the needs of vegetarians. Today, our company group includes Hoflieferanten Berlin, the restaurant in the Hamburger Bahnhof in Berlin, a company-owned wood-fired-oven bakery in the south of Berlin and the Gut Kerkow organic farm in the Uckermark region. Our high standards of culinary quality and sustainability ensure healthy ecological cycles and the lowest-possible environmental impact.

## CONTACT



**Hoflieferanten Berlin**

D-10115 Berlin - Mitte -

[lammert@hoflieferanten.berlin](mailto:lammert@hoflieferanten.berlin)

[+49 \(0\)30 394 05 52-214](tel:+49303940552214)

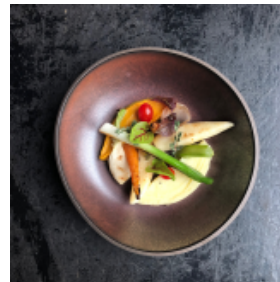
## GALLERY



Sarah Wiener Berlin  
© GmbH



Sarah Wiener Berlin  
© GmbH



Sarah Wiener Berlin  
© GmbH



Sarah Wiener Berlin  
© GmbH