

# HENRI HOTEL BERLIN KURFÜRSTENDAMM



[Link to meeting guide Berlin](#)

Meet, work and relax like in great-grandfather's time. Up to 12 people can let their creativity run free on 30 m<sup>2</sup> in a unique, historical ambience. Everything you need for a successful meeting, is available in the so called "Herrenzimmer": screen, beamer, flipchart, whiteboard, free WiFi, pin board and moderator's case. In addition, the seminar room is equipped with natural light and a minibar for self-service. The salons and the "Damenzimmer" can be used for a coffee break or as a breakout room. The trade fair, main railway station or airports are easily accessible from the HENRI Hotel Berlin Kurfürstendamm thanks to the good connection to public transport.

## EVENT SPACES

max. room dimension up to 30m<sup>2</sup> 1 Event space total

max. room height up to 3,30m

Room area

Room height

Welcome reception

Banquet

Classroom

Arrange seating in rows

## EQUIPMENT IN EVENT SPACES



Natural light



Projection technology



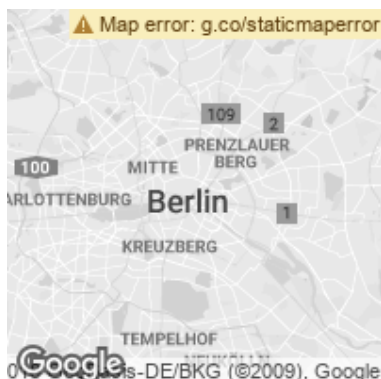
WiFi in event spaces

## DOWNLOADABLE MATERIAL ABOUT THE HOTEL



[Beschreibung des Herrenzimmers; Verpflegungsmöglichkeiten; Grundriss des Raumes](#)

## LOCATION & ACCESS



**3,8 KM**  
main station



**3,3 KM**  
fairground



**7,0 KM**  
airport Tegel (TXL)



**18,3 KM**  
airport Schönefeld (SXF)

## CONTACT



HENRI Hotel Berlin Kurfürstendamm

Meinekestraße 9

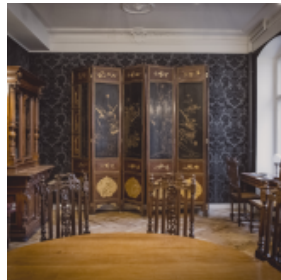
D-10719 Berlin - Charlottenburg

<http://www.henri-hotels.com/berlin>

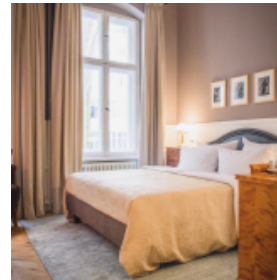
## GALLERY



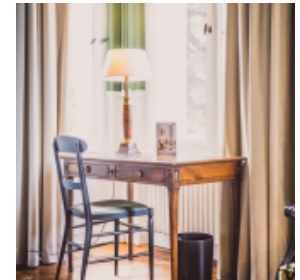
© StefanBogner



© StefanBogner



© StefanBogner



© StefanBogner



© StefanBogner



© StefanBogner



© StefanBogner



© StefanBogner