

## MUSEUM FÜR NATURKUNDE

[Link to meeting guide Berlin](#)

This evening will be unforgettable: the Museum für Naturkunde (Natural History Museum) offers the unique opportunity to hold an exclusive dinner or reception in the Exhibition halls. World famous fossil-celebrities, such as the highest mounted dinosaur skeleton *Brachiosaurus brancai* or the Berlin specimen of *Archaeopteryx lithographica* will be your hosts and overwhelm your guests in a unique atmosphere. Further theme halls attract with visual Highlights such as the "biodiversity wall" or the "wet collections". On Occasion, empty or Special Exhibition halls may be available.

### EVENT SPACES

max. room dimension up to 250.00m<sup>2</sup> - 2 Event spaces total - max. room height up to 15m - Exhibition space from 1 to 350m<sup>2</sup>

Room area - Room height - Welcome reception - Banquet - Classroom - Arrange seating in rows

#### Sauriersaal / Dinosaur Hall

770m <sup>2</sup>	15.00m	800	180	n.a.	180
-------------------	--------	-----	-----	------	-----

#### Evolution in Aktion

465m <sup>2</sup>	5.70m	50	20	n.a.	25
-------------------	-------	----	----	------	----

#### Sonderausstellung TRISTAN

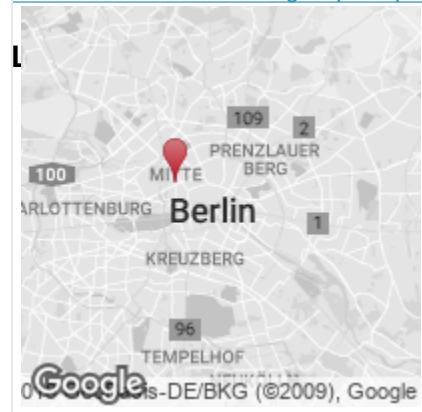
355m <sup>2</sup>	5.70m	100	50	n.a.	n.a.
-------------------	-------	-----	----	------	------

### EQUIPMENT IN EVENT SPACES

Accessible - Audio system - Natural light - Projection technology

### DOWNLOADABLE MATERIAL ABOUT THE LOCATION

[2018 - MfN - Veranstaltungsexposé.pdf](#) [2017\\_mfn\\_veranstaltungsexpose\\_en-op.pdf](#)



**930 M**  
main station

**7,3 KM**  
fairground

**6,8 KM**  
airport Tegel (TXL)

**18,8 KM**  
airport Schönefeld (SXF)

### CONTACT

[mfnb\\_logo\\_light\\_backgrounds.png](#)

Museum für Naturkunde

Invalidenstraße 43

D-10115 Berlin - Mitte

<http://www.museumfuernaturkunde.berlin>



©  
Museum  
für



© Museum für Naturkunde  
Berlin, Carola Radke



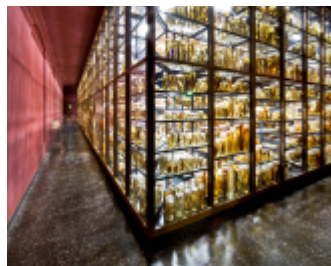
© Museum für Naturkunde  
Berlin, Carola Radke



© Museum für Naturkunde  
Berlin, Foto: Thomas Rosenthal



© visitBerlin, Foto:



© Museum für Naturkunde  
Berlin, Carola Radke