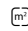


MUSEUM FÜR NATURKUNDE

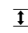
[Link to meeting guide Berlin](#)


This evening will be unforgettable: the Museum für Naturkunde (Natural History Museum) offers the unique opportunity to hold an exclusive dinner or reception in the Exhibition halls. World famous fossil-celebrities, such as the highest mounted dinosaur skeleton *Brachiosaurus brancai* or the Berlin specimen of *Archaeopteryx lithographica* will be your hosts and overwhelm your guests in an unique atmosphere. Further theme halls attract with visual Highlights such as the "biodiversity wall" or the "wet collections". On Occasion, empty or Special Exhibition halls may be available.

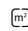
EVENT SPACES

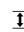
 max. room dimension up to 250.00m²


2 Event spaces total

 max. room height up to 15m

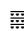
 Exhibition space from 1 to 350m²


 Room area

 Room height

 Welcome reception

 Banquet

 Classroom

 Arrange seating in rows

Sauriersaal / Dinosaur Hall

770m ² 	15.00m 	800 	180 	n.a. 	180 
--	---	--	--	---	--

Evolution in Aktion

465m ² 	5.70m 	50 	20 	n.a. 	25 
--	--	---	---	---	---

Sonderausstellung TRISTAN

355m ² 	5.70m 	100 	50 	n.a. 	n.a. 
--	--	--	---	---	---

EQUIPMENT IN EVENT SPACES



Accessible



Audio system



Natural light



Projection technology

DOWNLOADABLE MATERIAL ABOUT THE LOCATION

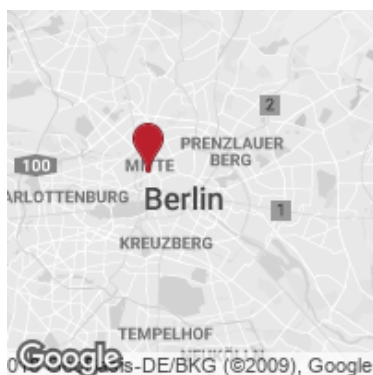


[Veranstaltungsexposé \(deutsch\)](#)



[Eventexposé \(english\)](#)

LOCATION & ACCESS



930 M
main station



7,3 KM
fairground



6,8 KM
airport Tegel (TXL)



18,8 KM
airport Schönefeld (SXF)

CONTACT



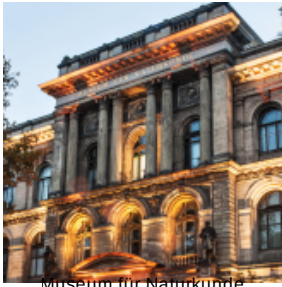
Museum für Naturkunde

Invalidenstraße 43

D-10115 Berlin - Mitte

<http://www.museumfuernaturkunde.berlin>

GALLERY



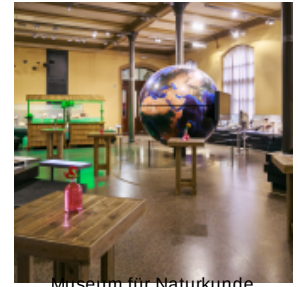
Museum für Naturkunde
Berlin, Foto: Carola
© Radke



Museum für Naturkunde
© Berlin, Carola Radke



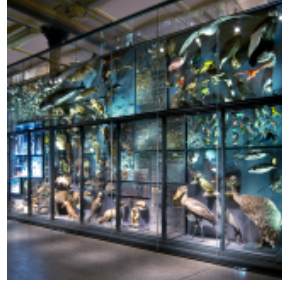
Museum für Naturkunde
© Berlin, Carola Radke



Museum für Naturkunde
Berlin, Foto: Thomas
© Rosenthal



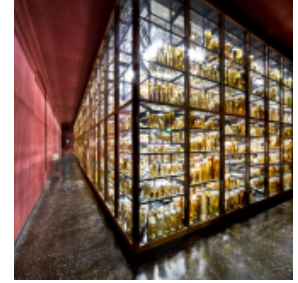
Museum für Naturkunde
Berlin, Foto: Thomas
© Rosenthal



© visitBerlin, Foto:



Museum für Naturkunde
Berlin, Foto: Carola
© Radke



Museum für Naturkunde
© Berlin, Carola Radke